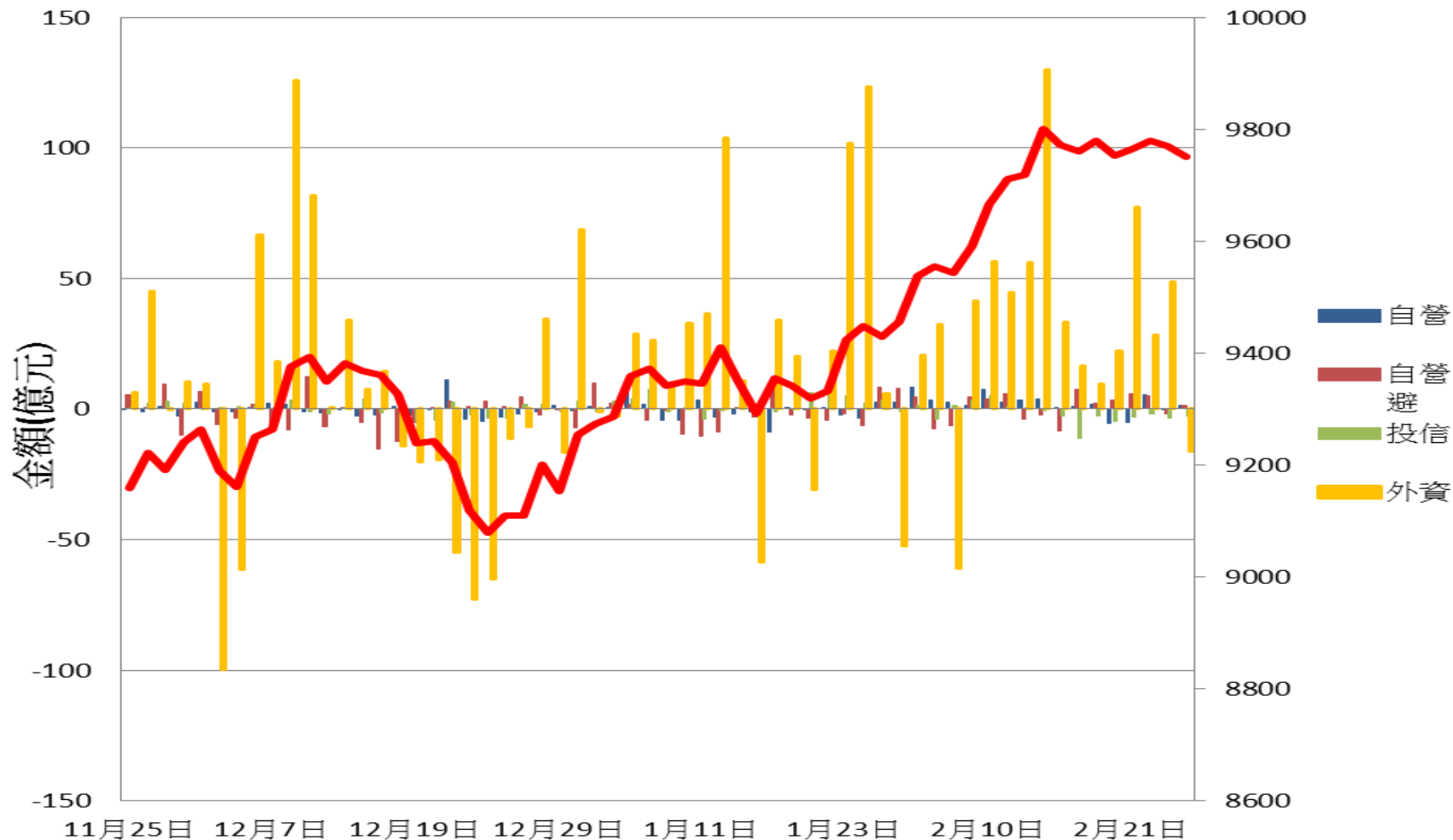
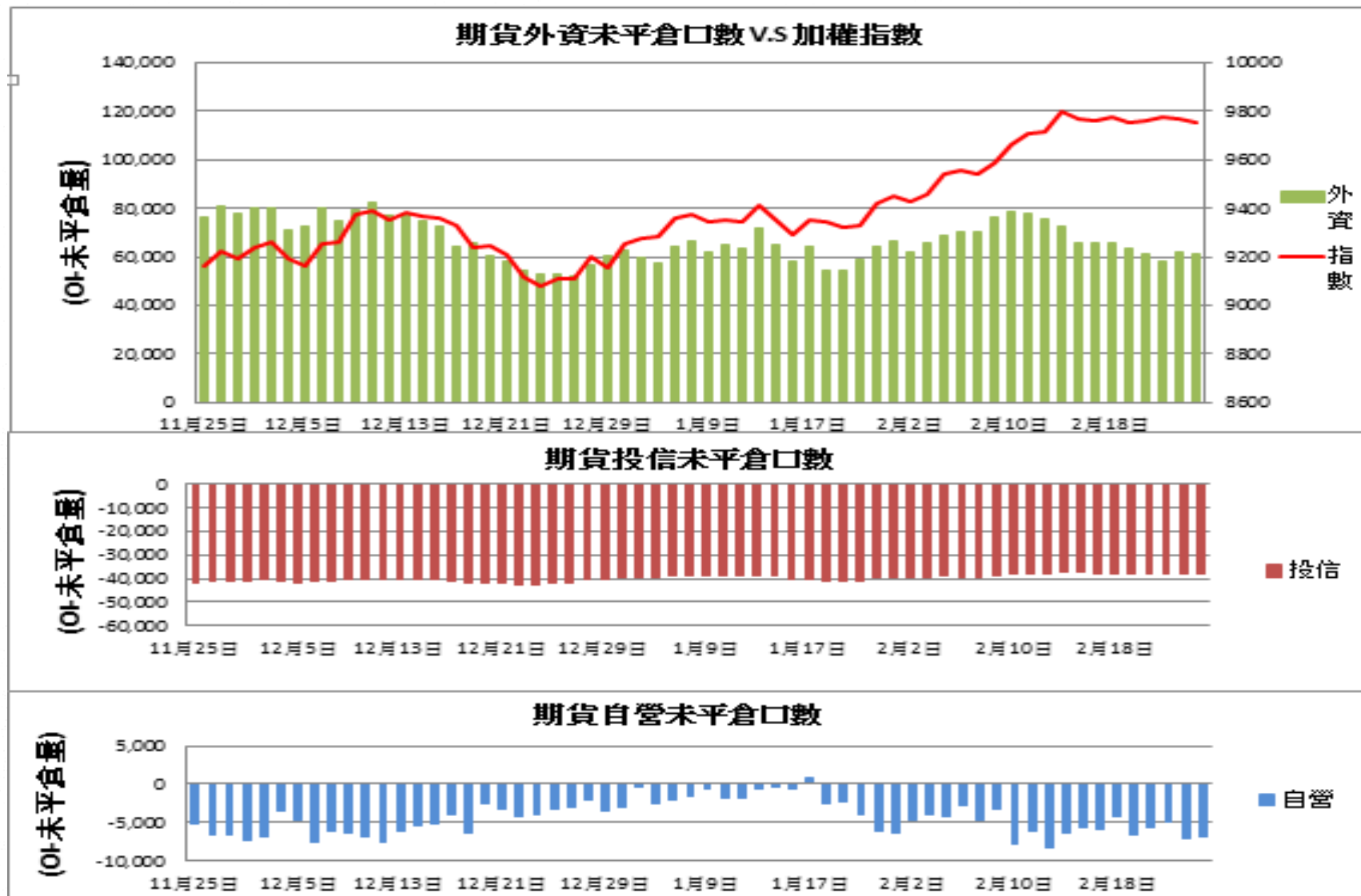
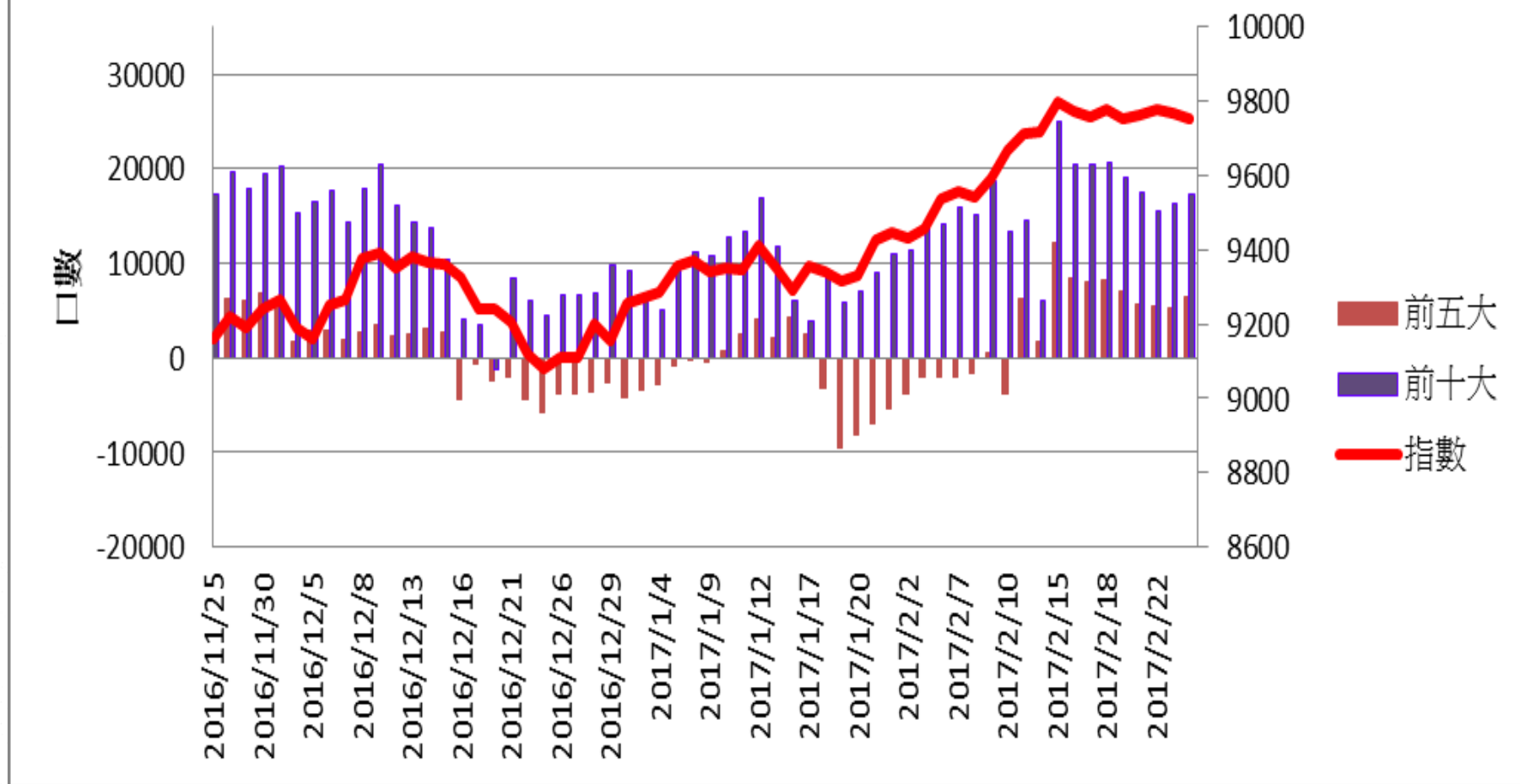


證券三大法人每日買賣超 v.s 加權指數

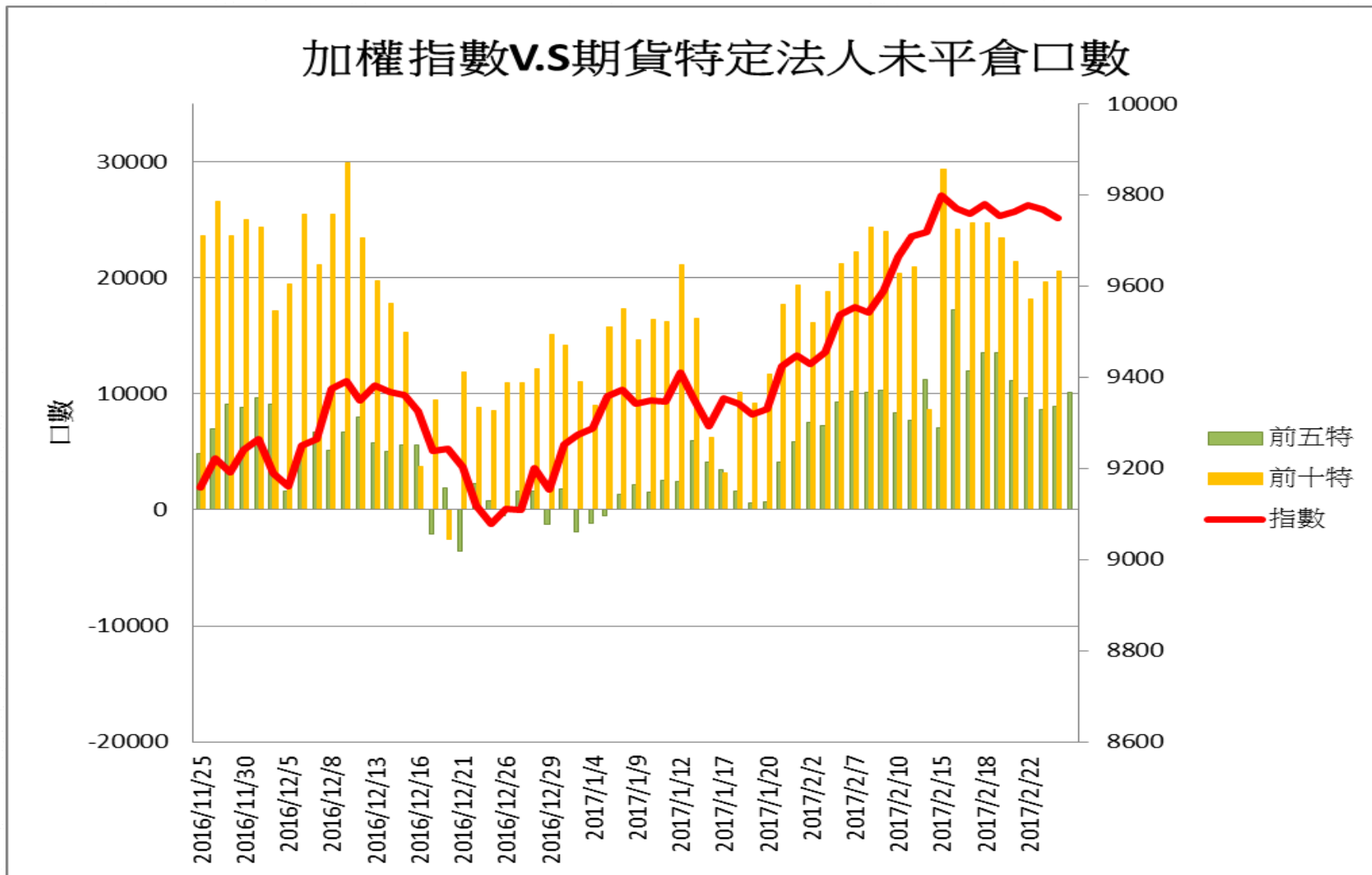




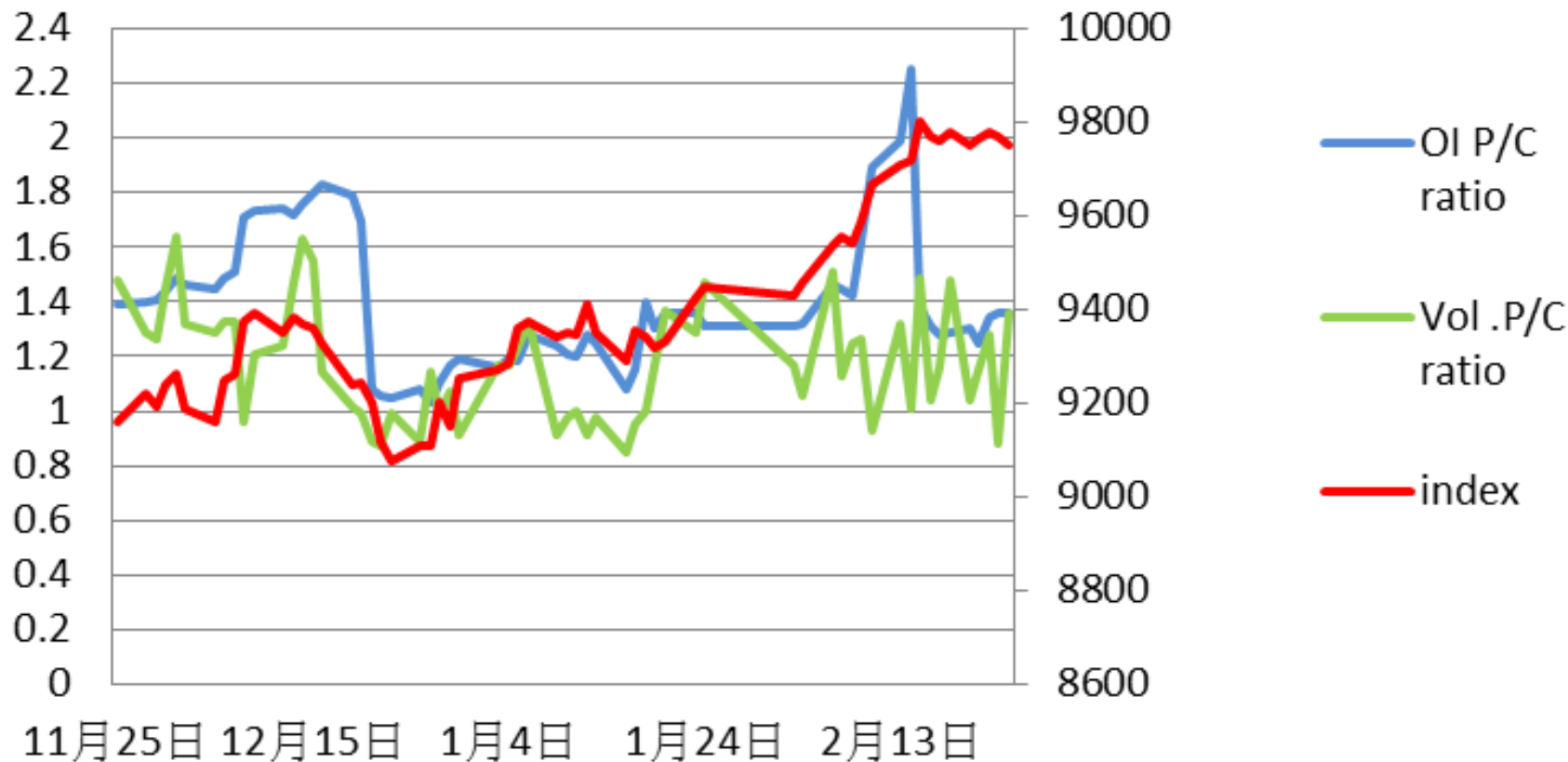
加權指數V.S期貨大額法人未平倉口數

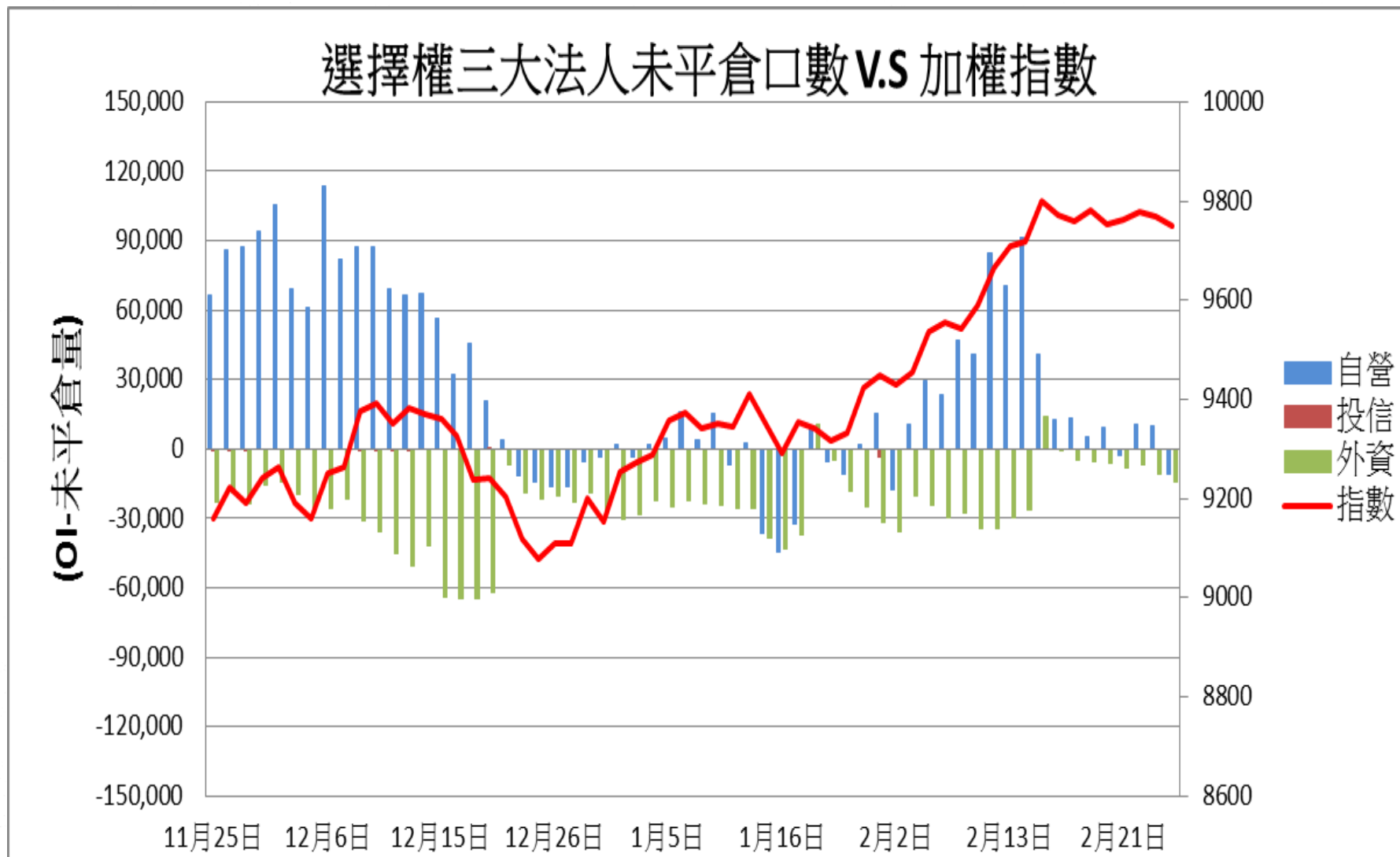


加權指數V.S期貨特定法人未平倉口數

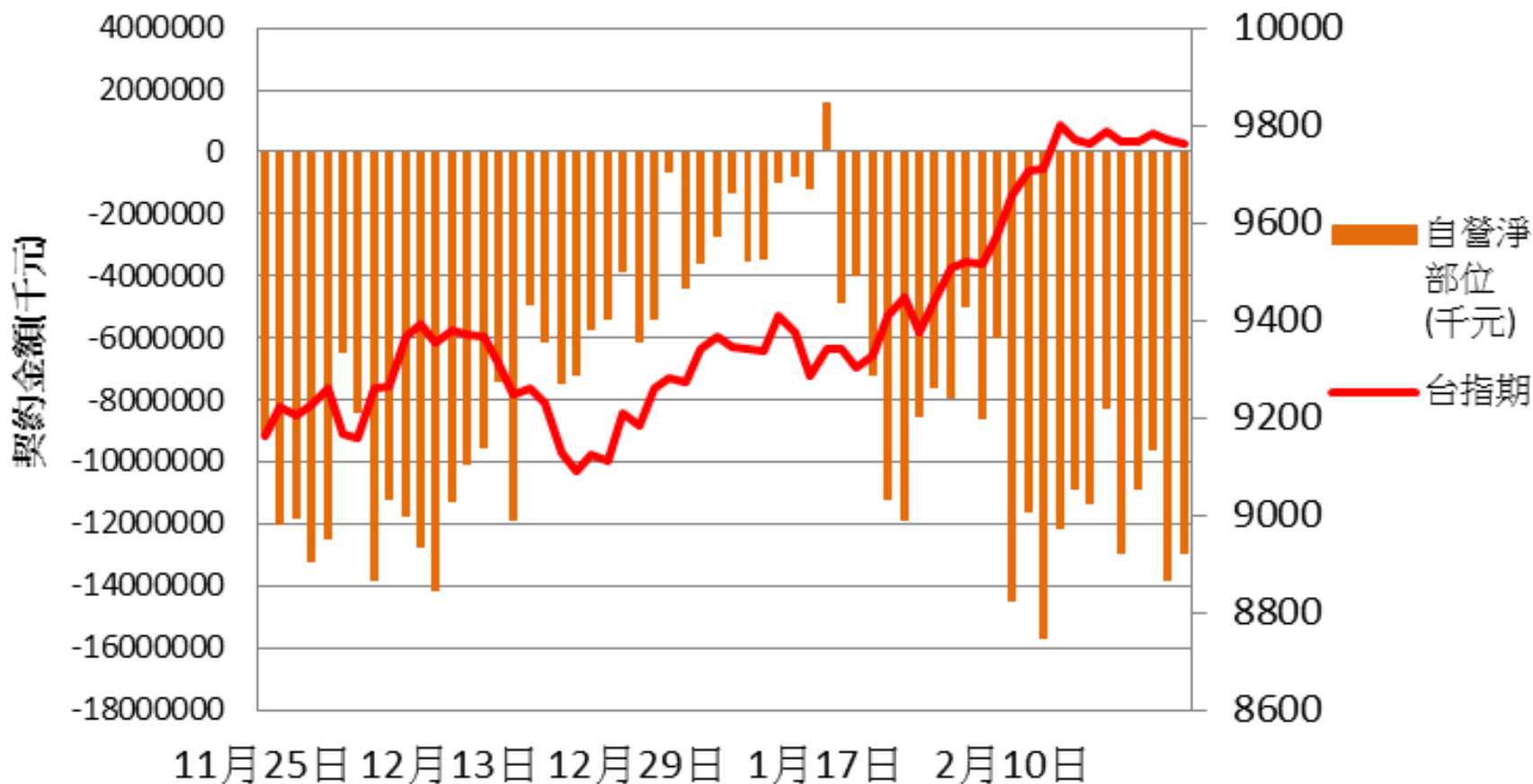


加權指數V.S未平倉量P/Cratio V.S 成交量 P/C ratio

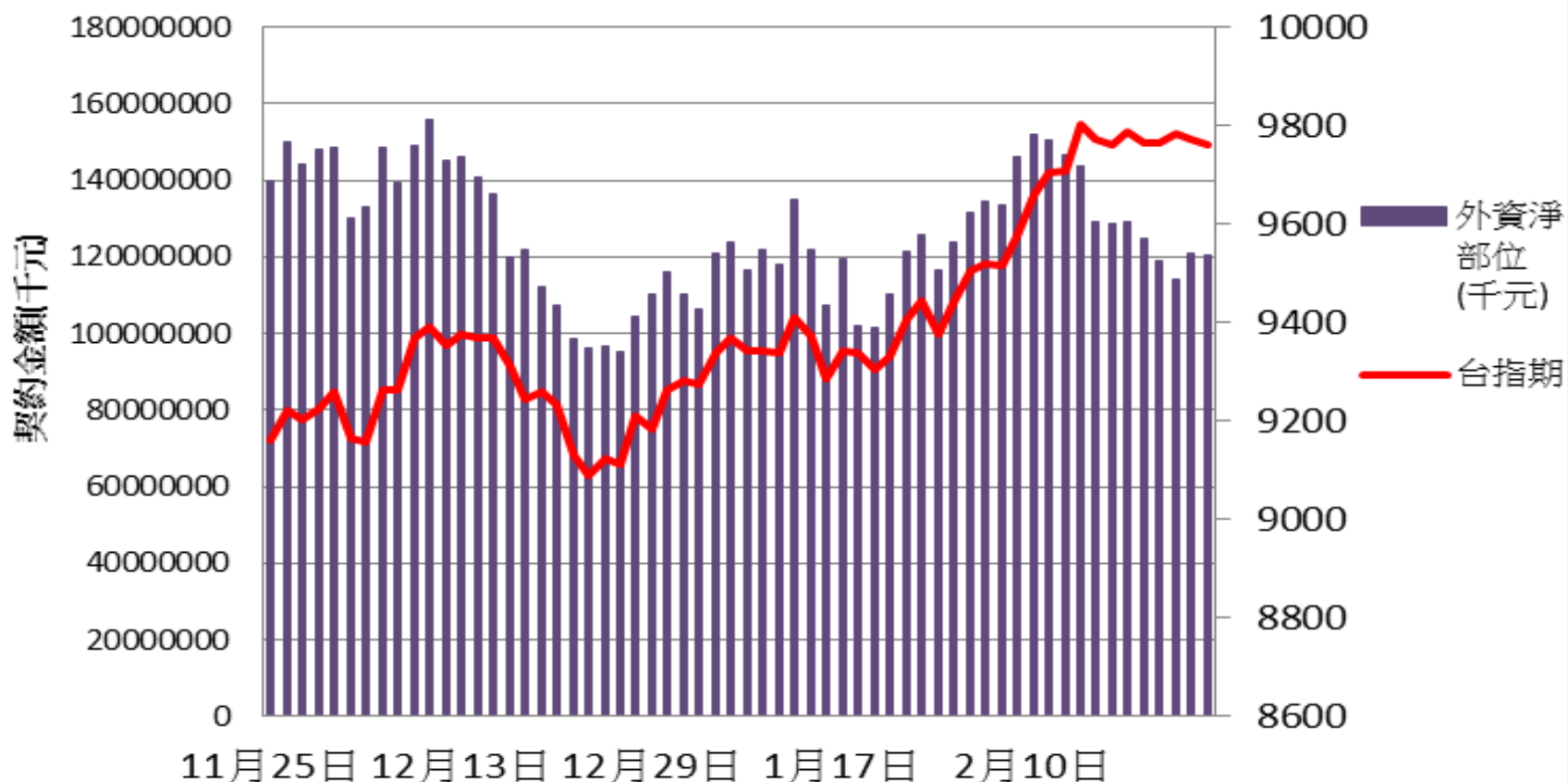




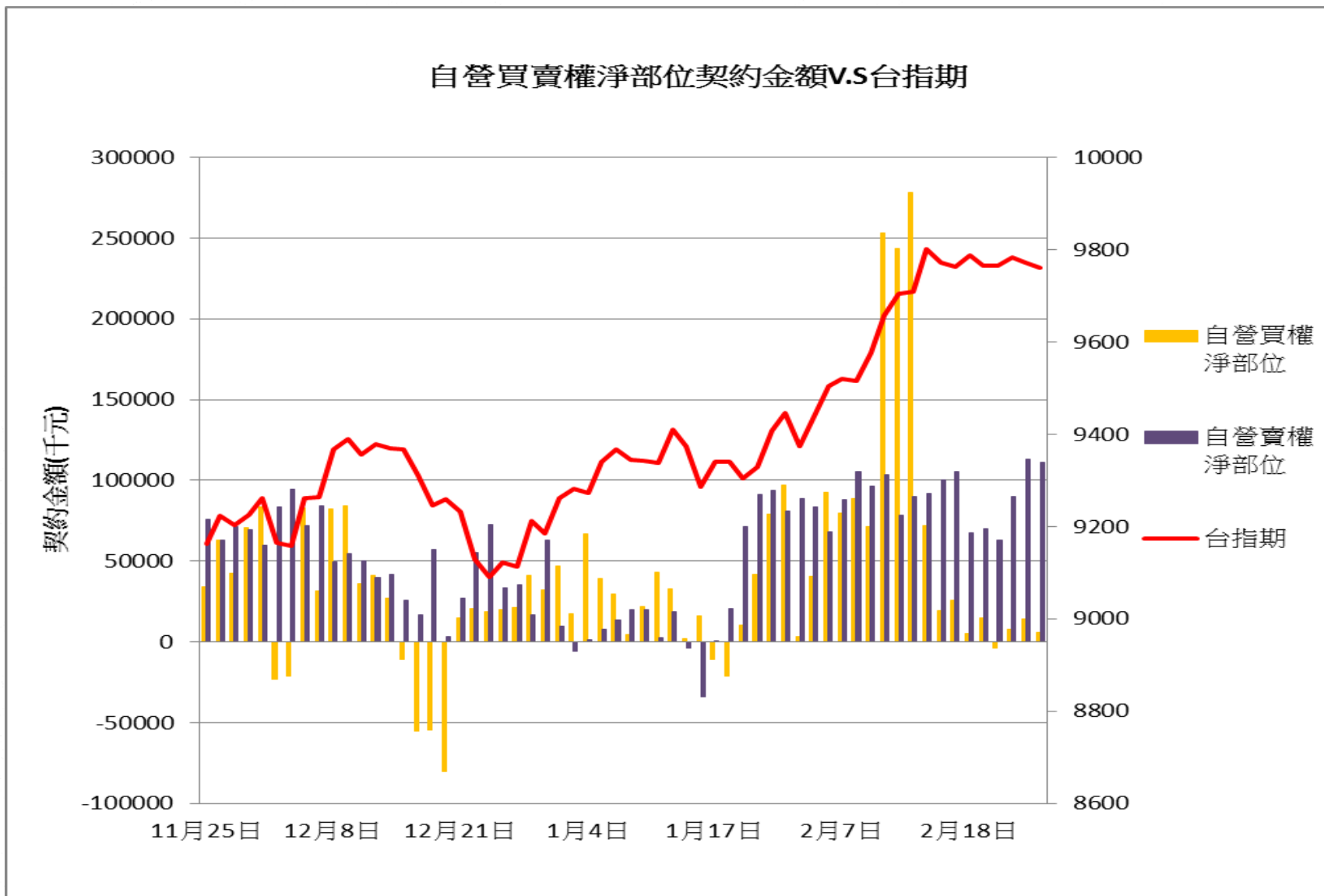
自營台指期與選擇權淨部位契約金額V.S台指期



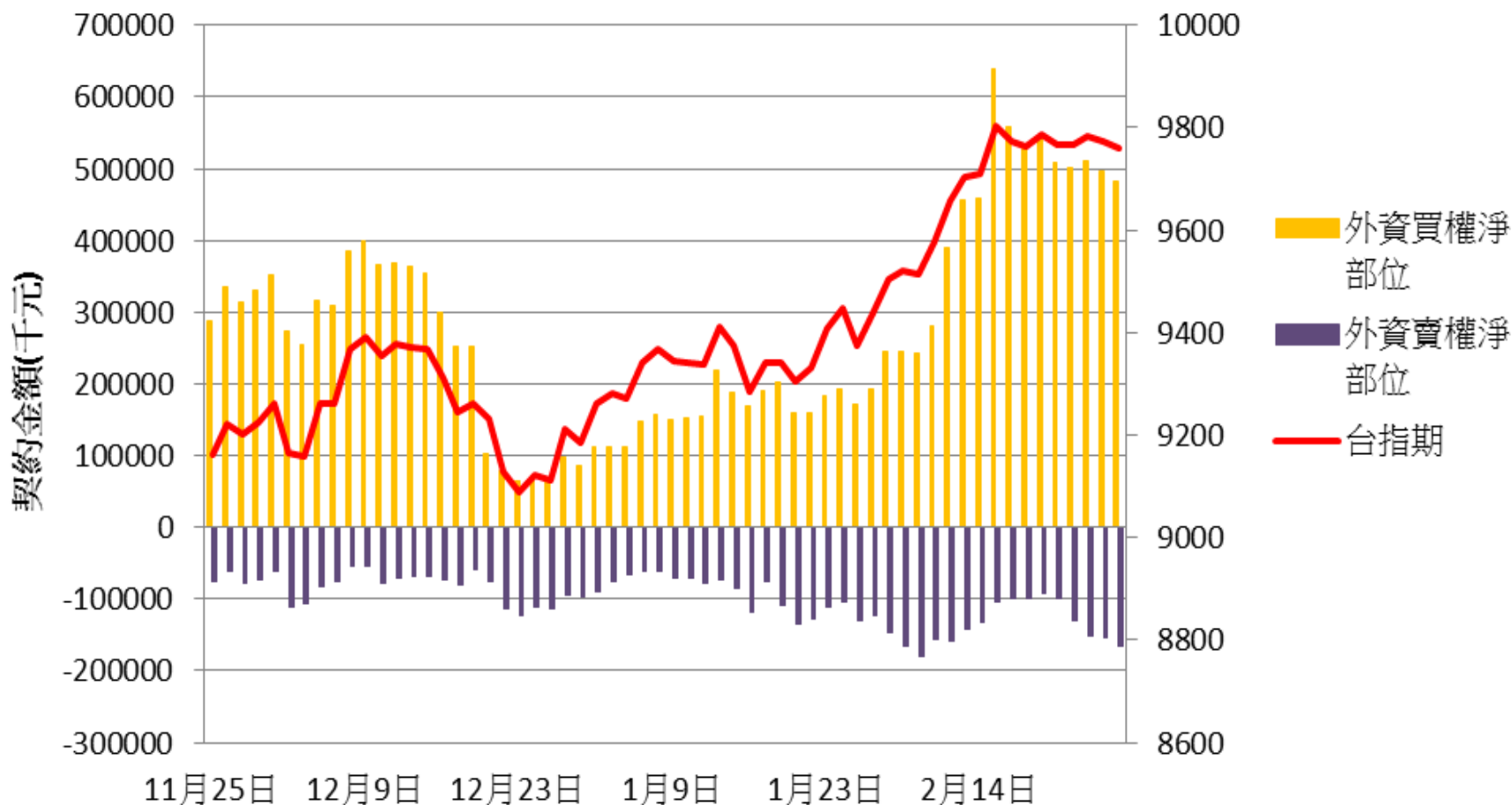
外資台指期與選擇權淨部位契約金額v.s台指期



自營買賣權淨部位契約金額V.S台指期



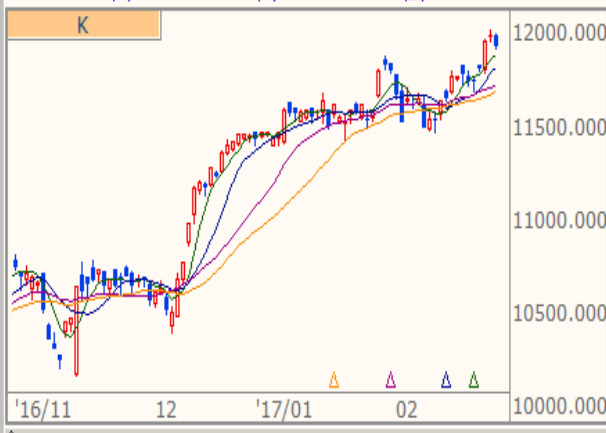
外資買賣權淨部位契約金額V.S台指期



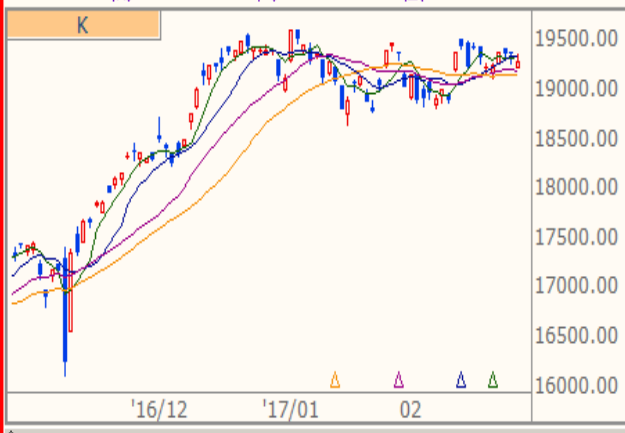
技術分析
CAC 法國巴黎(日) 4891.290 -4.590 -0.09%
18:00:00 開 4900.800 高 4916.440 低 4880.490



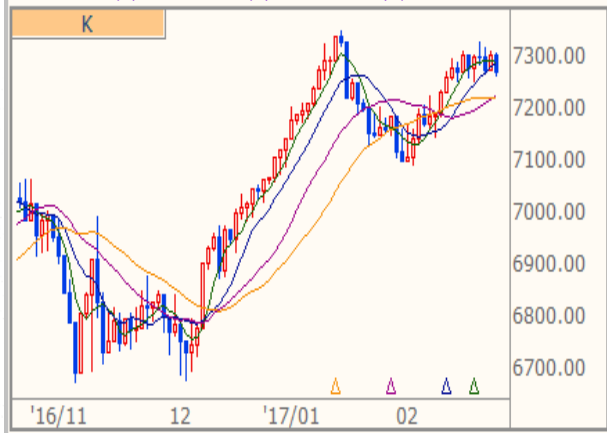
技術分析
DAX 法蘭克福(日) 11947.830 -50.760 -0.42%
17:45:00 開 11994.060 高 12015.980 低 11925.880



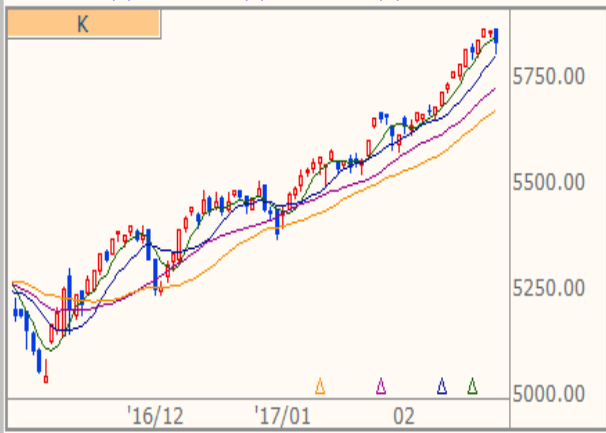
技術分析
NKI 日經指數(日) ↑ 19283.540 -87.920 -0.45%
15:00:01 開 19232.110 高 19381.100 低 19219.580



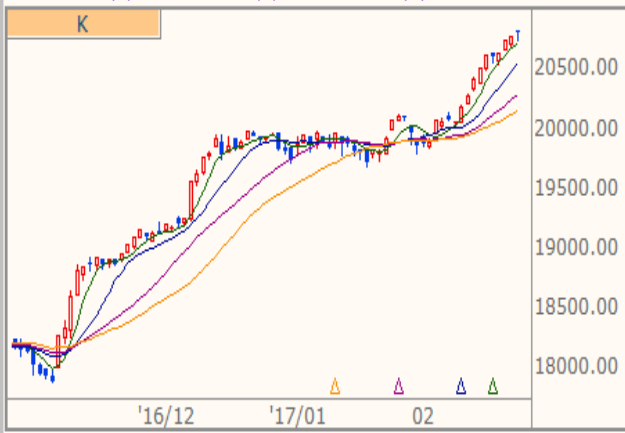
技術分析
FTH 時報金融(日) ↑ 7271.370 -30.880 -0.42%
16:35:29 開 7302.250 高 7310.050 低 7262.940



技術分析
NAS NASDAQ(日) ↑ 5835.510 -25.120 -0.43%
16:00:00 開 5866.820 高 5866.960 低 5809.550



技術分析
DJI 道瓊指數(日) 20810.320 +34.720 +0.17%
16:40:47 開 20817.210 高 20840.700 低 20746.410





技術分析



TWD 台幣(日) 買 30.690 賣 30.703 -0.045 -0.1464% 07:35:00



技術分析



TWI 加權指數(日) 9750.470 -18.840 -0.19% 13:31:00 開9757.670 高9784.390 低9740.180

