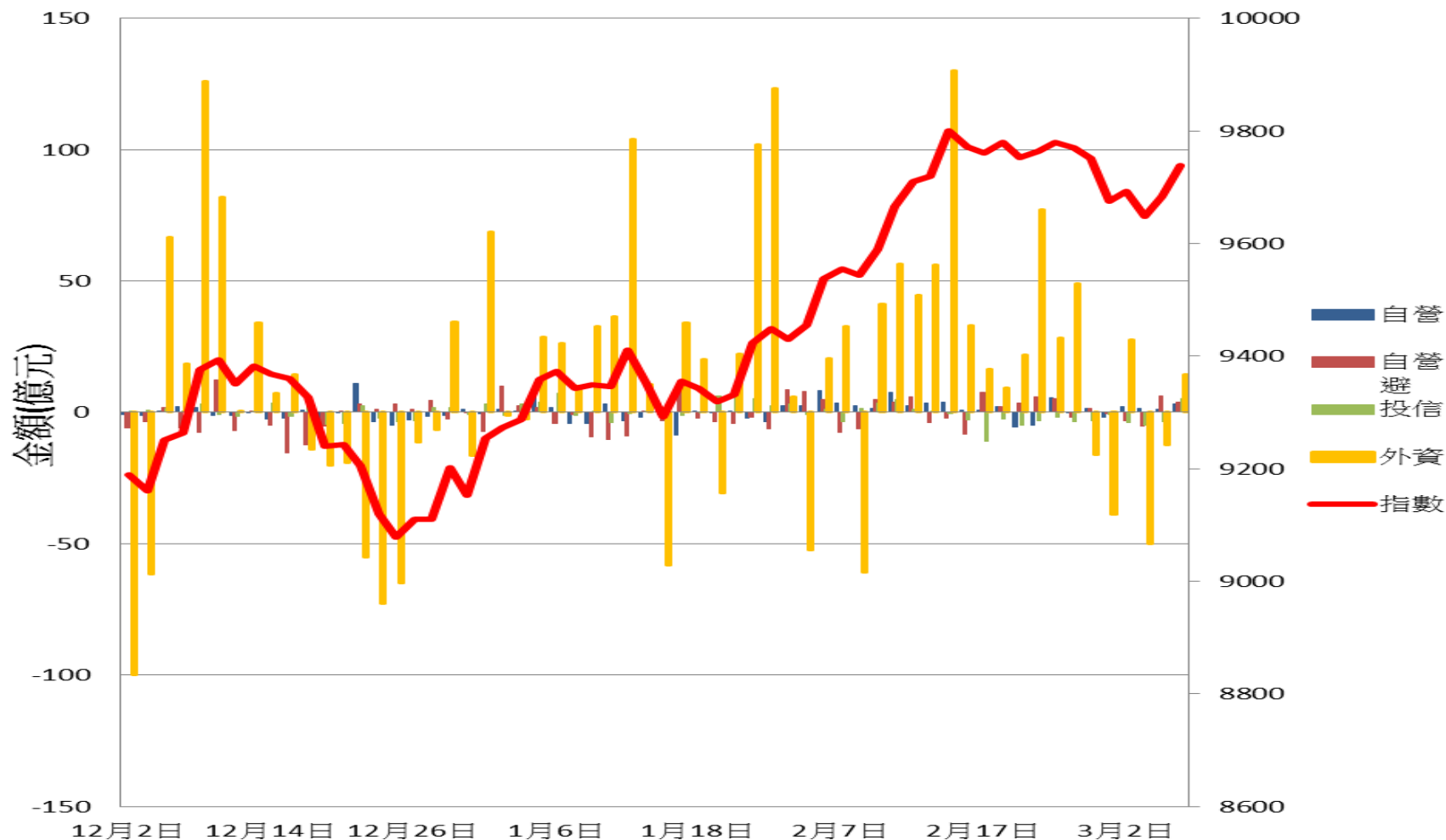
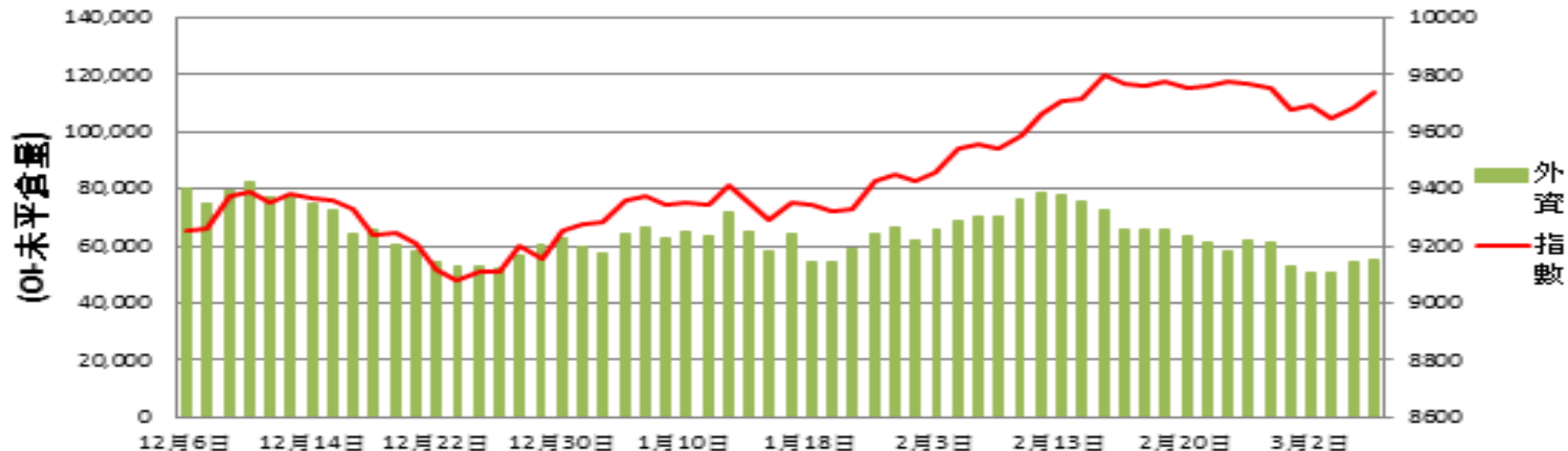


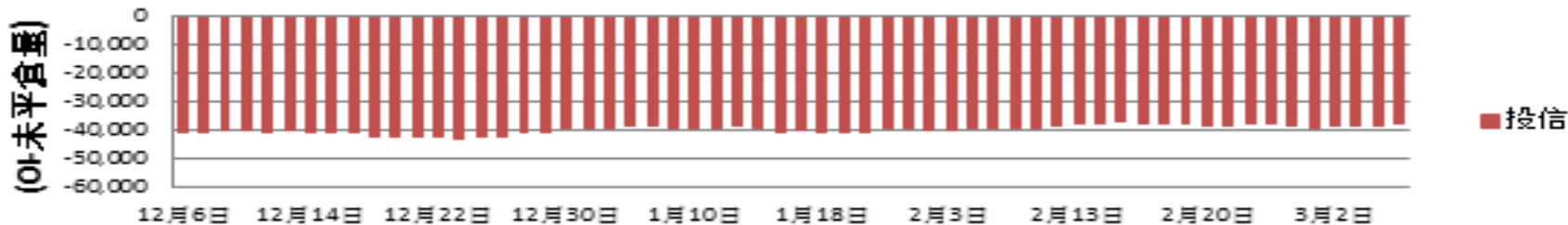
證券三大法人每日買賣超 V.S 加權指數



期貨外資未平倉口數 V.S 加權指數



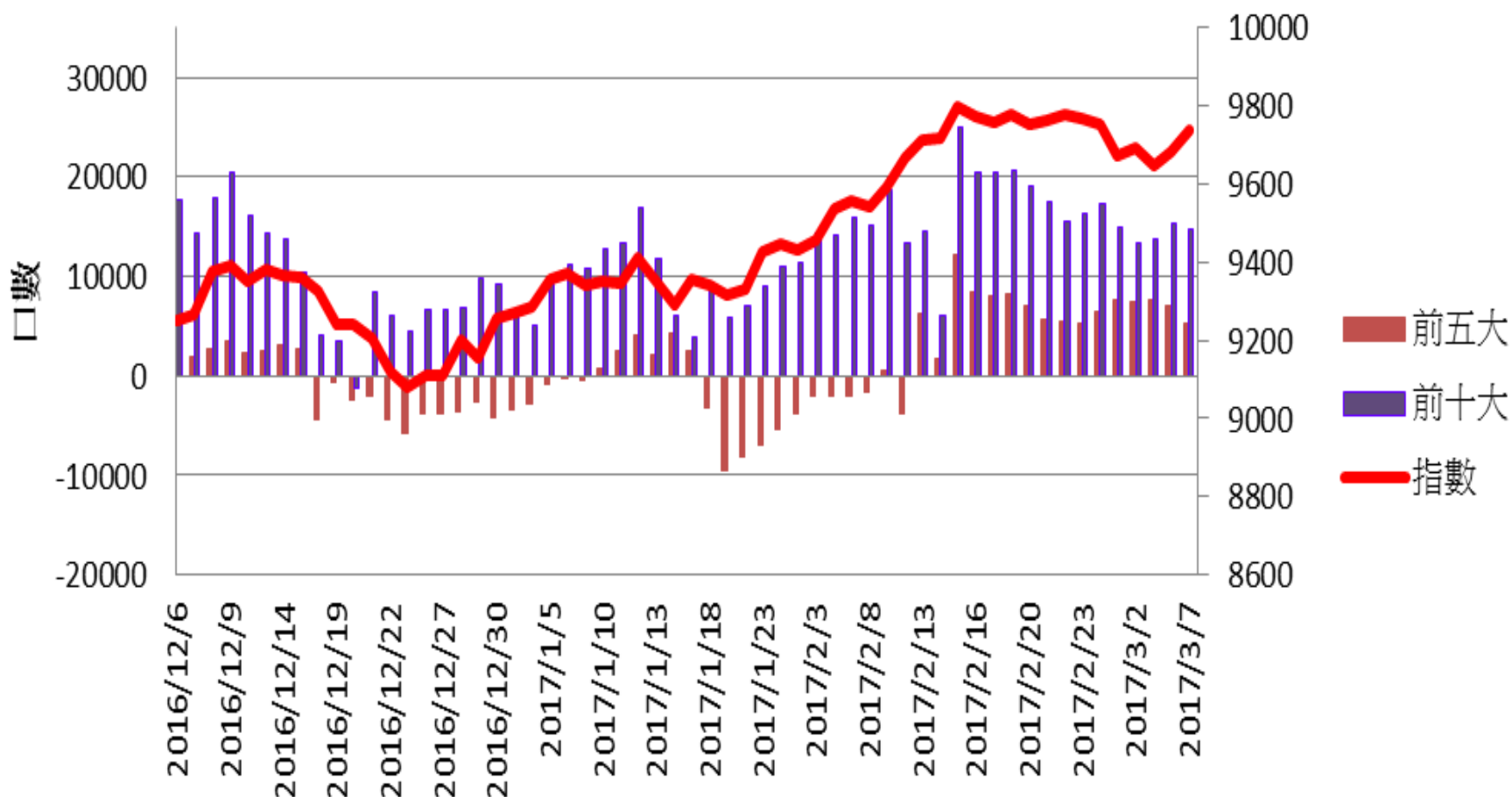
期貨投信未平倉口數



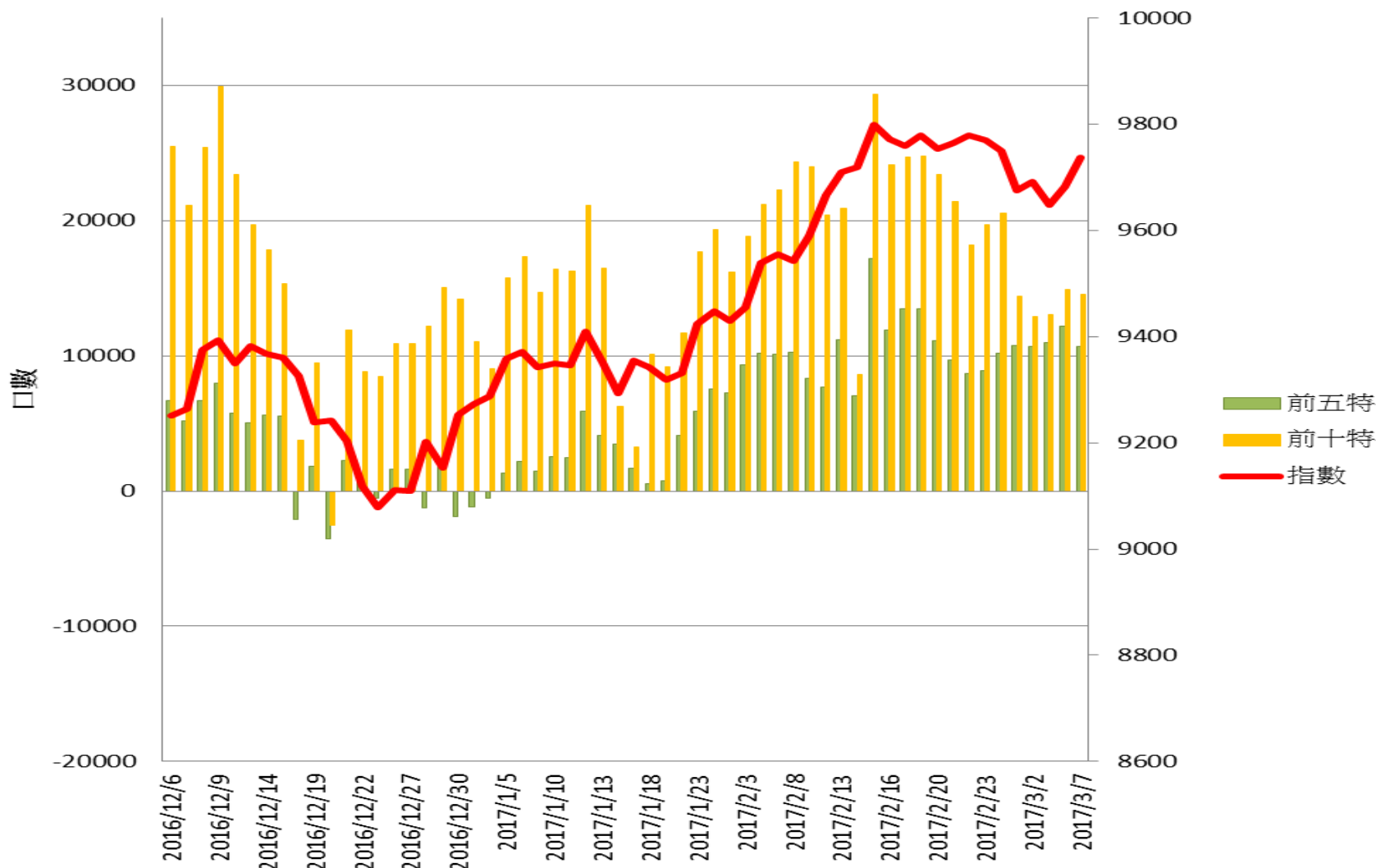
期貨自營未平倉口數



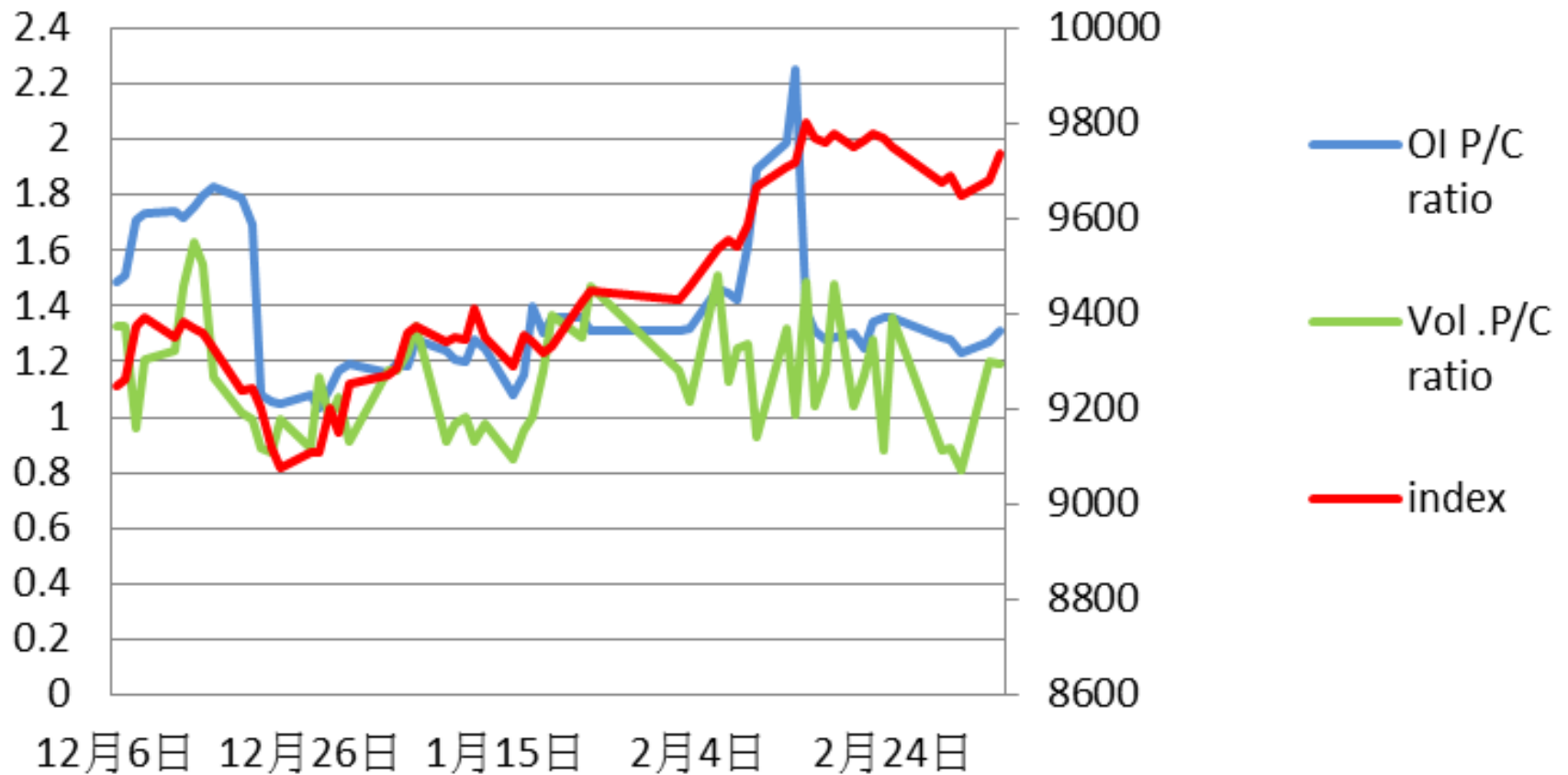
加權指數V.S期貨大額法人未平倉口數



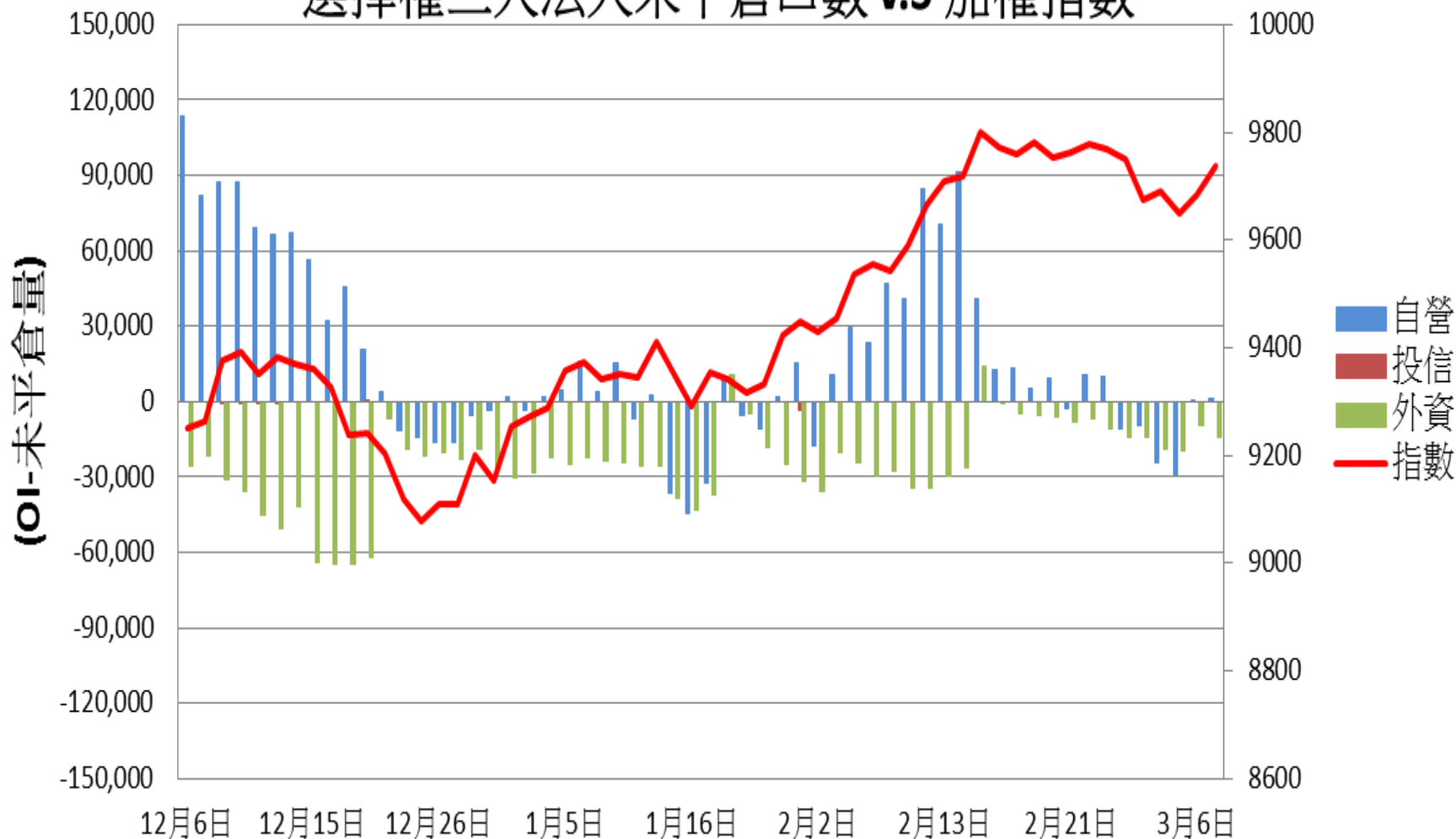
加權指數V.S期貨特定法人未平倉口數



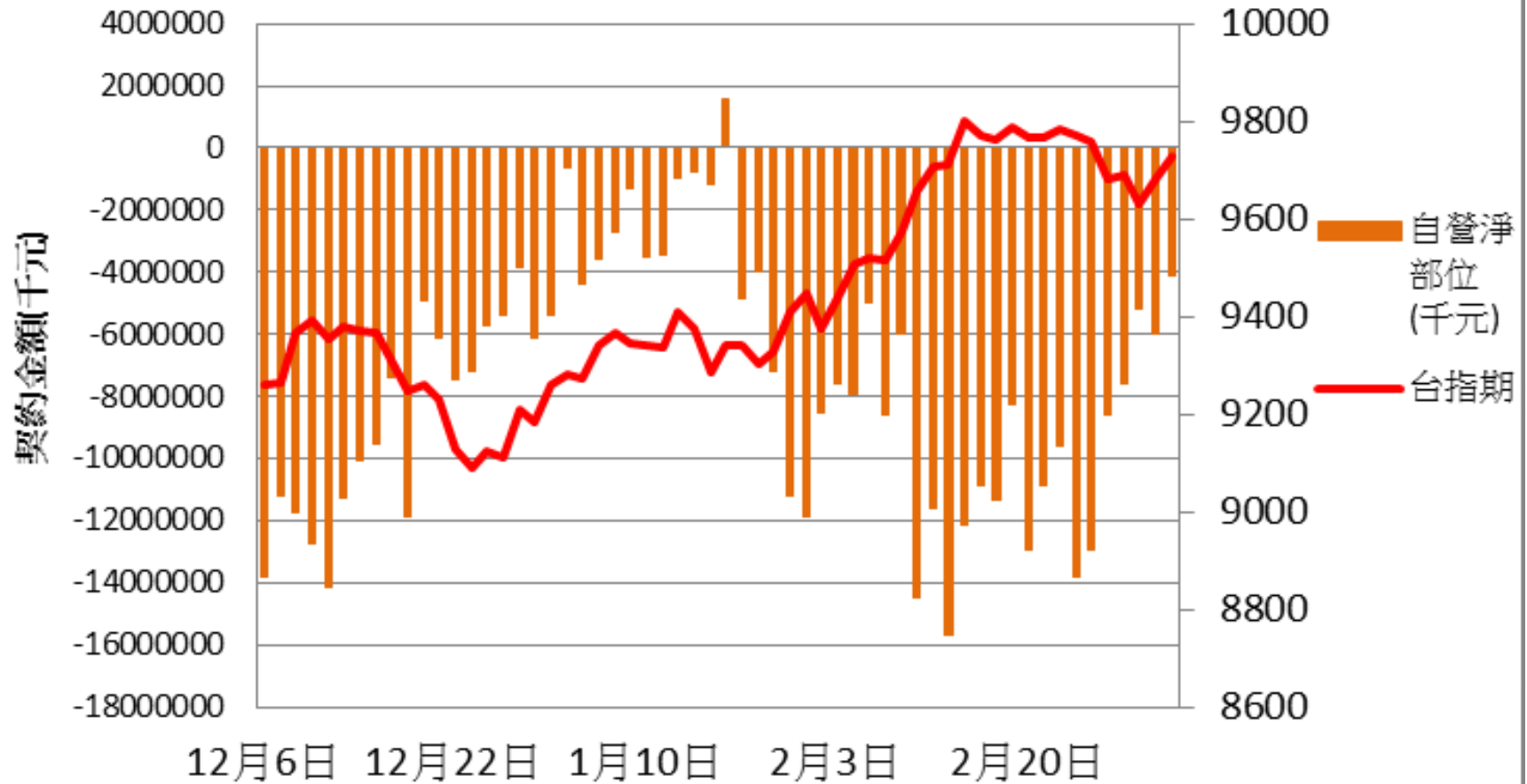
加權指數 V.S 未平倉量 P/C ratio V.S 成交量 P/C ratio



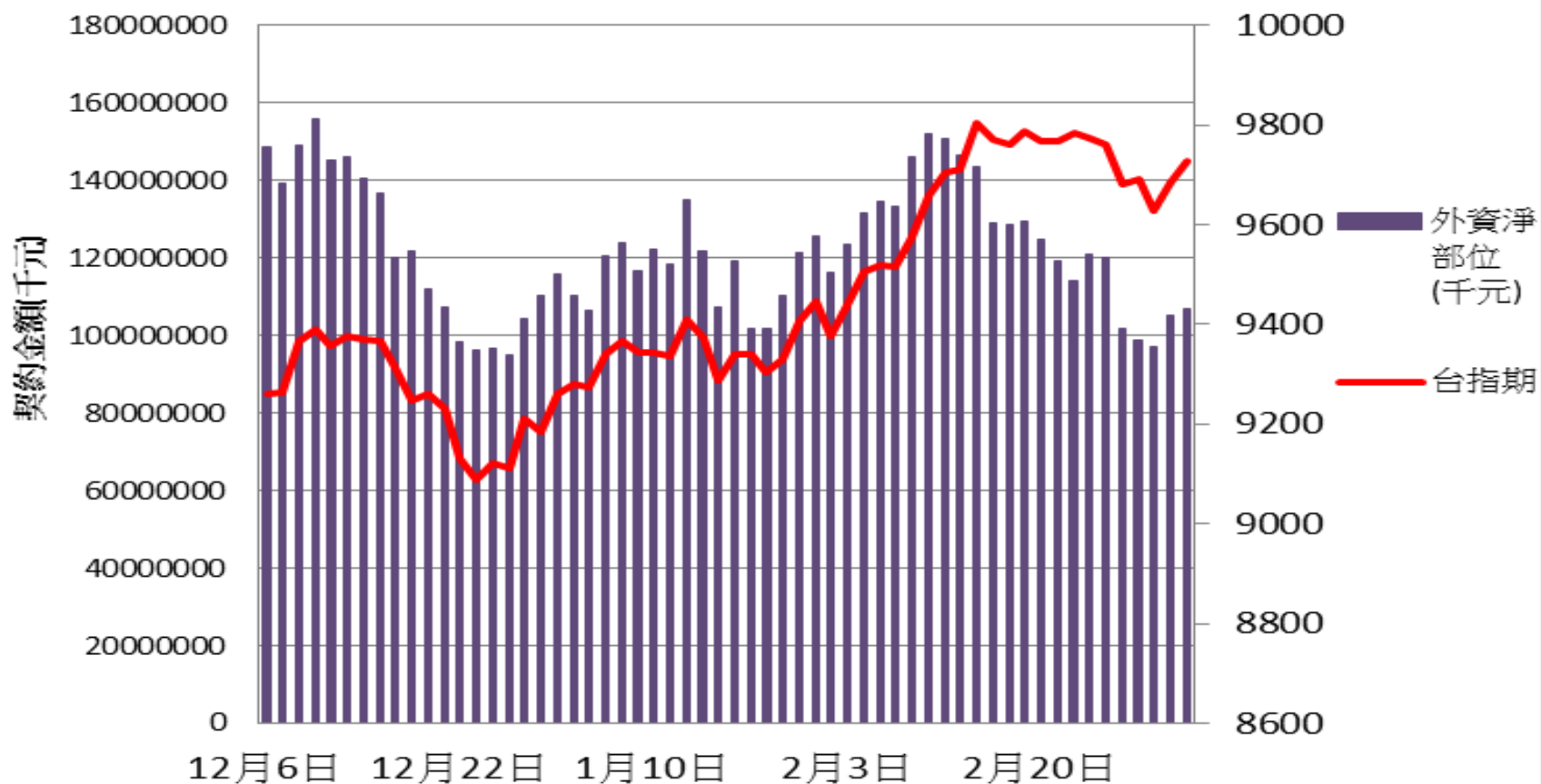
選擇權三大法人未平倉口數 V.S 加權指數



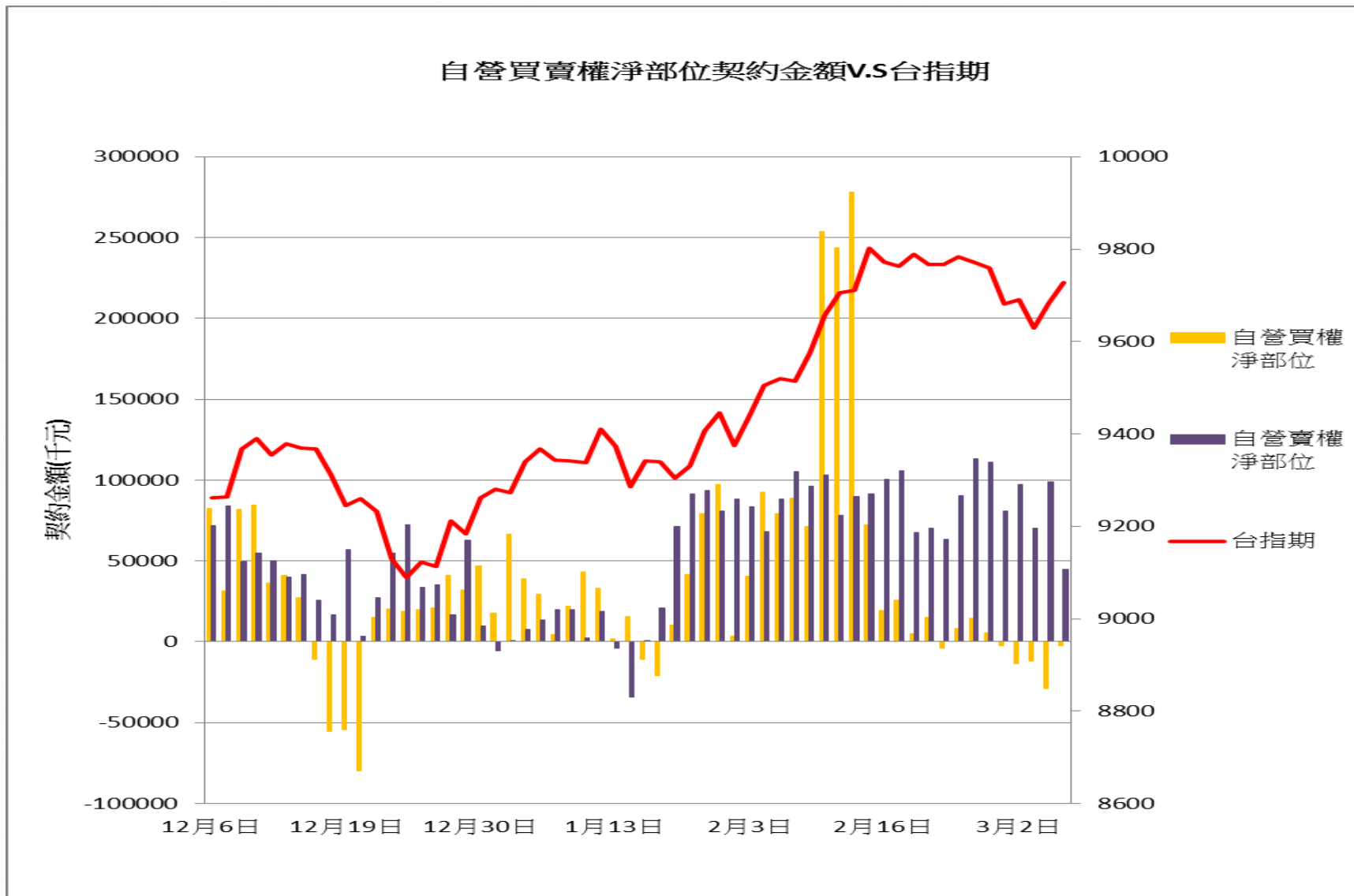
自營台指期與選擇權淨部位契約金額V.S台指期



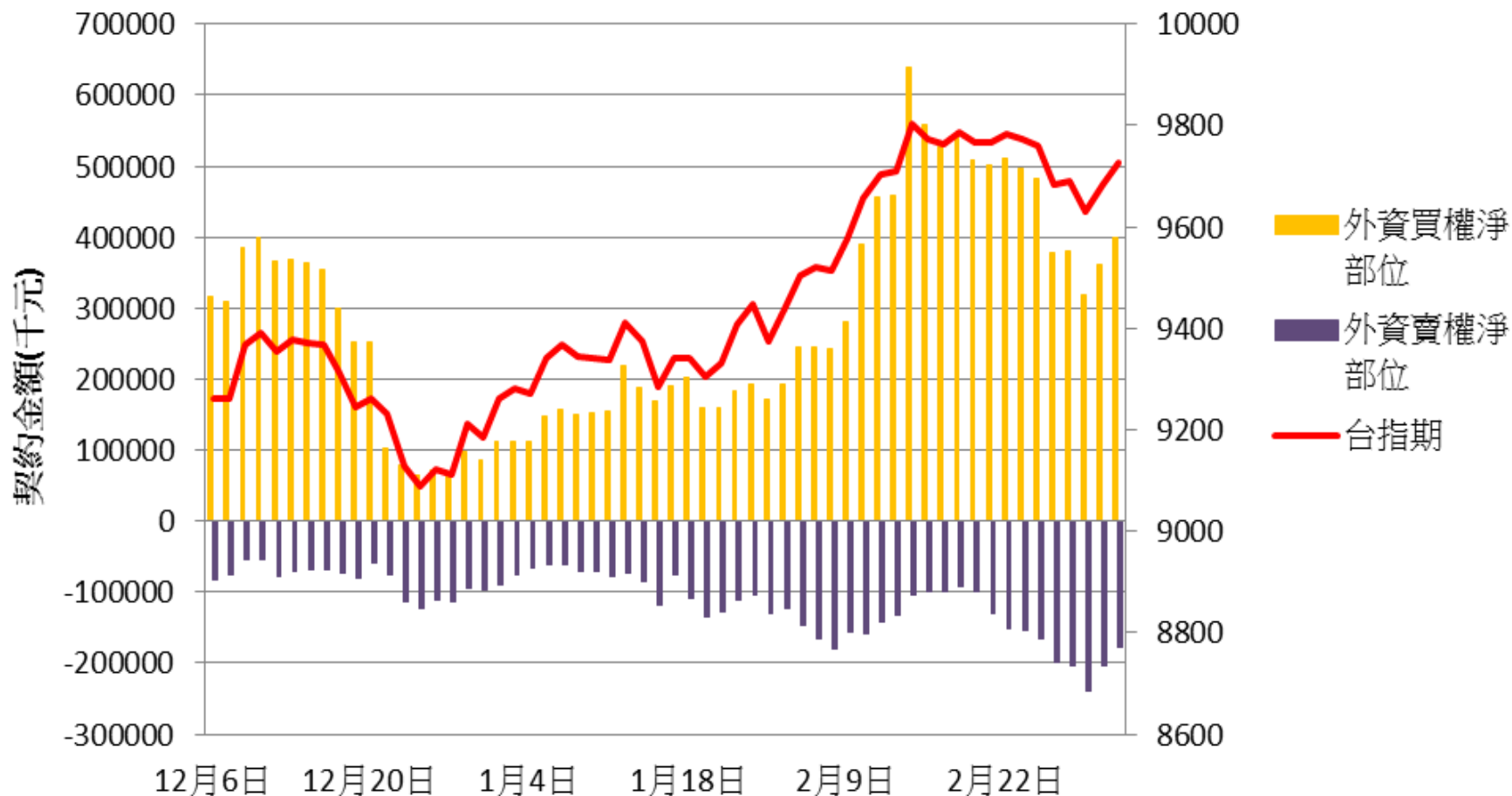
外資台指期與選擇權淨部位契約金額V.S台指期



自營買賣權淨部位契約金額V.S台指期



外資買賣權淨部位契約金額V.S台指期

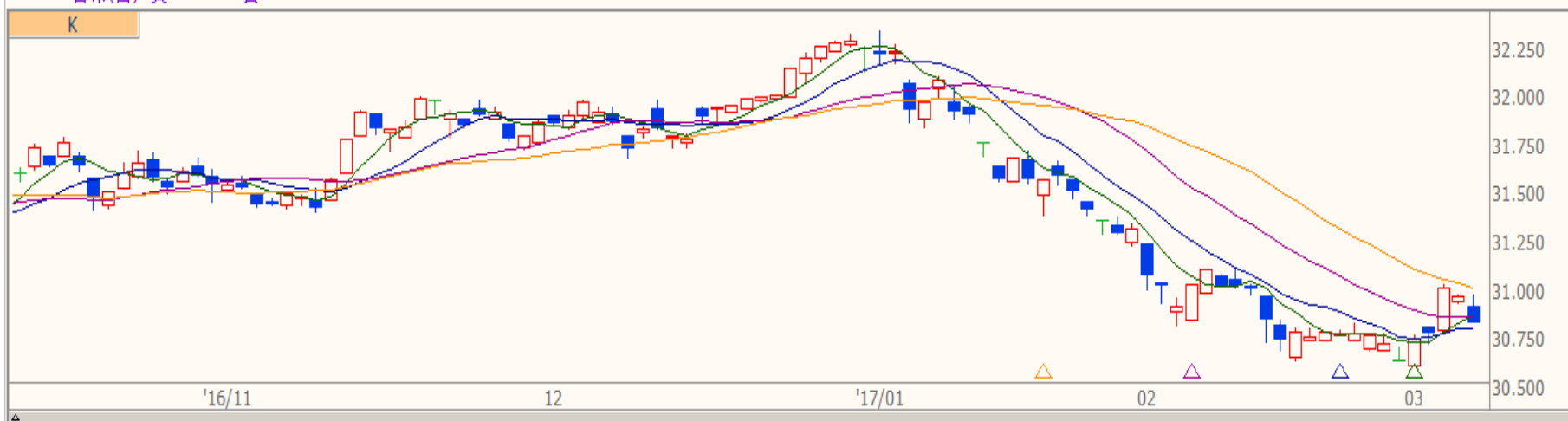






技術分析

TWD 台幣(日) 買 30.850 賣 30.870 -0.126 -0.4068% 07:40:00



技術分析

TWI 加權指數(日) 9738.070 +55.440 +0.57% 13:31:00 開 9690.260 高 9738.070 低 9690.200

