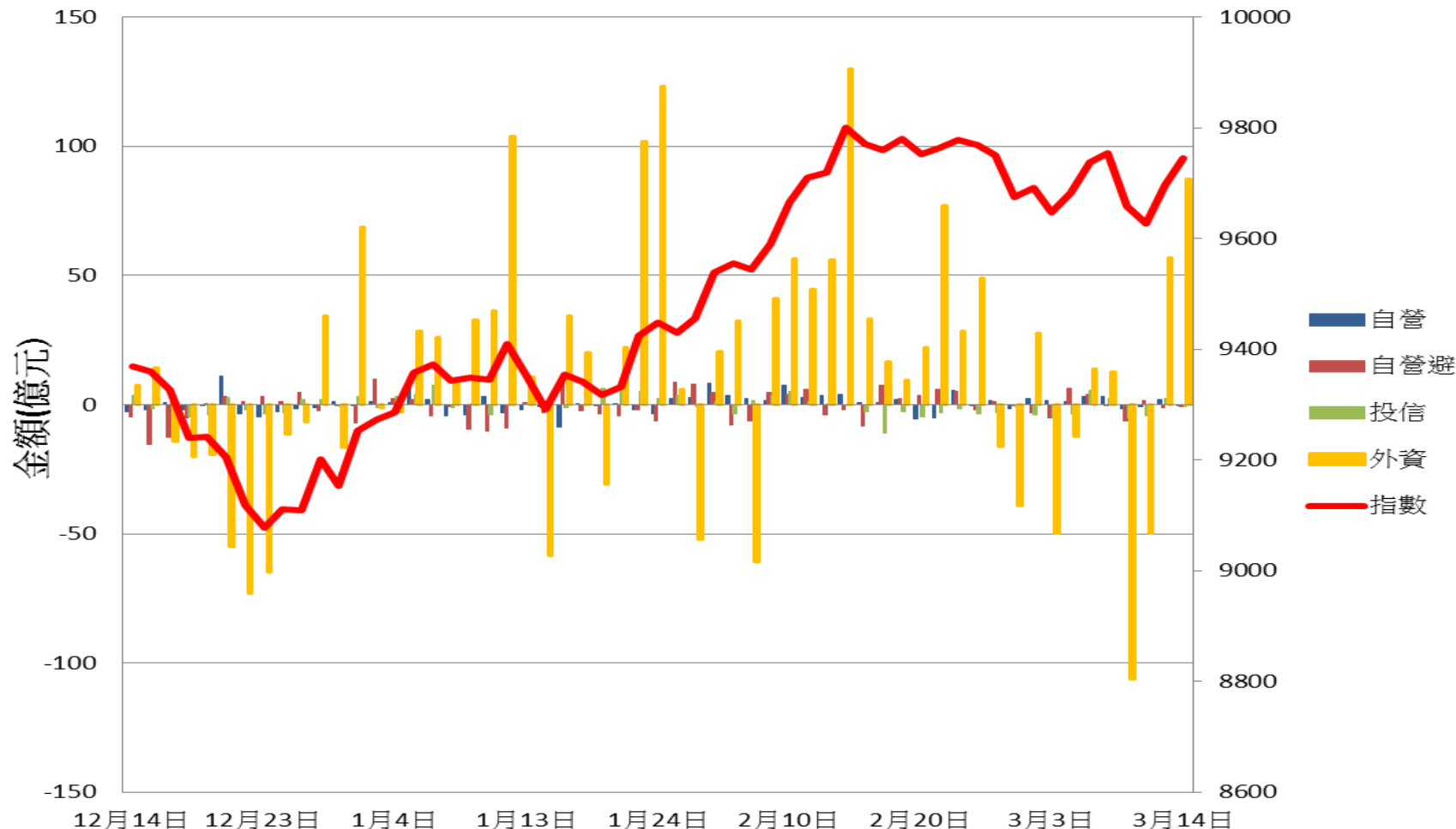
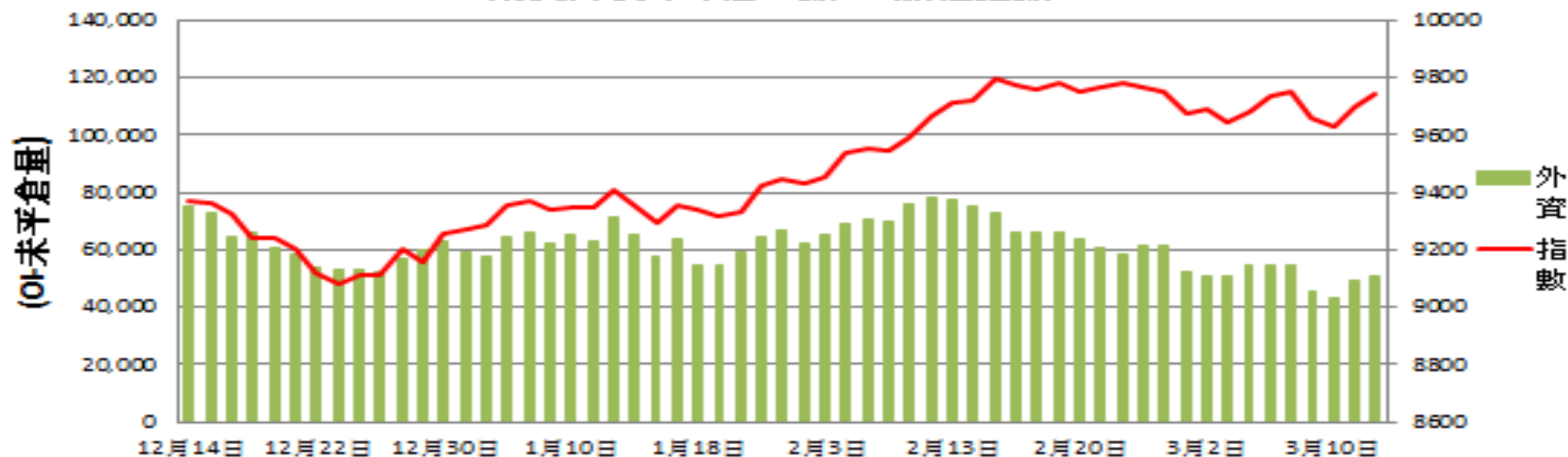


證券三大法人每日買賣超 V.S 加權指數



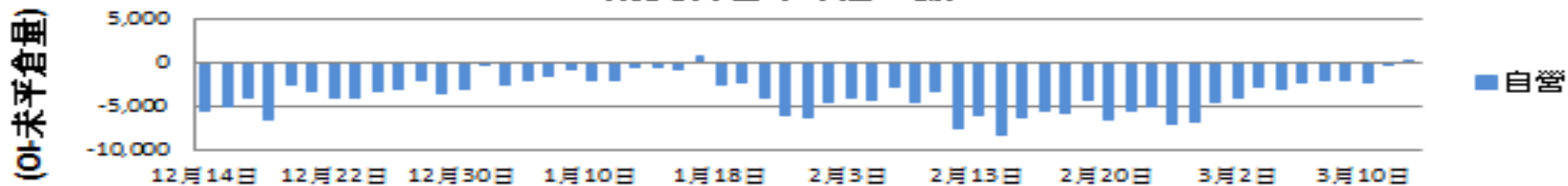
期貨外資未平倉口數 V.S 加權指數



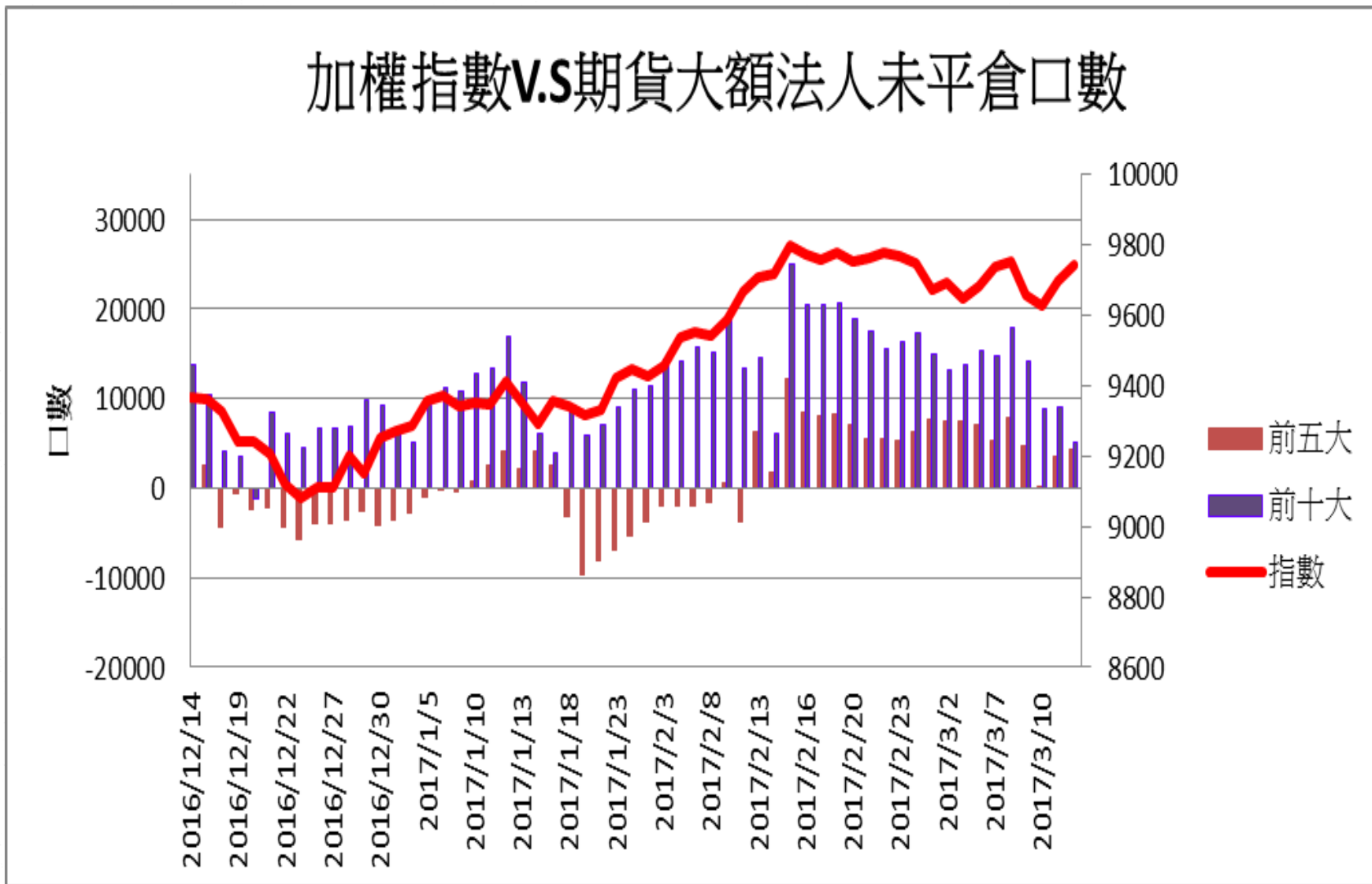
期貨投信未平倉口數



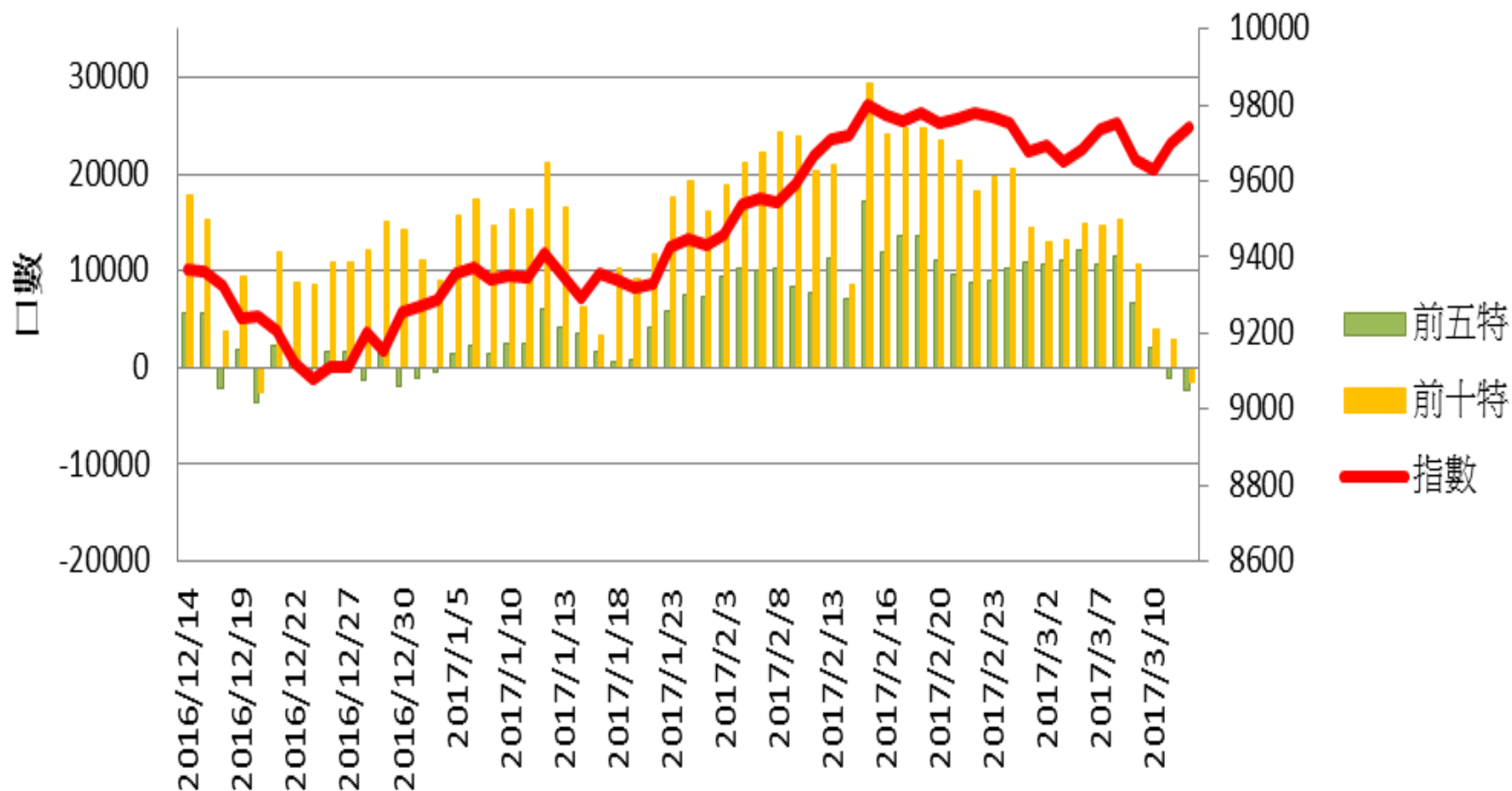
期貨自營未平倉口數



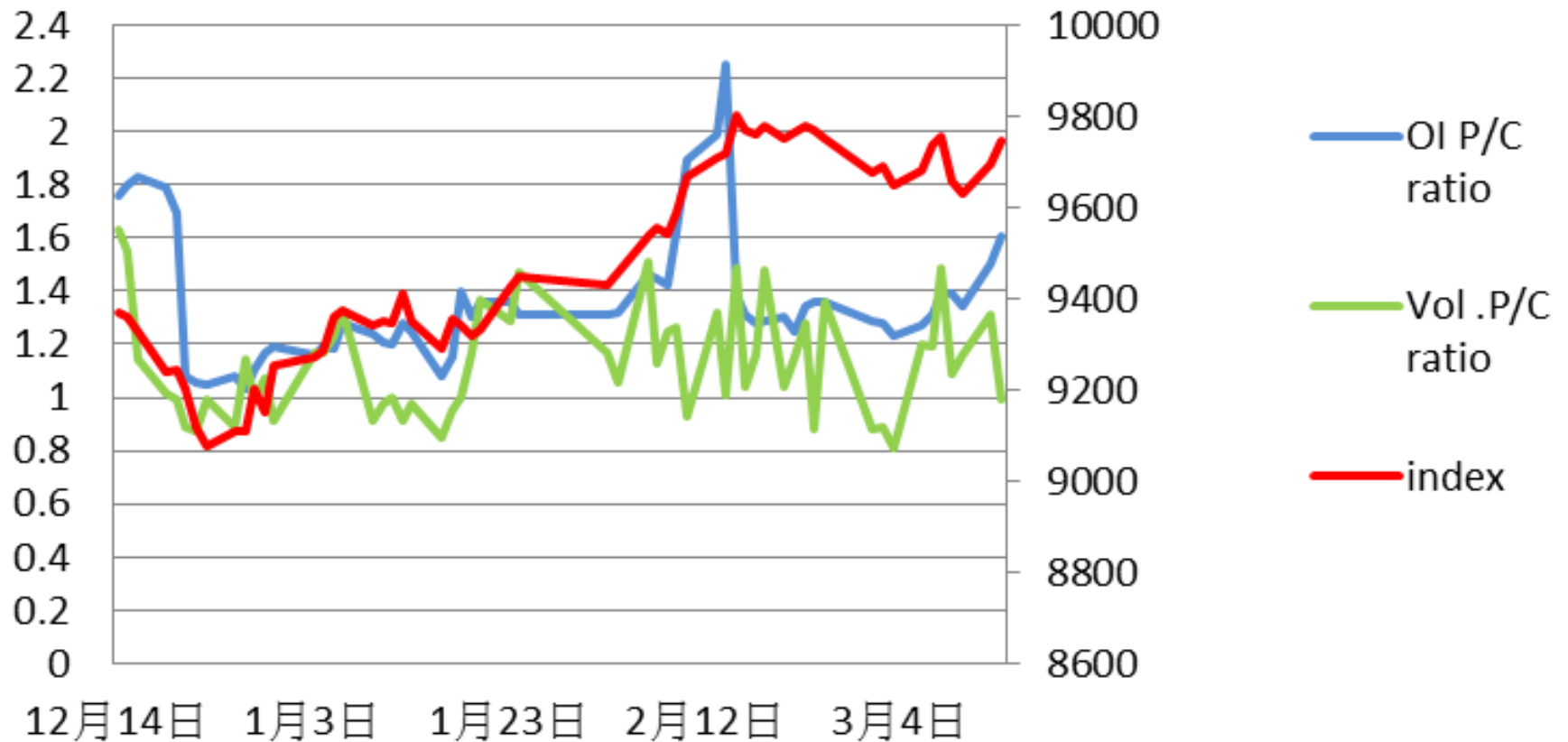
加權指數V.S期貨大額法人未平倉口數

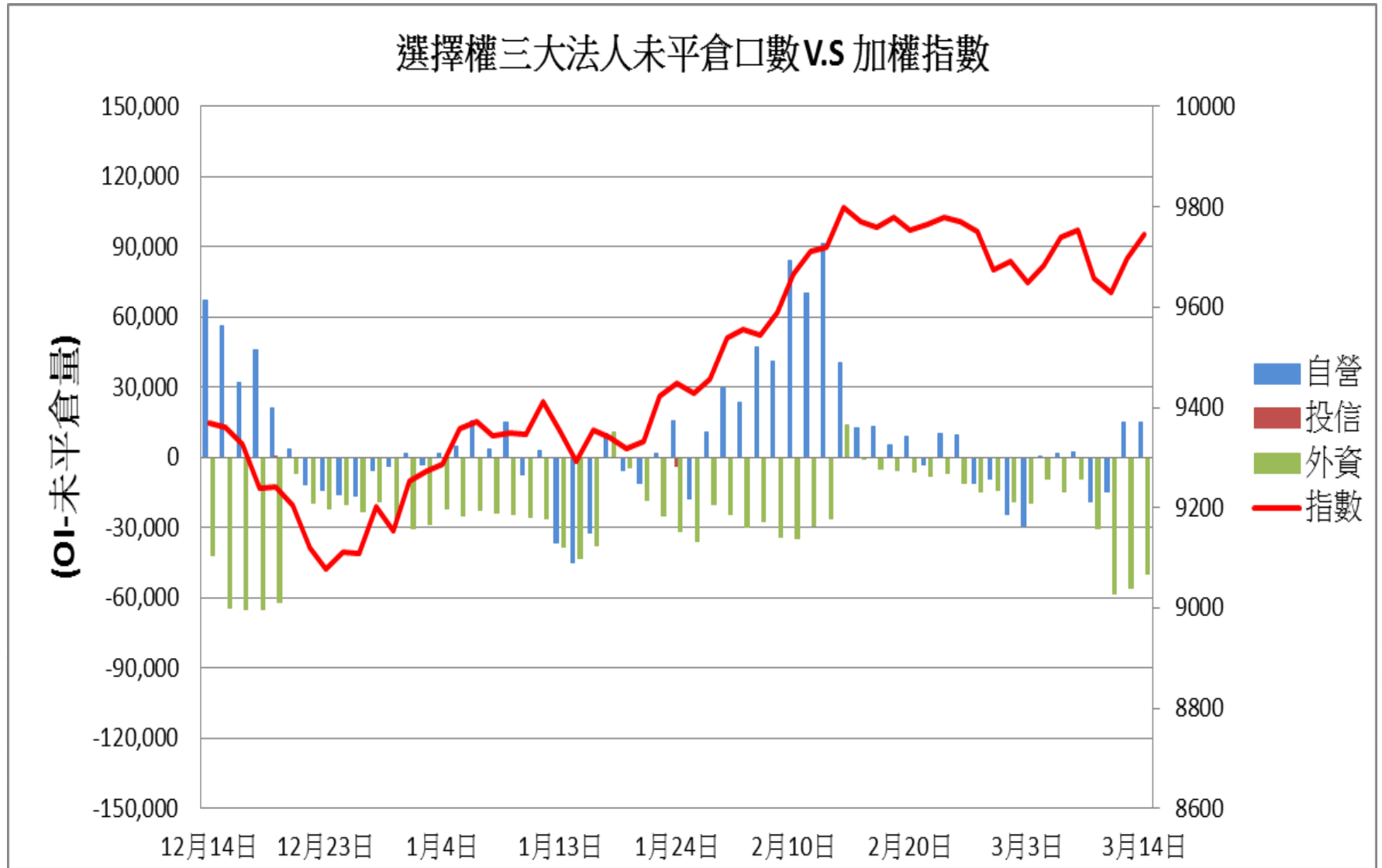


加權指數V.S期貨特定法人未平倉口數

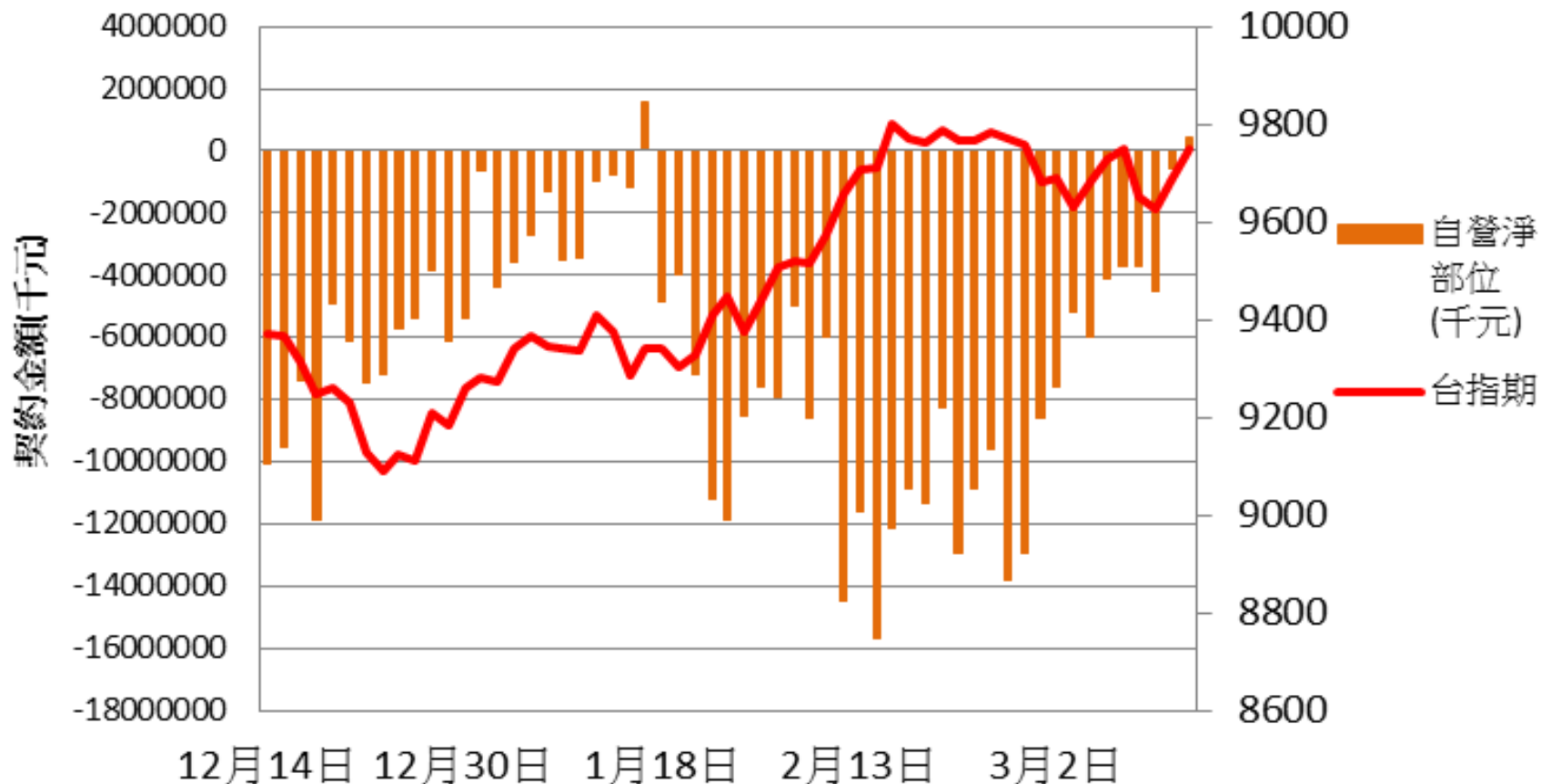


加權指數V.S未平倉量P/Cratio V.S 成交量P/C ratio

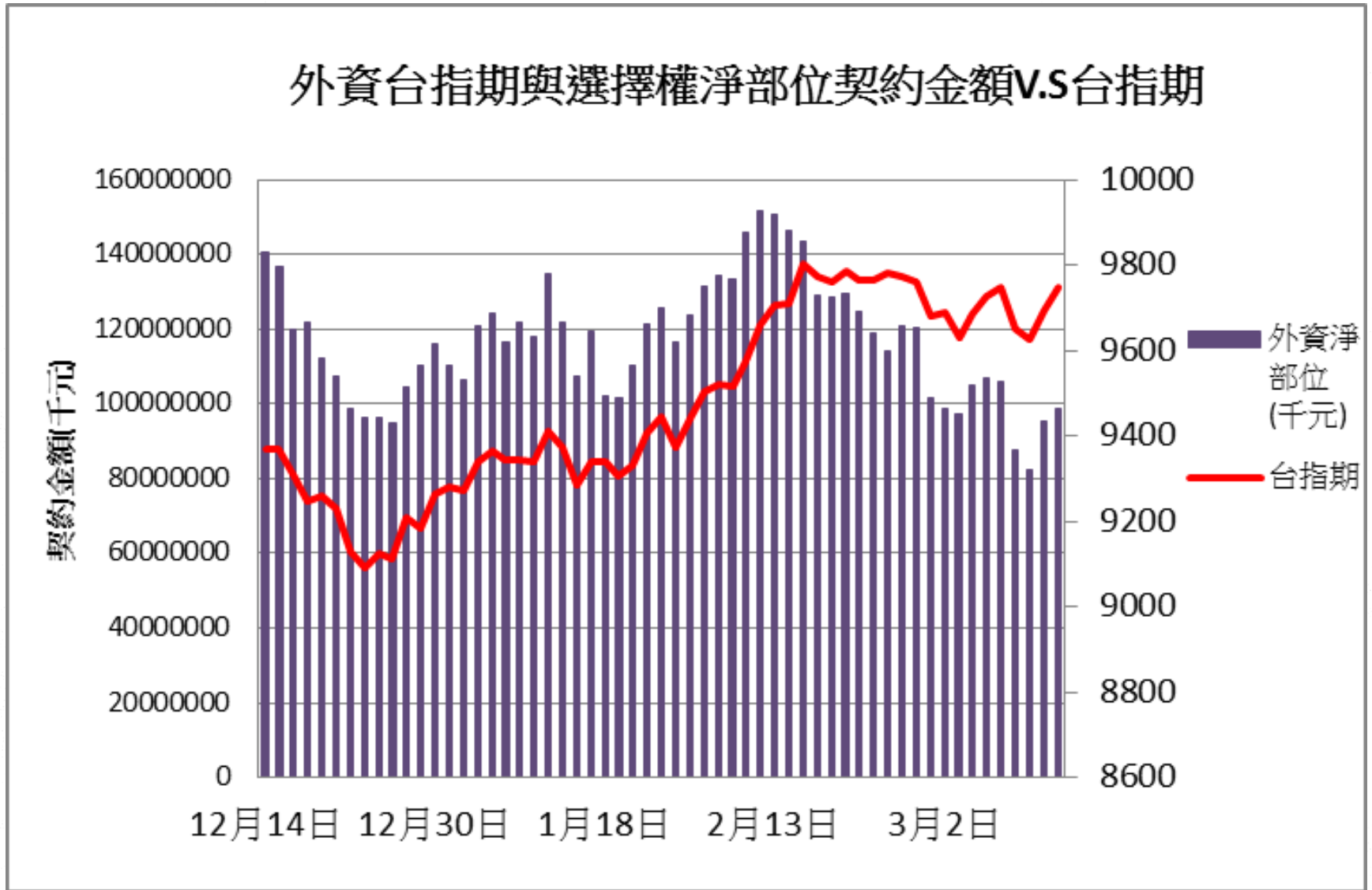




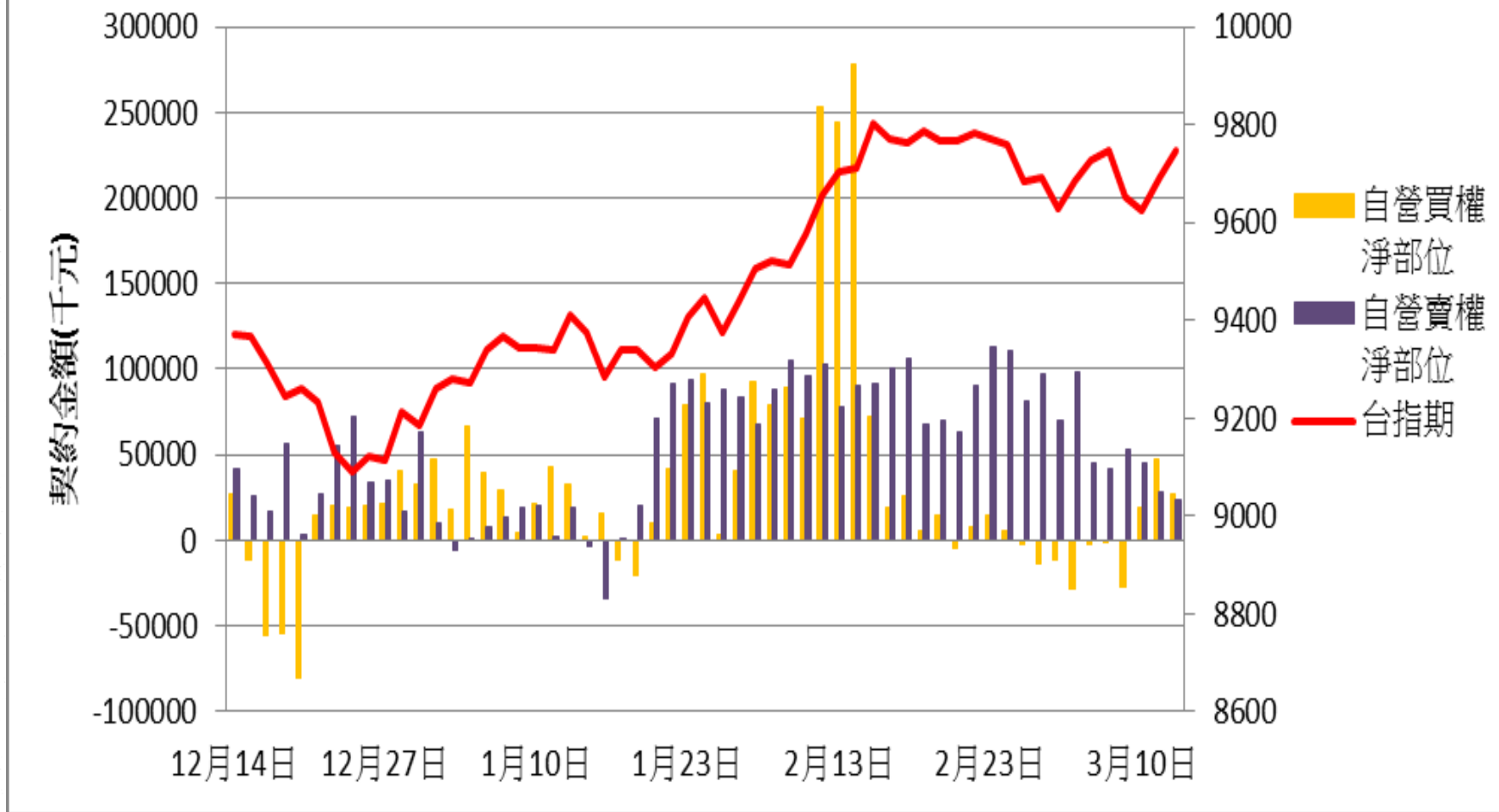
自營台指期與選擇權淨部位契約金額V.S台指期



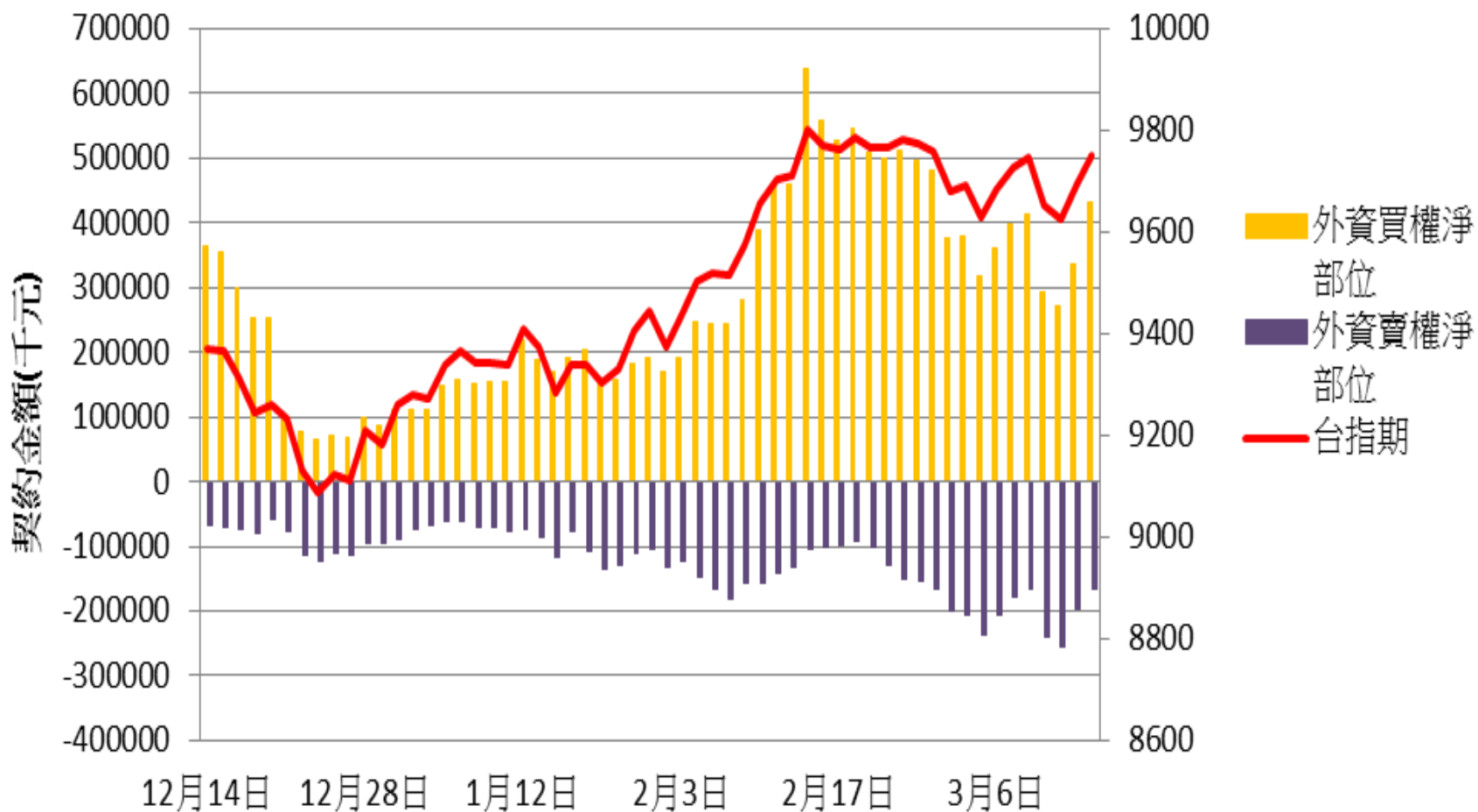
外資台指期與選擇權淨部位契約金額V.S台指期



自營買賣權淨部位契約金額V.S台指期

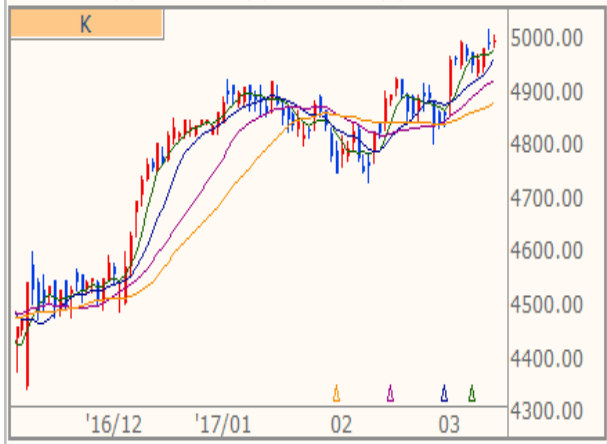


外資買賣權淨部位契約金額V.S台指期



技術分析

CAC 法國巴黎(日) 4999.600 +6.280 +0.13%
18:00:00 開 4997.880 高 5013.080 低 4986.060



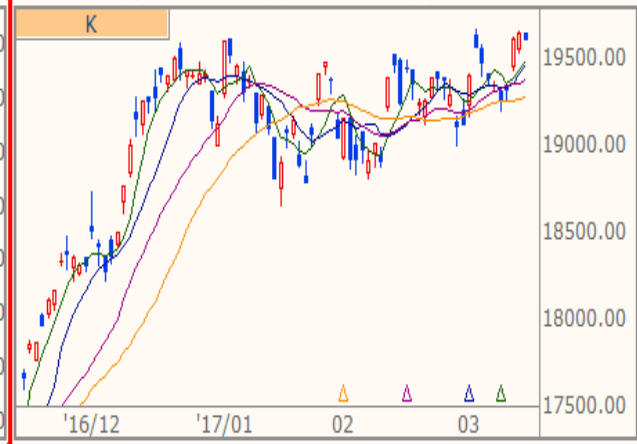
技術分析

DAX 法蘭克福(日) 11990.030 +26.850 +0.22%
17:45:00 開 11954.800 高 12006.010 低 11949.030



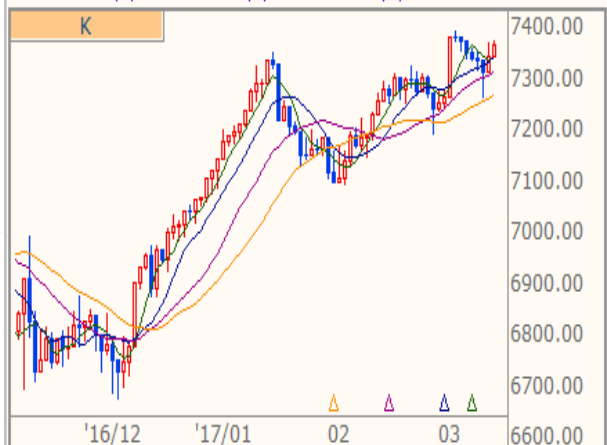
技術分析

NKI 日經指數(日) ↓ 19609.500 -24.250 -0.12%
15:00:01 開 19634.290 高 19637.550 低 19599.620



技術分析

FTH 時報金融(日) ↓ 7367.080 +24.000 +0.33%
16:35:29 開 7343.080 高 7377.410 低 7342.020



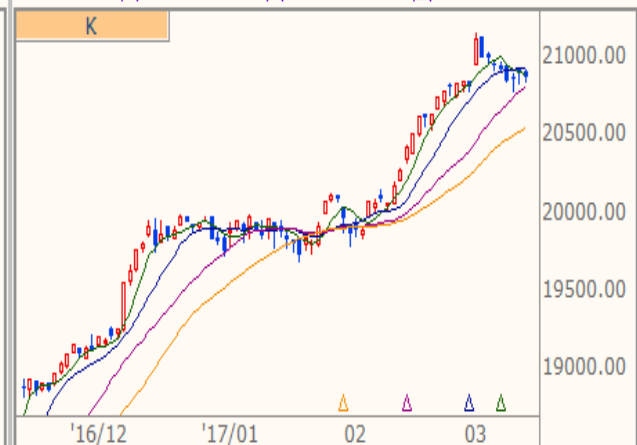
技術分析

NAS NASDAQ(日) ↑ 5875.780 +14.050 +0.24%
16:00:00 開 5863.480 高 5877.430 低 5860.830



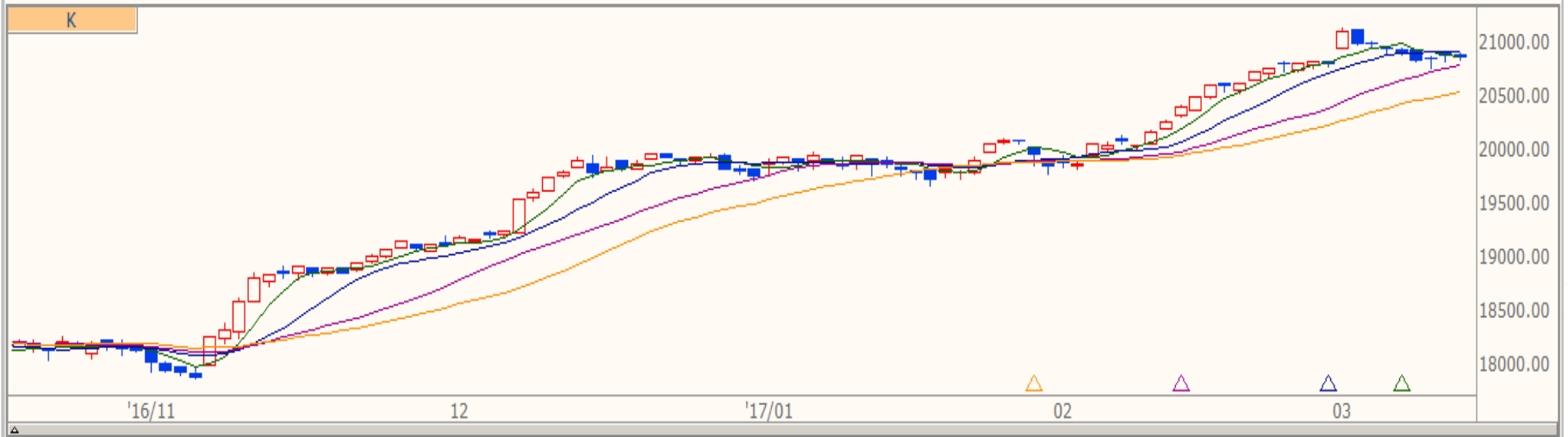
技術分析

DJI 道瓊指數(日) 20881.480 -21.500 -0.10%
16:39:14 開 20899.280 高 20926.060 低 20845.710



技術分析

DJI 道瓊指數(日) 20881.480 -21.500 -0.10% 16:39:14 開 20899.280 高 20926.060 低 20845.710



技術分析

TWI 加權指數(日) 9744.210 +46.870 +0.48% 13:31:00 開 9720.530 高 9767.660 低 9720.530



