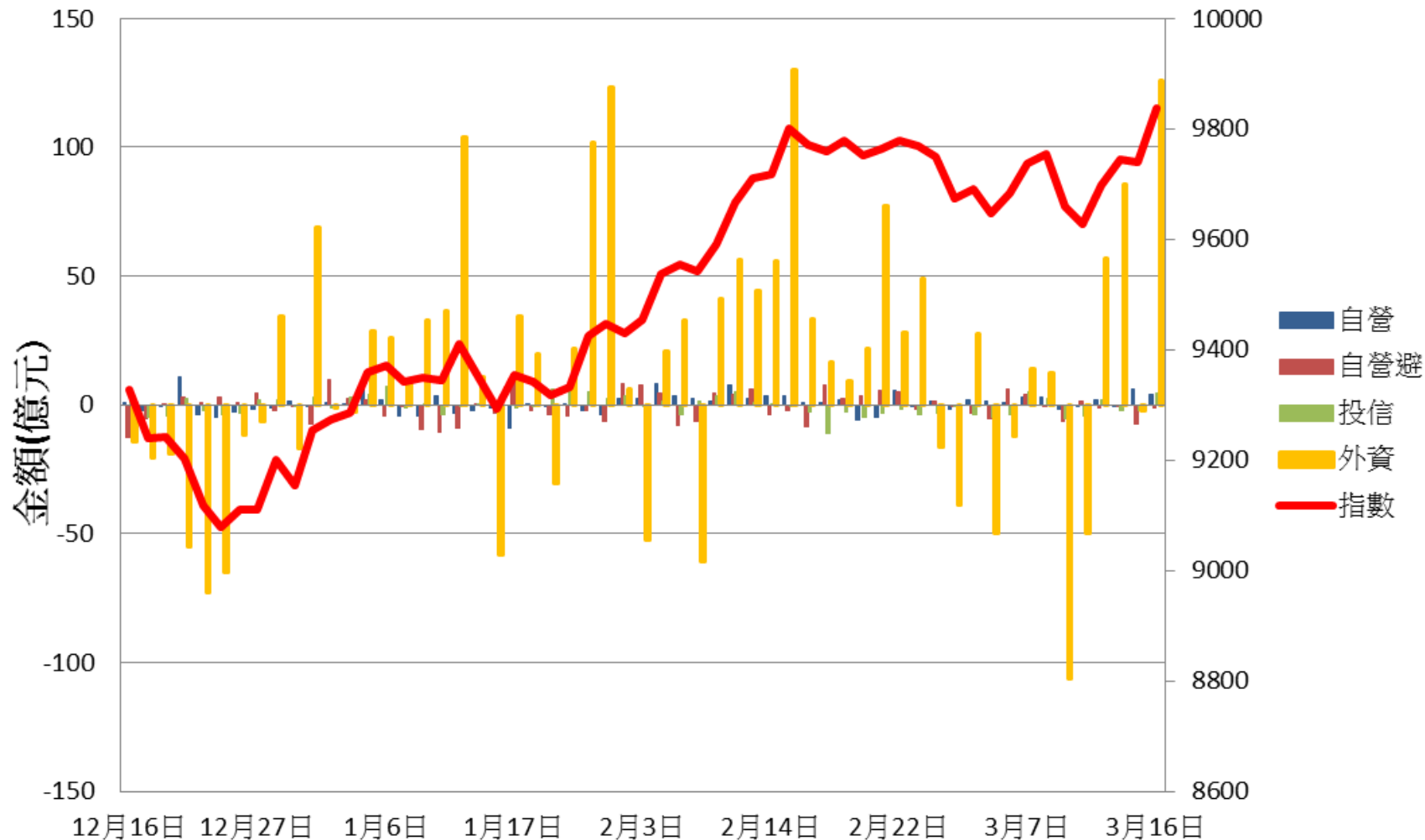
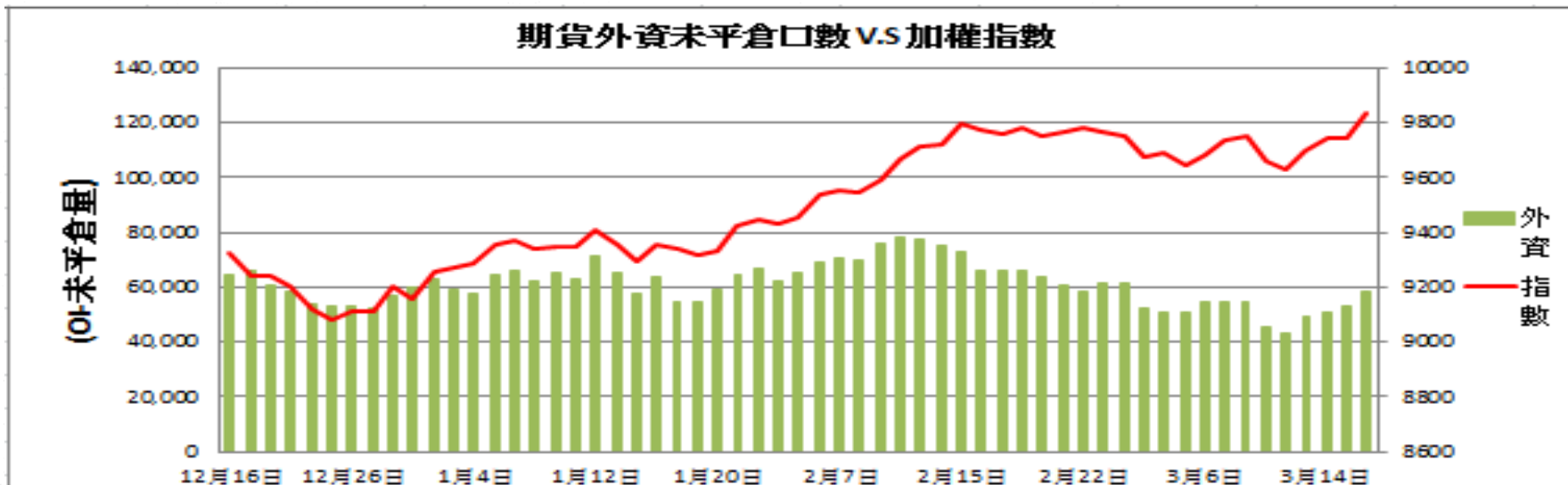


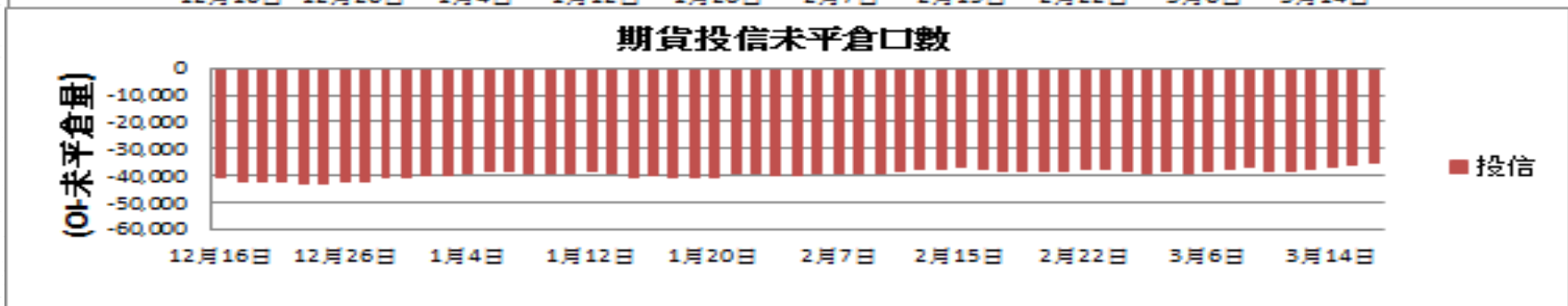
證券三大法人每日買賣超 v.s 加權指數



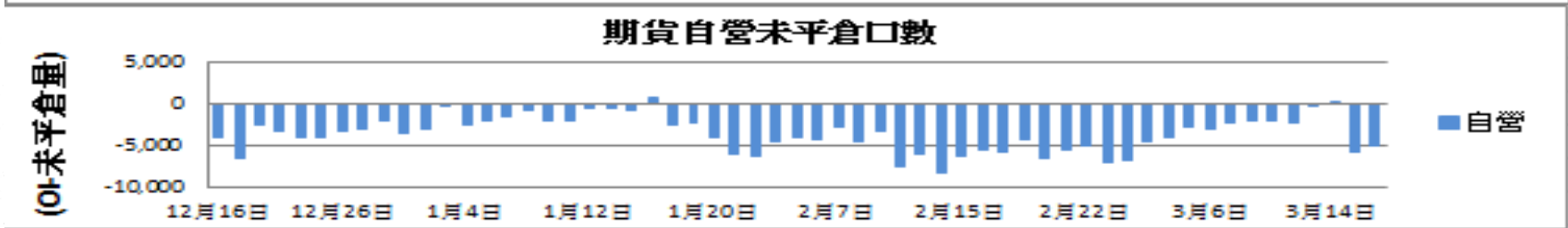
期貨外資未平倉口數 v.s 加權指數



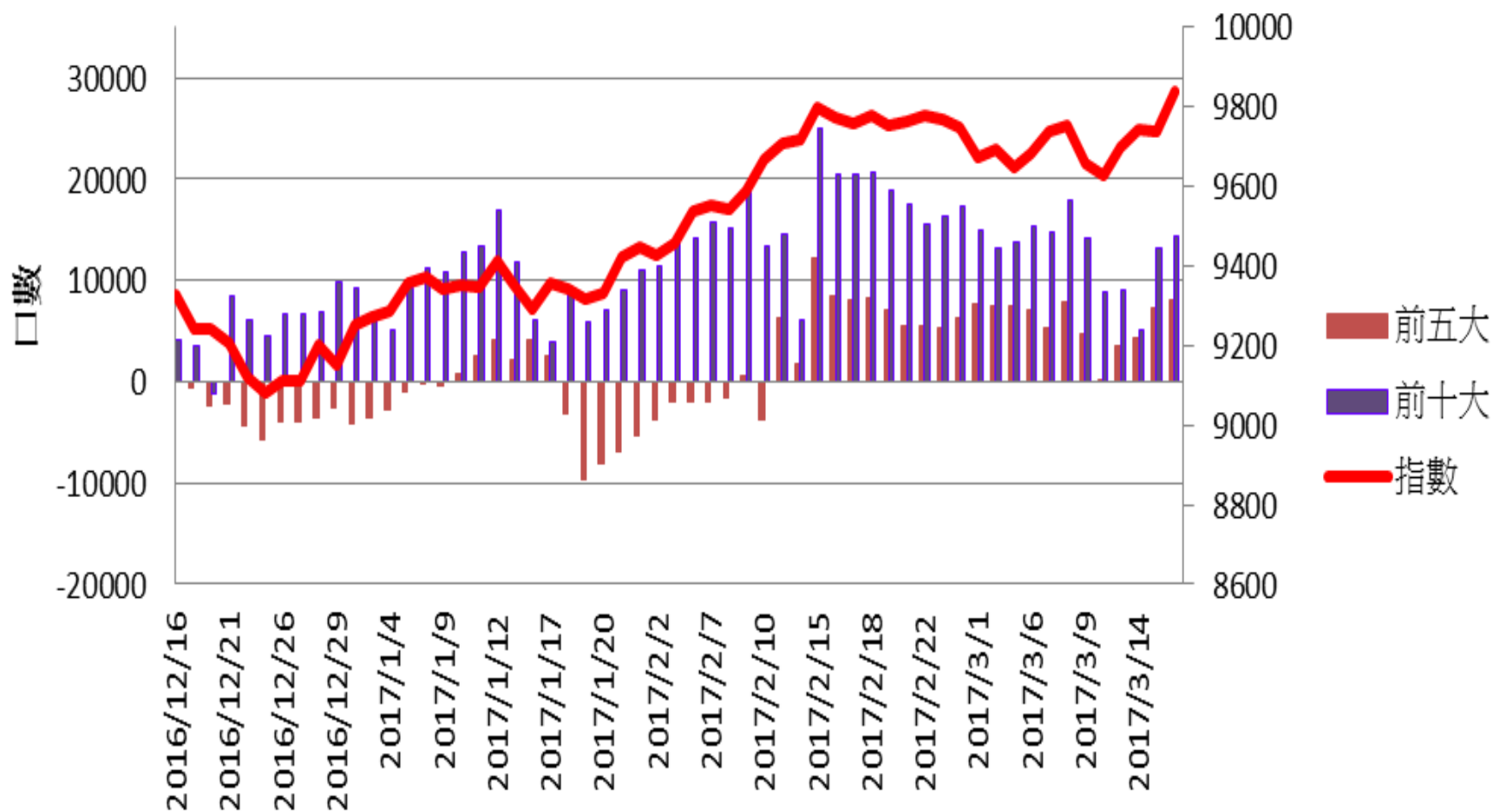
期貨投信未平倉口數



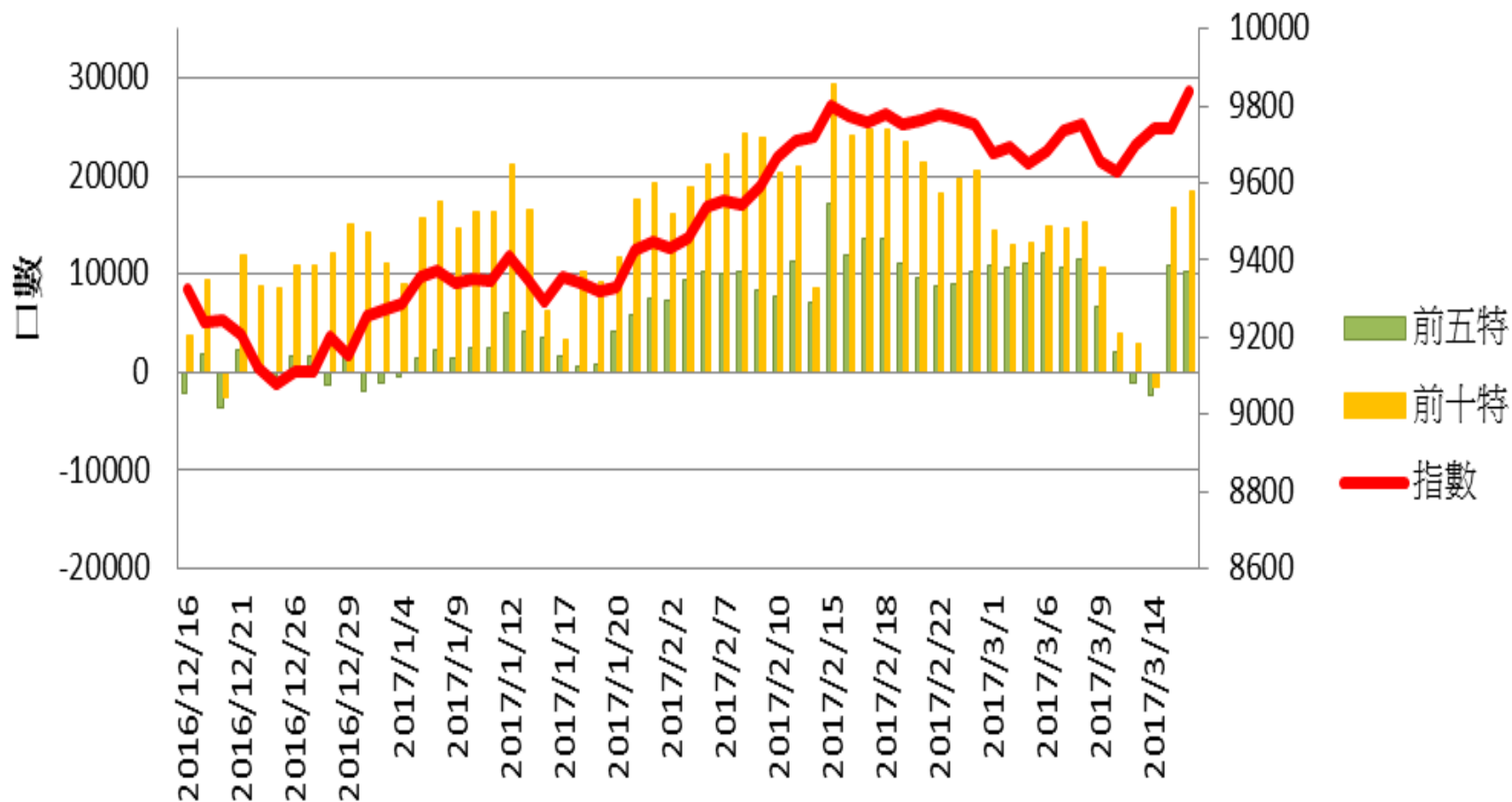
期貨自營未平倉口數



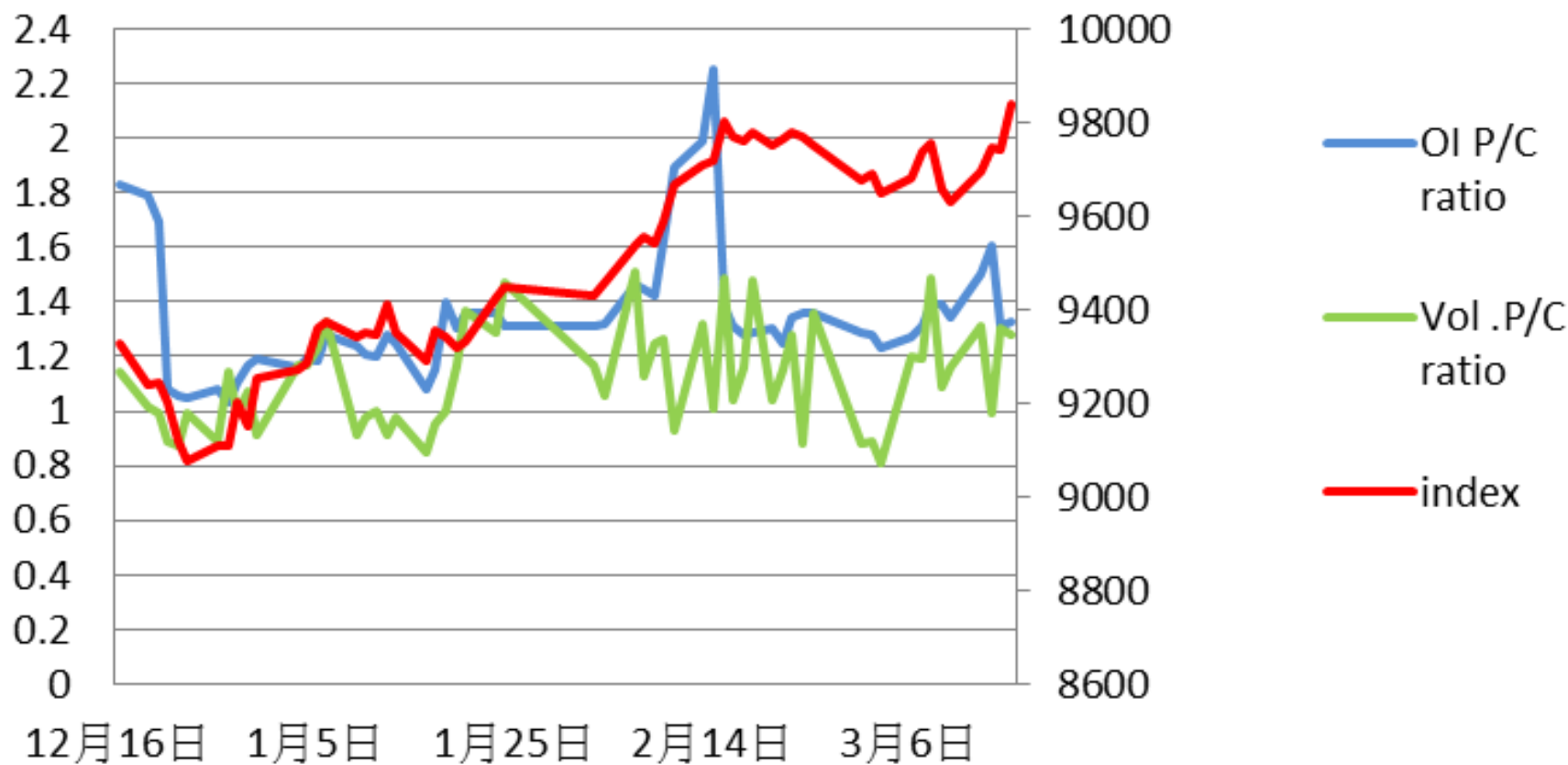
加權指數V.S期貨大額法人未平倉口數



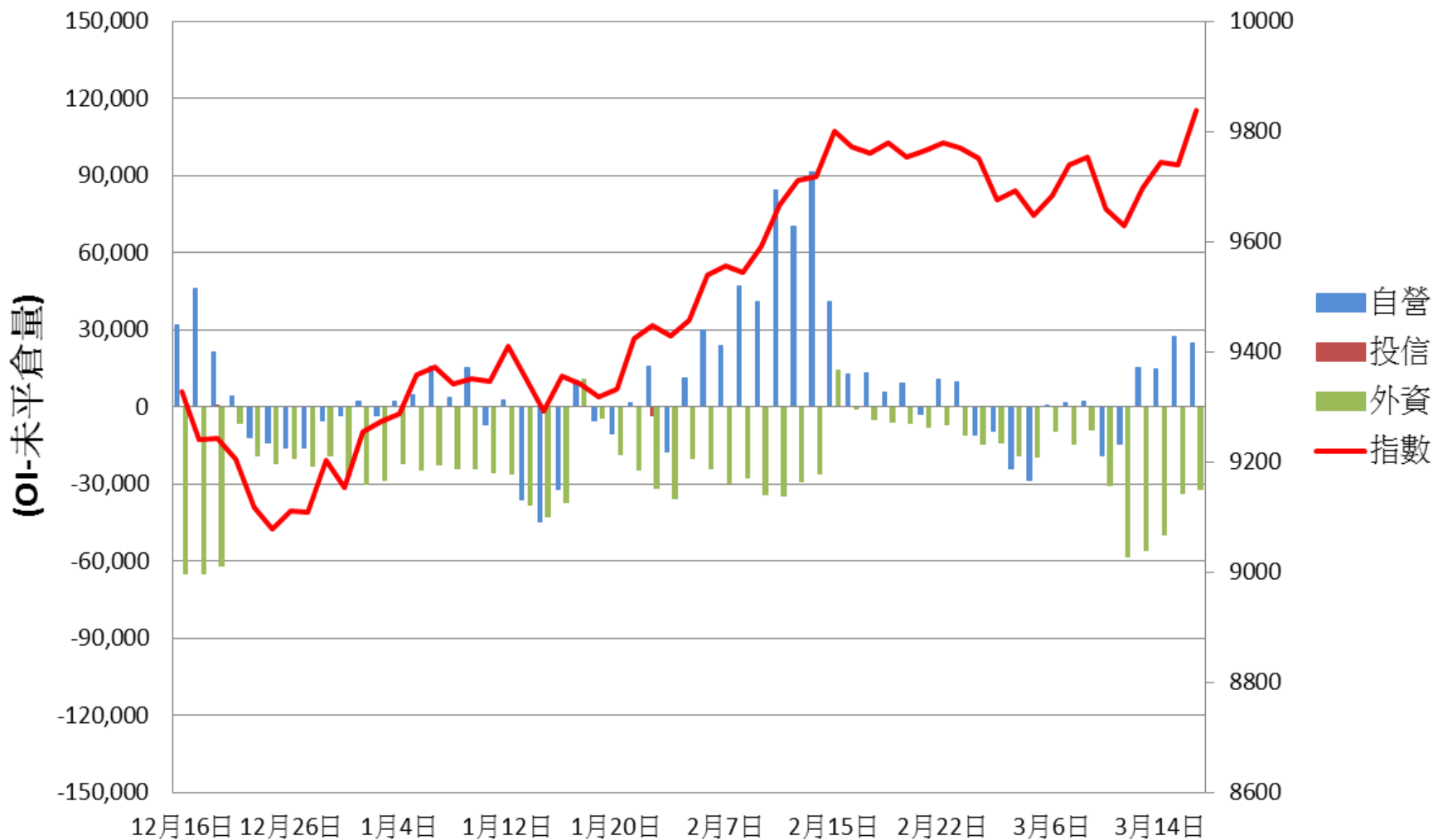
加權指數V.S期貨特定法人未平倉口數



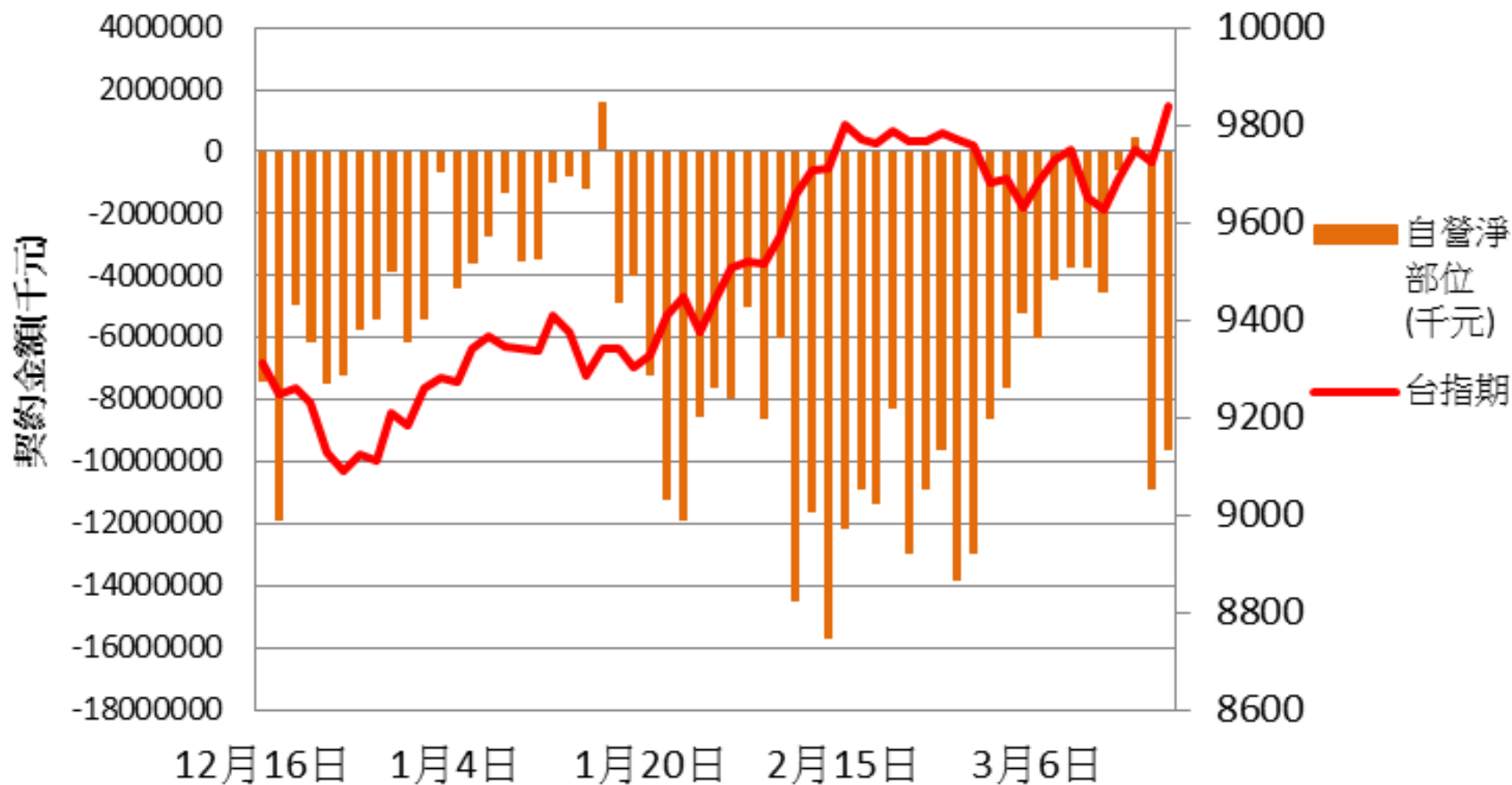
加權指數V.S未平倉量P/Cratio V.S 成交量P/C ratio



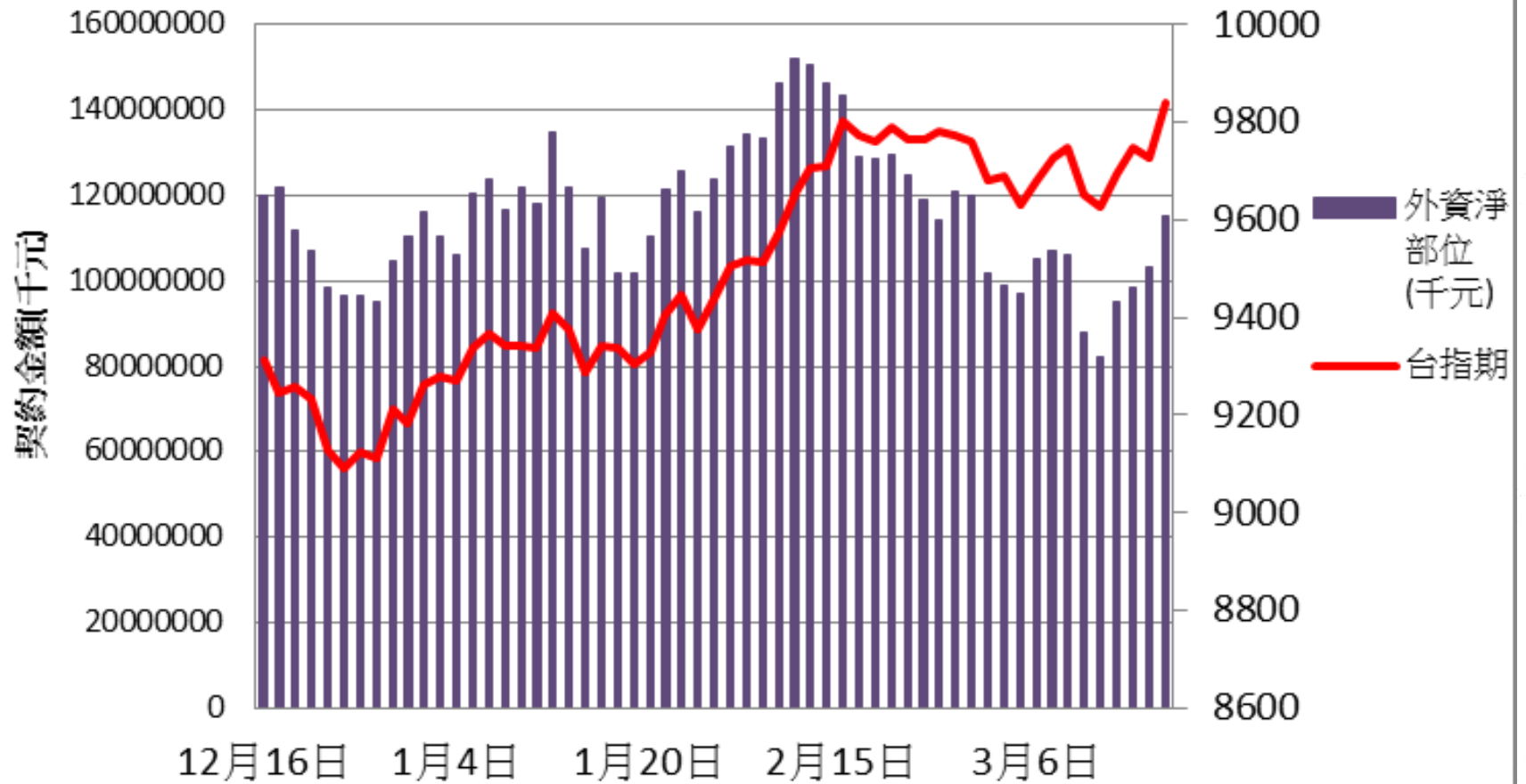
選擇權三大法人未平倉口數 v.s 加權指數



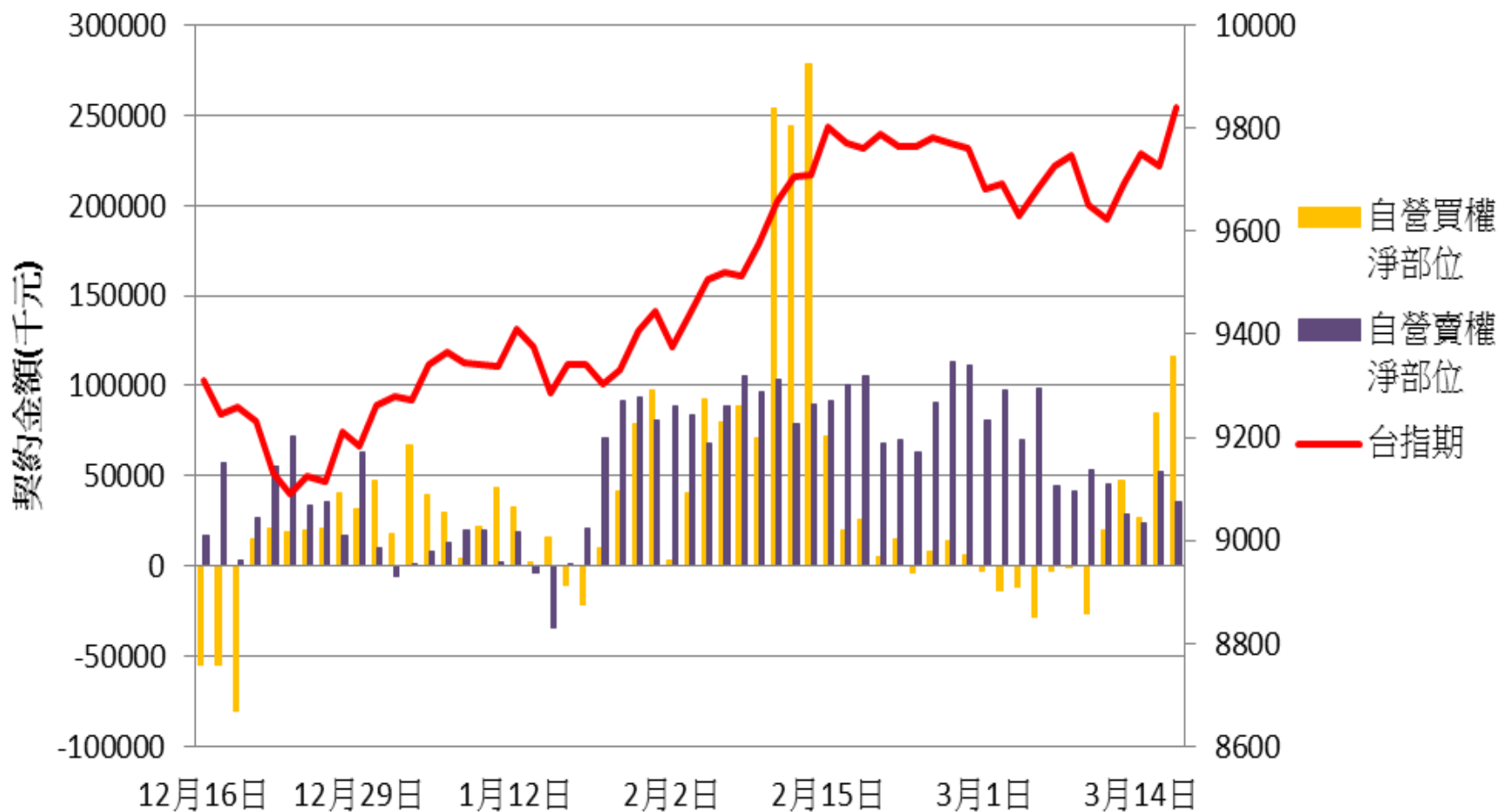
自營台指期與選擇權淨部位契約金額V.S台指期



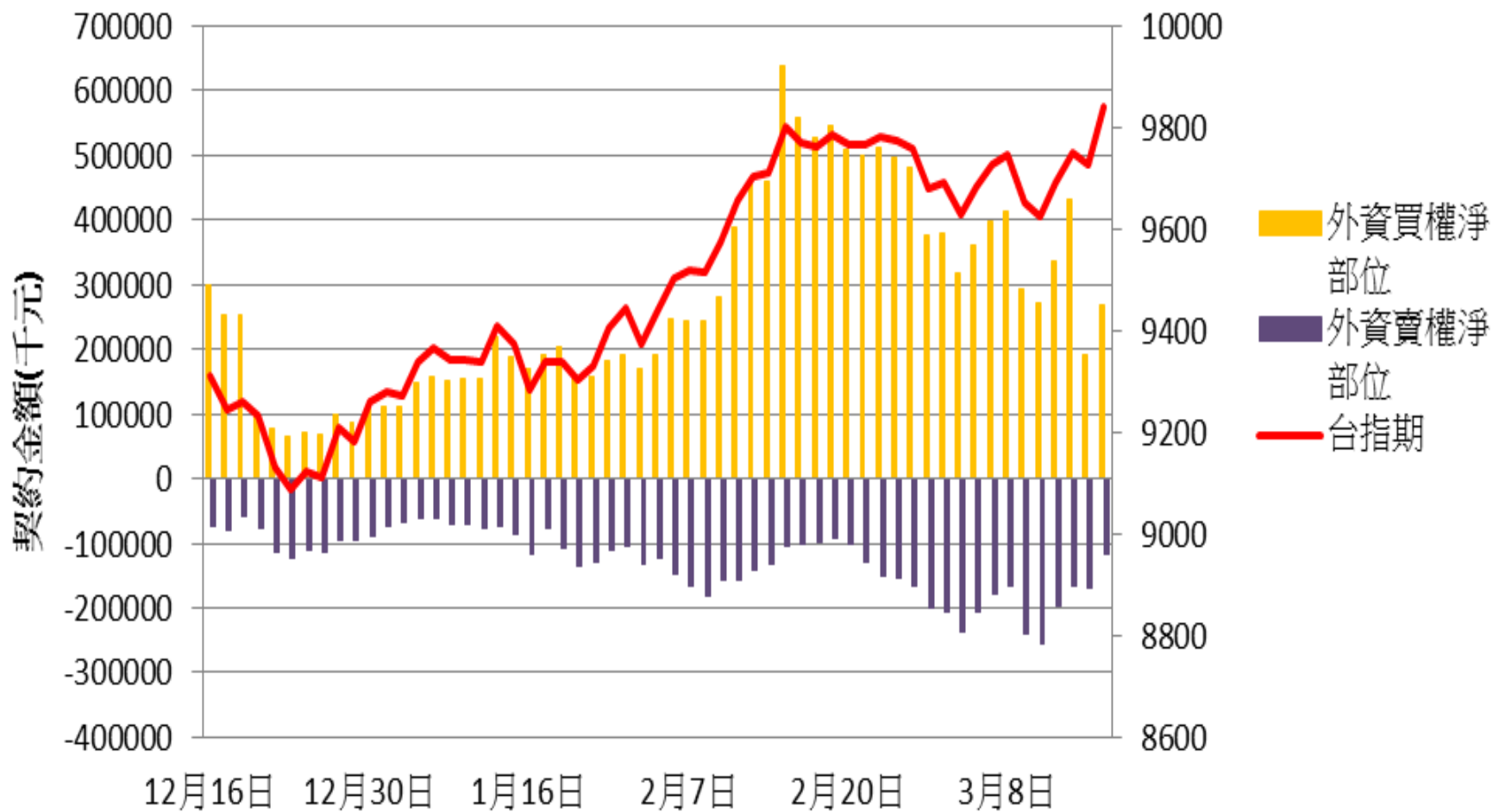
外資台指期與選擇權淨部位契約金額V.S台指期



自營買賣權淨部位契約金額V.S台指期



外資買賣權淨部位契約金額V.S台指期



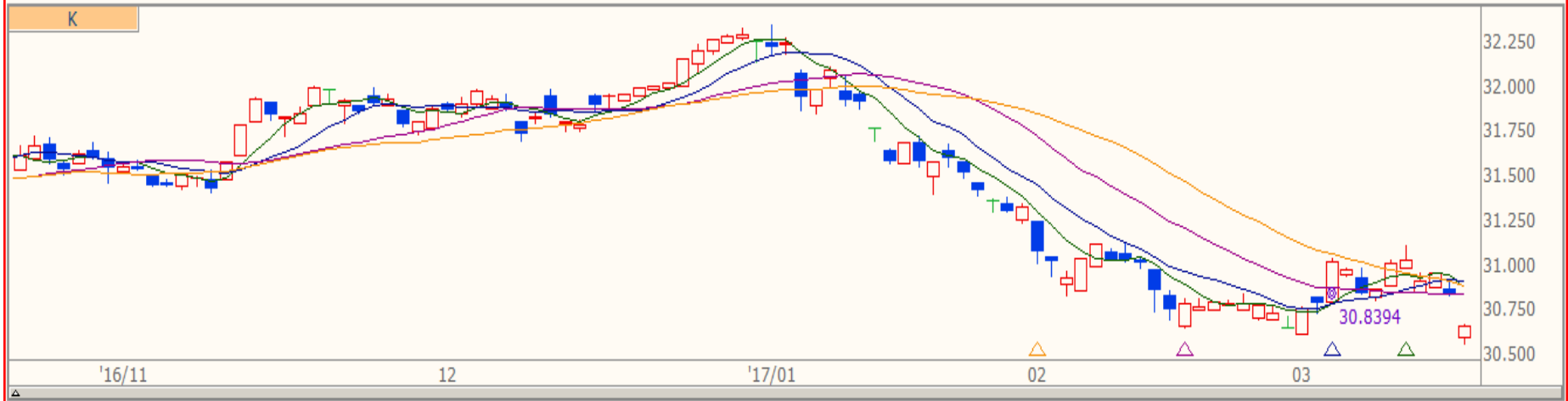




技術分析



TWD 台幣(日) 買 30.665 賣 30.700 -0.175 -0.5674% 07:31:00



技術分析



TWI 加權指數(日) 9837.830 +97.520 +1.00% 13:31:00 開 9768.850 高 9842.170 低 9768.850

