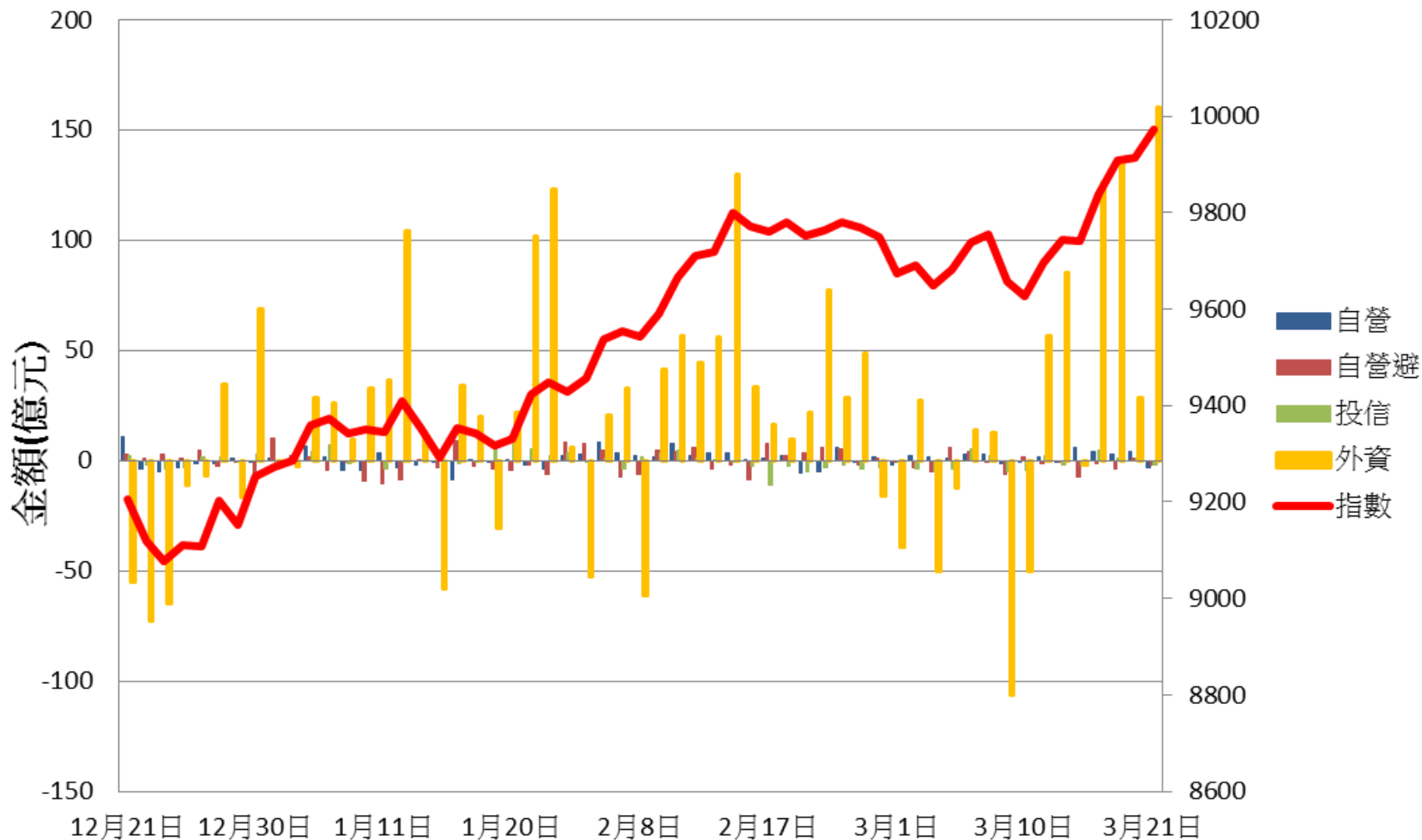
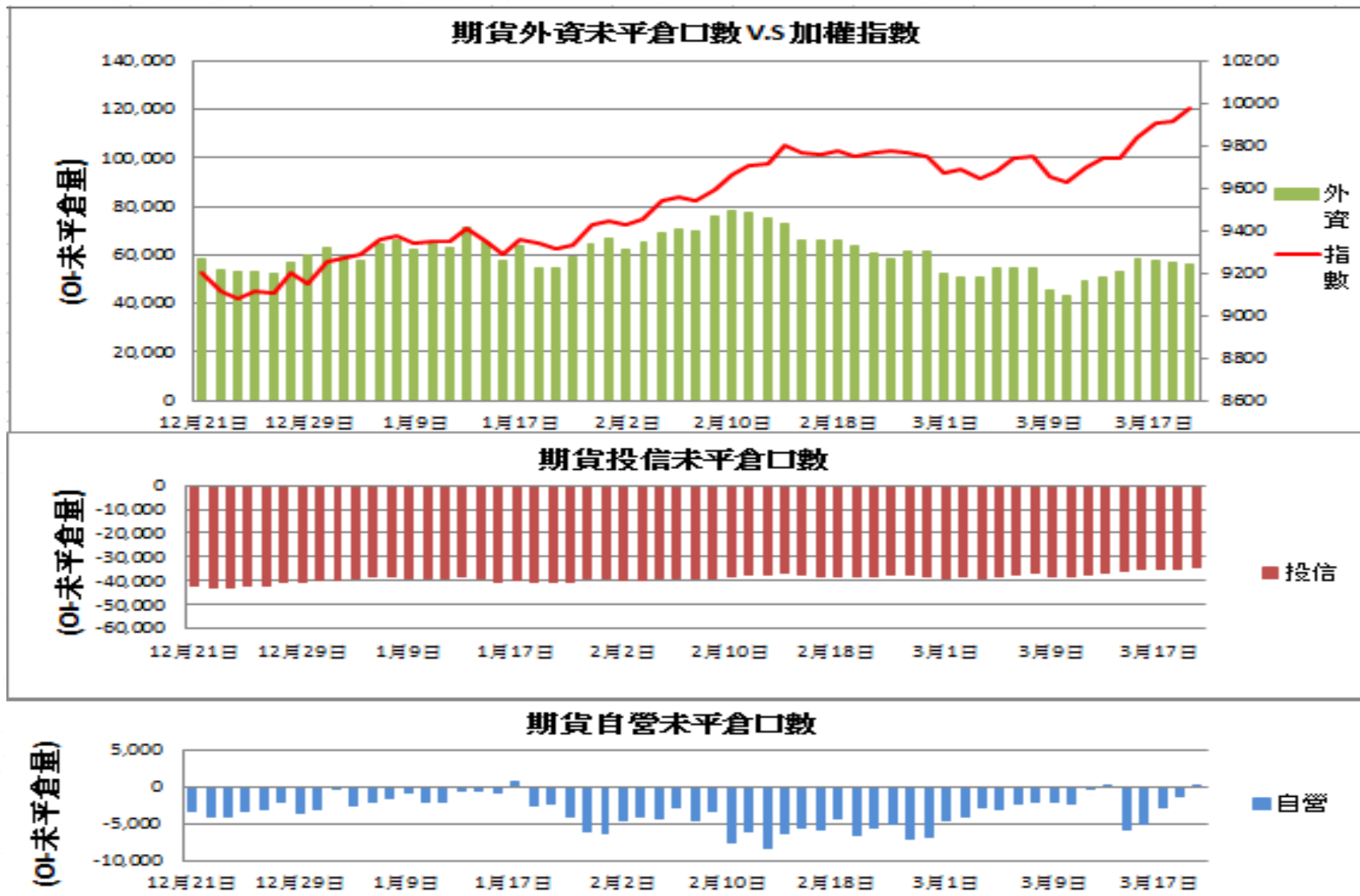
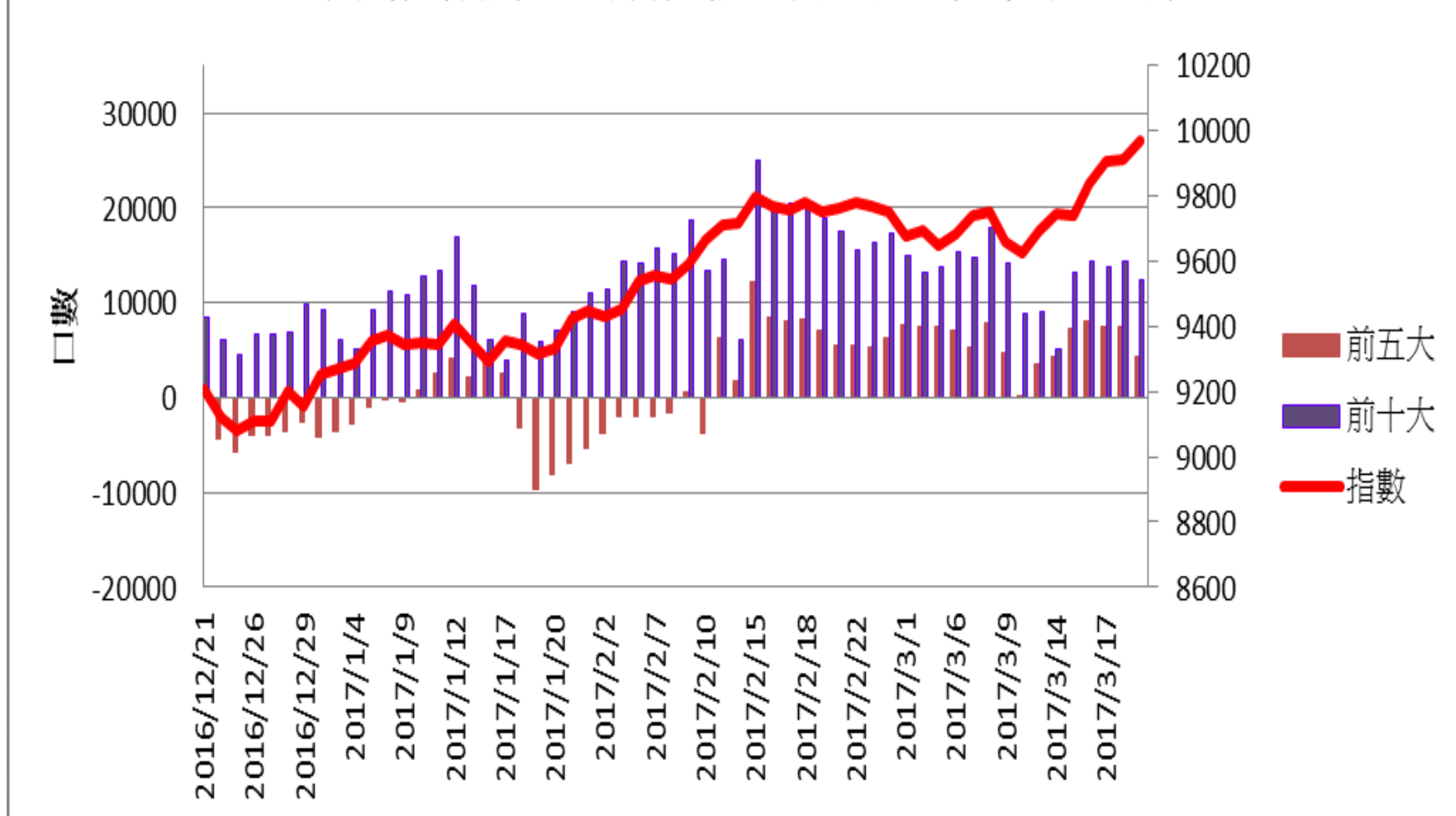


證券三大法人每日買賣超 V.S 加權指數

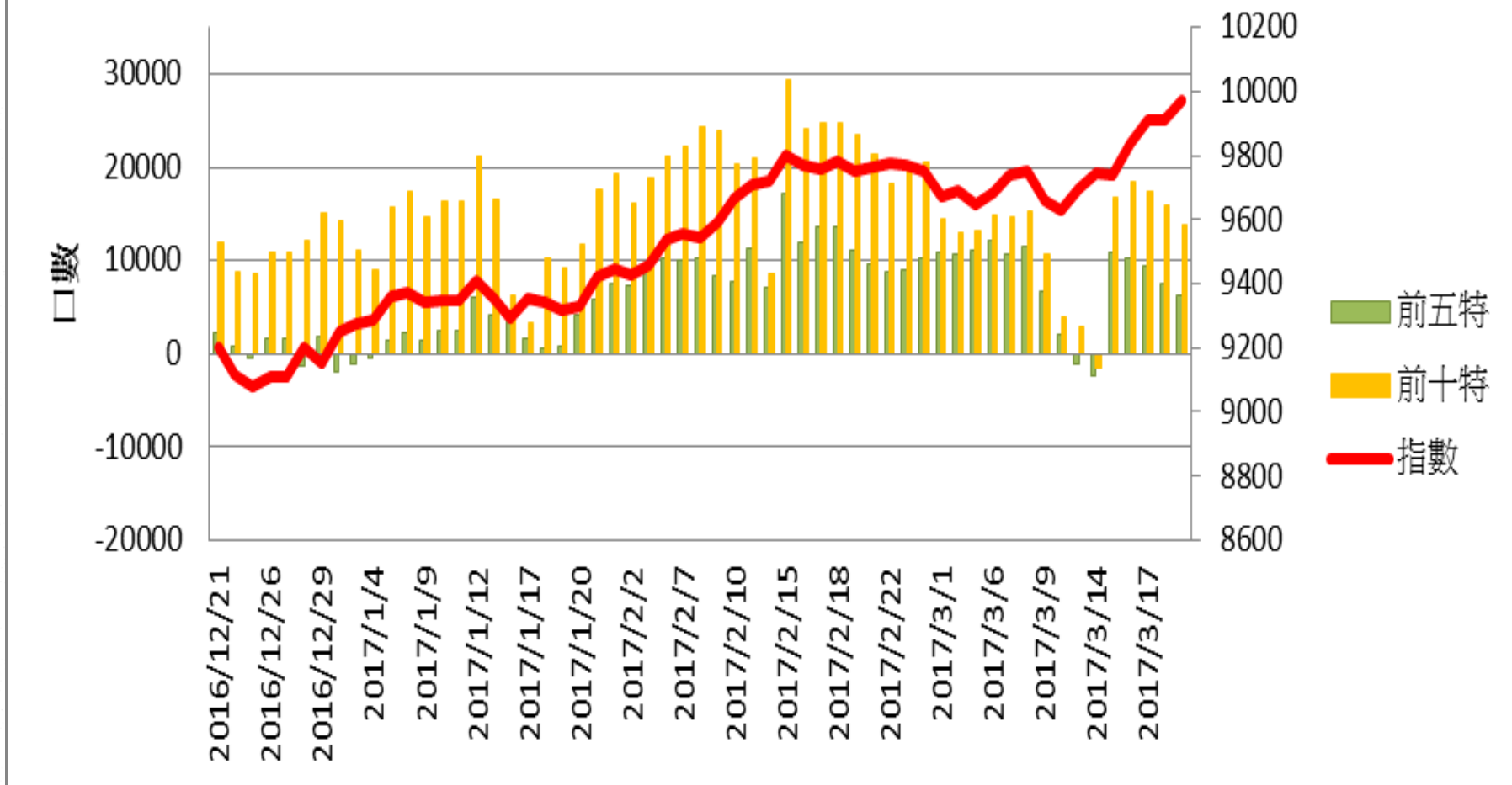




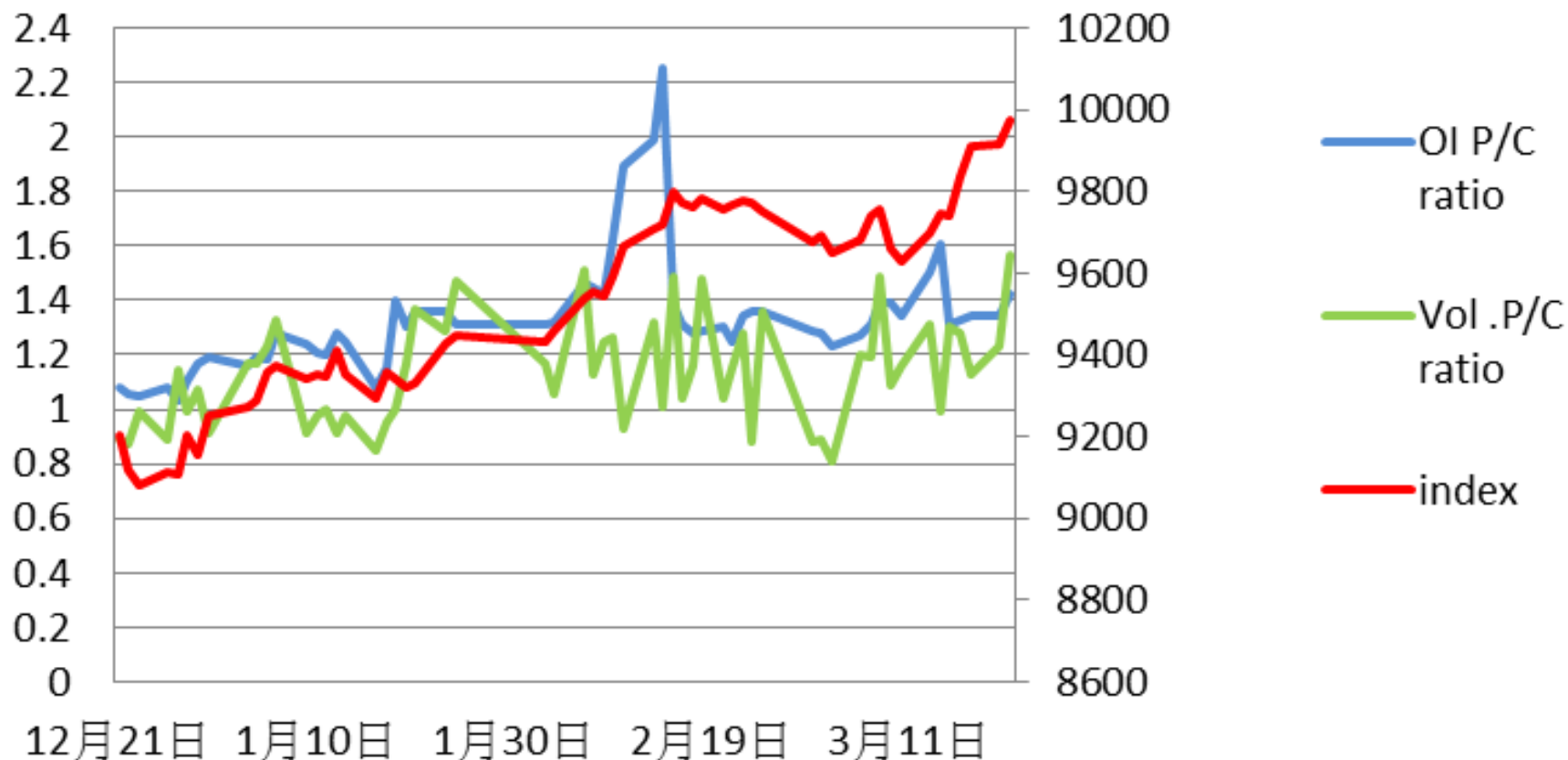
## 加權指數V.S期貨大額法人未平倉口數



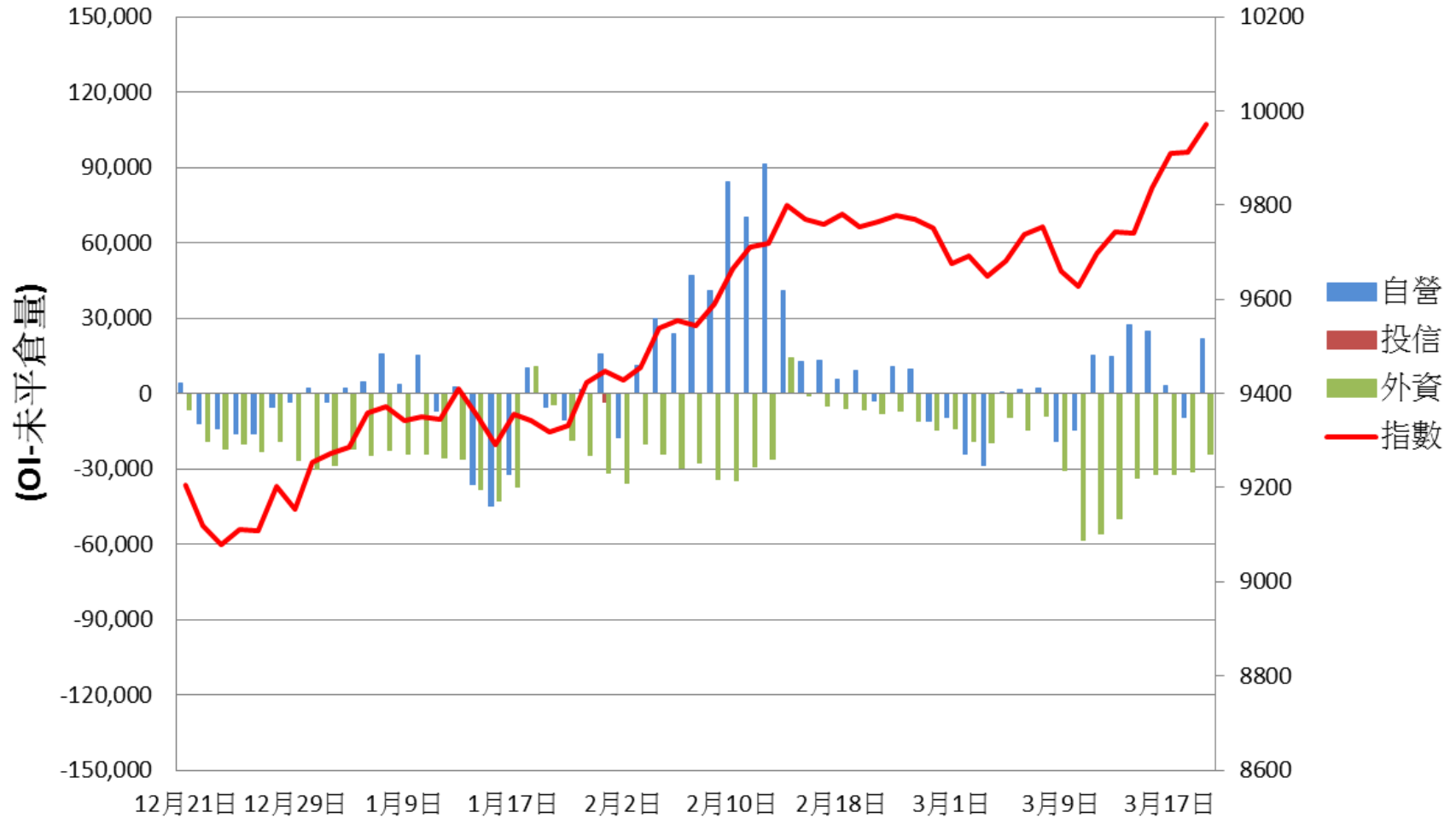
## 加權指數V.S期貨特定法人未平倉口數



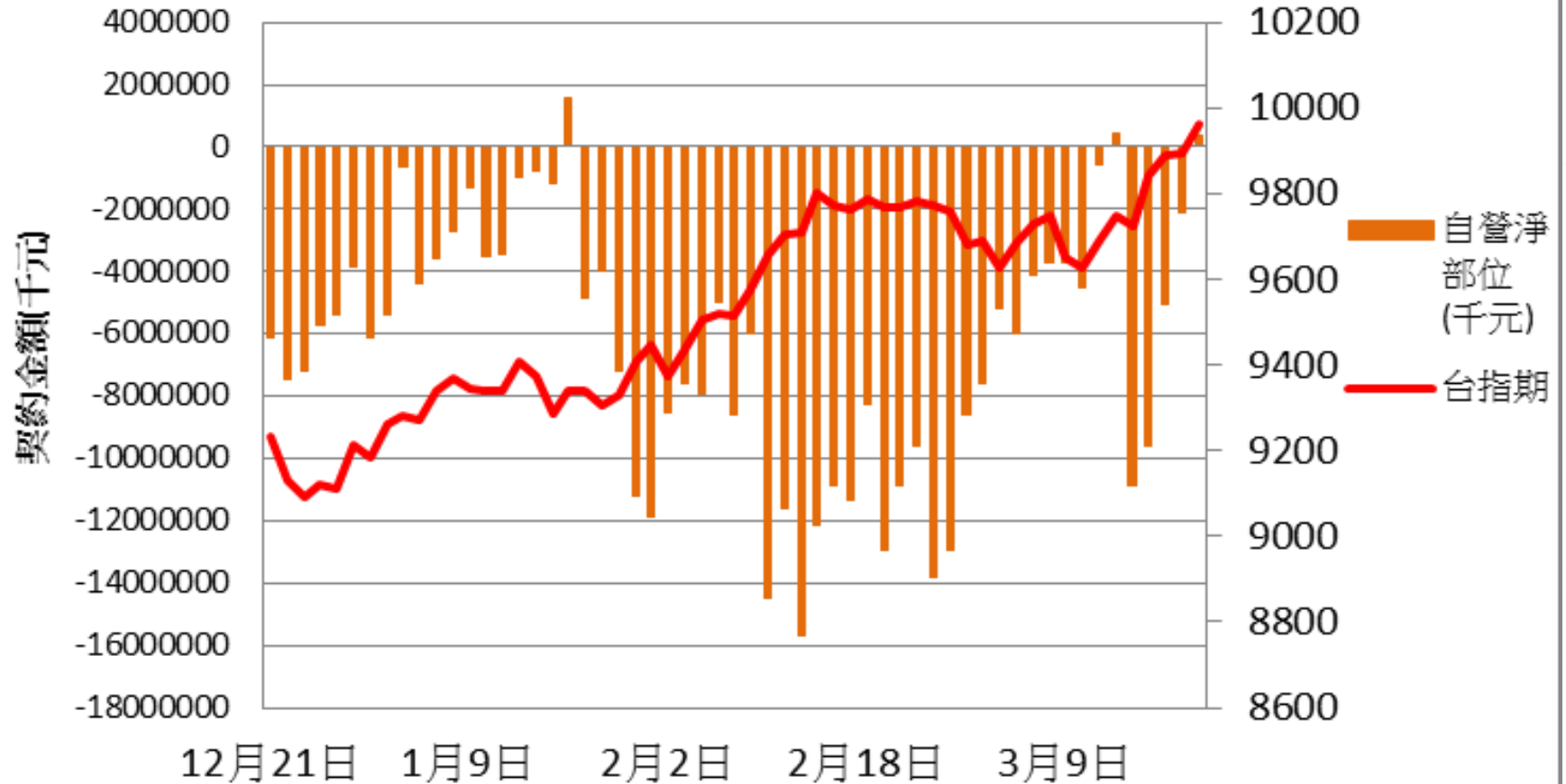
## 加權指數V.S未平倉量P/Cratio V.S 成交量P/C ratio



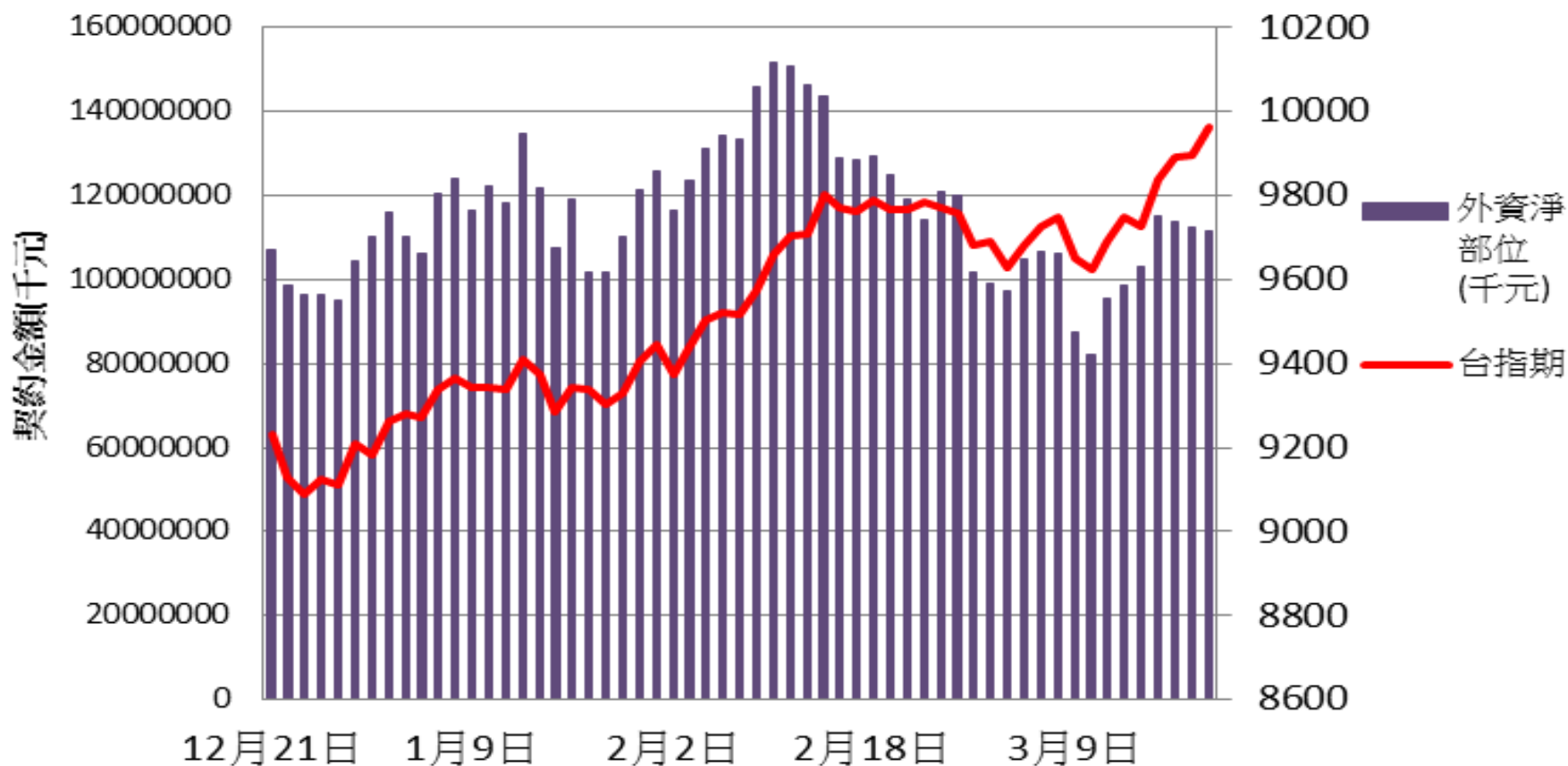
選擇權三大法人未平倉口數 v.s 加權指數



### 自營台指期與選擇權淨部位契約金額V.S台指期

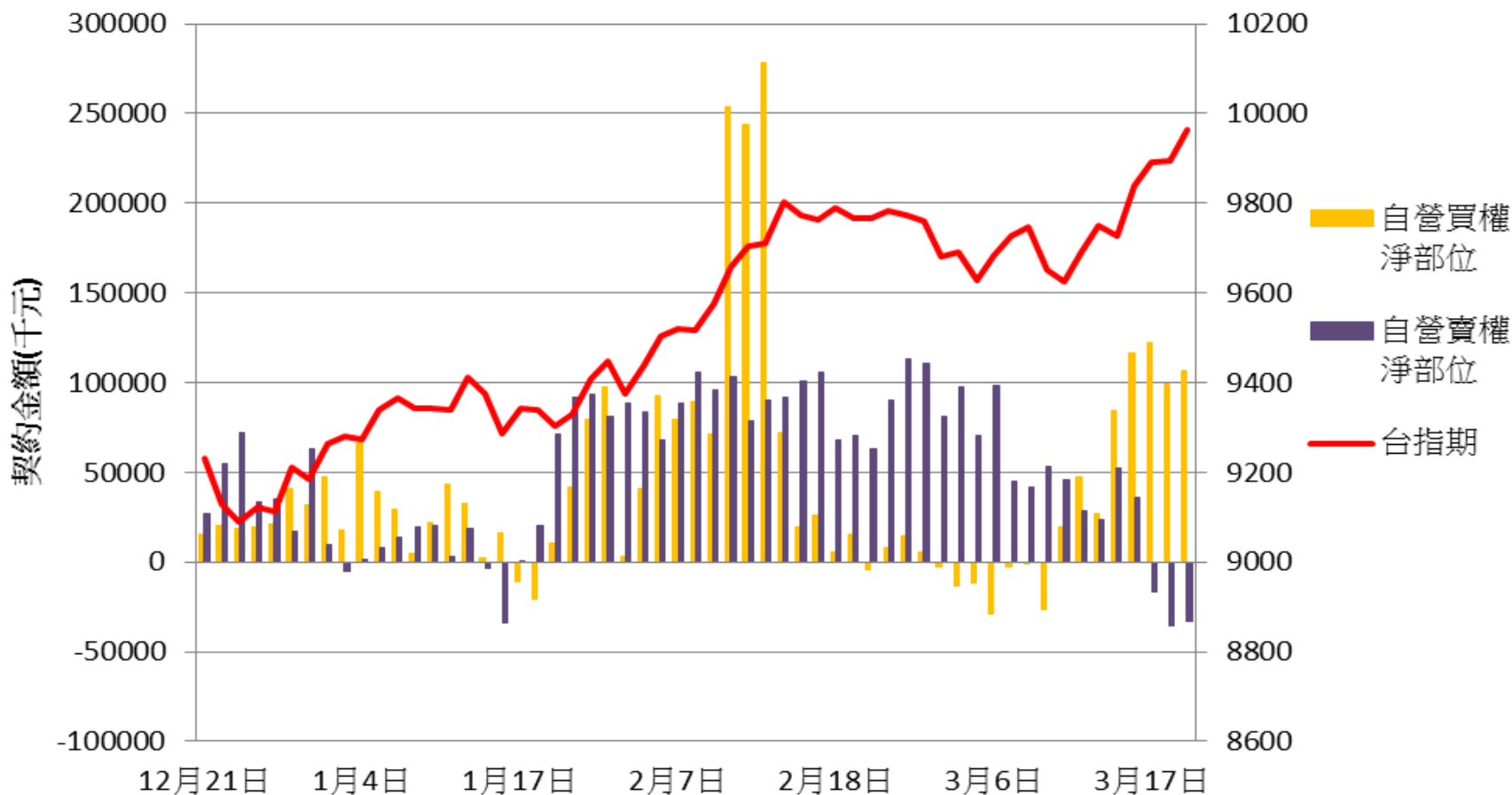


### 外資台指期與選擇權淨部位契約金額V.S台指期

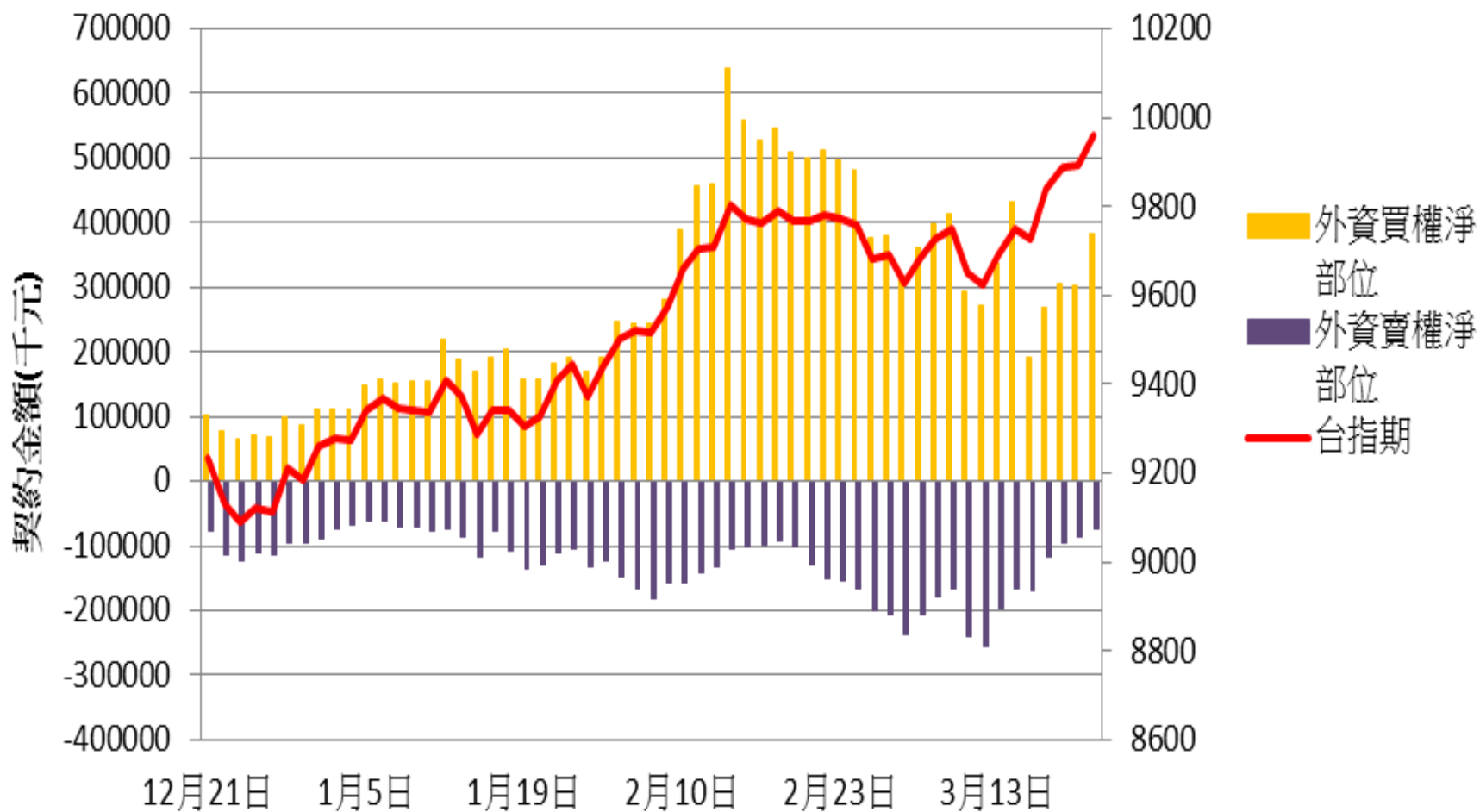




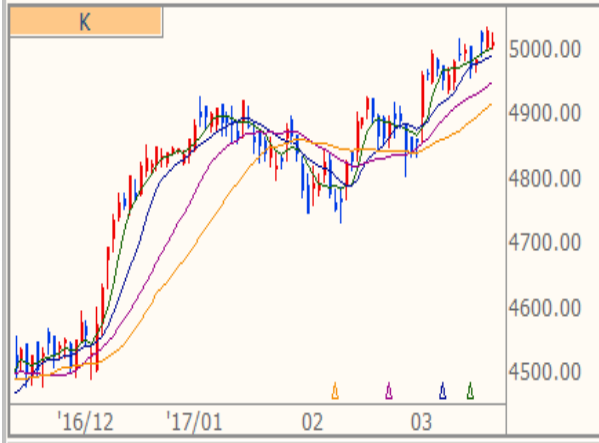
自營買賣權淨部位契約金額V.S台指期



外資買賣權淨部位契約金額V.S台指期



技術分析  
CAC 法國巴黎(日) 5012.160 -17.080 -0.34%  
18:00:00 開 5008.080 高 5030.060 低 5004.080



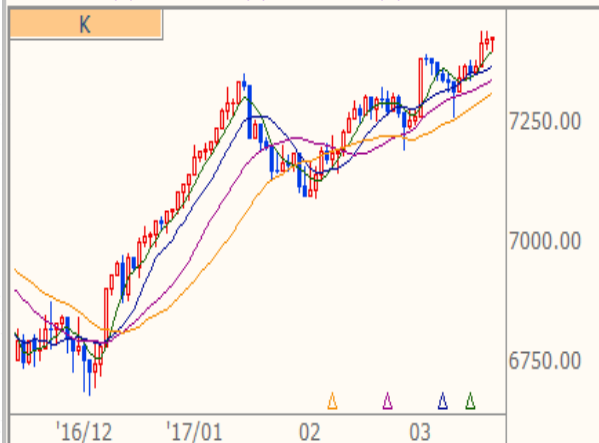
技術分析  
DAX 法蘭克福(日) 12052.900 -42.340 -0.35%  
17:45:00 開 12050.810 高 12082.310 低 12033.240



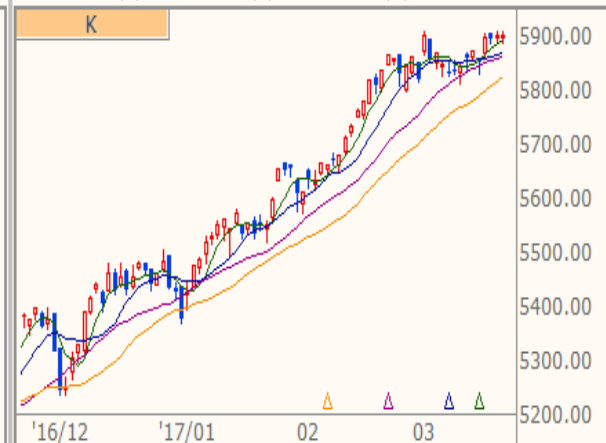
技術分析  
NKI 日經指數(日) ↓ 19455.880 -65.710 -0.34%  
15:00:01 開 19416.550 高 19485.140 低 19337.220



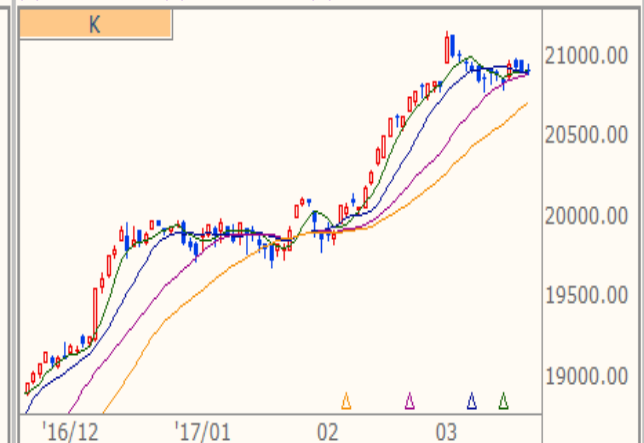
技術分析  
FTH 時報金融(日) ↑ 7429.810 +4.850 +0.07%  
16:35:29 開 7424.960 高 7433.680 低 7399.970



技術分析  
NAS NASDAQ(日) ↑ 5901.530 +0.530 +0.01%  
16:00:00 開 5898.810 高 5915.120 低 5888.120

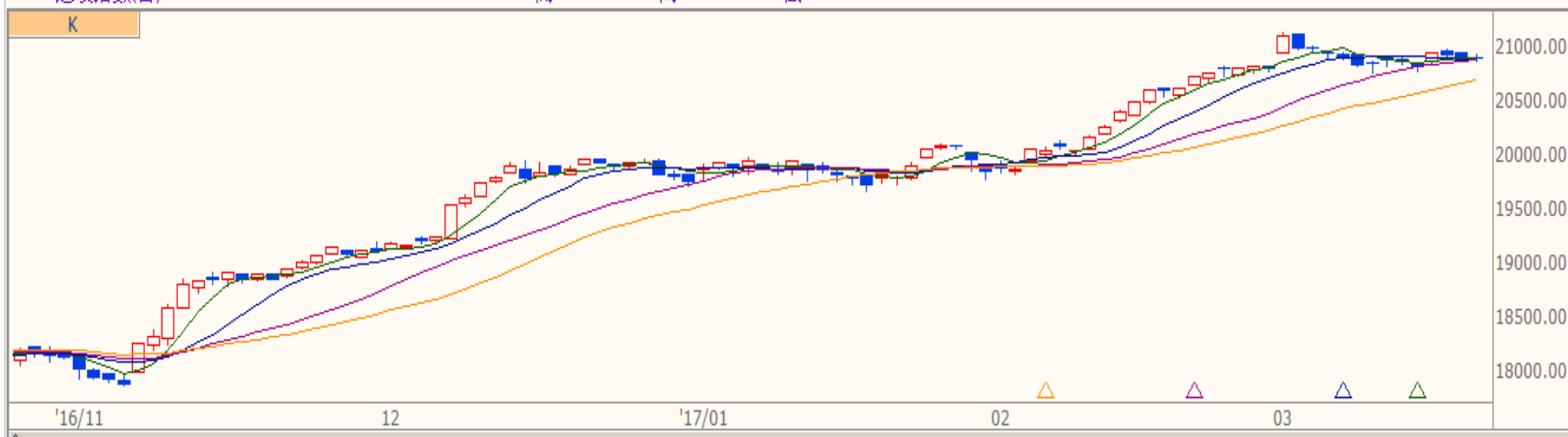


技術分析  
DJI 道瓊指數(日) 20905.860 -8.760 -0.04% 16:52:22  
開 20916.270 高 20955.450 低 20885.700



技術分析

DJI 道瓊指數(日) 20905.860 -8.760 -0.04% 16:52:22 開 20916.270 高 20955.450 低 20885.700



技術分析

TWI 加權指數(日) 9972.490 +59.520 +0.60% 13:31:00 開 9923.180 高 9976.610 低 9918.390



