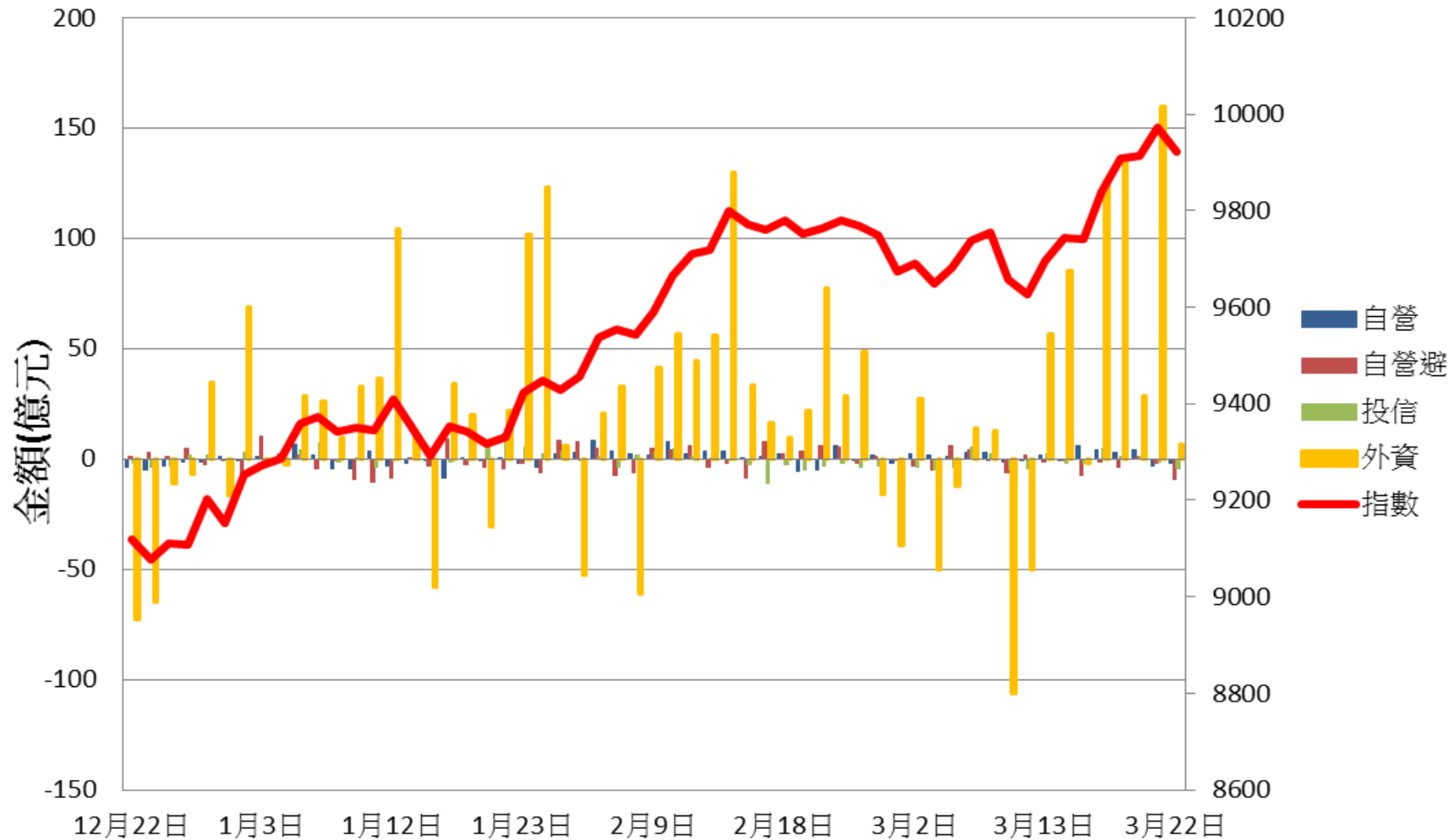
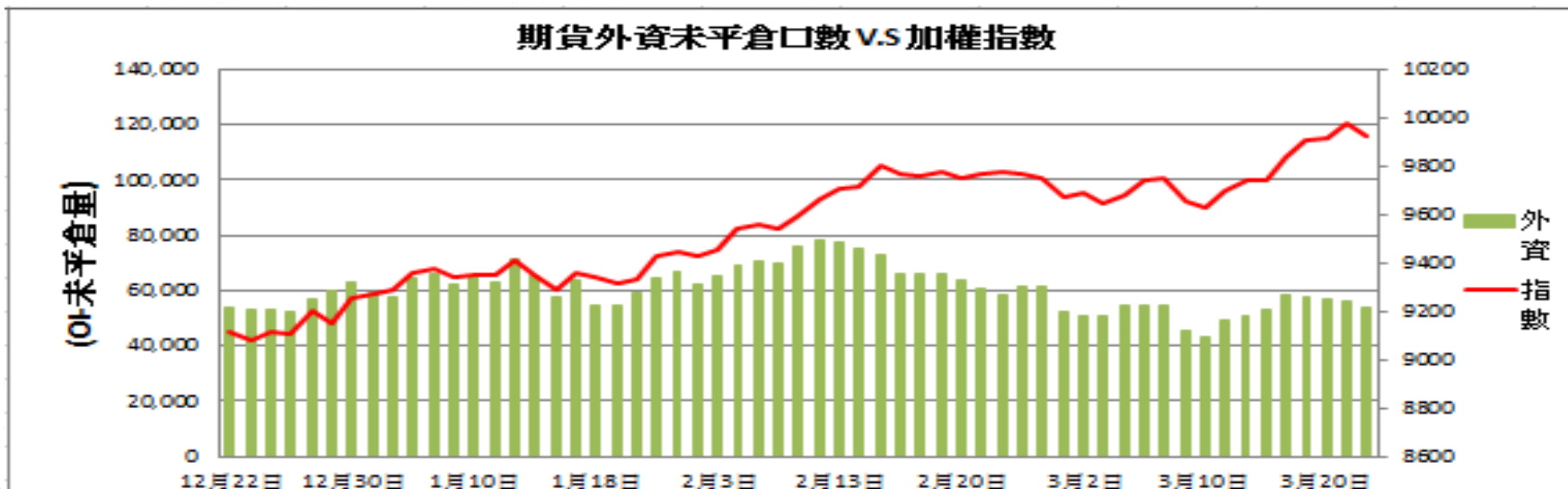


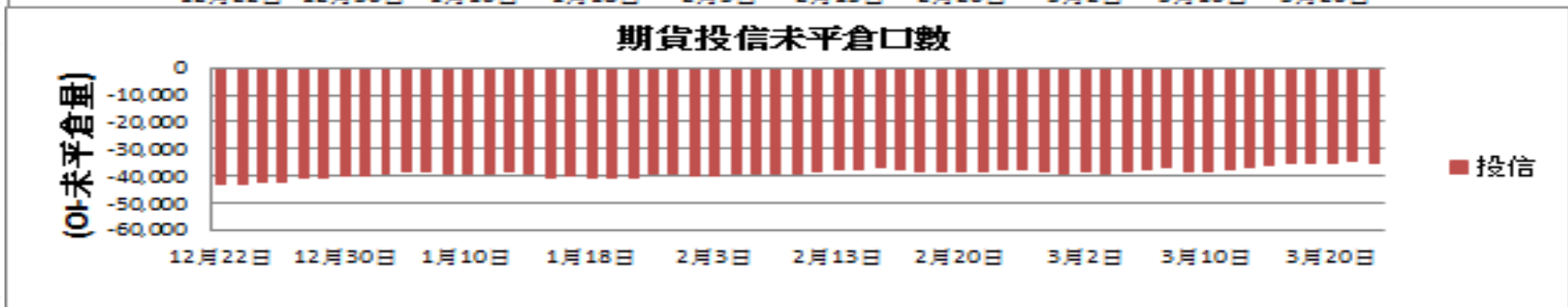
證券三大法人每日買賣超 V.S 加權指數



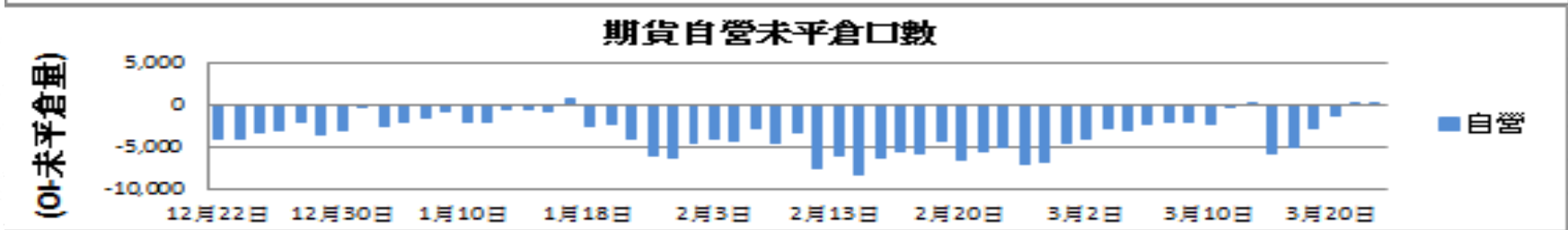
期貨外資未平倉口數 V.S 加權指數



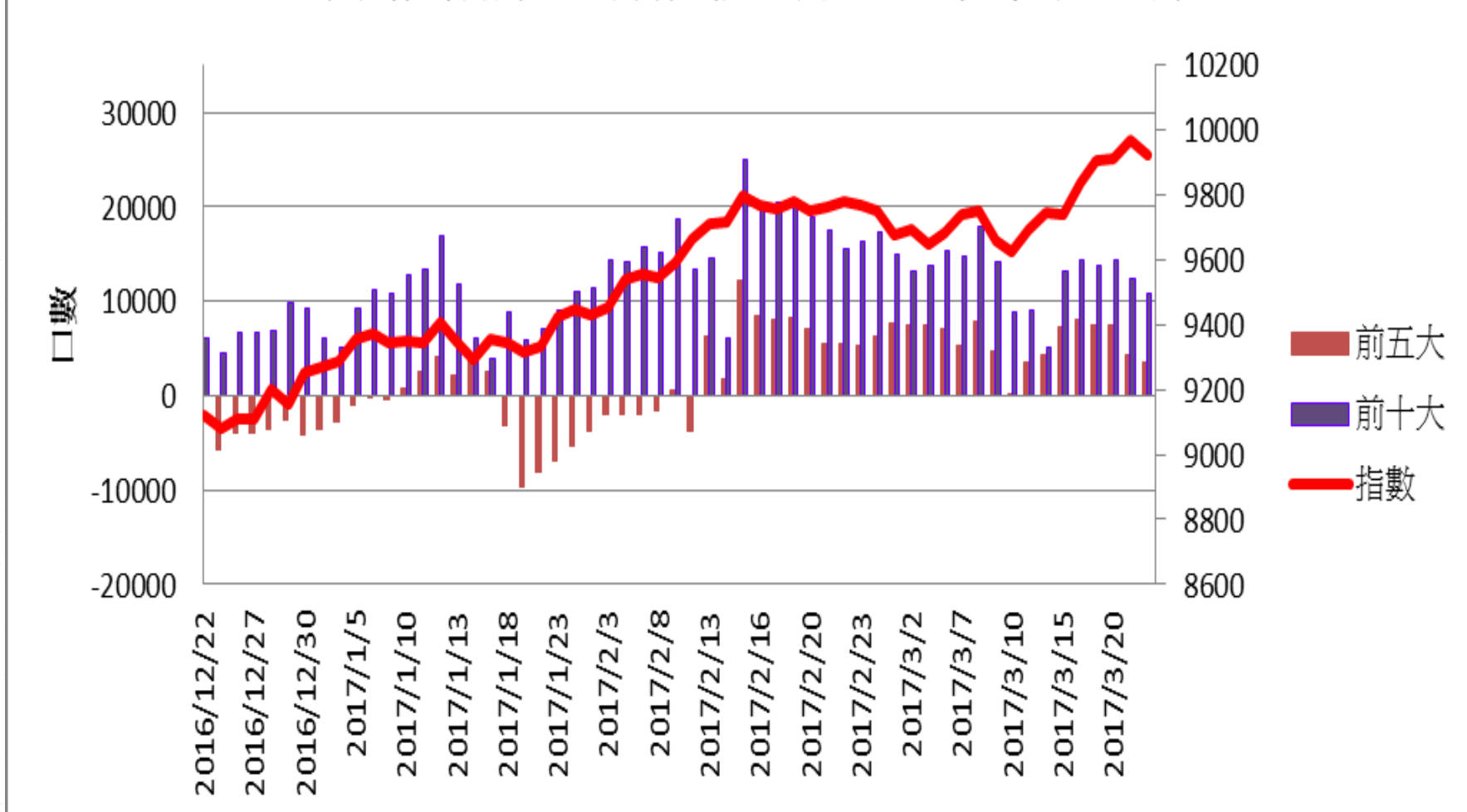
期貨投信未平倉口數



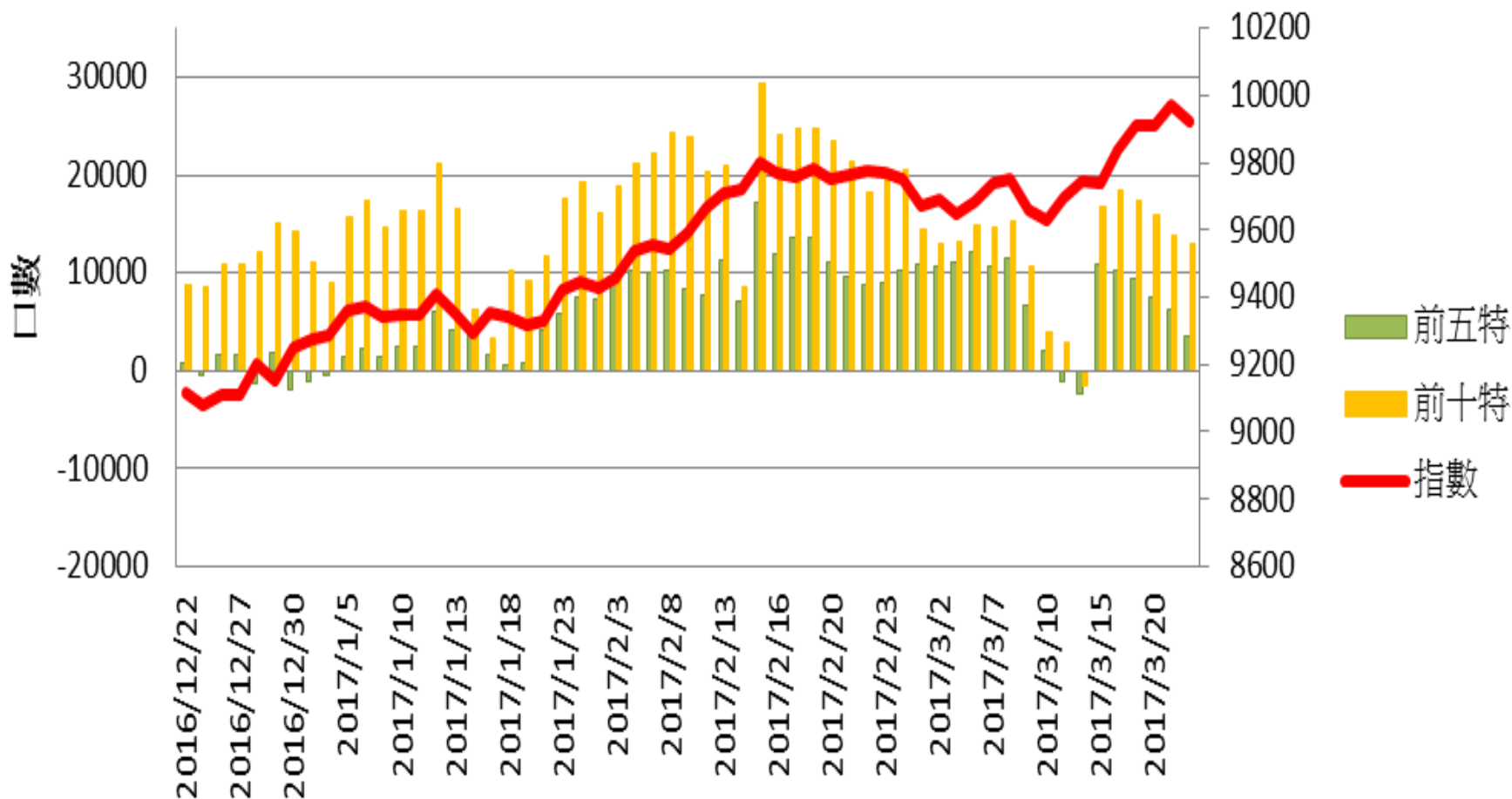
期貨自營未平倉口數



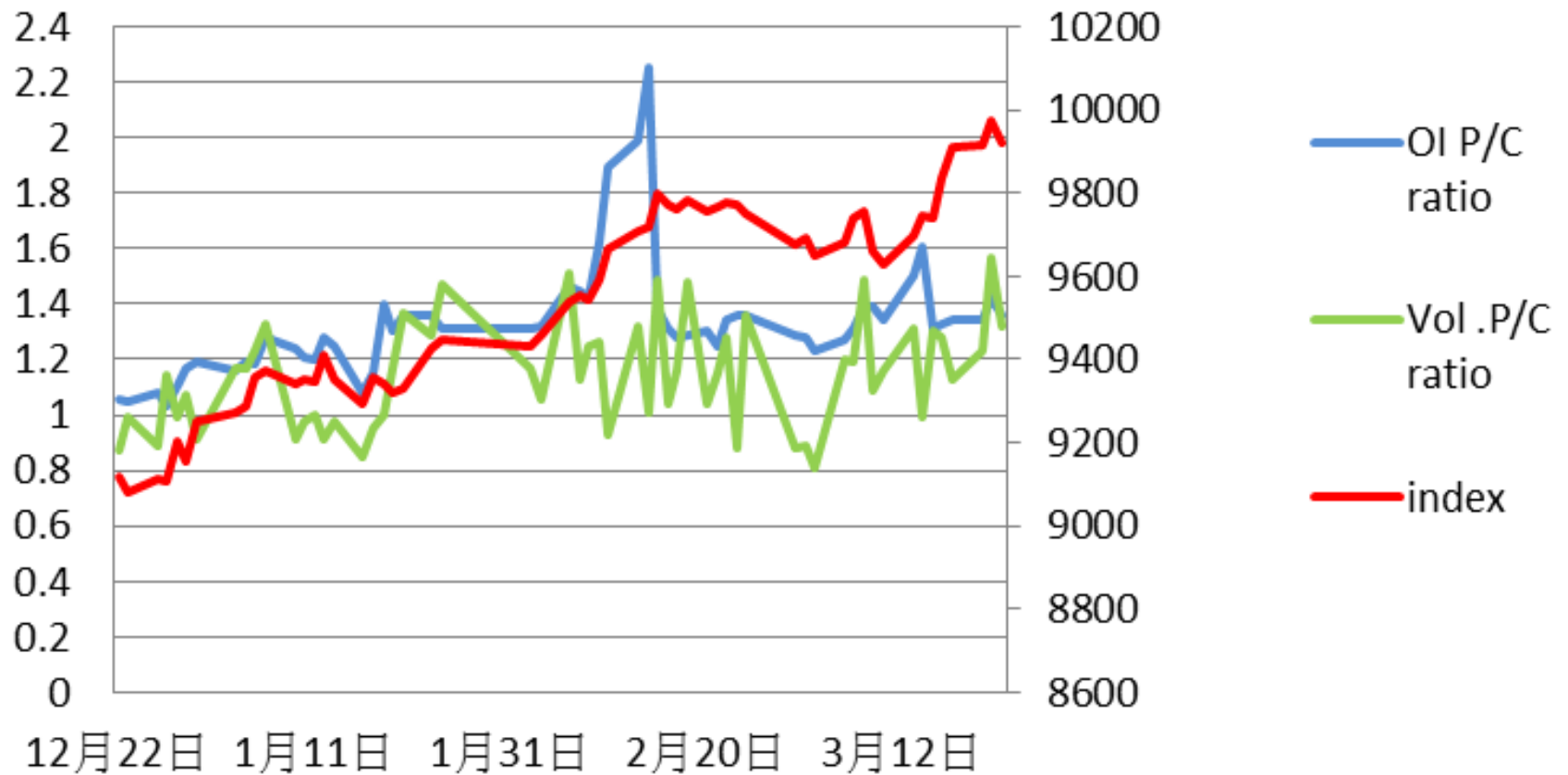
加權指數V.S期貨大額法人未平倉口數



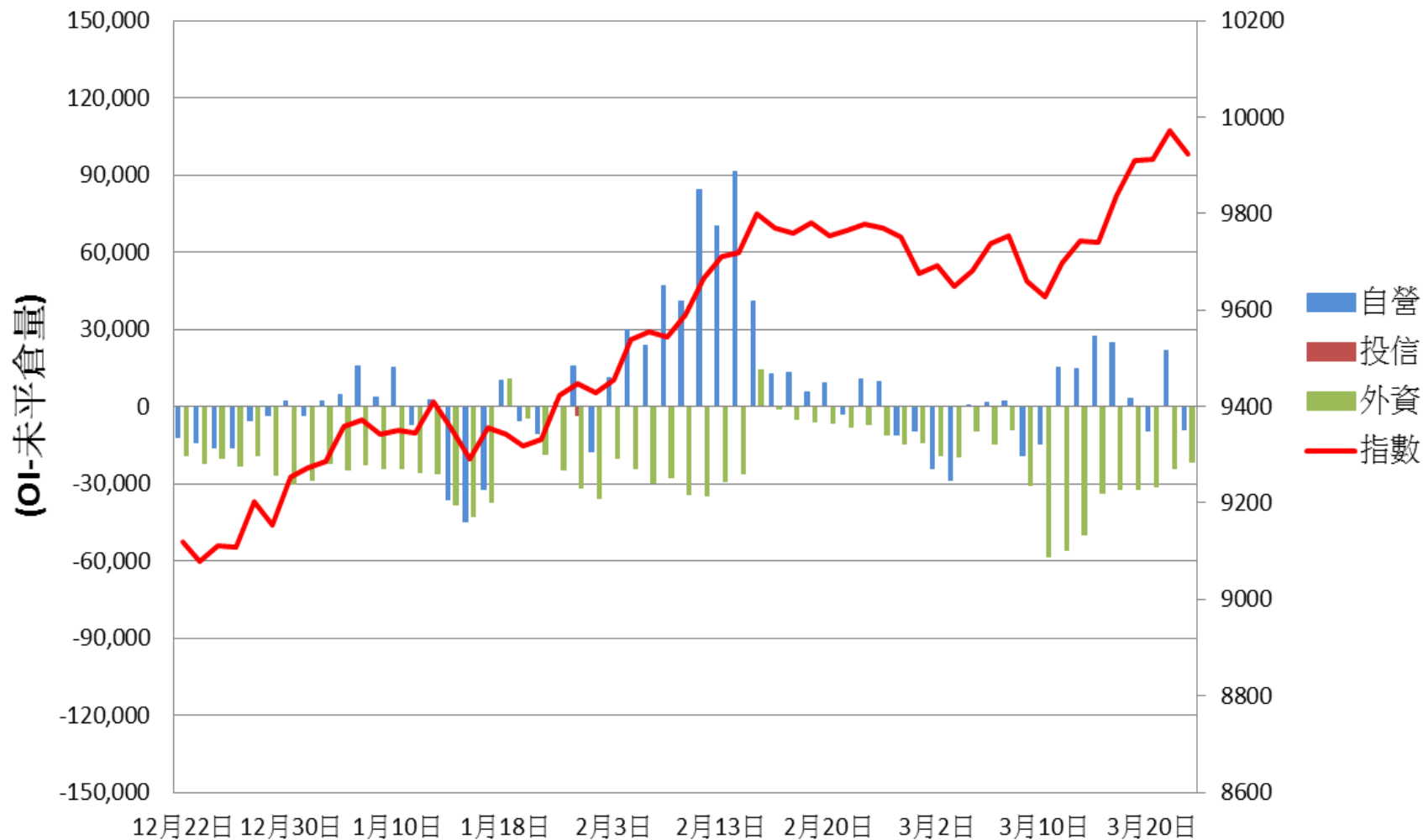
加權指數V.S期貨特定法人未平倉口數



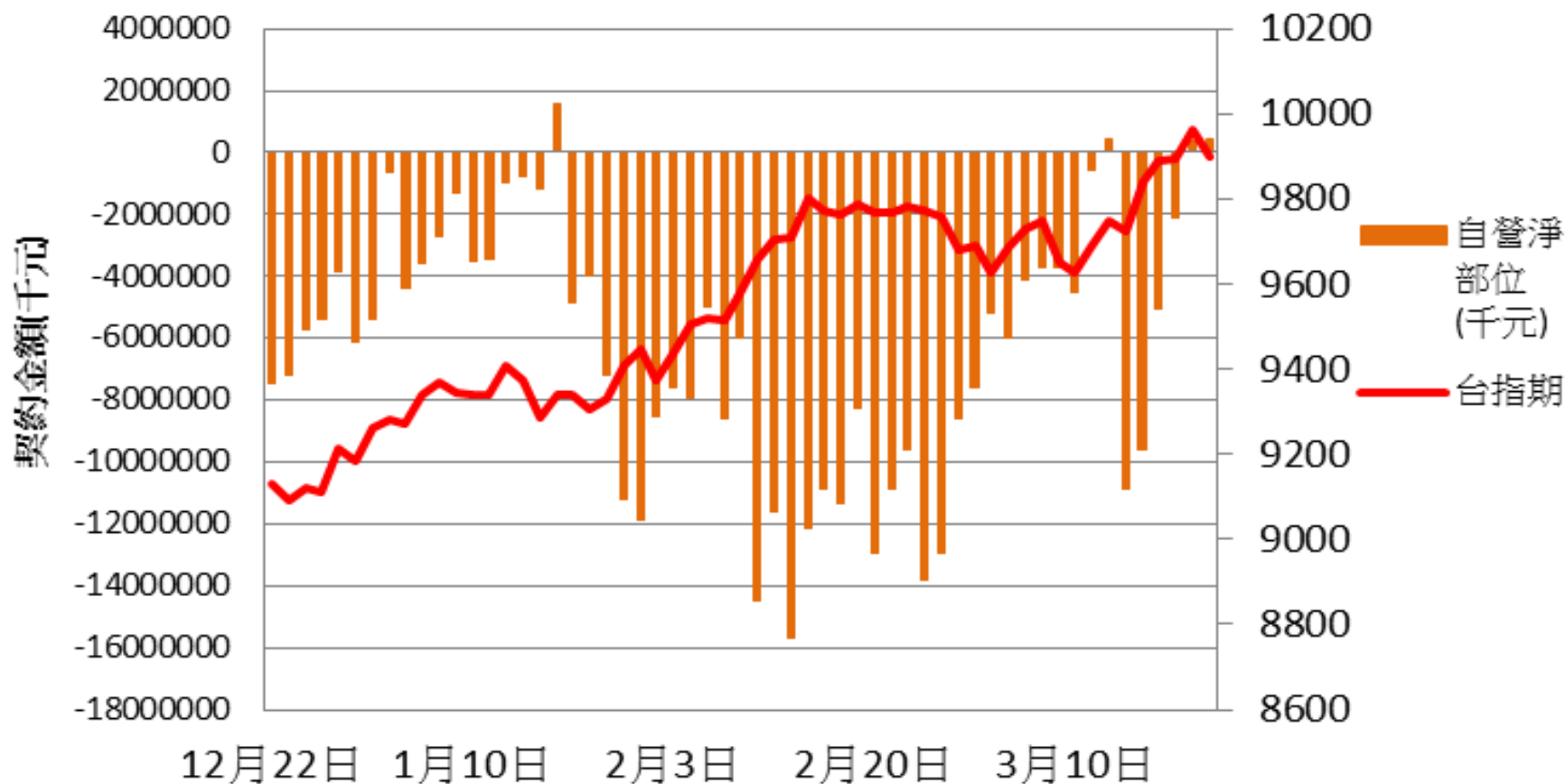
加權指數 V.S 未平倉量 P/C ratio V.S 成交量 P/C ratio



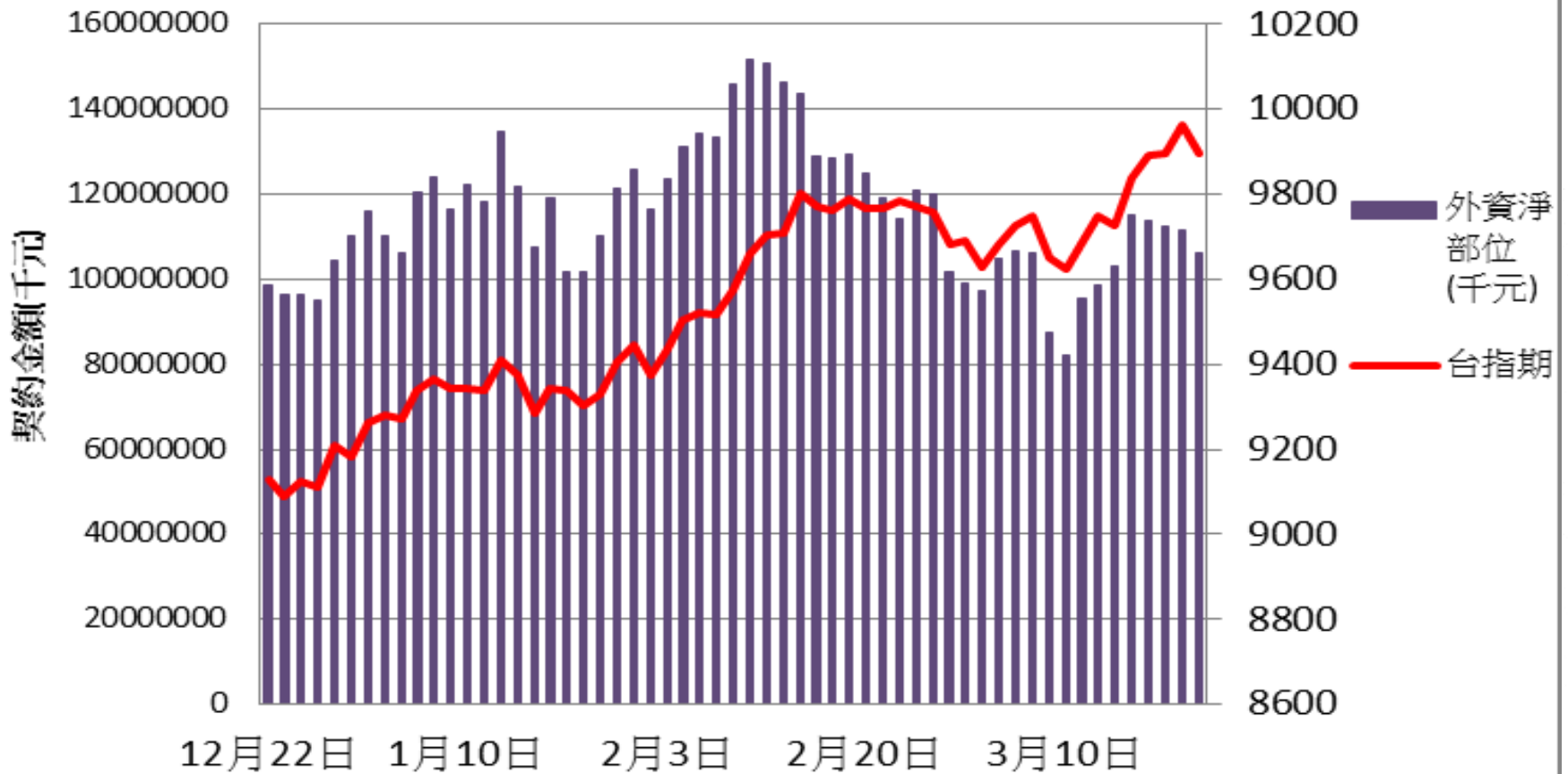
選擇權三大法人未平倉口數 v.s 加權指數



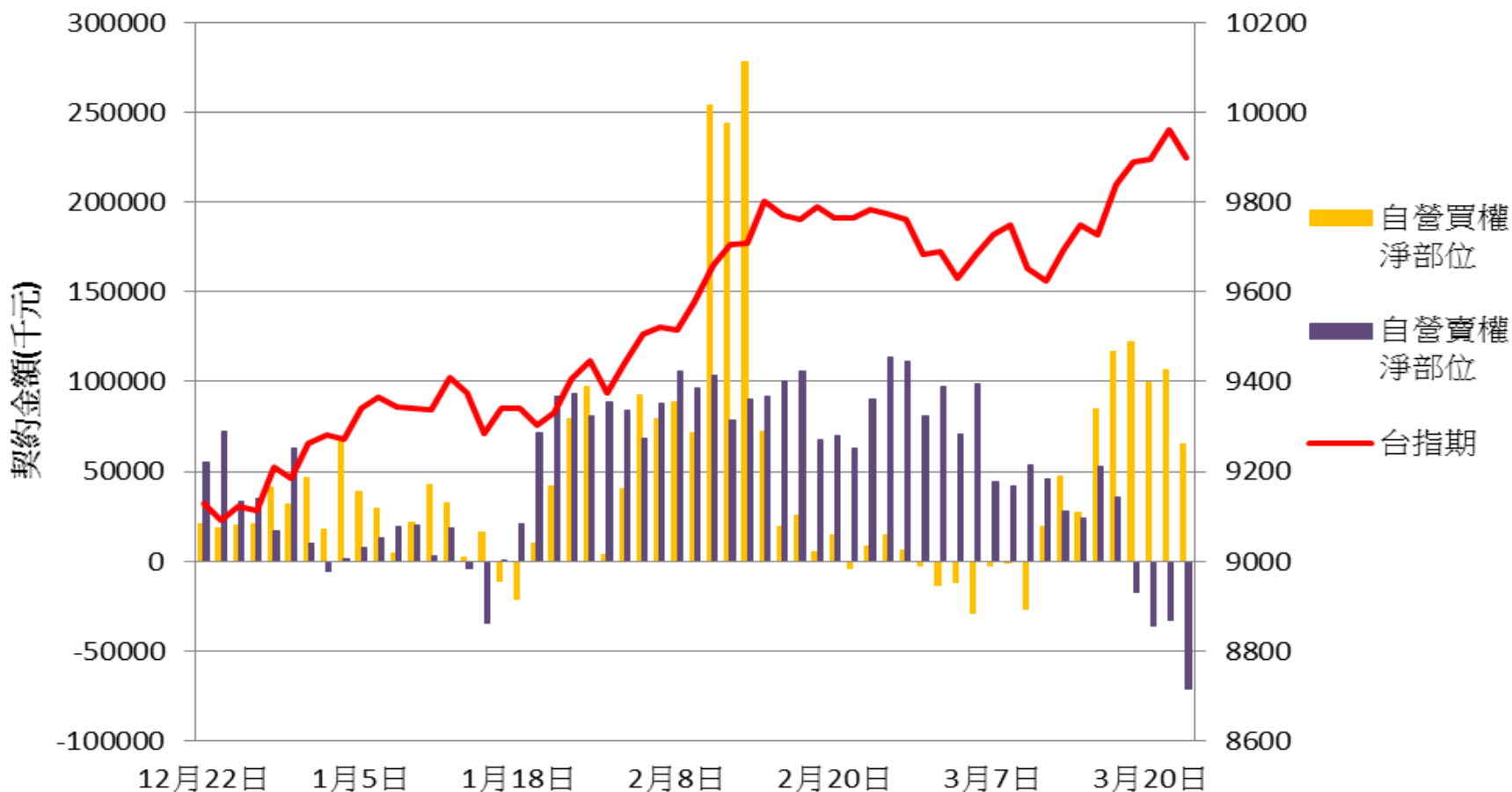
自營台指期與選擇權淨部位契約金額V.S台指期

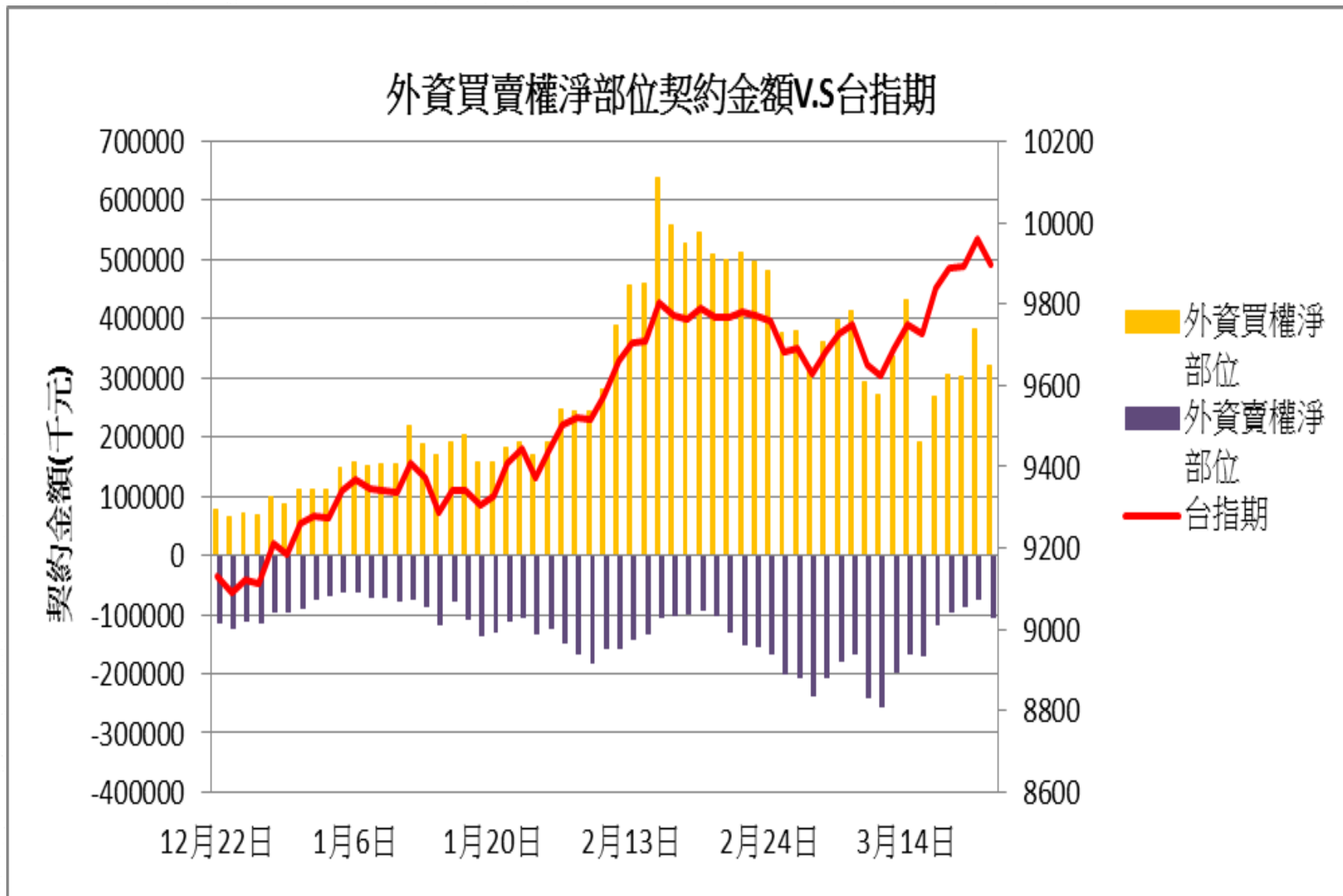


外資台指期與選擇權淨部位契約金額v.s台指期



自營買賣權淨部位契約金額V.S台指期









技術分析

TWD 台幣(日) 買 30.497 賣 30.506 +0.057 +0.1873% 07:46:00



技術分析

TWI 加權指數(日) 9922.660 -49.830 -0.50% 13:31:00 開9911.960 高9922.660 低9843.070

