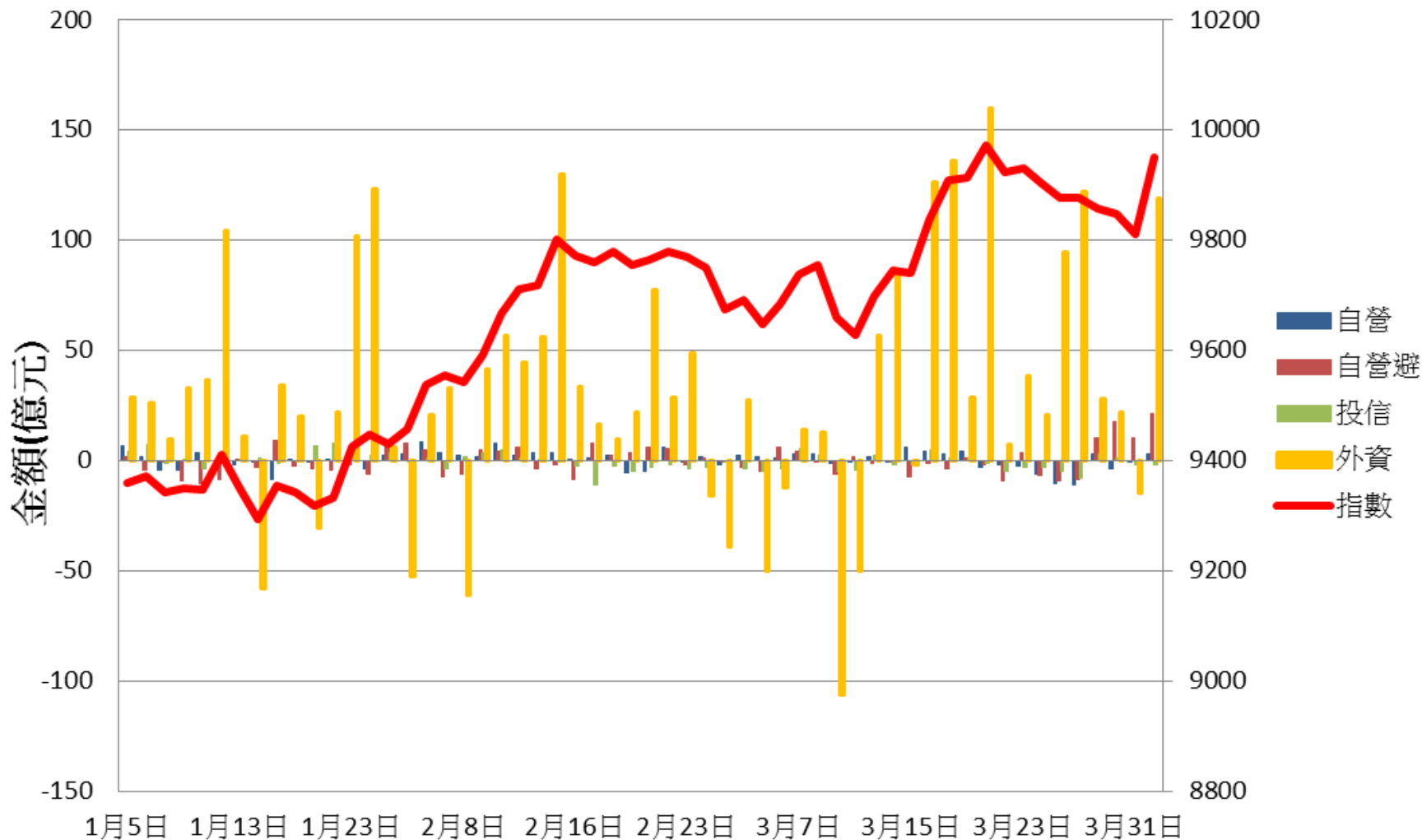
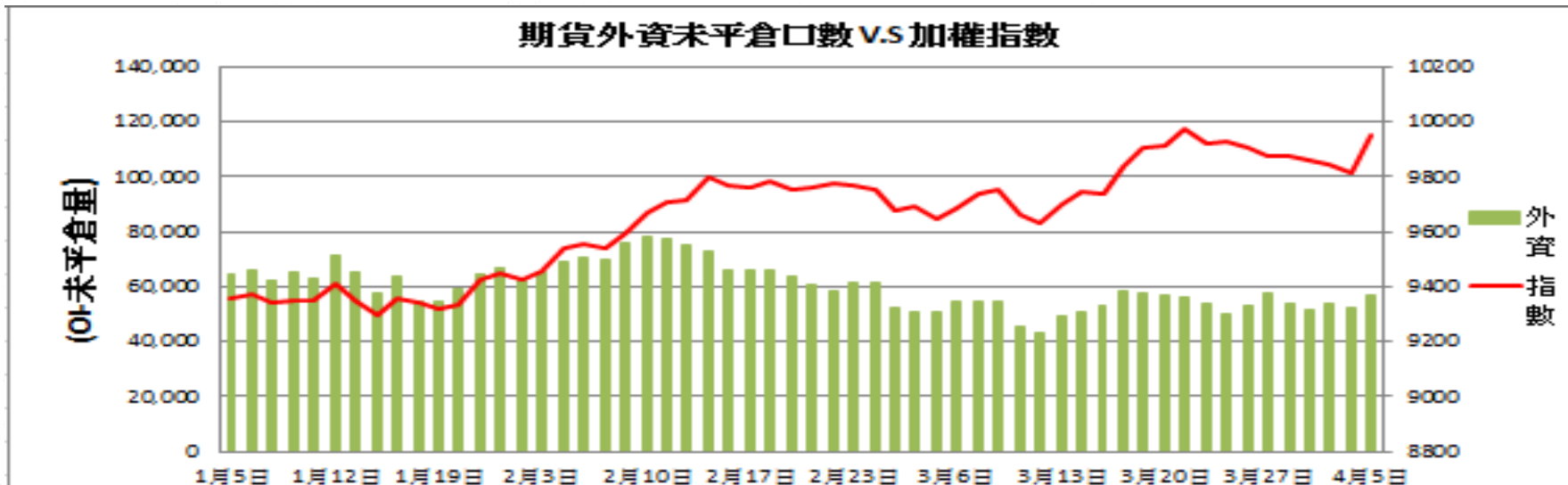


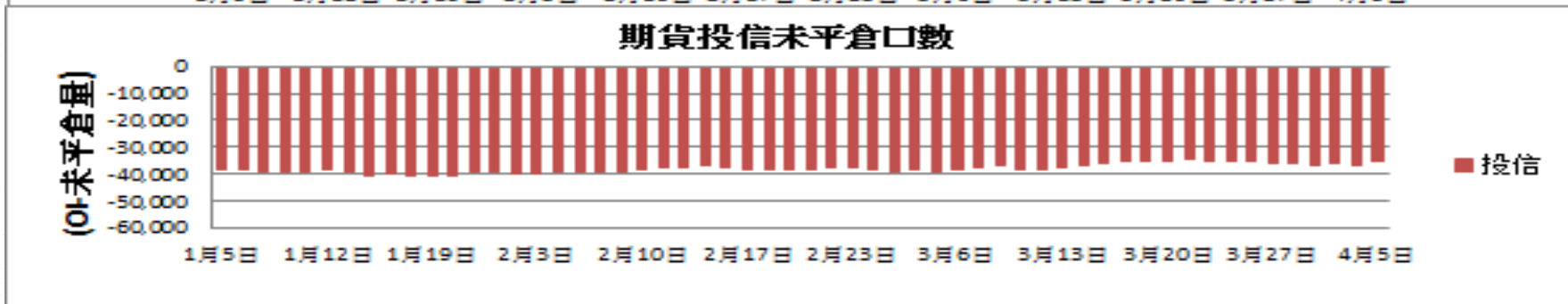
證券三大法人每日買賣超 V.S 加權指數



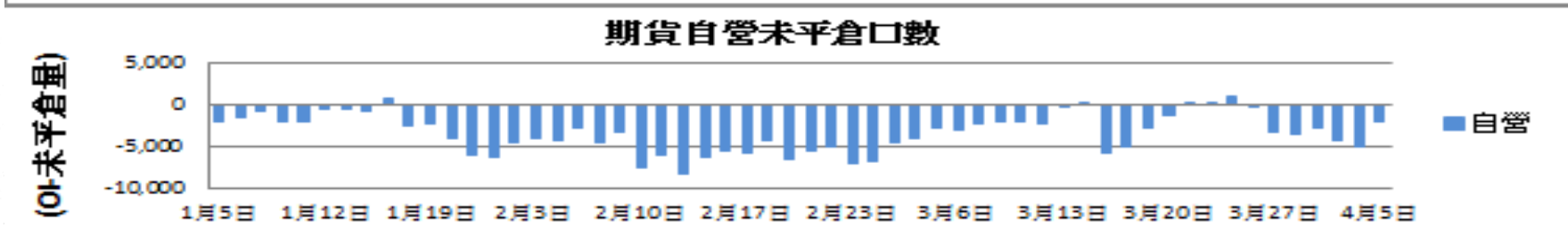
期貨外資未平倉口數 V.S 加權指數



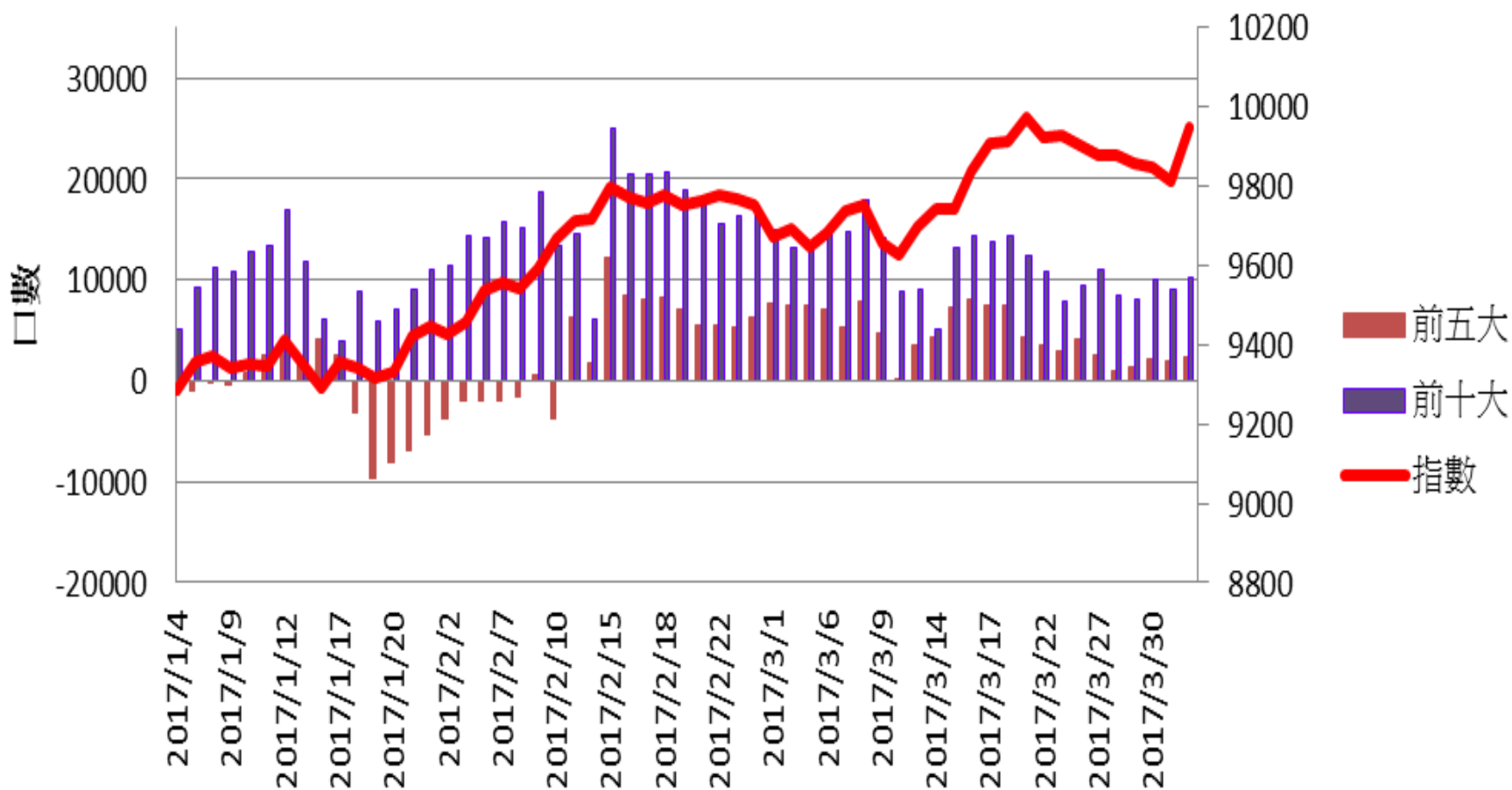
期貨投信未平倉口數



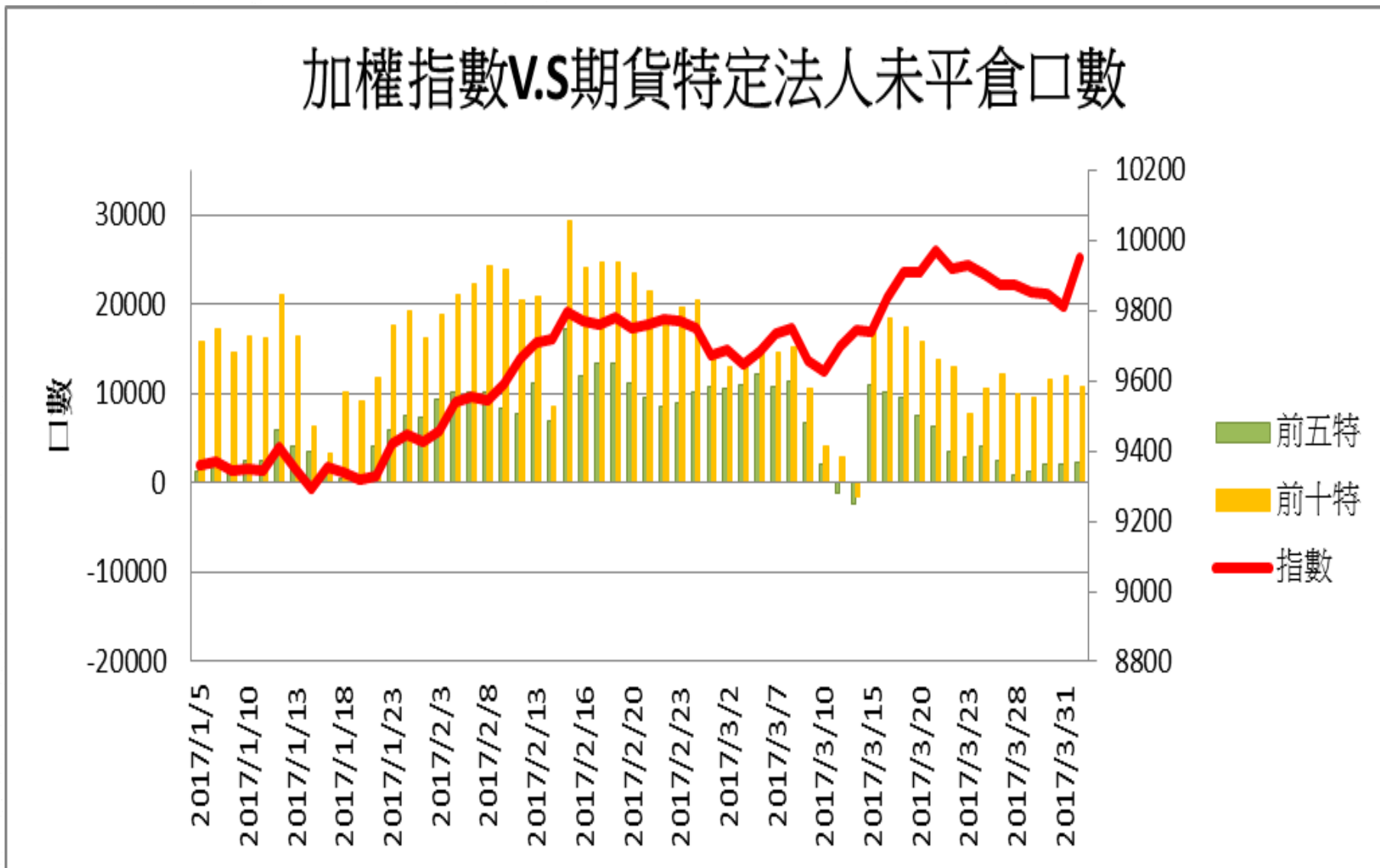
期貨自營未平倉口數



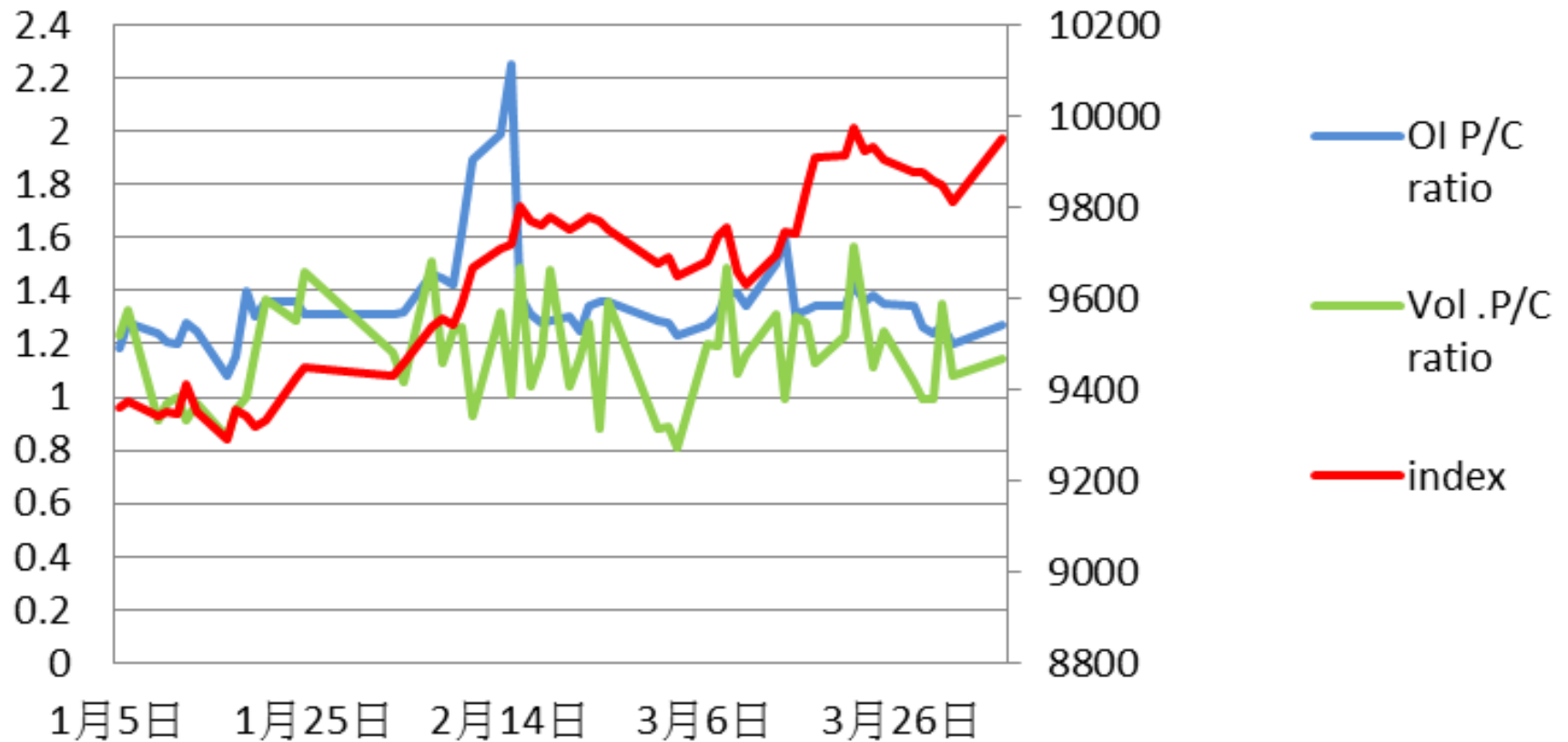
加權指數V.S期貨大額法人未平倉口數



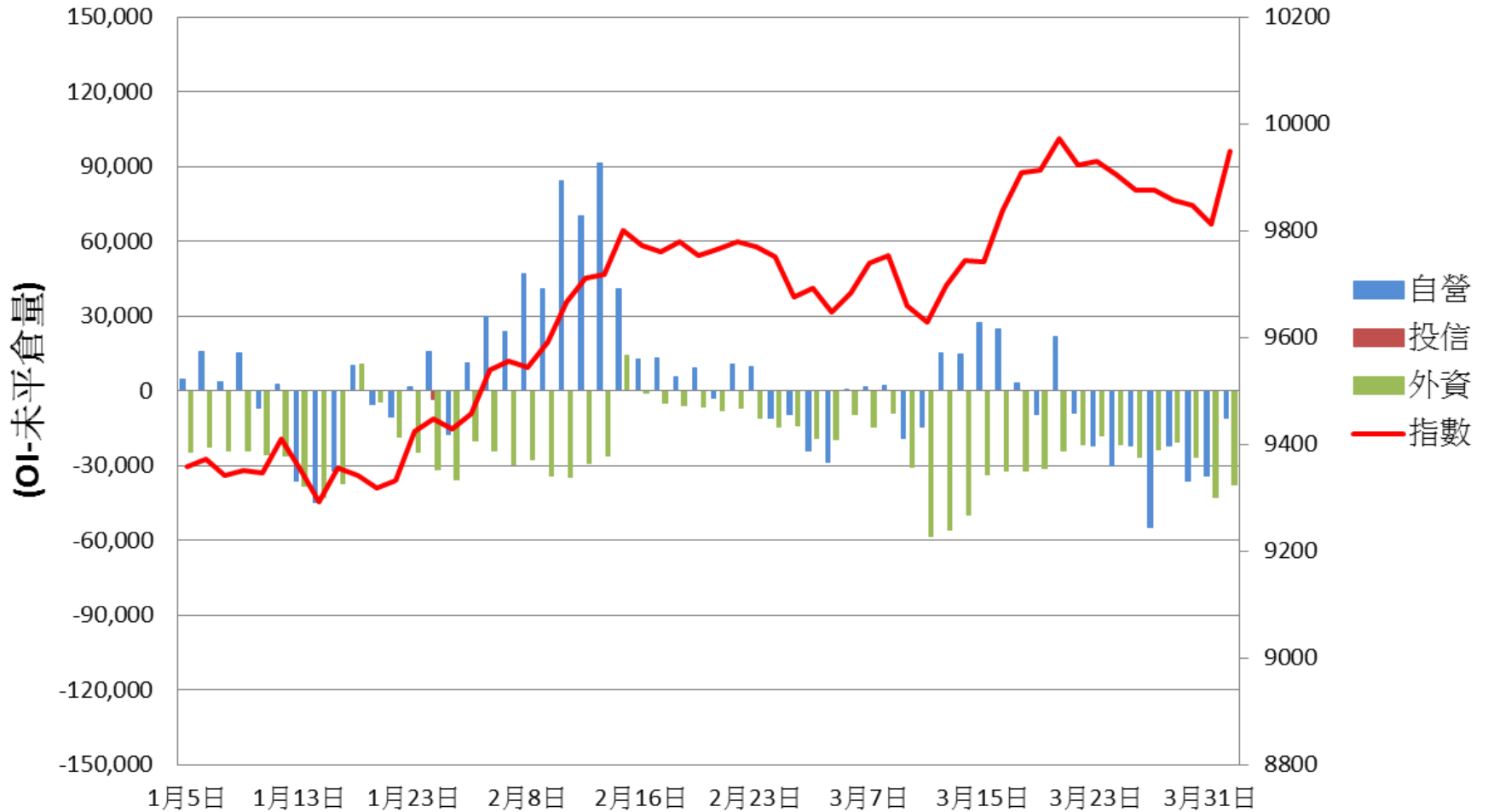
加權指數V.S期貨特定法人未平倉口數



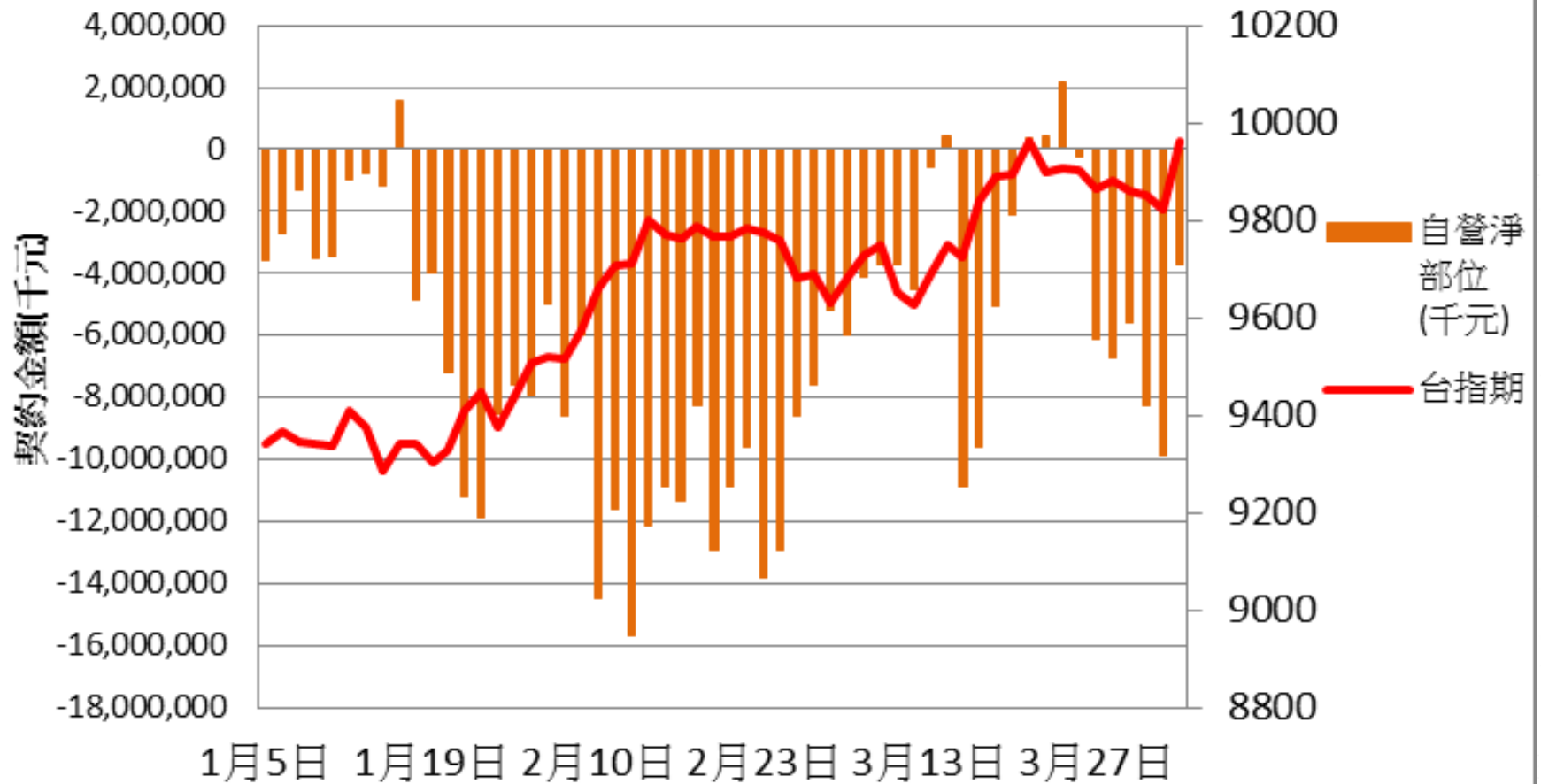
加權指數V.S未平倉量P/Cratio V.S 成交量 P/C ratio



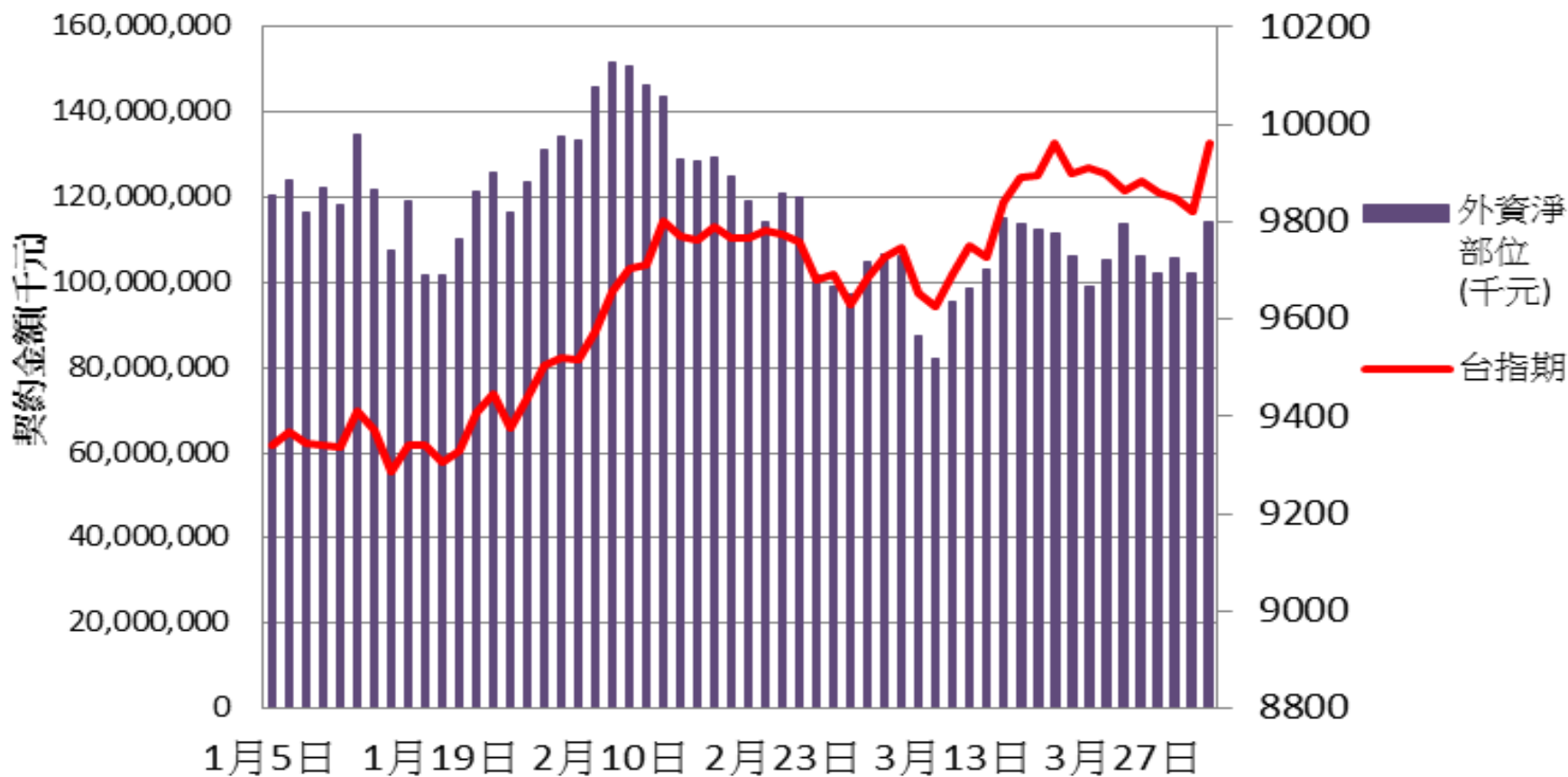
選擇權三大法人未平倉口數 v.s 加權指數



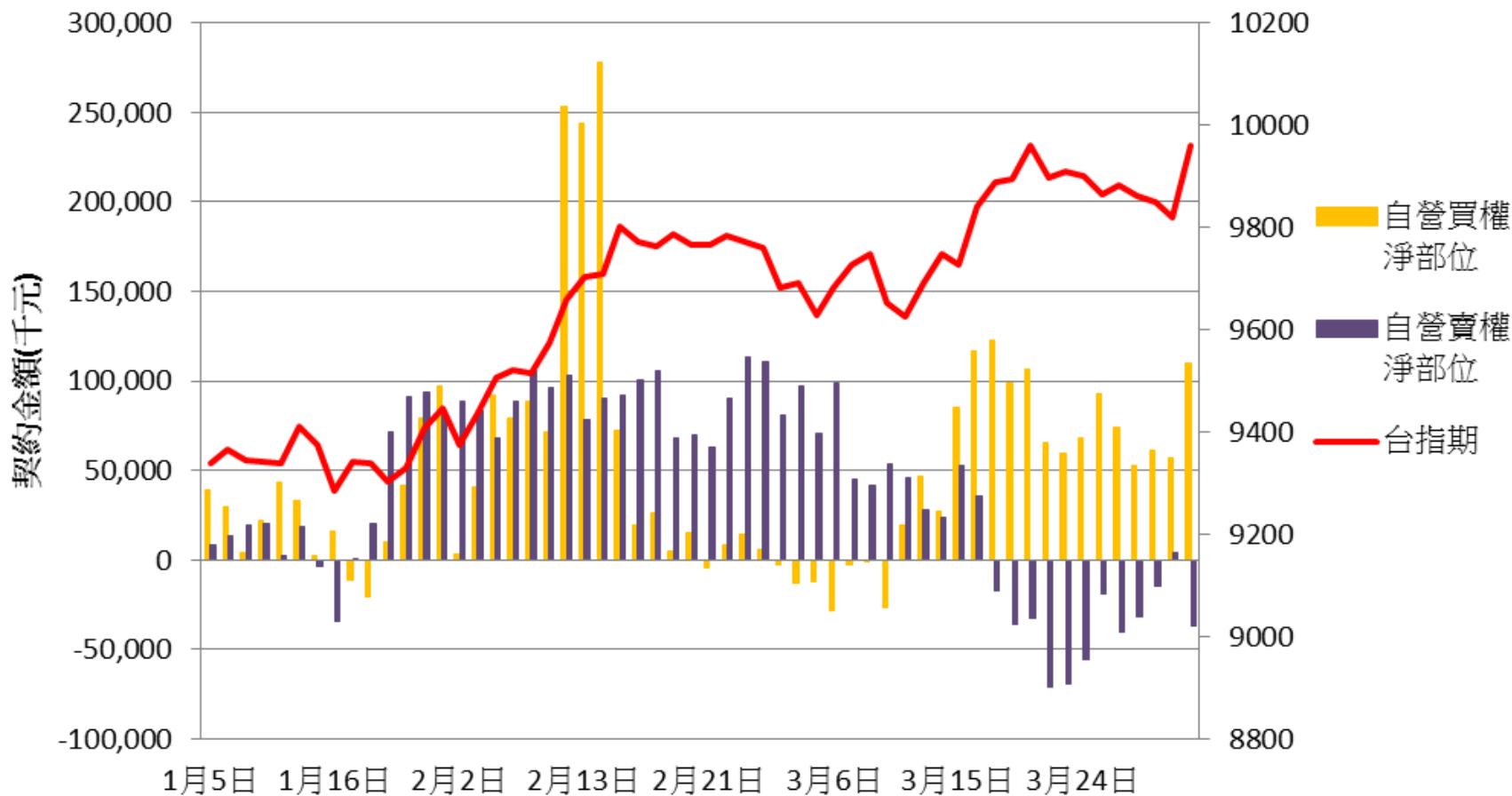
自營台指期與選擇權淨部位契約金額V.S台指期



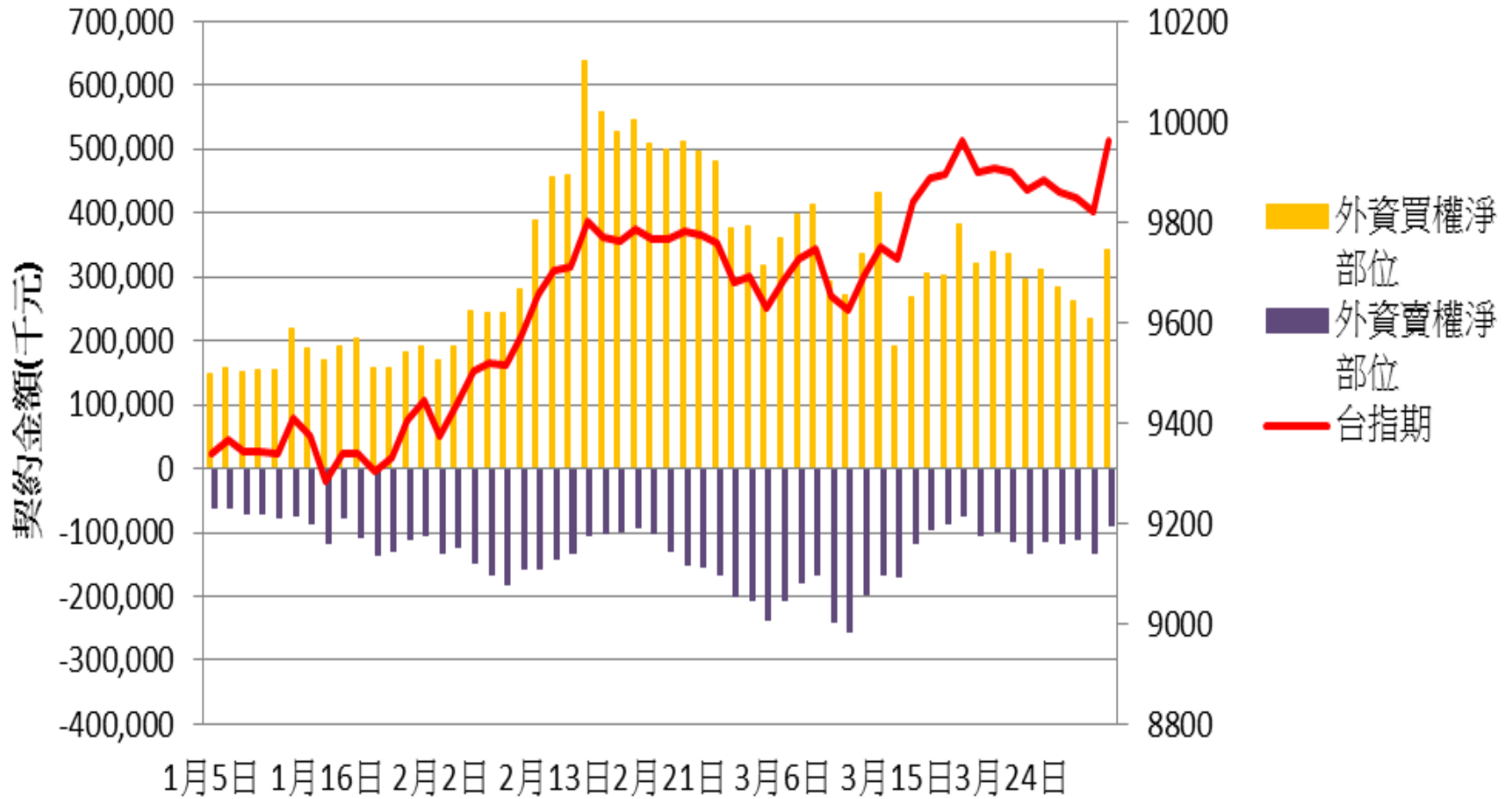
外資台指期與選擇權淨部位契約金額V.S台指期



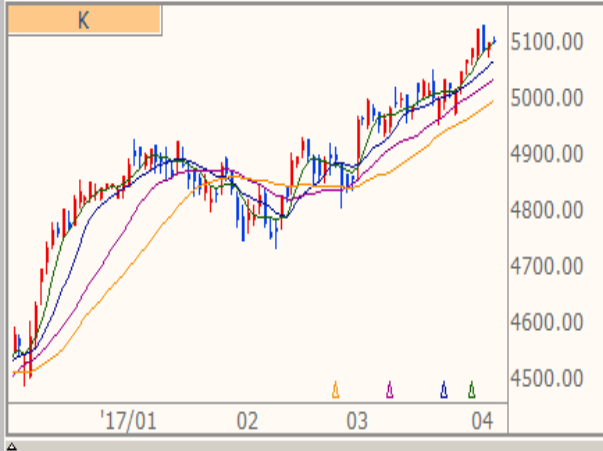
自營買賣權淨部位契約金額V.S台指期



外資買賣權淨部位契約金額V.S台指期



技術分析
CAC 法國巴黎(日) ↑ 5101.270 +0.140 +0.00%
09:31:00 開 5104.710 高 5113.520 低 5099.090



技術分析
DAX 法蘭克福(日) 12258.590 -23.750 -0.19%
09:31:05 開 12280.060 高 12293.130 低 12255.320



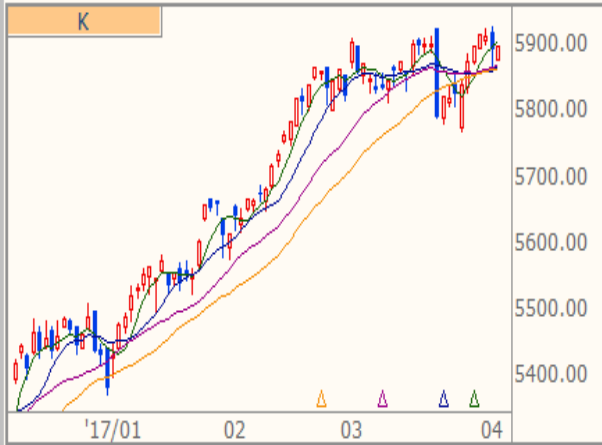
技術分析
NKI 日經指數(日) ↑ 18861.270 +51.020 +0.27%
15:00:02 開 18900.700 高 18941.940 低 18773.940



技術分析
FTH 時報金融(日) ↓ 7345.480 +23.660 +0.32%
08:31:05 開 7321.820 高 7355.050 低 7321.820



技術分析
NAS NASDAQ(日) ↑ 5898.610 +3.930 +0.07%
16:00:00 開 5878.760 高 5901.390 低 5878.760



技術分析
DJI 道瓊指數(日) 20689.240 +39.030 +0.19%
16:46:34 開 20634.940 高 20701.290 低 20605.300





