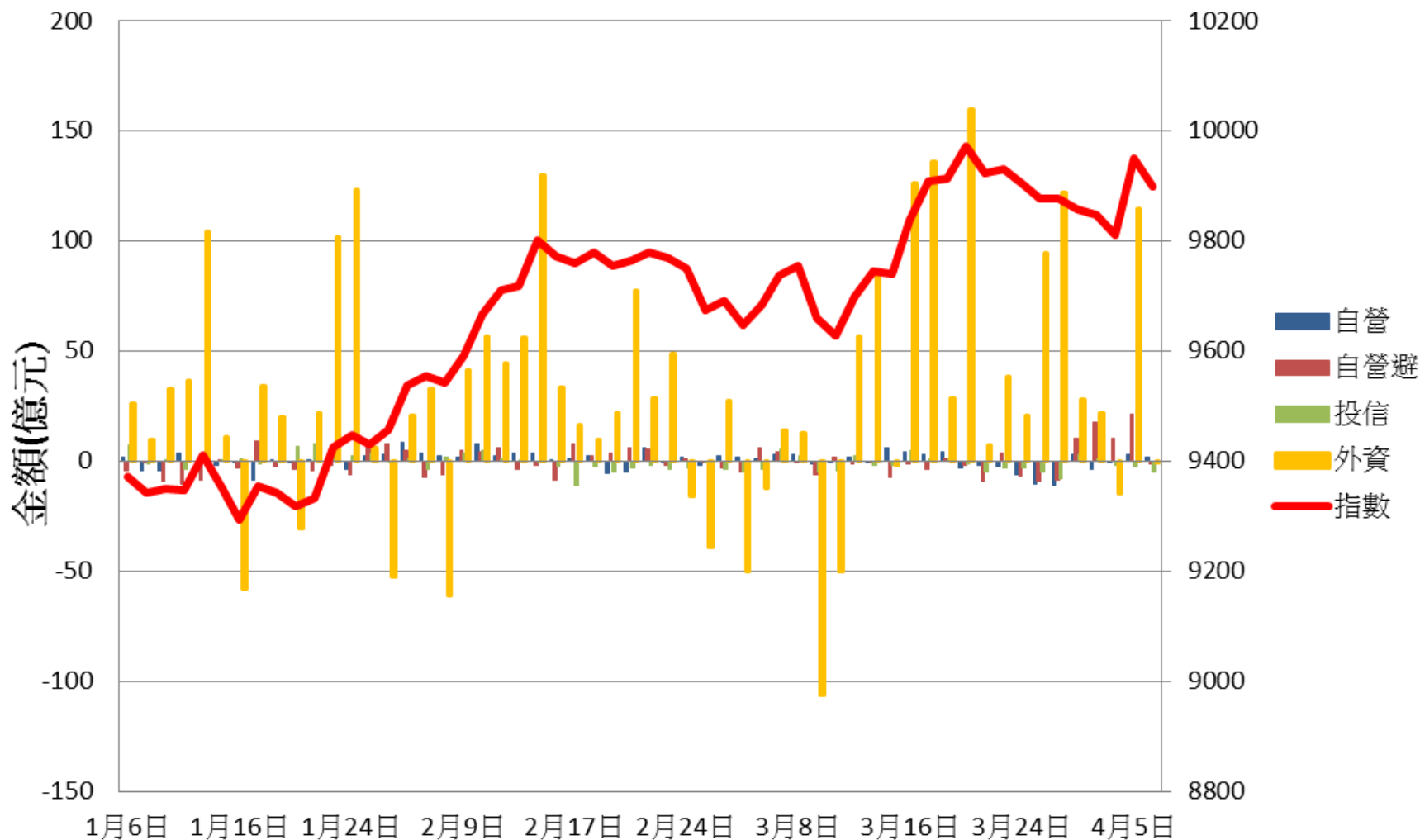
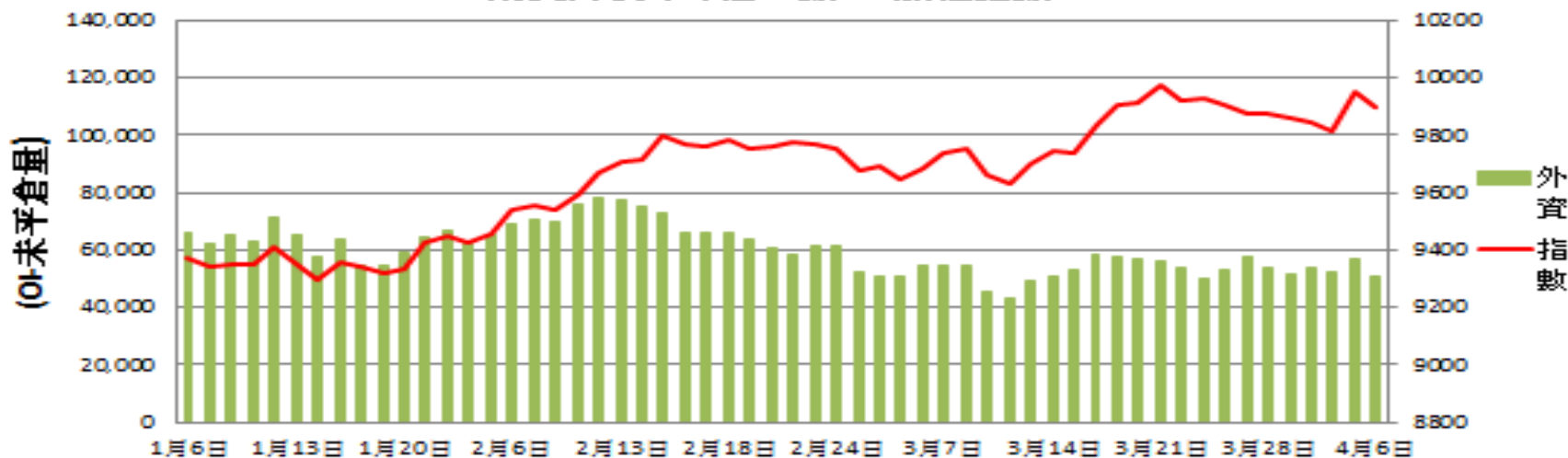


證券三大法人每日買賣超 V.S 加權指數



期貨外資未平倉口數 V.S 加權指數



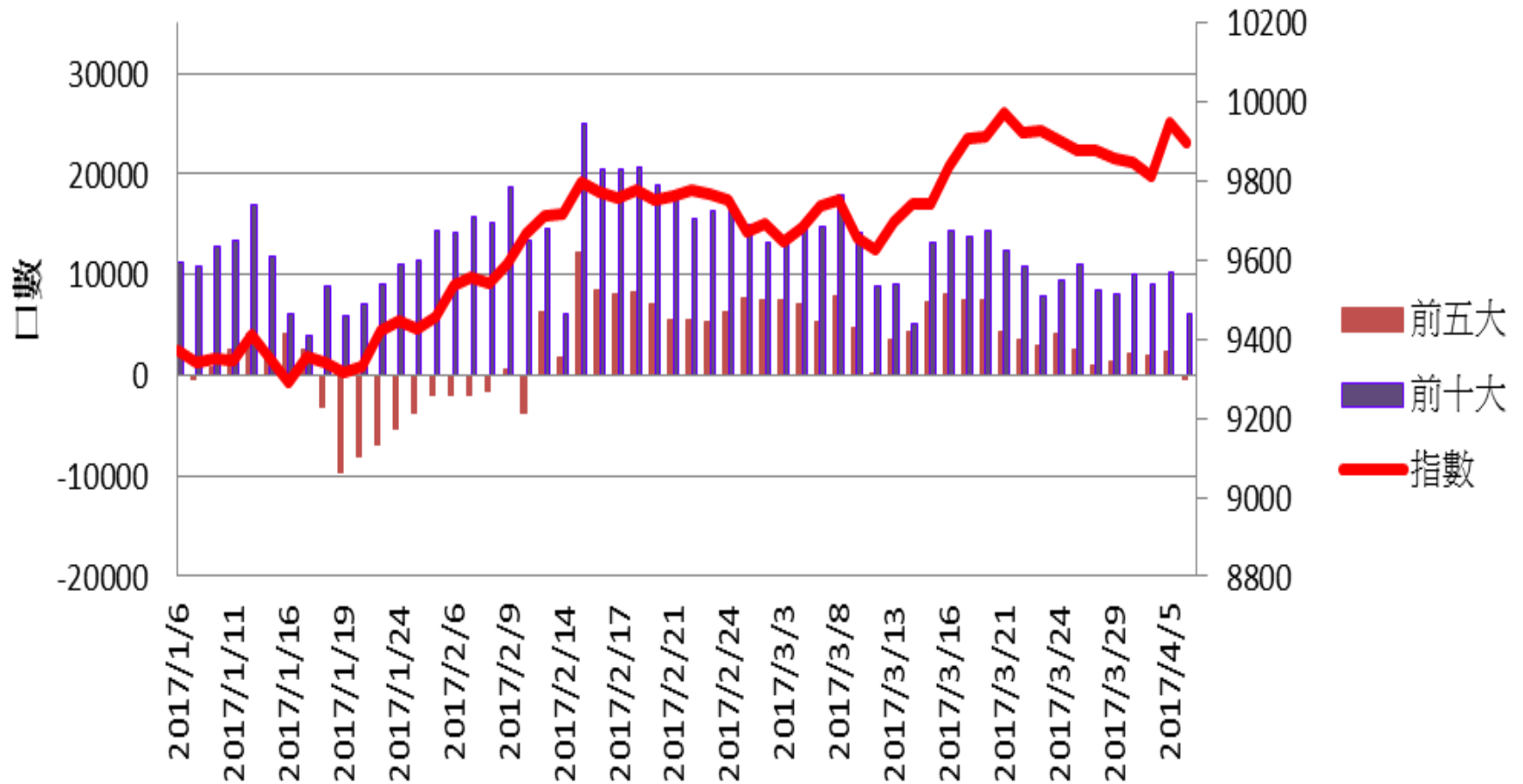
期貨投信未平倉口數



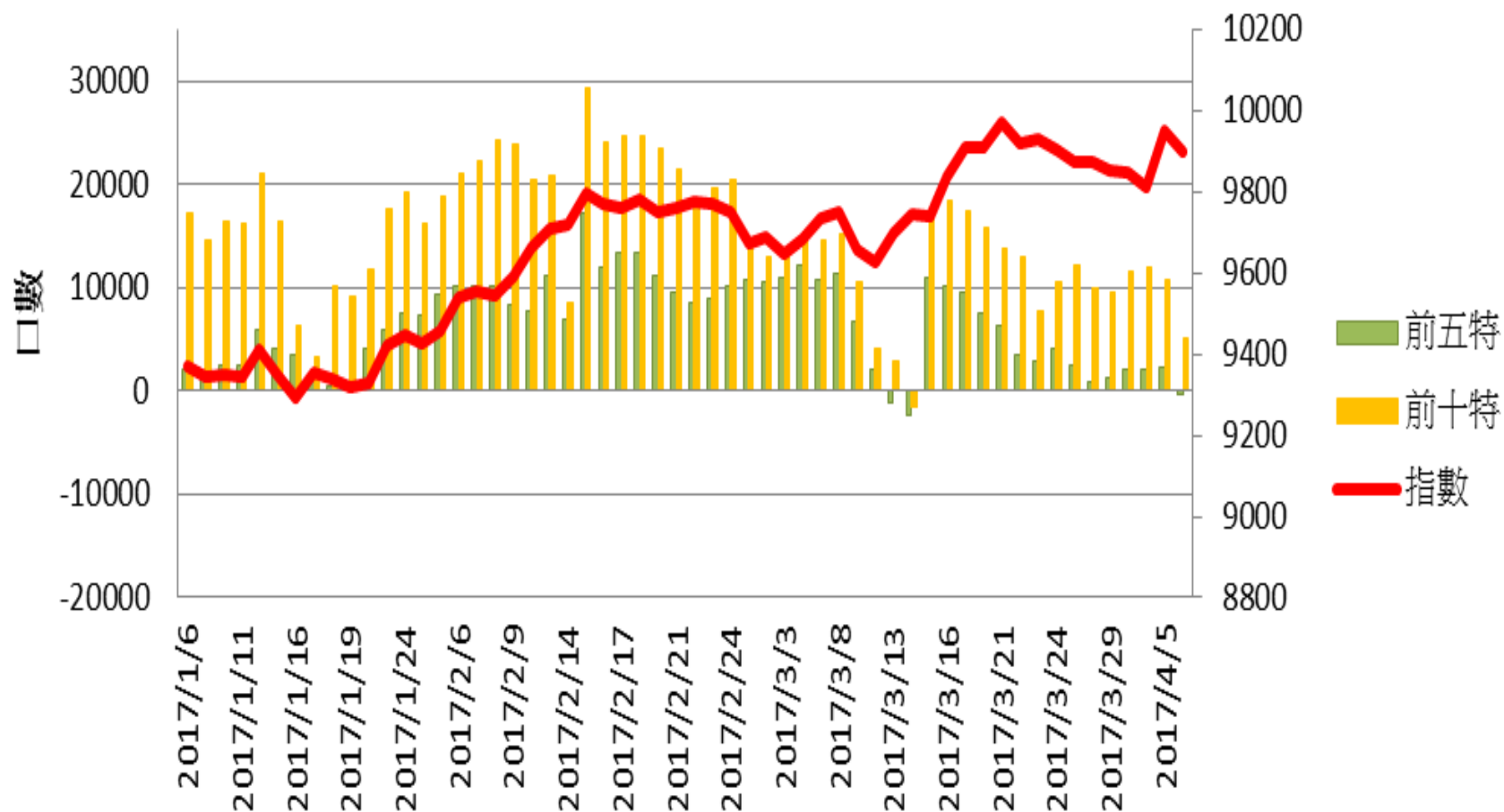
期貨自營未平倉口數



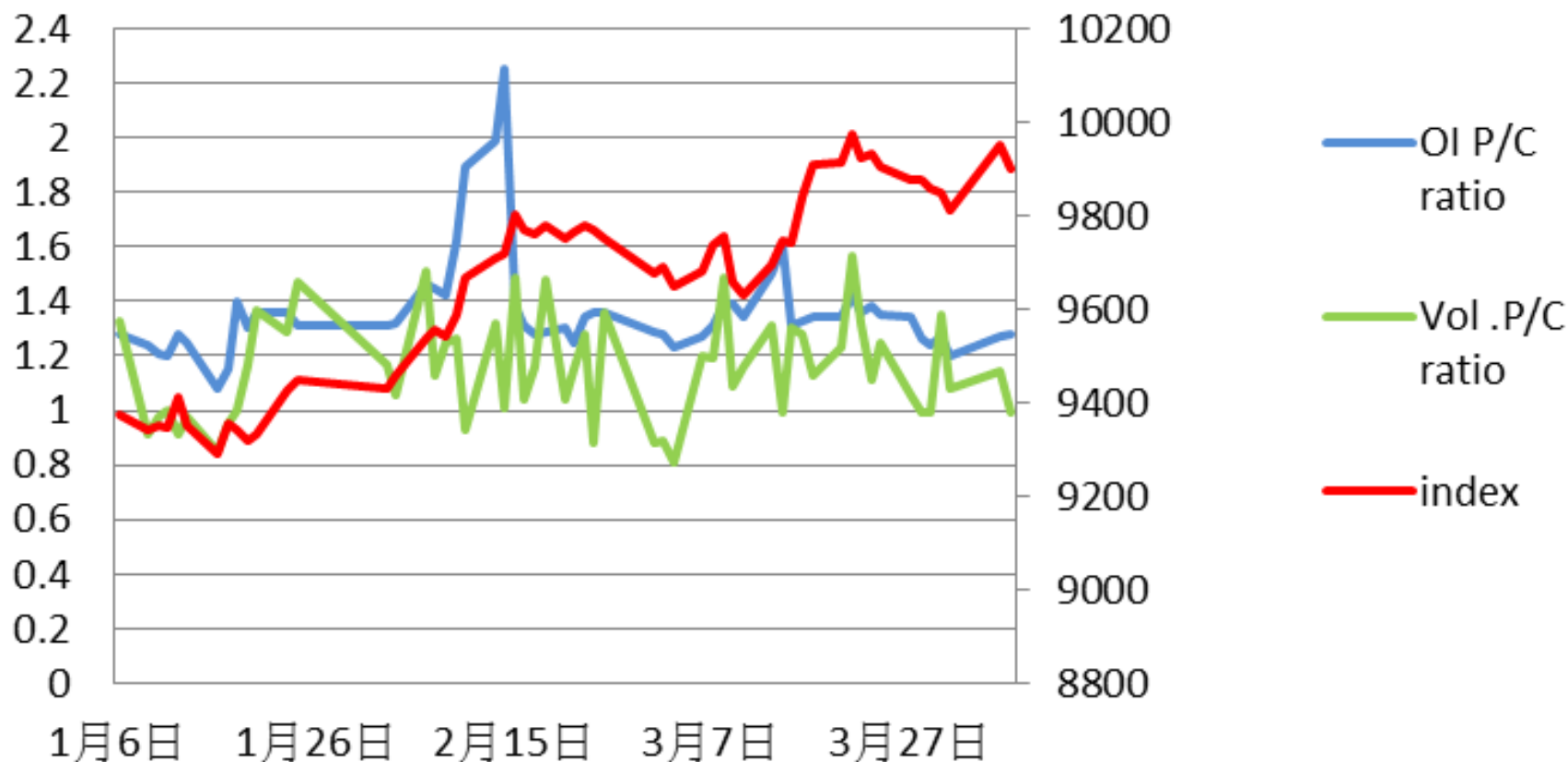
加權指數V.S期貨大額法人未平倉口數



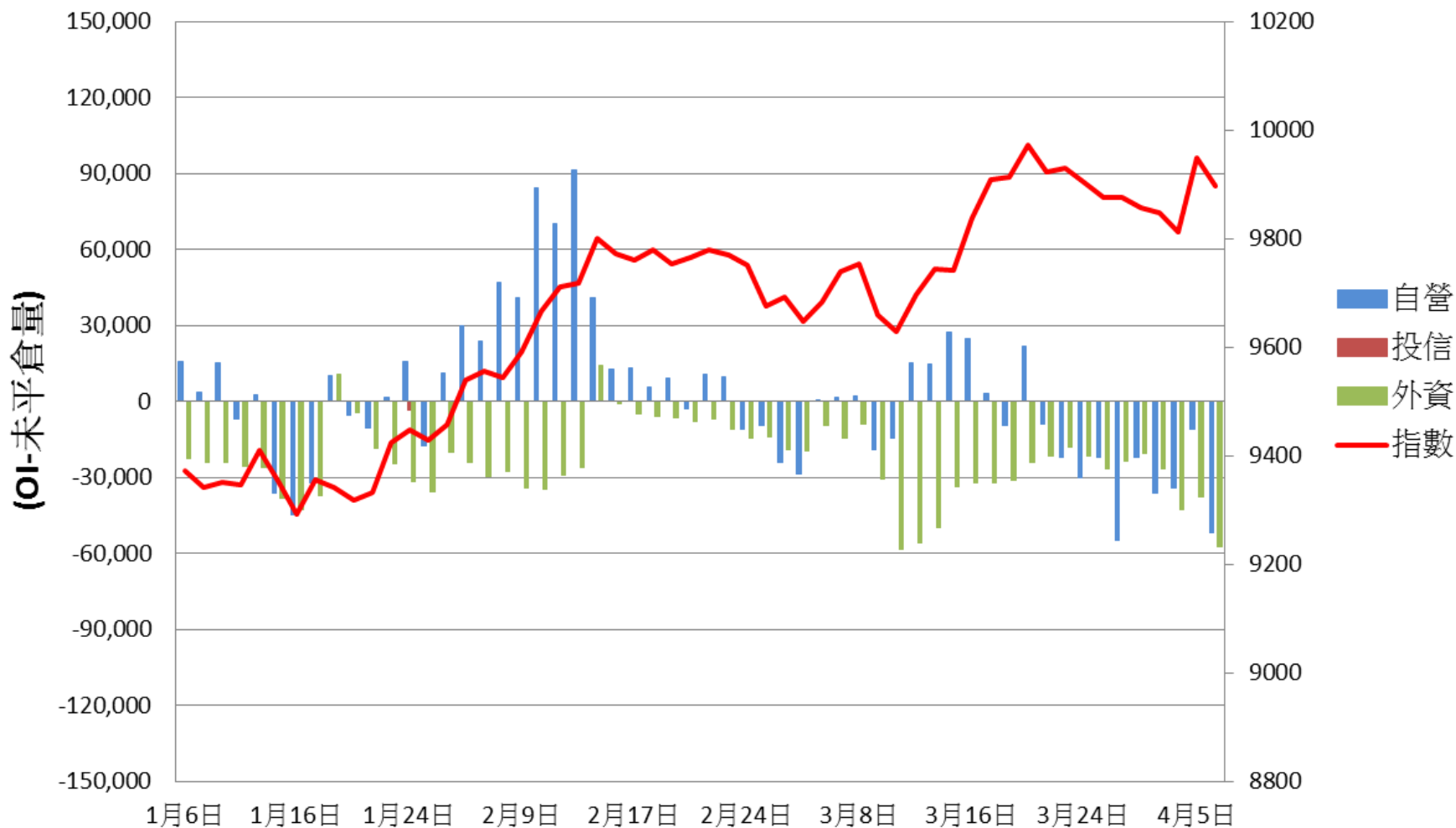
加權指數V.S期貨特定法人未平倉口數



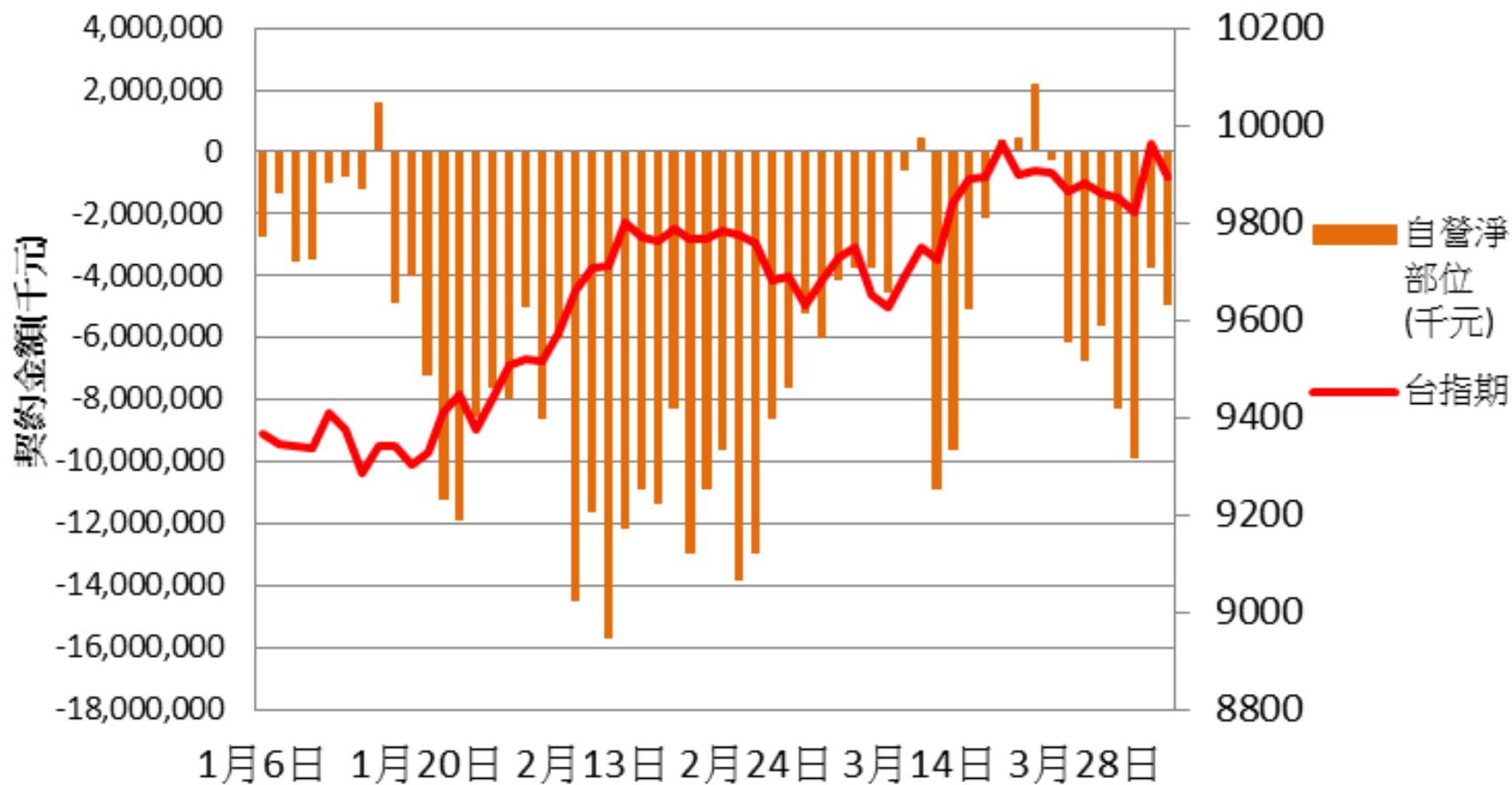
加權指數V.S未平倉量P/Cratio V.S 成交量 P/C ratio



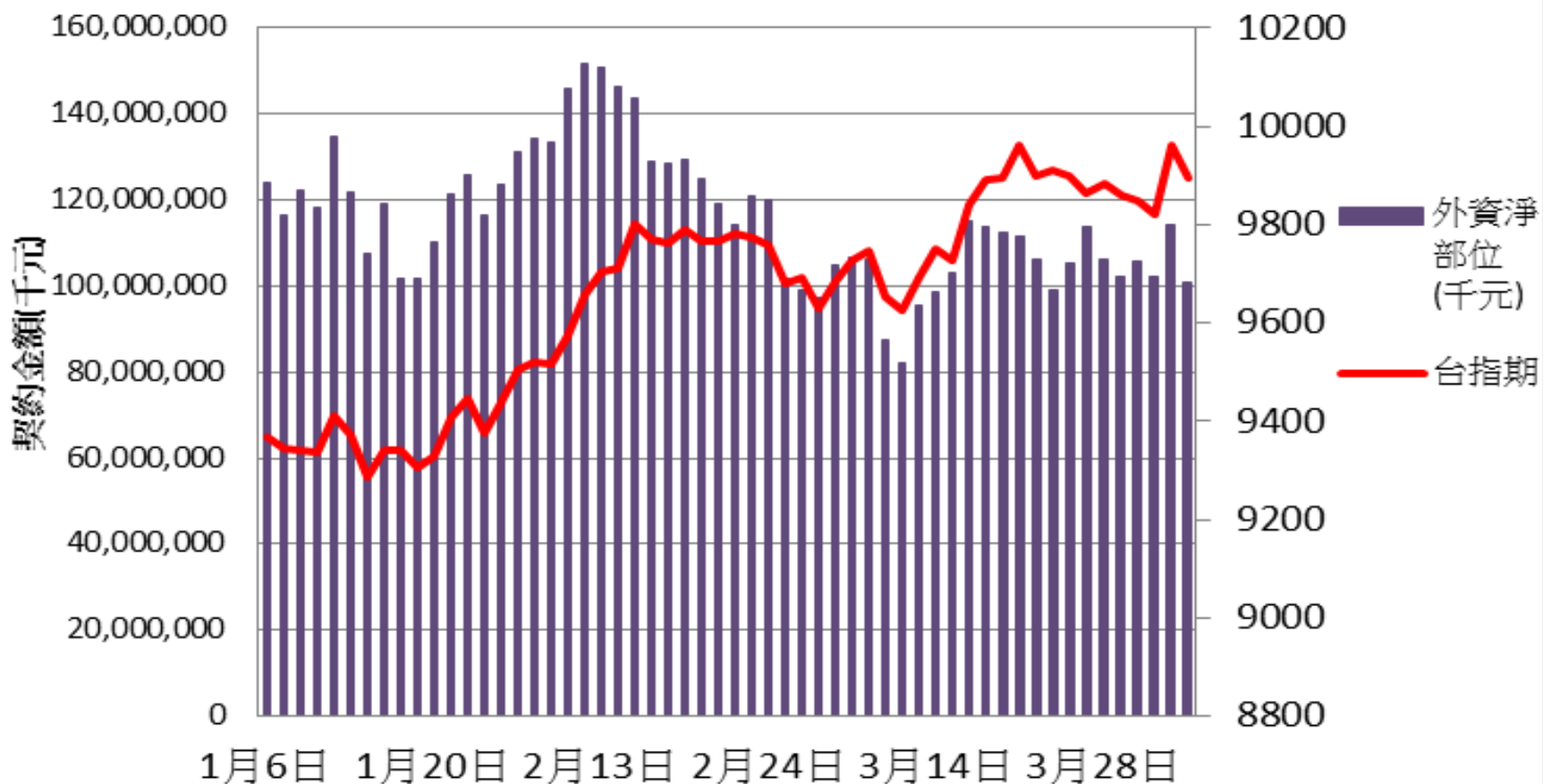
選擇權三大法人未平倉口數 V.S 加權指數



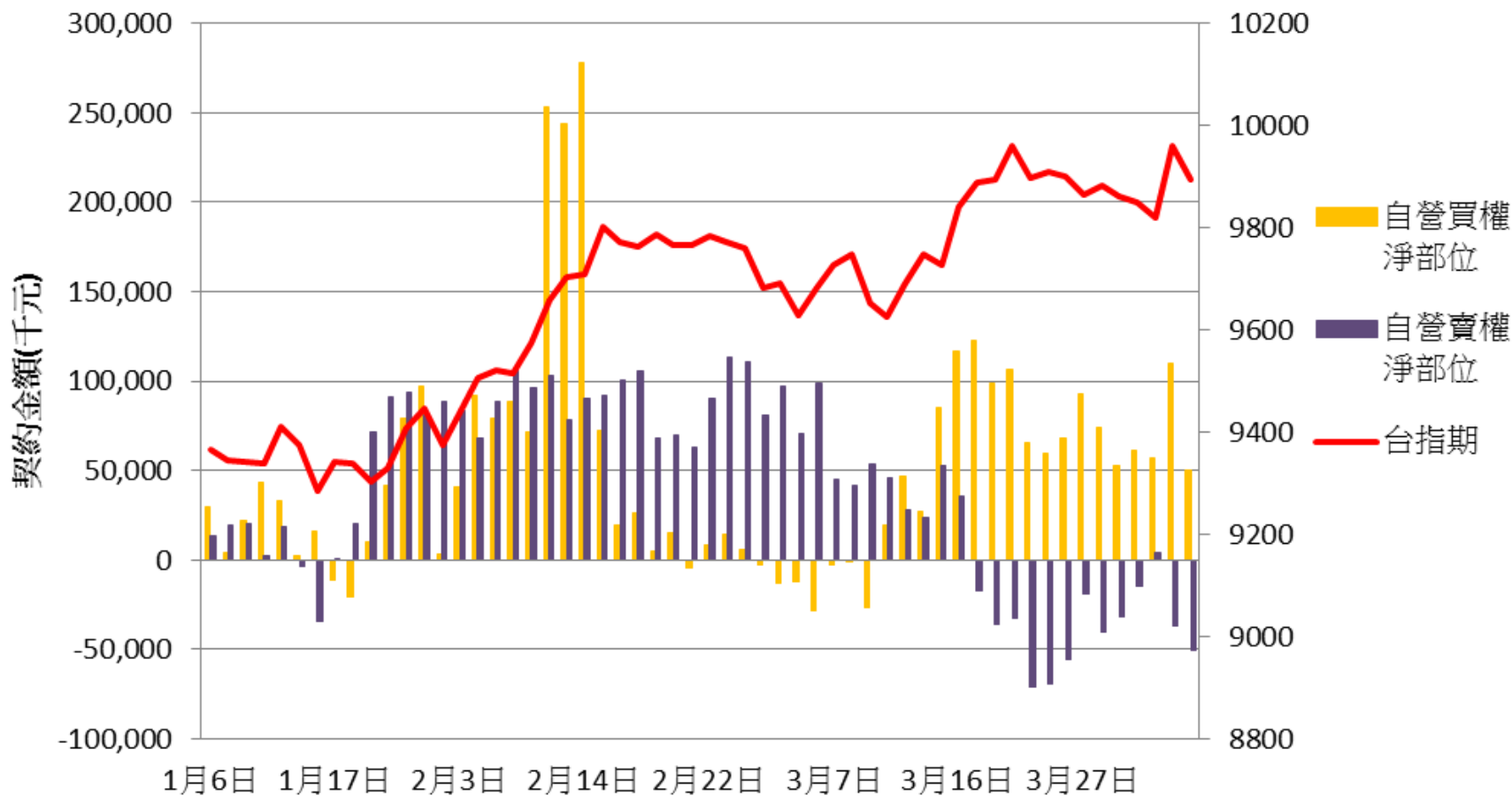
自營台指期與選擇權淨部位契約金額V.S台指期



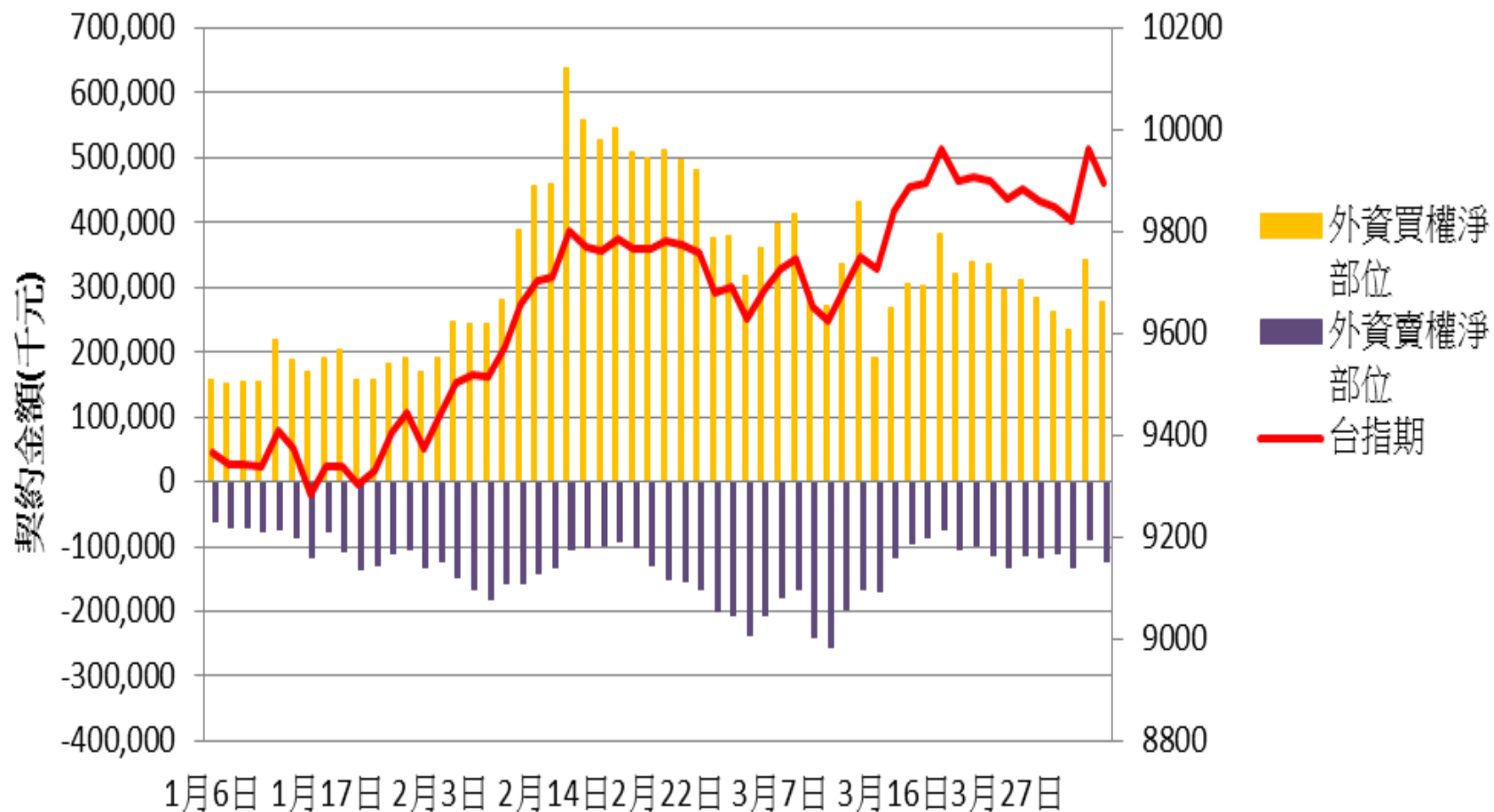
外資台指期與選擇權淨部位契約金額V.S台指期



自營買賣權淨部位契約金額V.S台指期



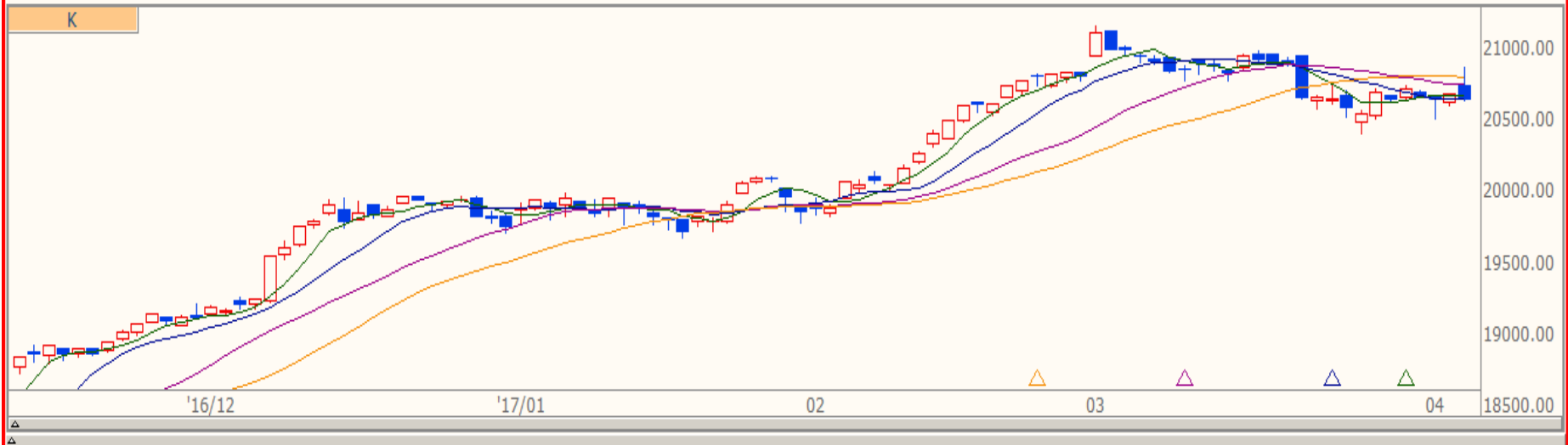
外資買賣權淨部位契約金額V.S台指期





技術分析

DJI 道瓊指數(日) 20648.150 -41.090 -0.20% 16:40:38 開20745.060 高20887.500 低20639.550



技術分析

TWI 加權指數(日) 9897.800 -51.680 -0.52% 13:31:00 開9946.660 高9946.660 低9879.850



