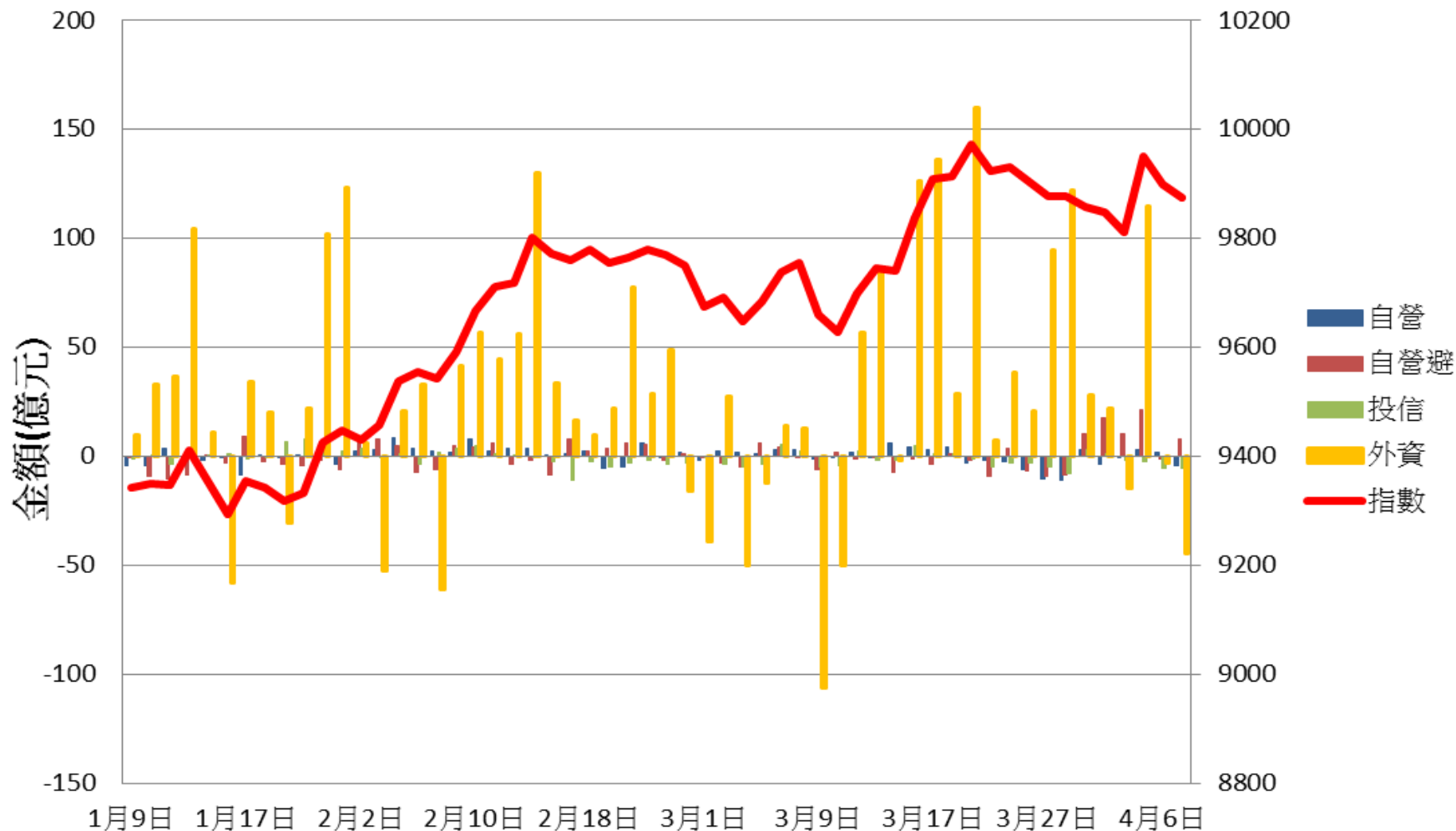
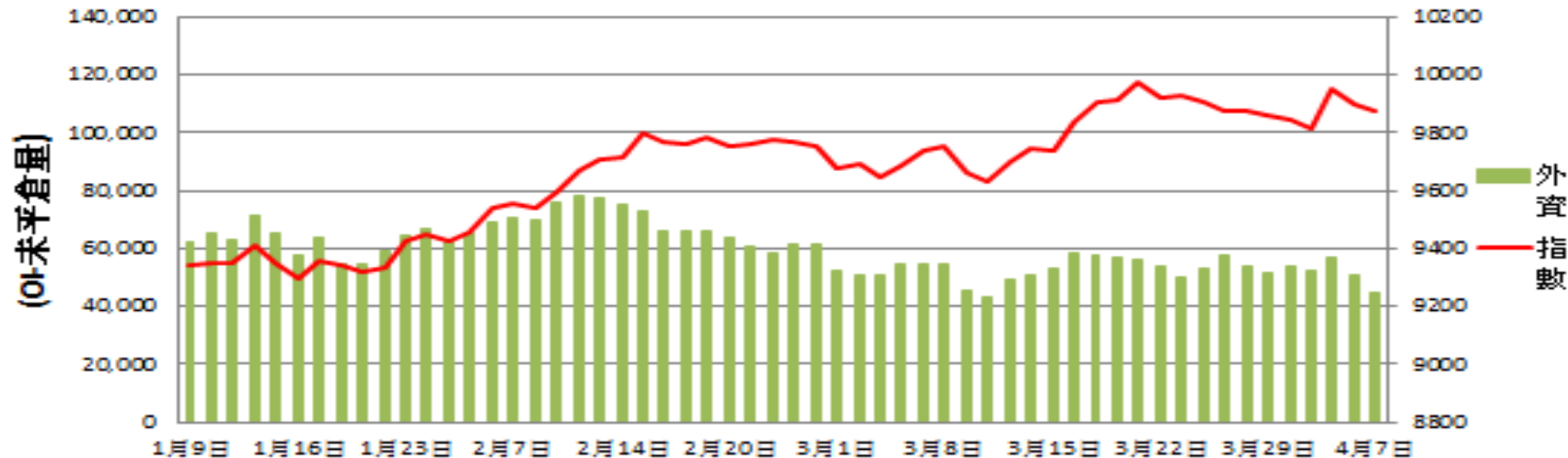


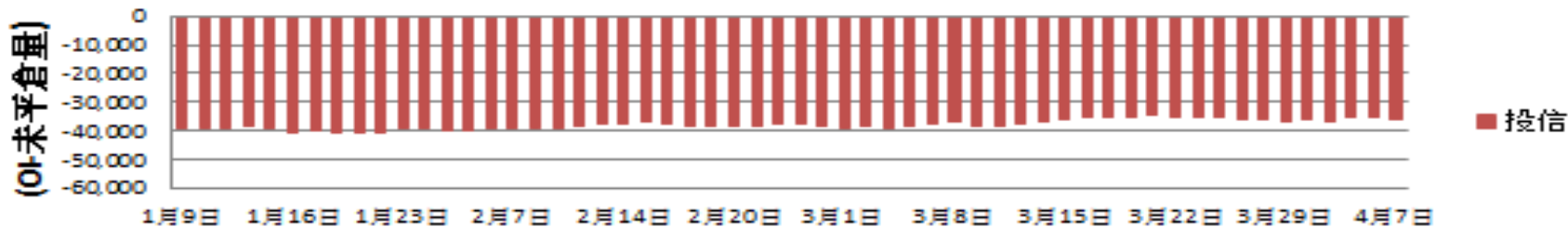
證券三大法人每日買賣超 V.S 加權指數



期貨外資未平倉口數 V.S 加權指數



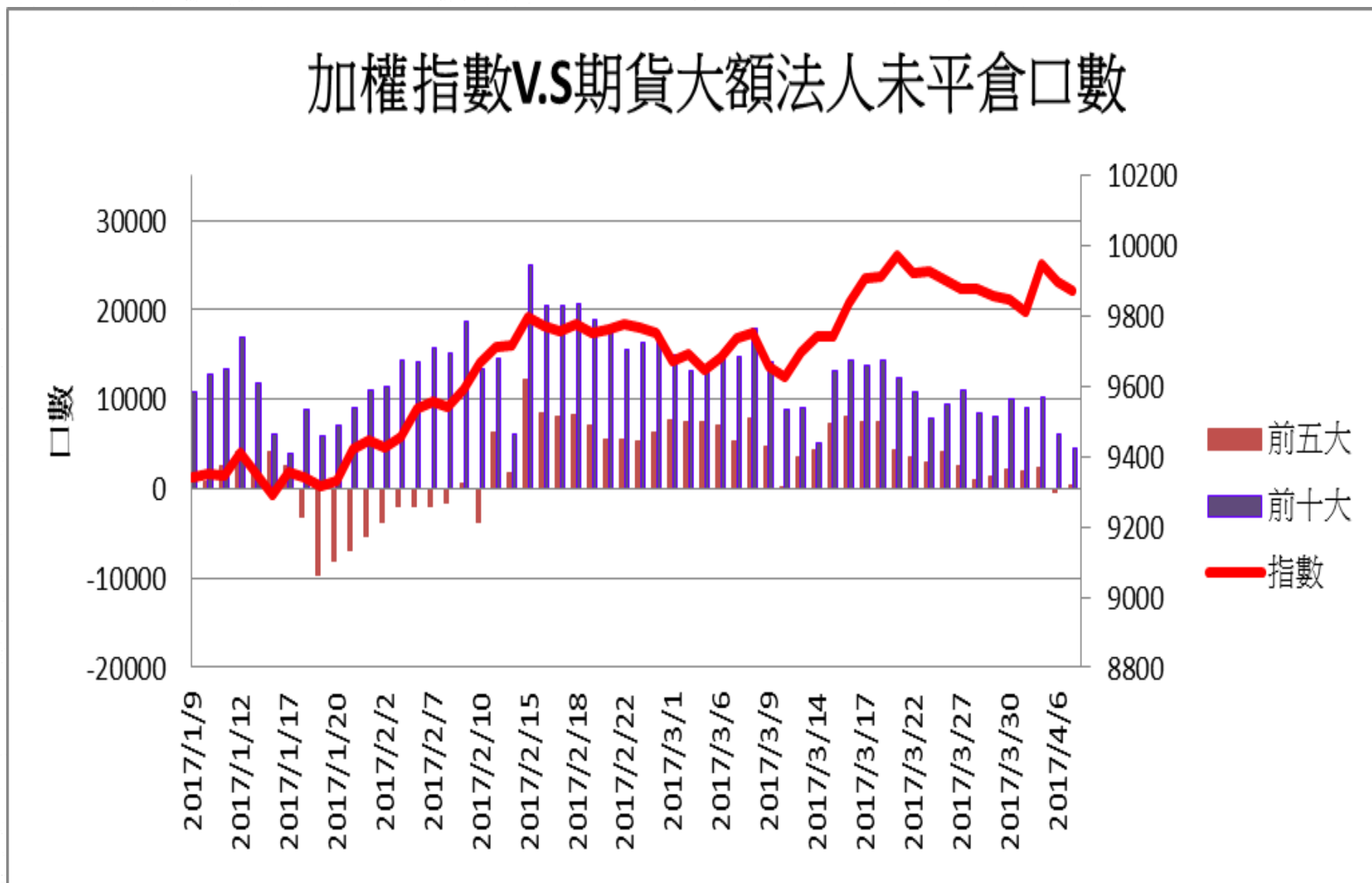
期貨投信未平倉口數



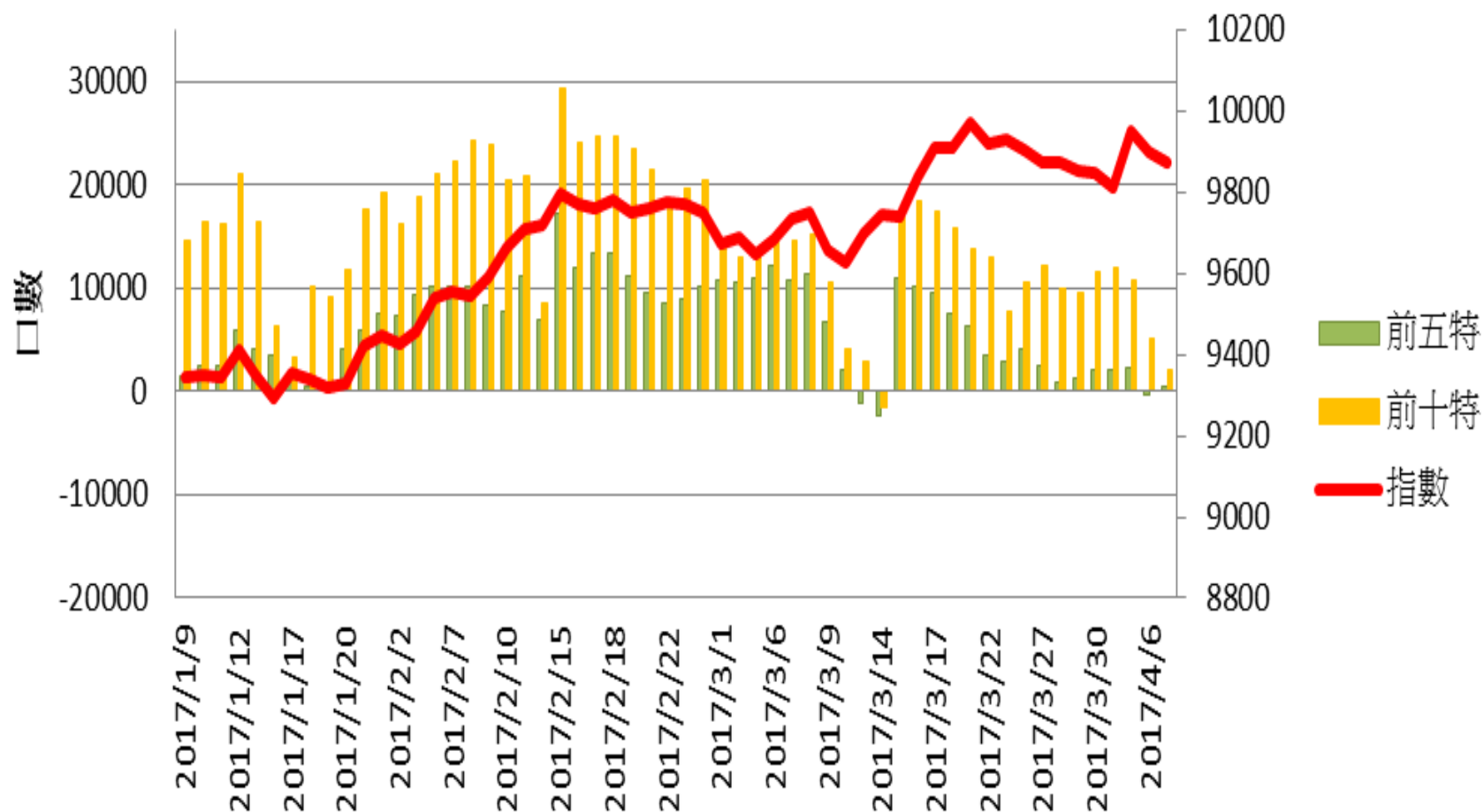
期貨自營未平倉口數



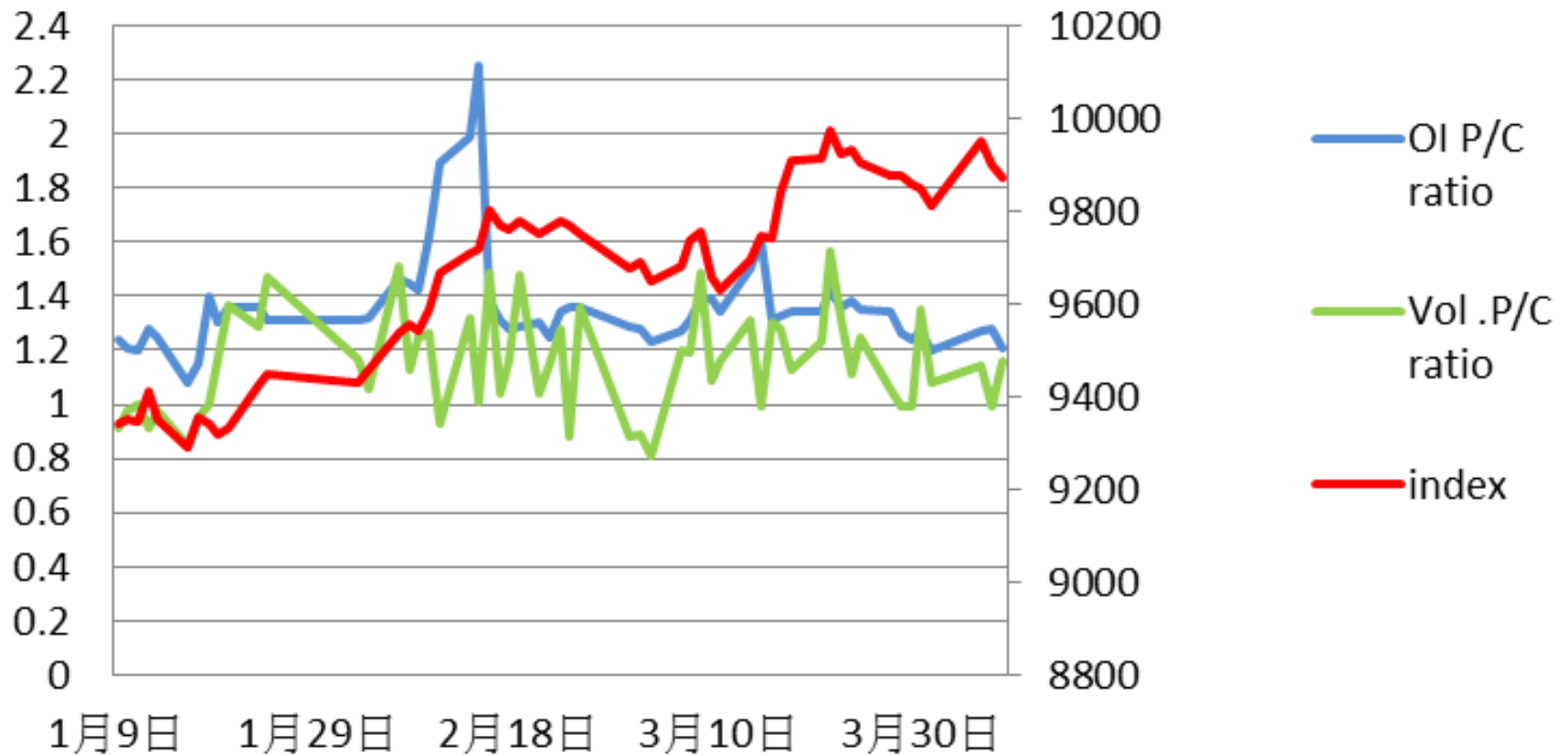
## 加權指數V.S期貨大額法人未平倉口數



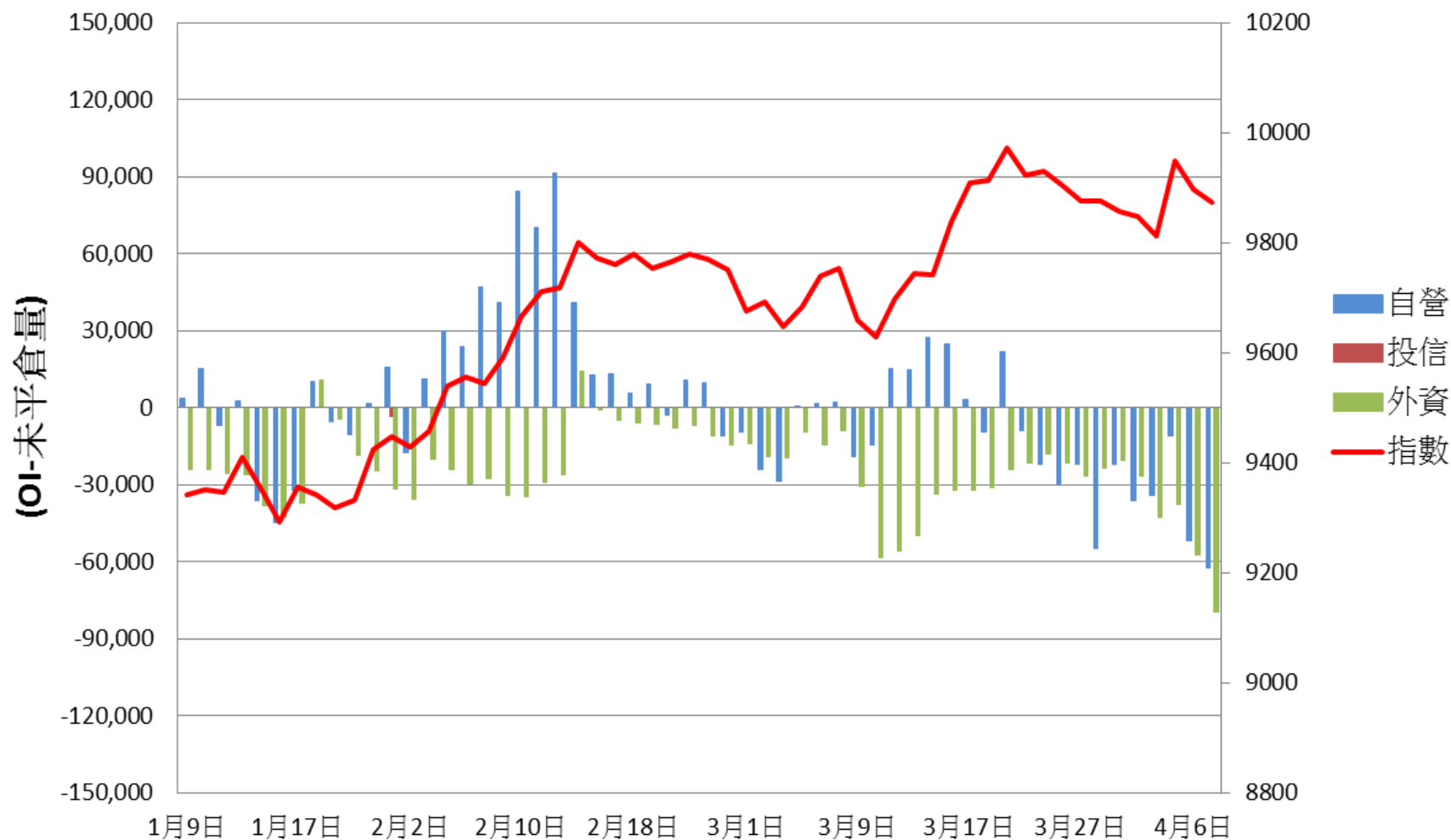
## 加權指數V.S期貨特定法人未平倉口數



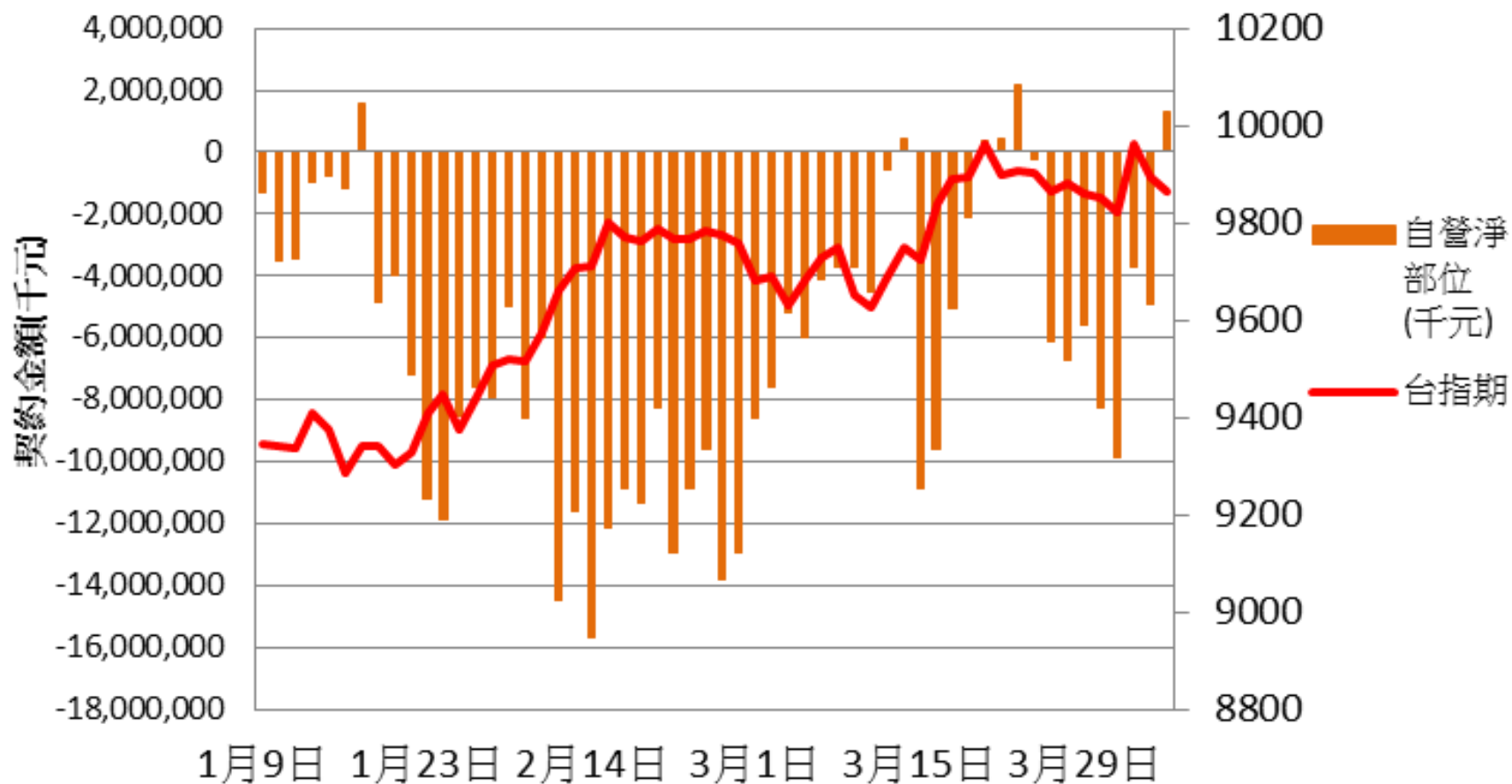
## 加權指數V.S未平倉量P/Cratio V.S 成交量 P/C ratio



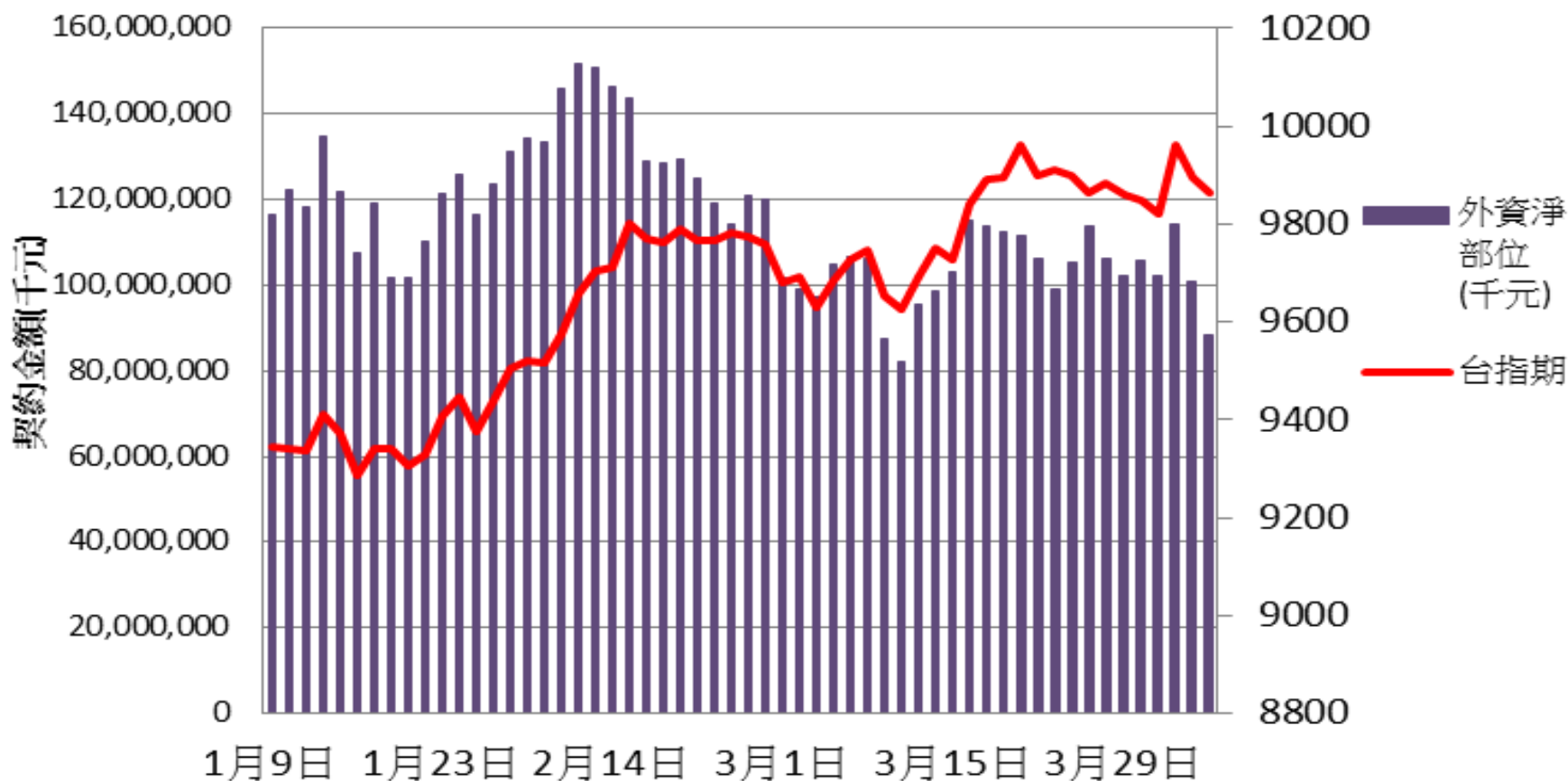
選擇權三大法人未平倉口數V.S 加權指數



### 自營台指期與選擇權淨部位契約金額V.S台指期

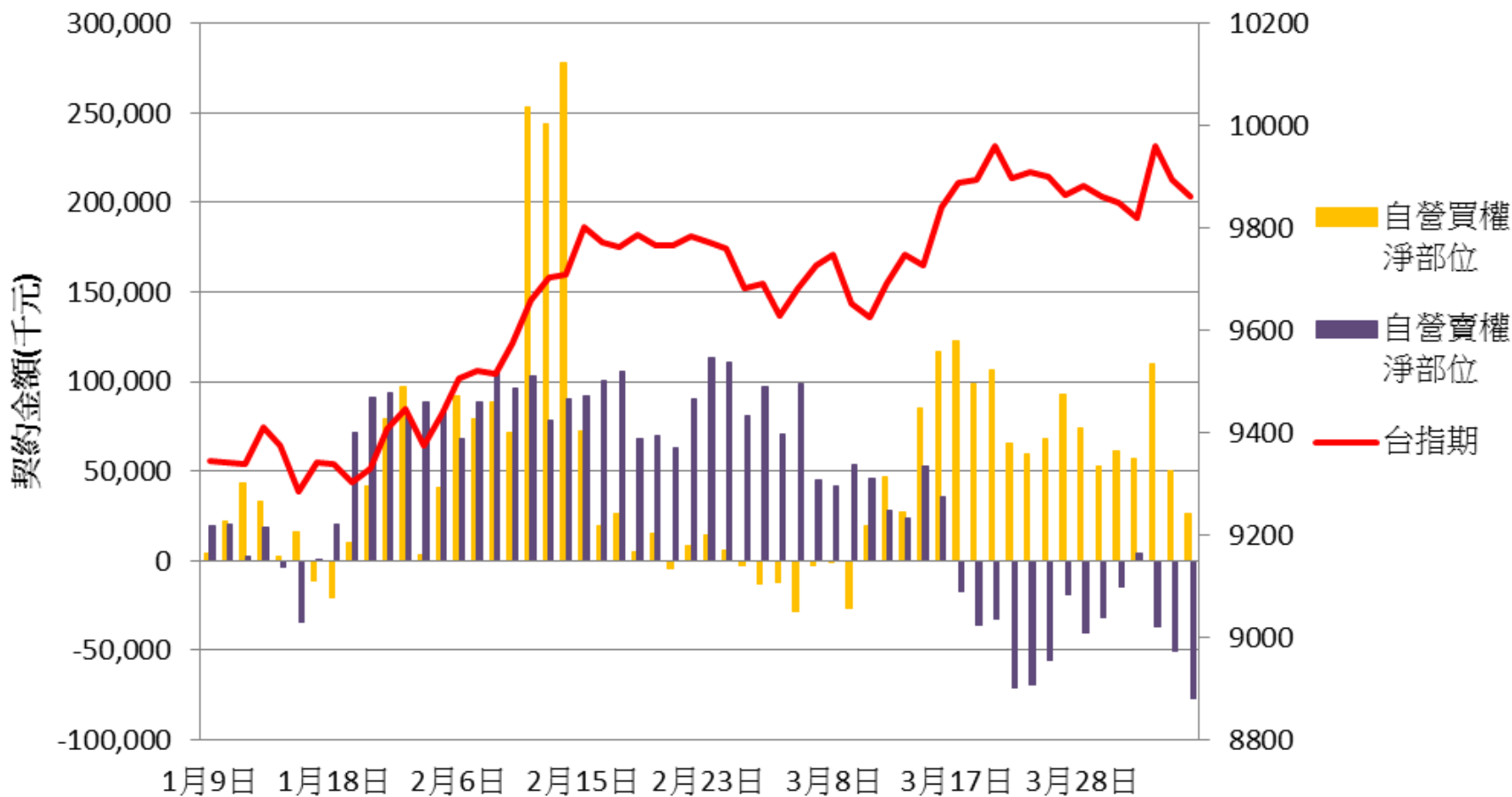


### 外資台指期與選擇權淨部位契約金額v.s台指期

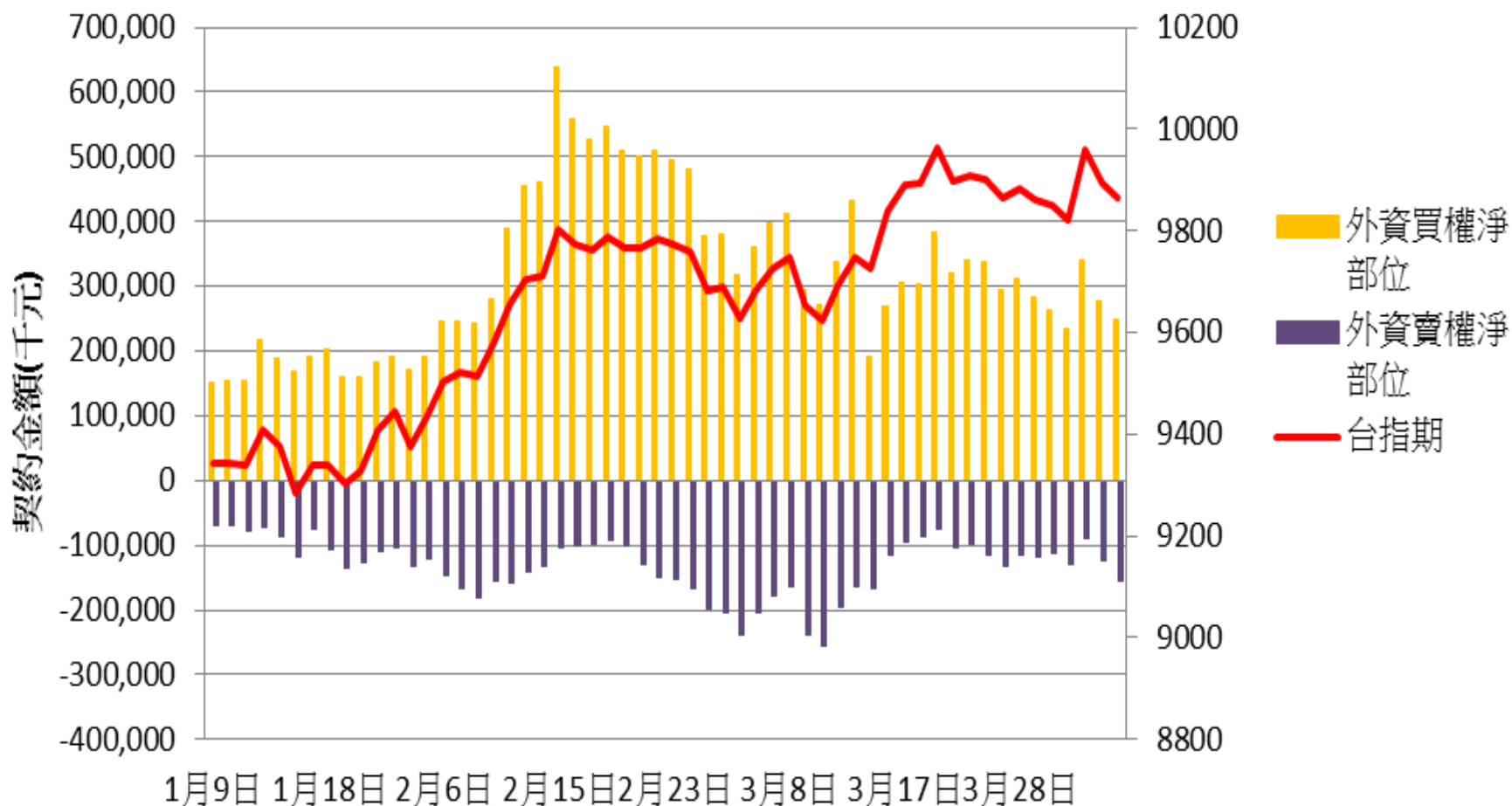




自營買賣權淨部位契約金額V.S台指期



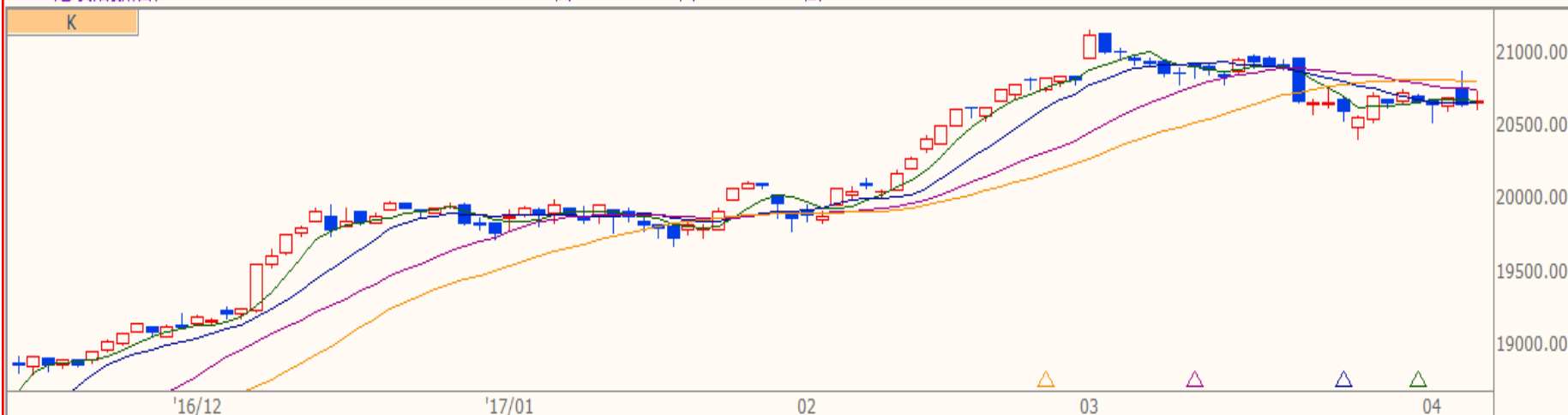
外資買賣權淨部位契約金額V.S台指期





技術分析

DJI 道瓊指數(日) 20662.950 +14.800 +0.07% 16:45:21 開20653.770 高20746.460 低20612.280



技術分析

TWI 加權指數(日) 9873.370 -24.430 -0.25% 13:31:00 開9892.980 高9900.880 低9788.520

