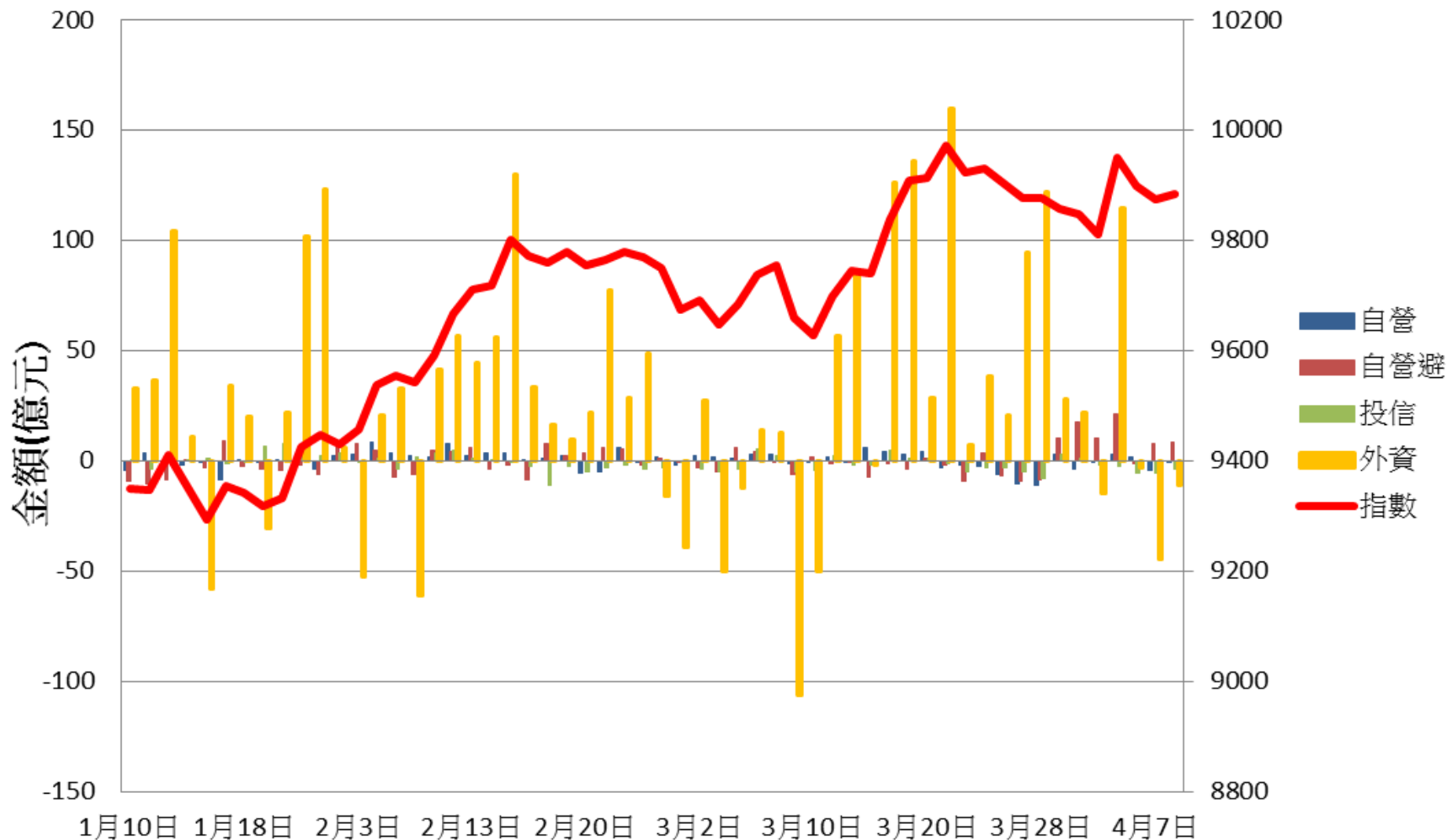
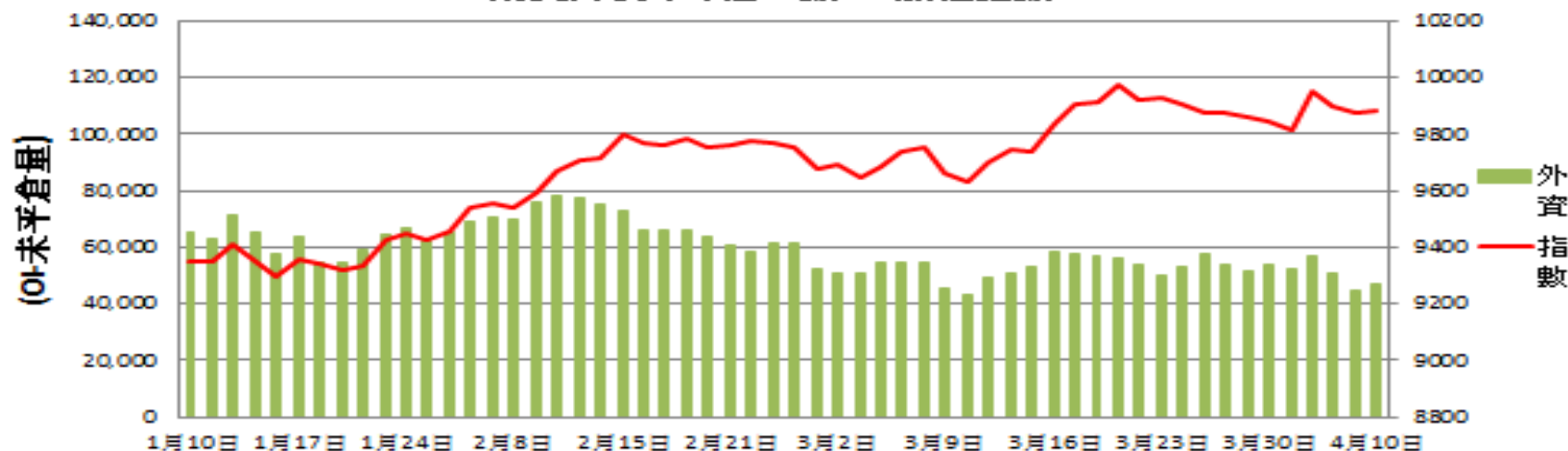


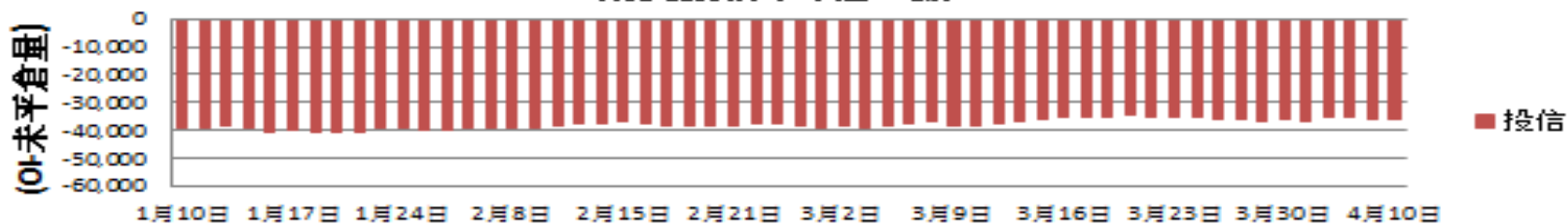
證券三大法人每日買賣超 V.S 加權指數



期貨外資未平倉口數 V.S 加權指數



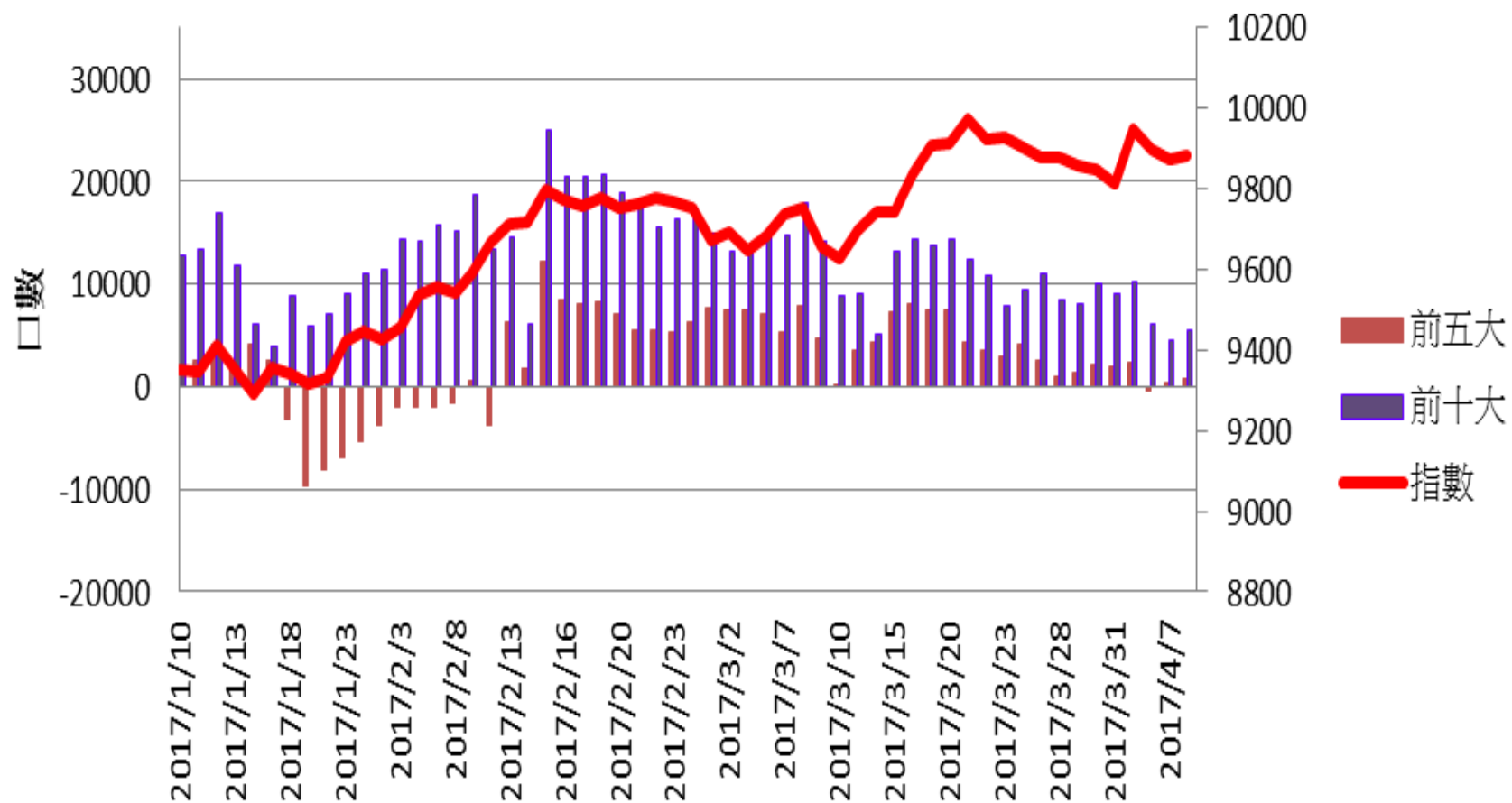
期貨投信未平倉口數



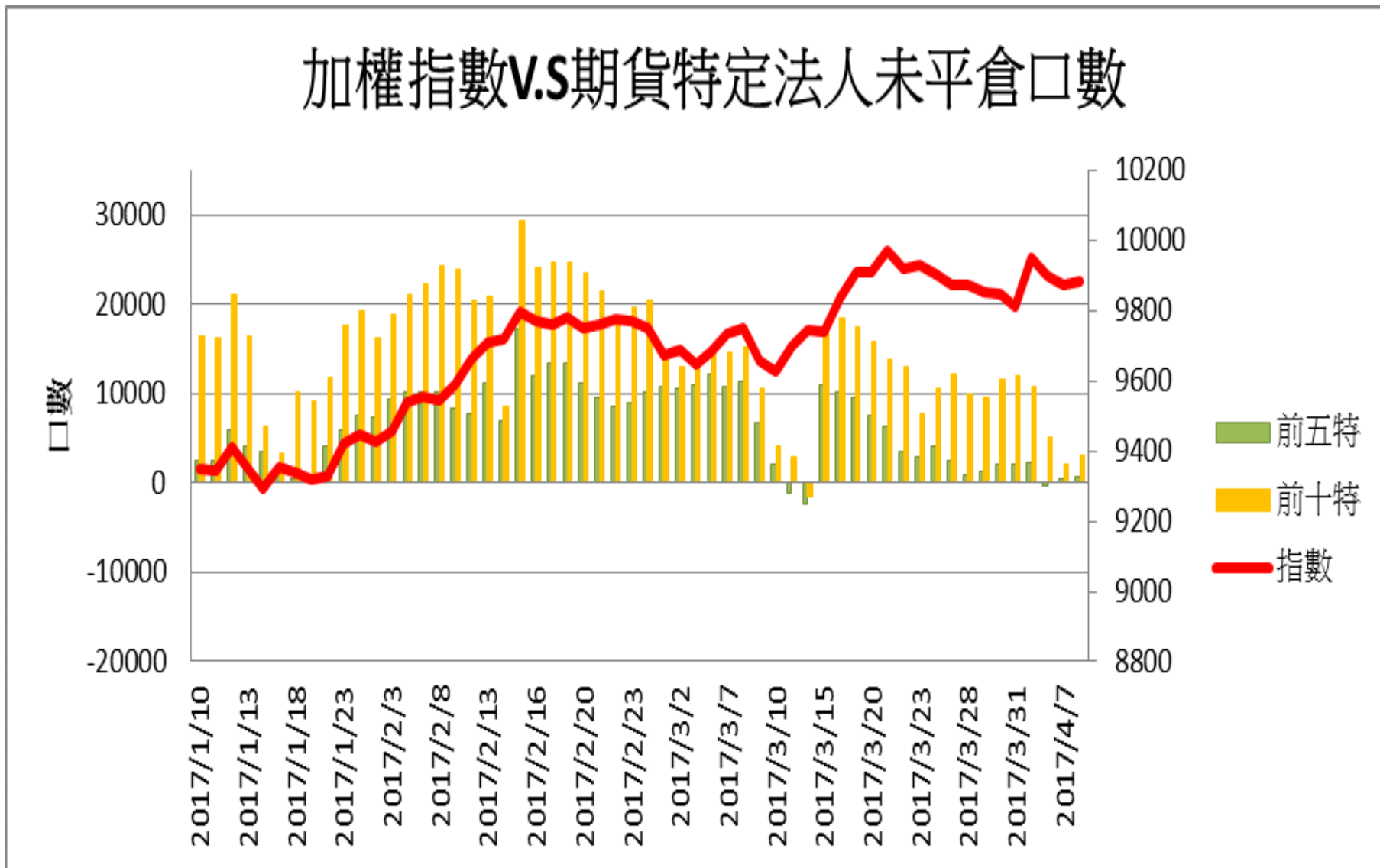
期貨自營未平倉口數



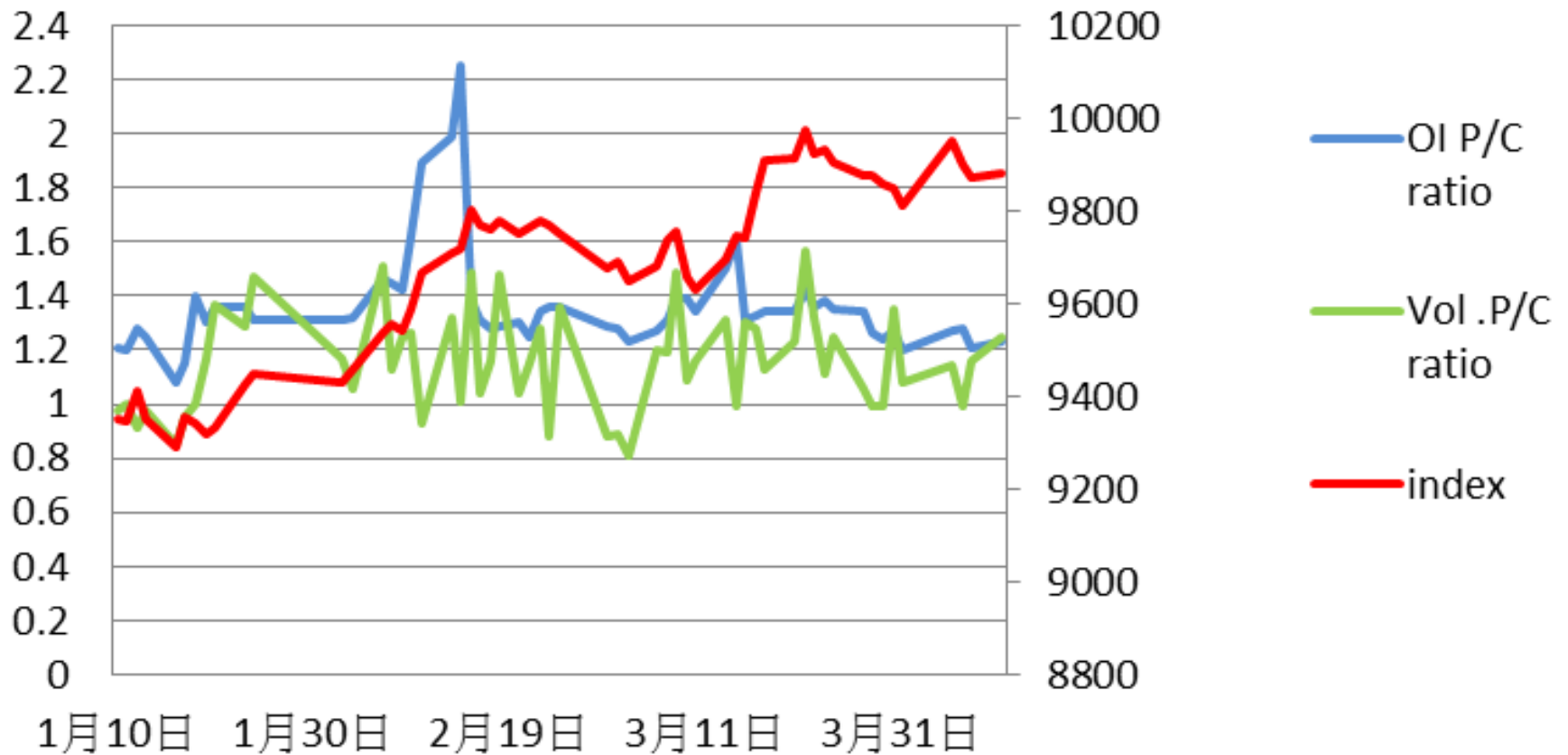
加權指數V.S期貨大額法人未平倉口數



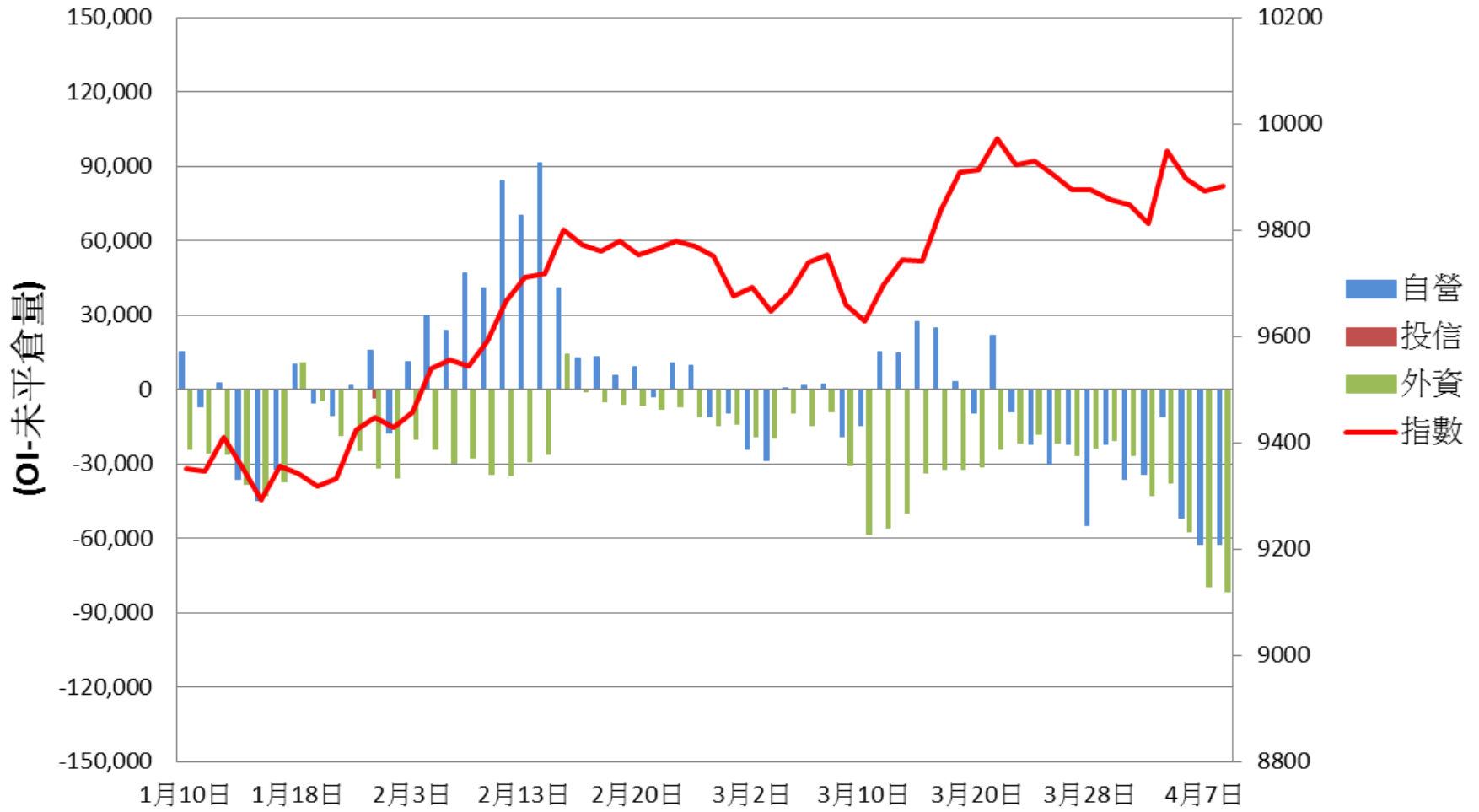
加權指數V.S期貨特定法人未平倉口數



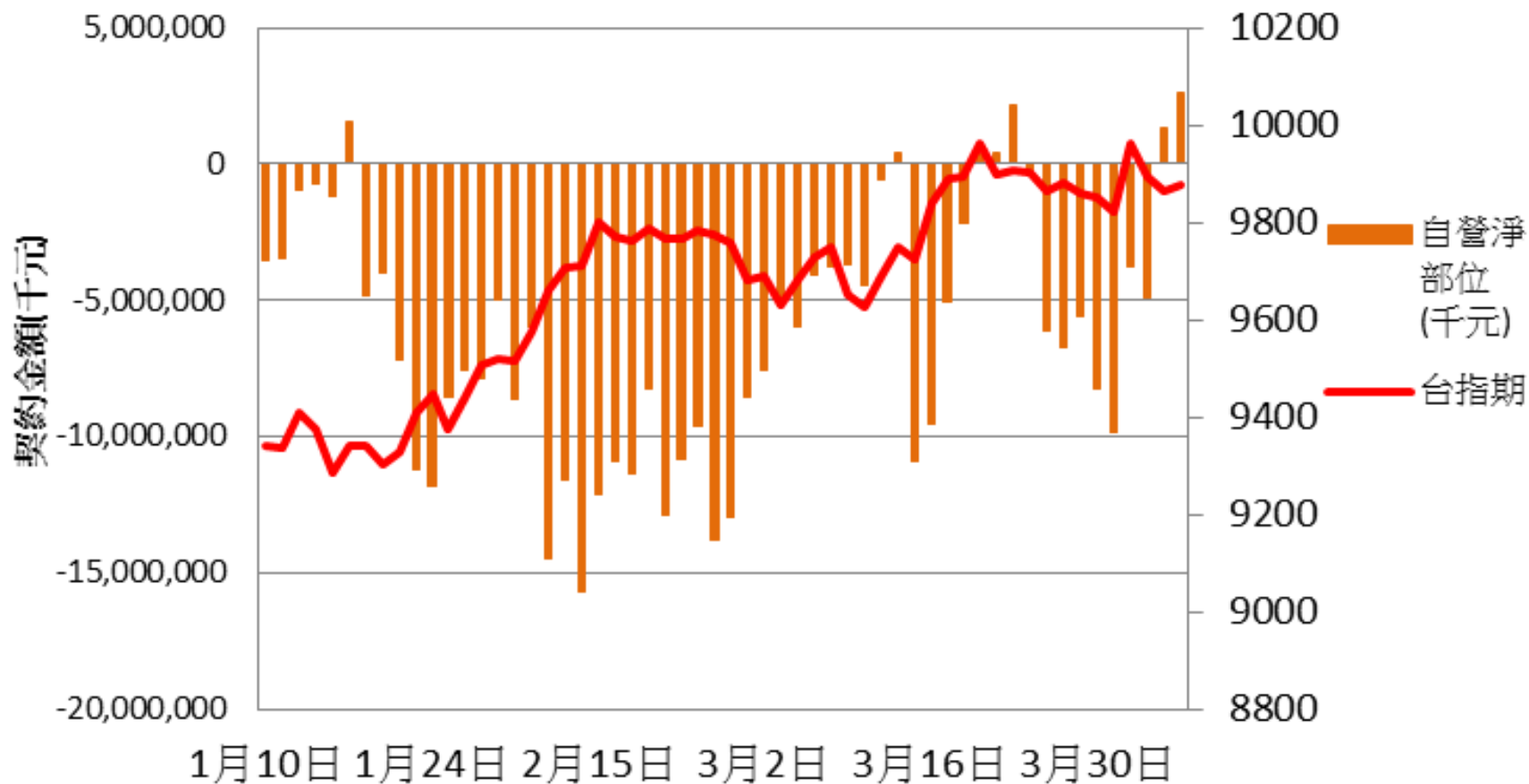
加權指數V.S未平倉量P/Cratio V.S 成交量 P/C ratio



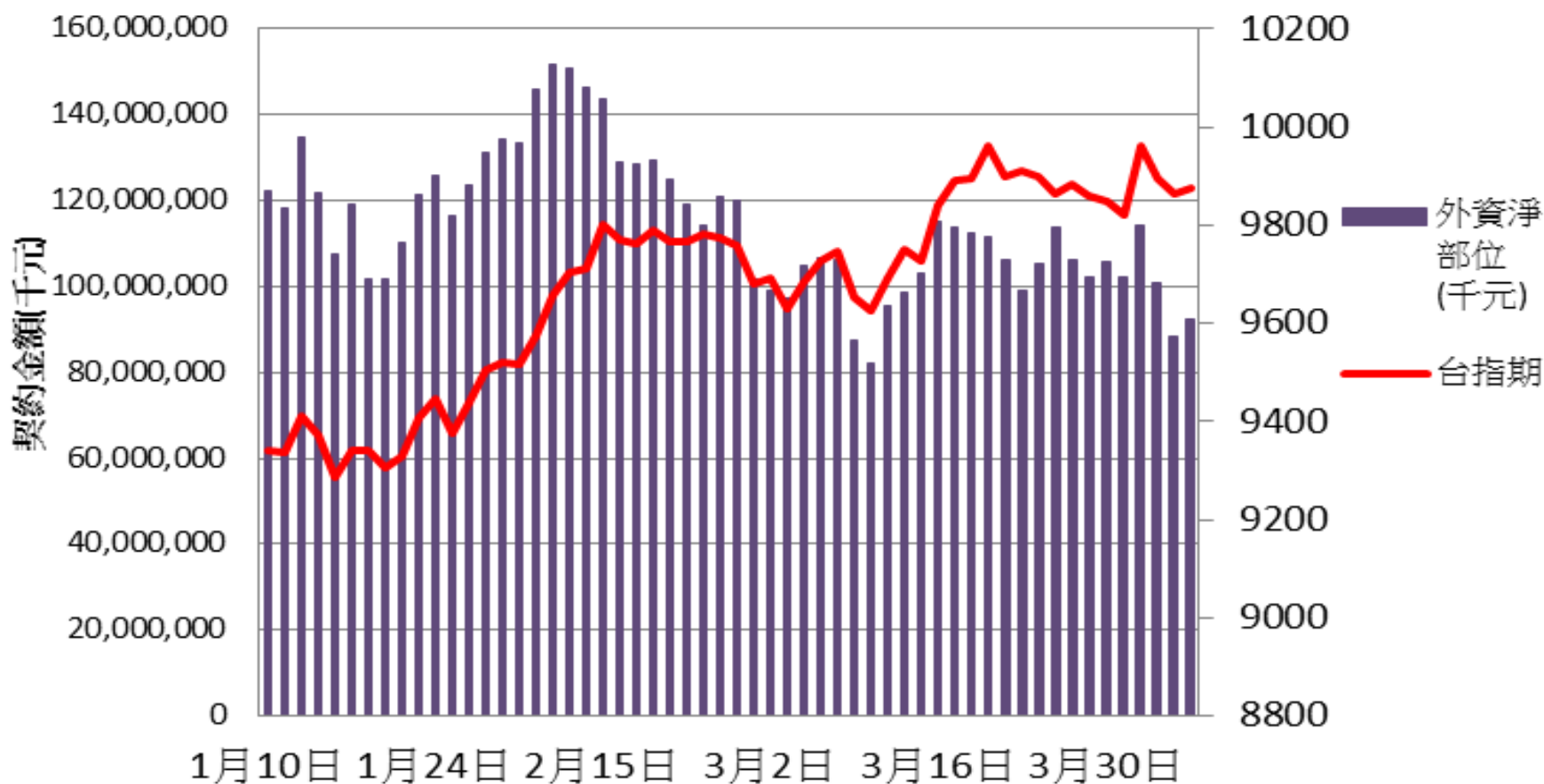
選擇權三大法人未平倉口數 V.S 加權指數



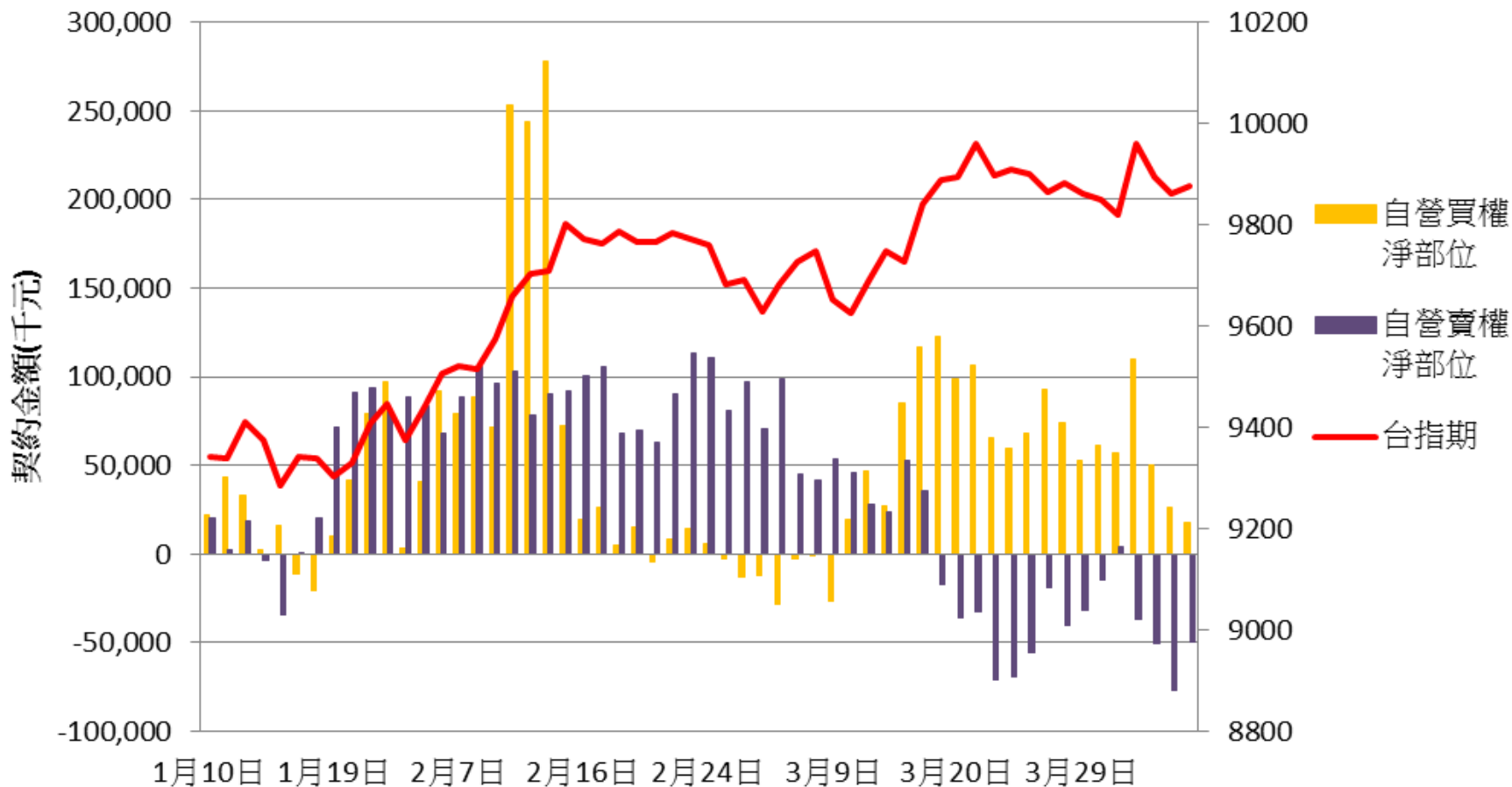
自營台指期與選擇權淨部位契約金額v.s台指期



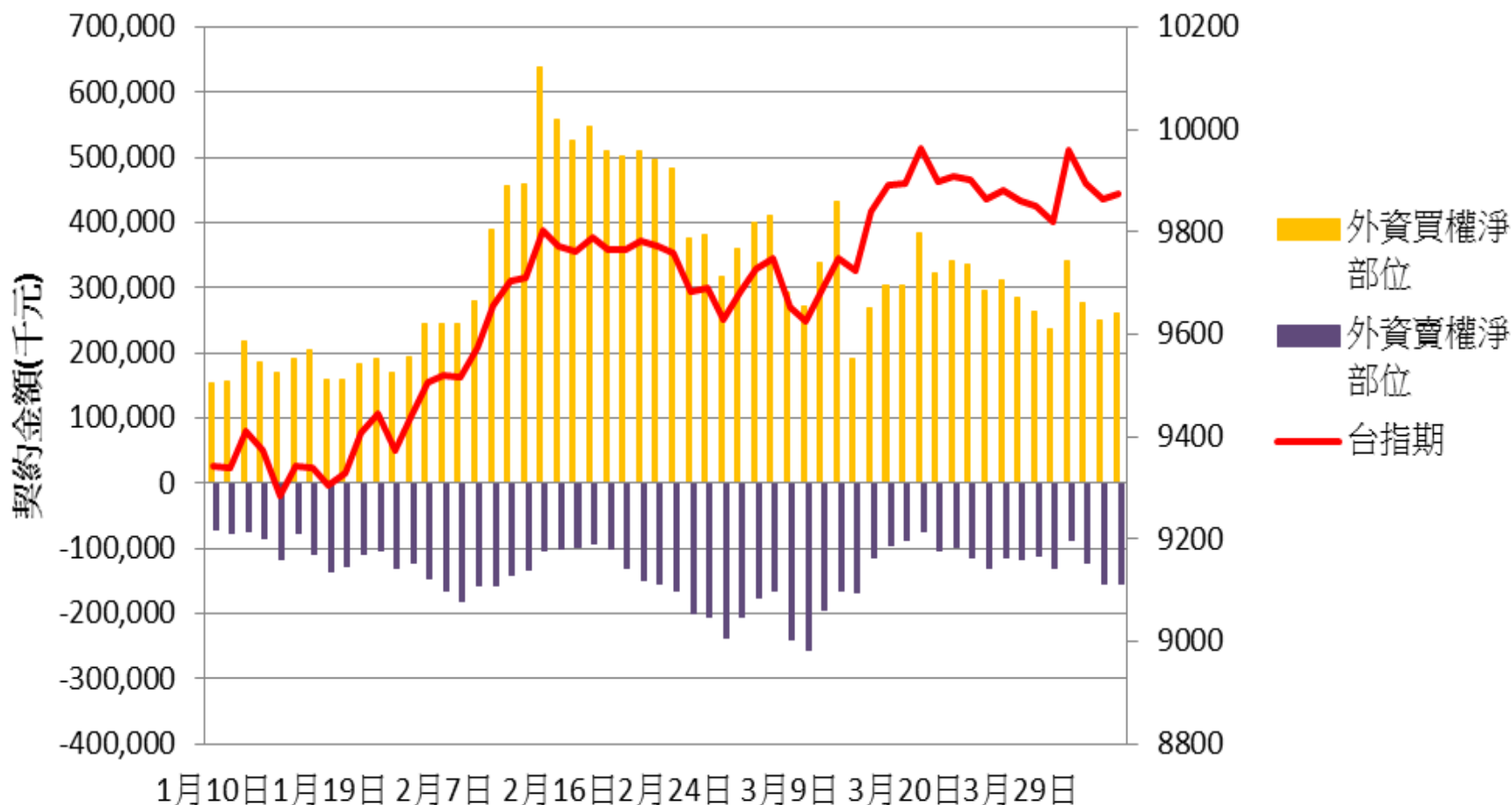
外資台指期與選擇權淨部位契約金額V.S台指期



自營買賣權淨部位契約金額V.S台指期



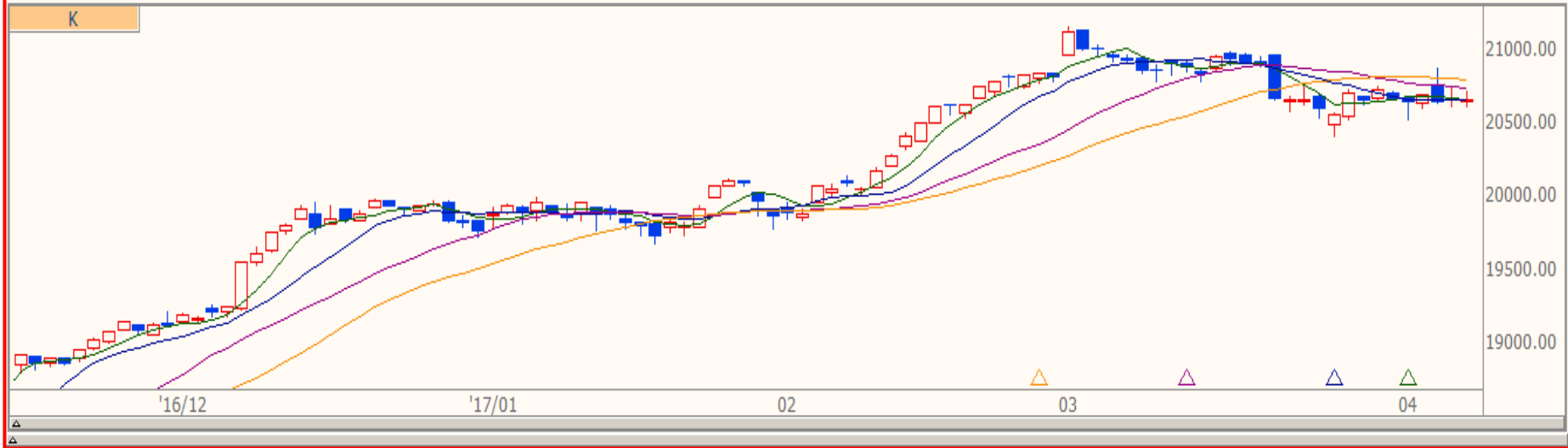
外資買賣權淨部位契約金額V.S台指期





技術分析

DJI 道瓊指數(日) 20656.100 -6.850 -0.03% 16:44:21 開20647.810 高20726.070 低20606.950



技術分析

TWI 加權指數(日) 9882.540 +9.170 +0.09% 13:31:00 開9880.290 高9898.640 低9859.030

