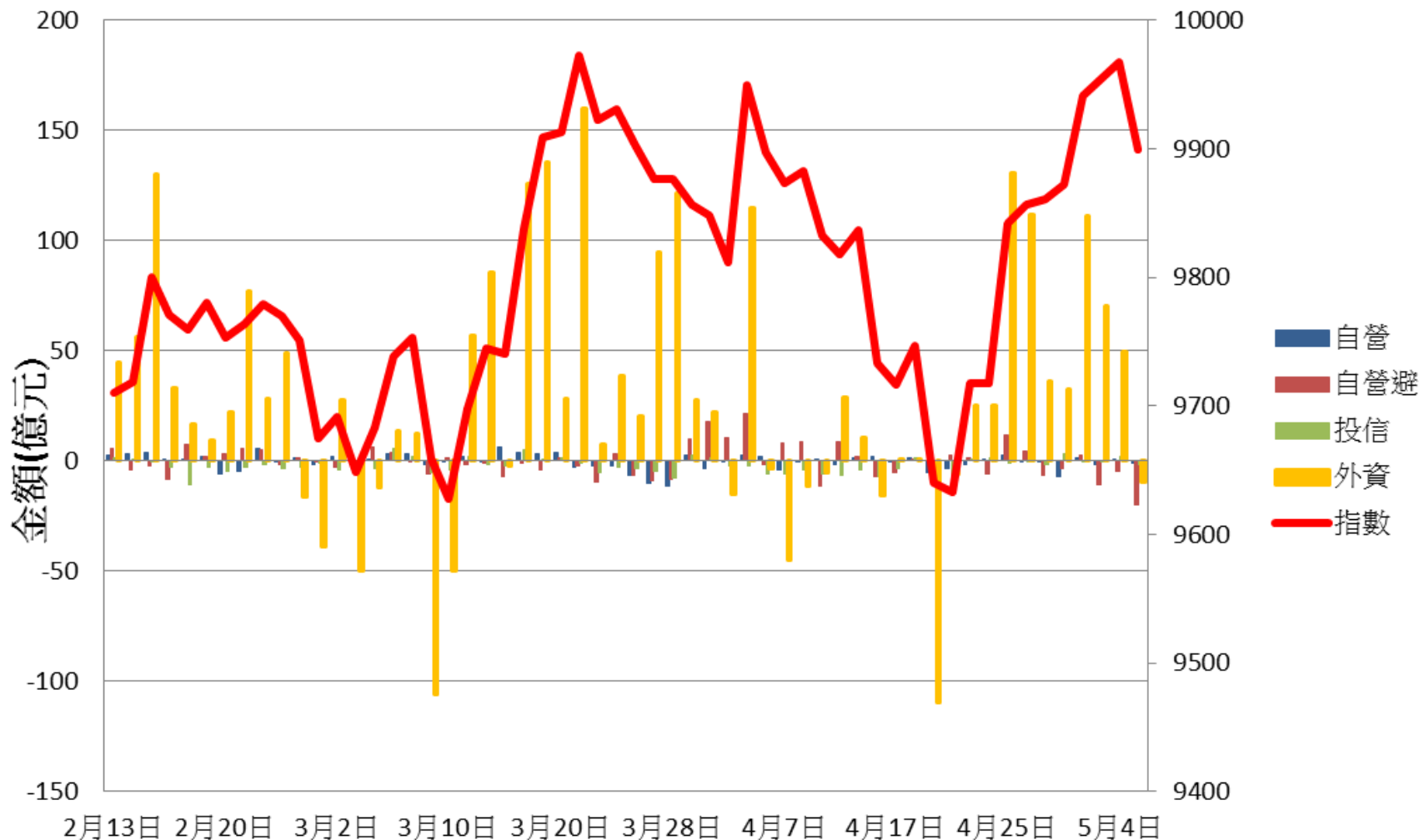
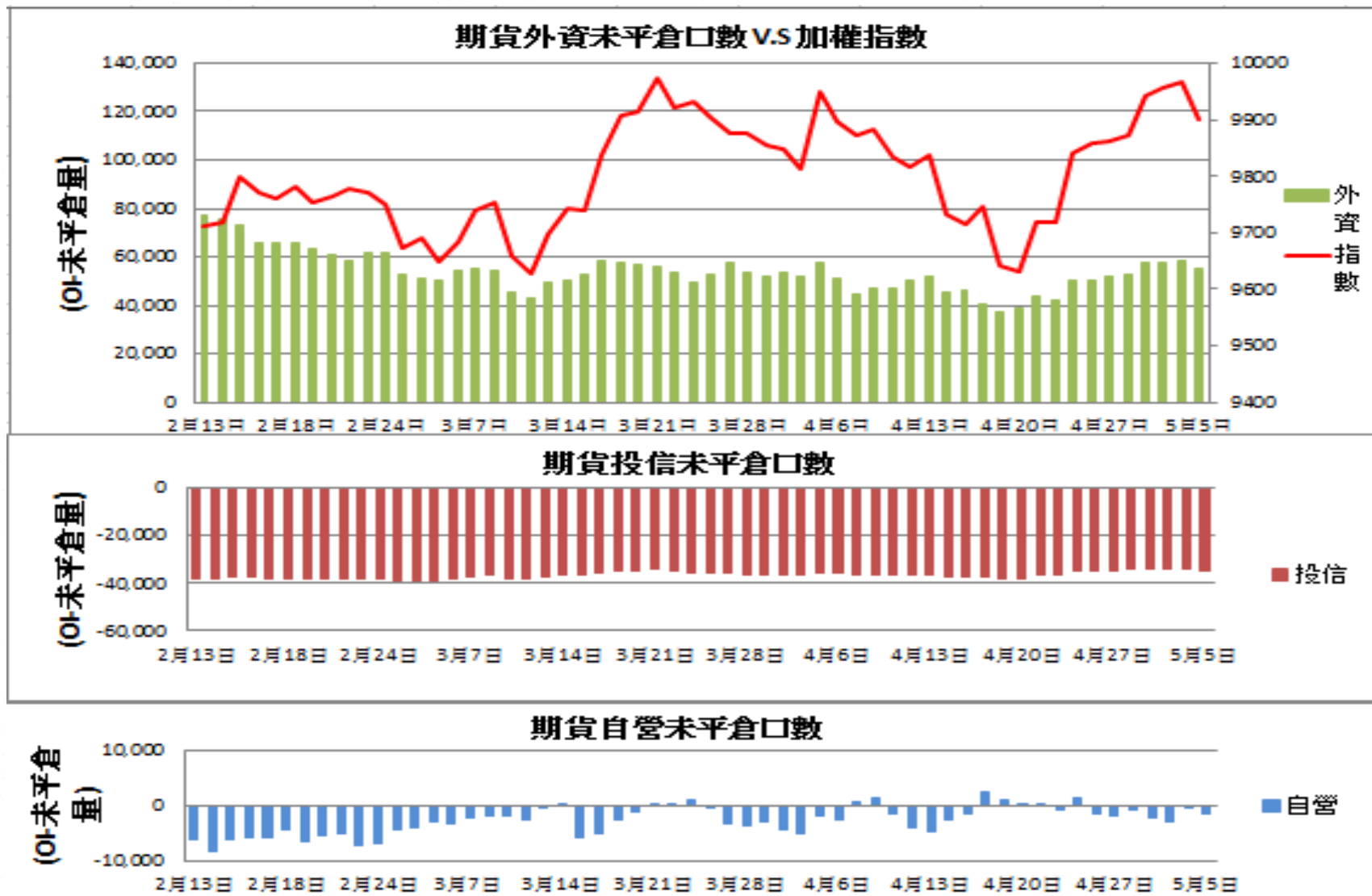
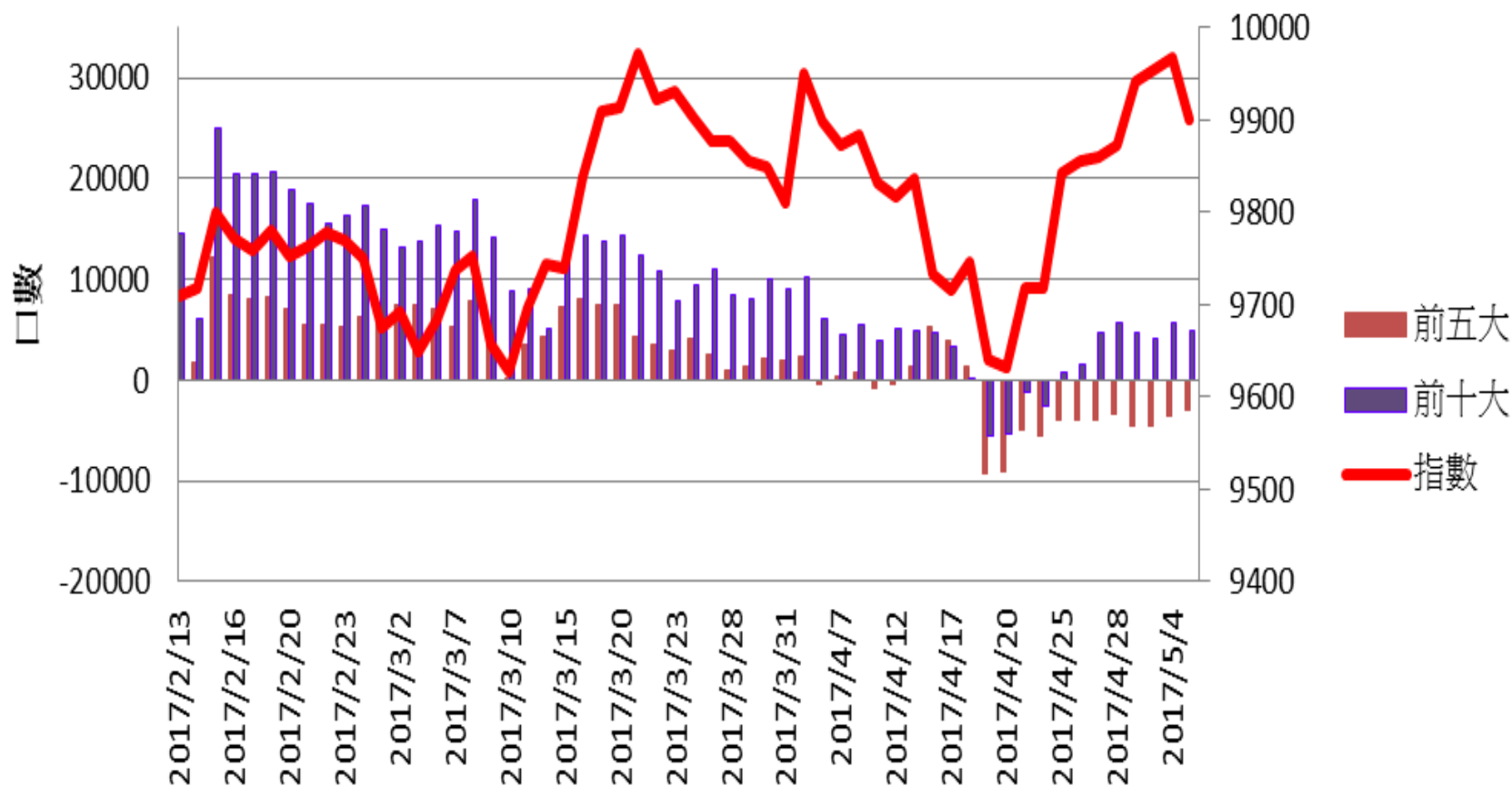


證券三大法人每日買賣超 V.S 加權指數

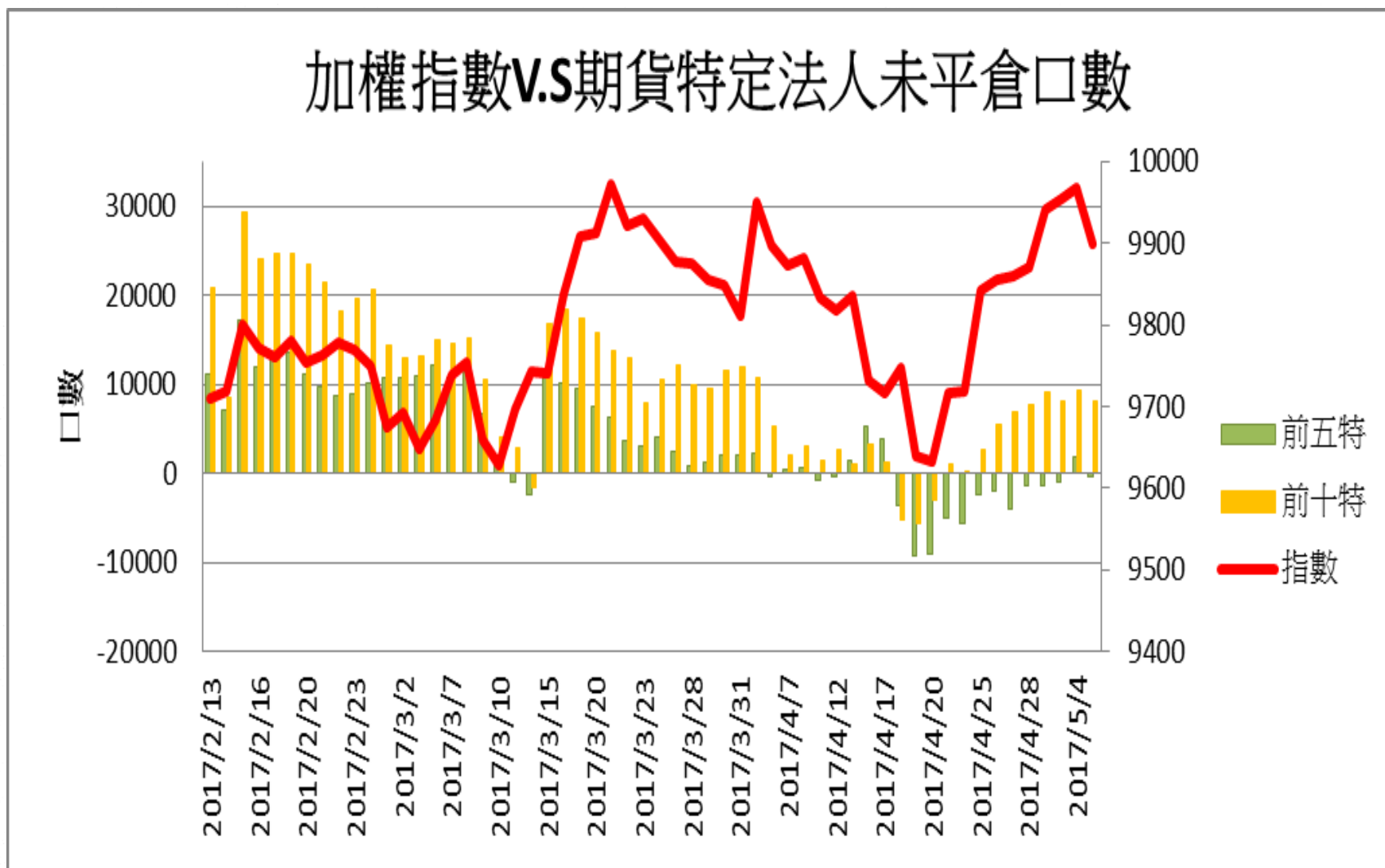




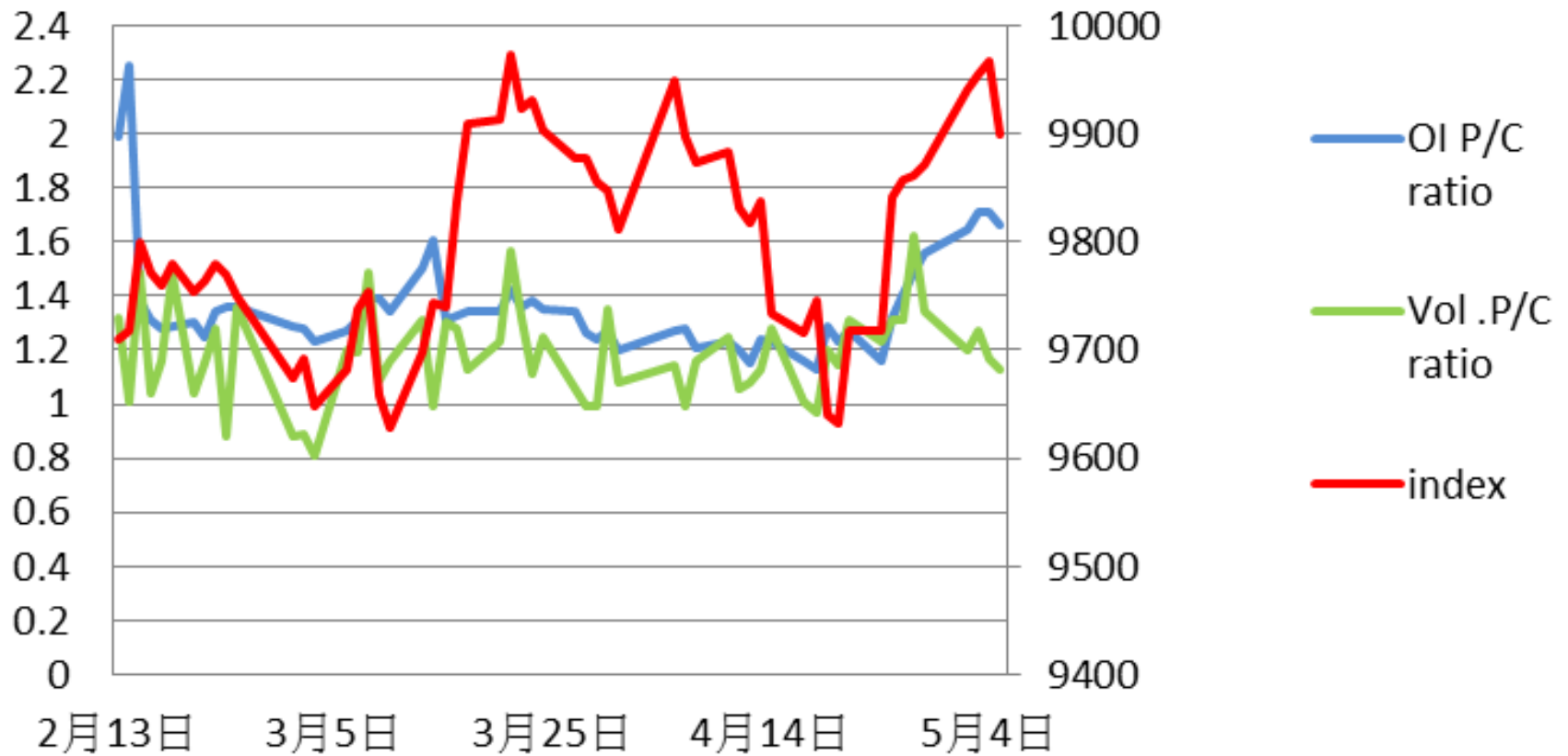
加權指數V.S期貨大額法人未平倉口數



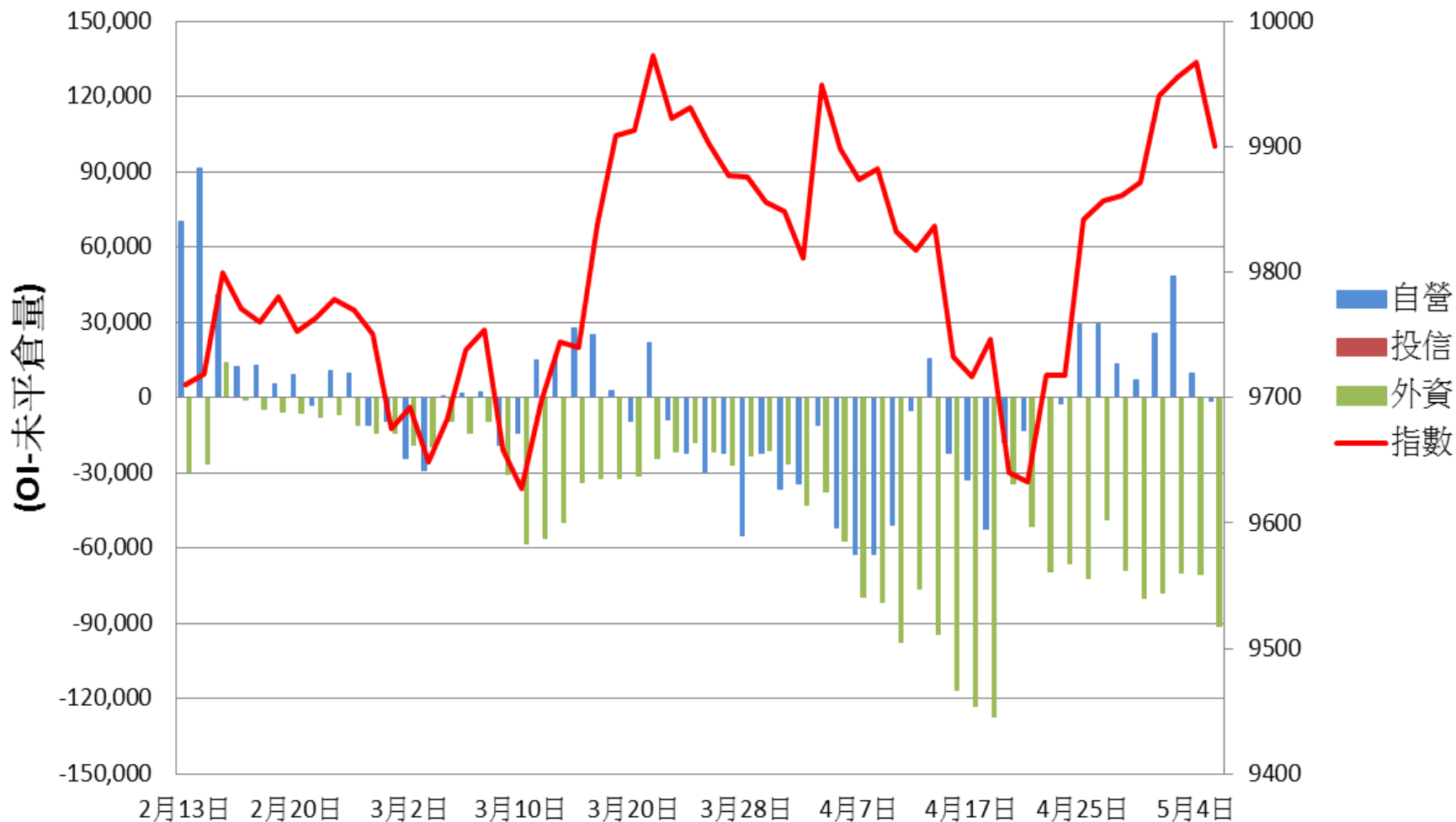
加權指數V.S期貨特定法人未平倉口數



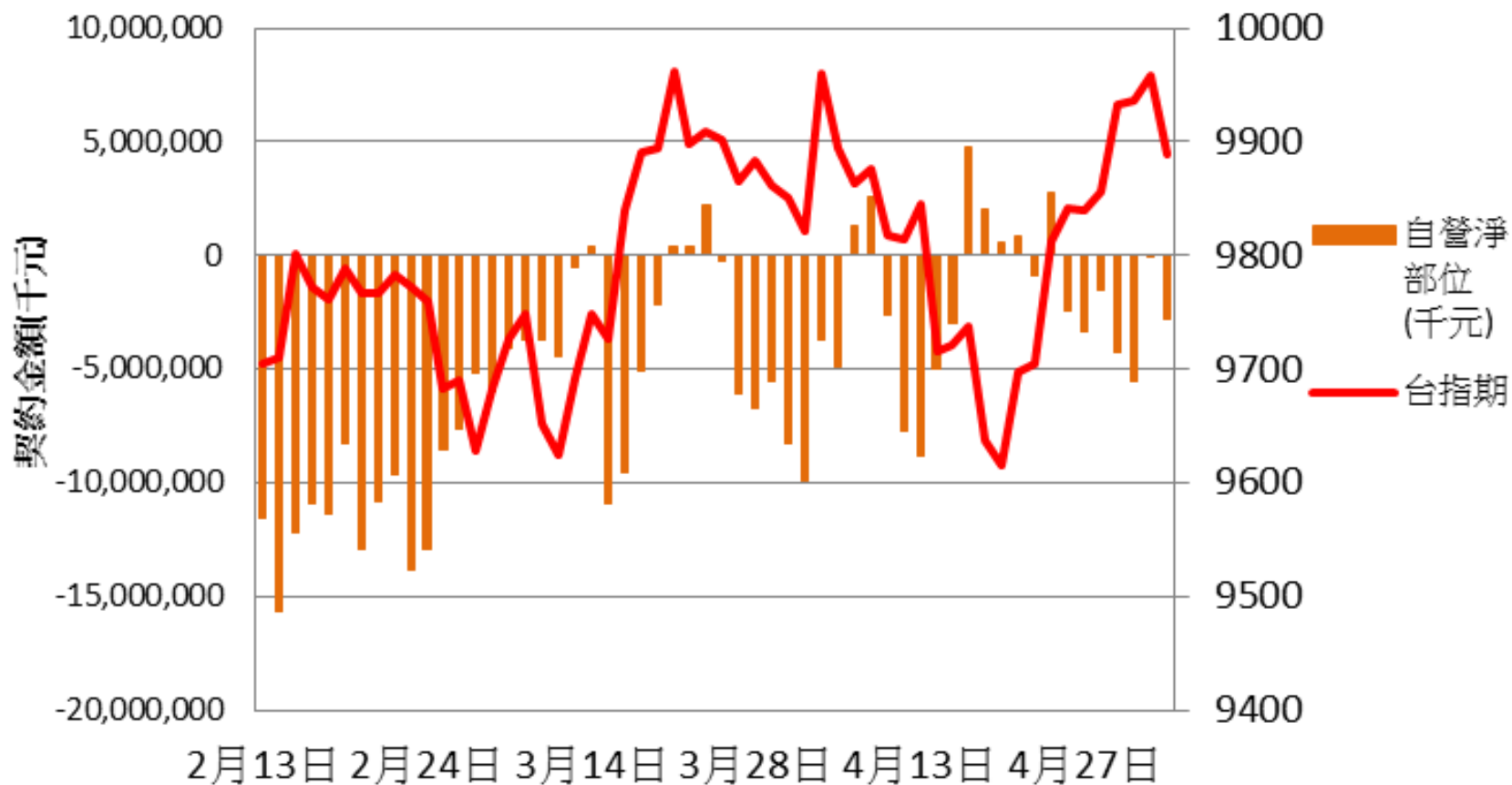
加權指數V.S未平倉量P/Cratio V.S 成交量 P/C ratio



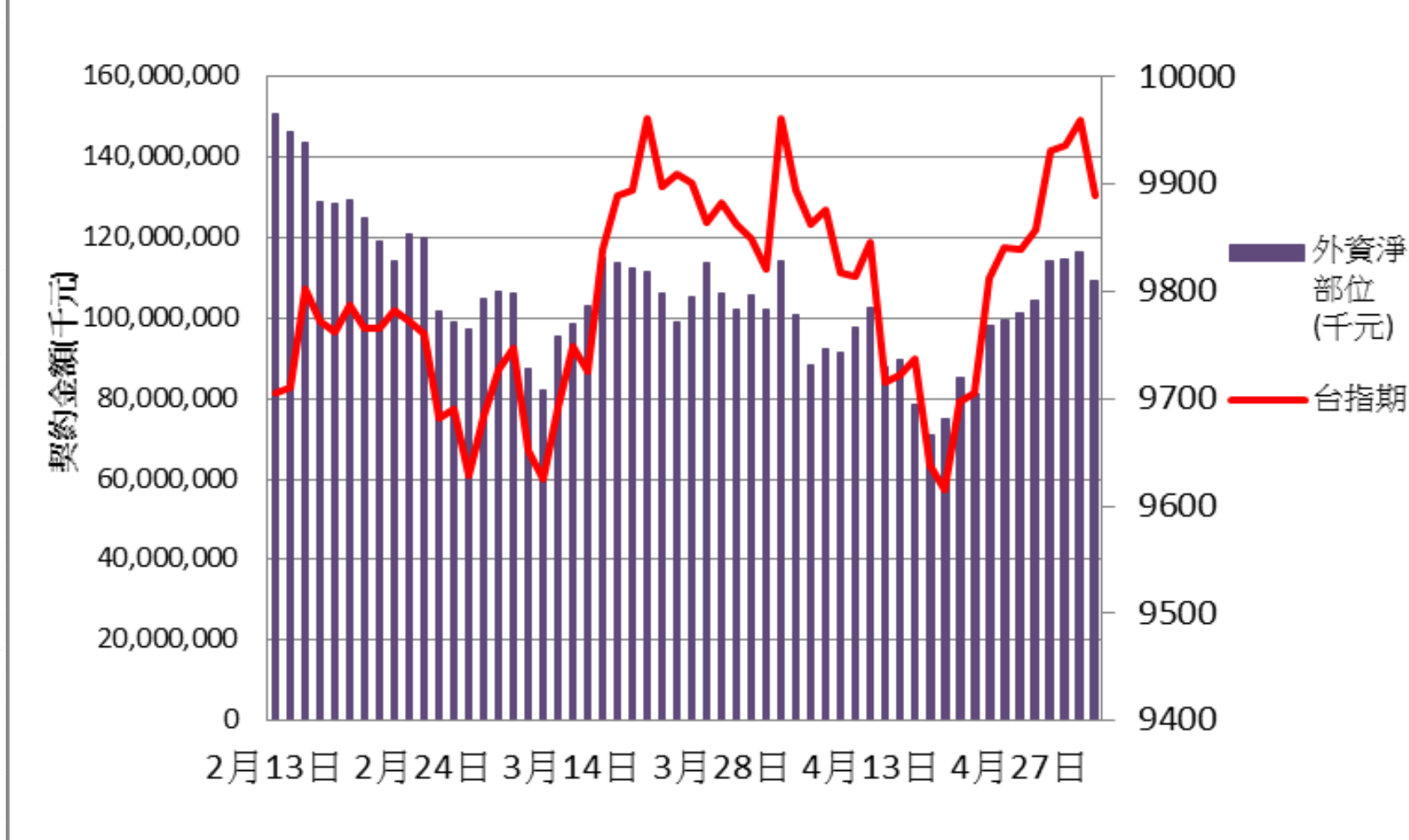
選擇權三大法人未平倉口數 v.s 加權指數



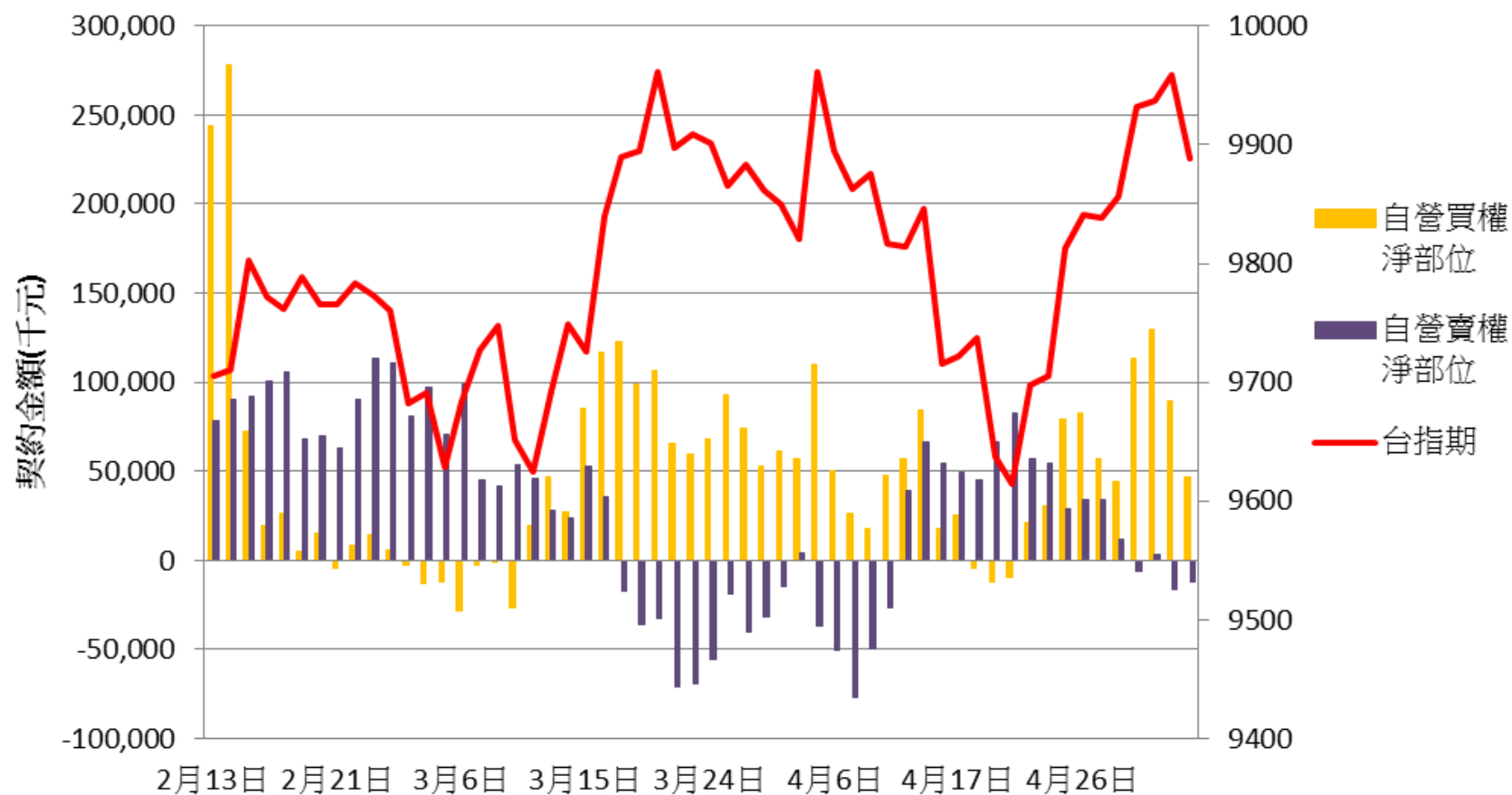
自營台指期與選擇權淨部位契約金額V.S台指期



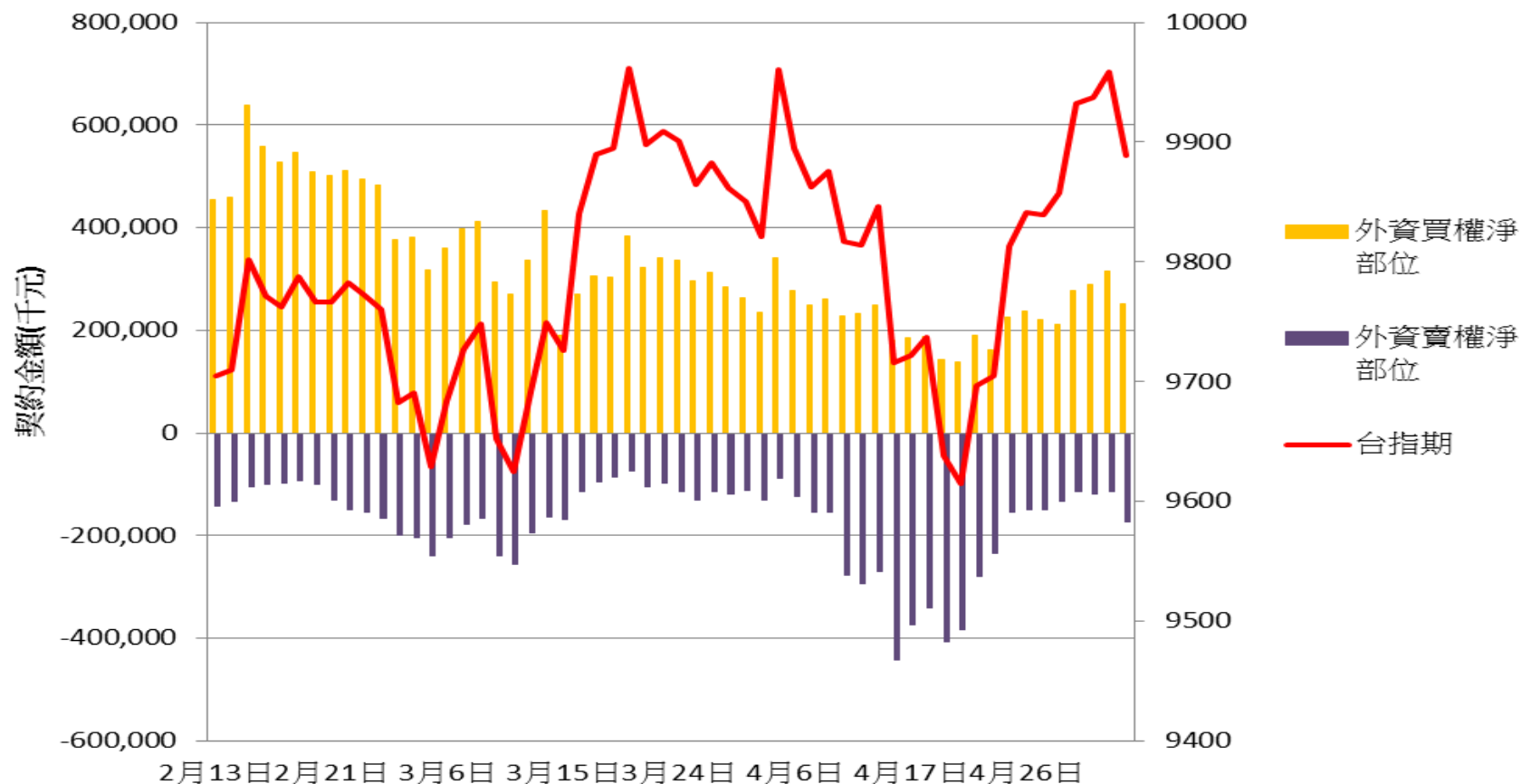
外資台指期與選擇權淨部位契約金額V.S台指期



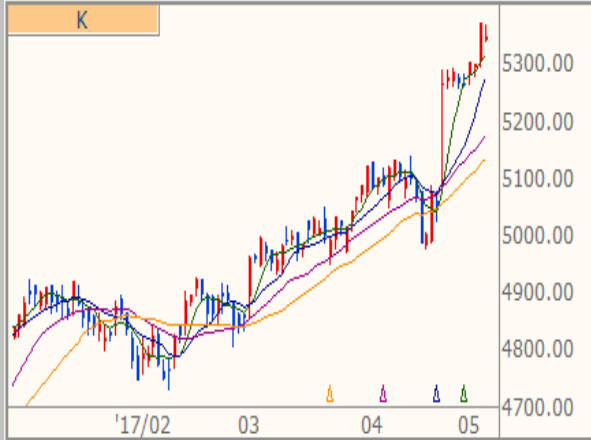
自營買賣權淨部位契約金額V.S台指期



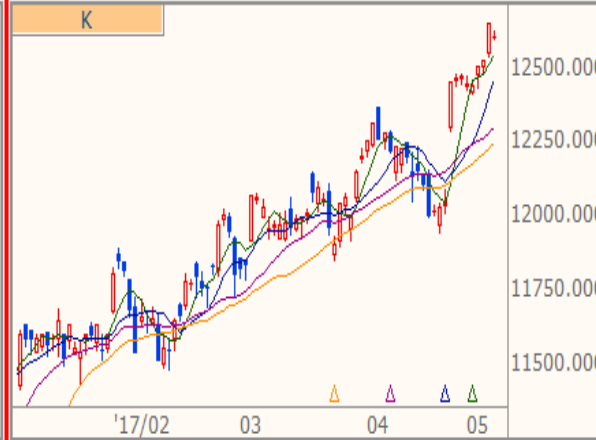
外資買賣權淨部位契約金額V.S台指期



技術分析
CAC 法國巴黎(日) ↑ 5350.750 -21.660 -0.40%
09:36:30 開 5344.920 高 5372.230 低 5343.020



技術分析
DAX 法蘭克福(日) ↑ 12606.240 -41.540 -0.33%
09:36:42 開 12601.460 高 12629.110 低 12599.870



技術分析
NKI 日經指數(日) ↑ 19445.700 +135.180 +0.70%
15:00:01 開 19335.720 高 19464.300 低 19335.020



技術分析
FTH 時報金融(日) ↑ 7243.600 -4.500 -0.06%
08:36:41 開 7248.100 高 7248.600 低 7222.810



技術分析
NAS NASDAQ(日) ↑ 6075.340 +2.790 +0.05%
16:00:00 開 6070.320 高 6080.820 低 6054.330



技術分析
DJI 道瓊指數(日) 20951.470 -6.430 -0.03% 16:47:58
開 20987.830 高 20990.720 低 20847.950





技術分析



TWD 台幣(日) 買 30.167 賣 30.181 +0.046 +0.1527% 07:33:00



技術分析



TWI 加權指數(日) 9899.940 -67.700 -0.68% 13:31:00 開9954.940 高9960.990 低9899.940

