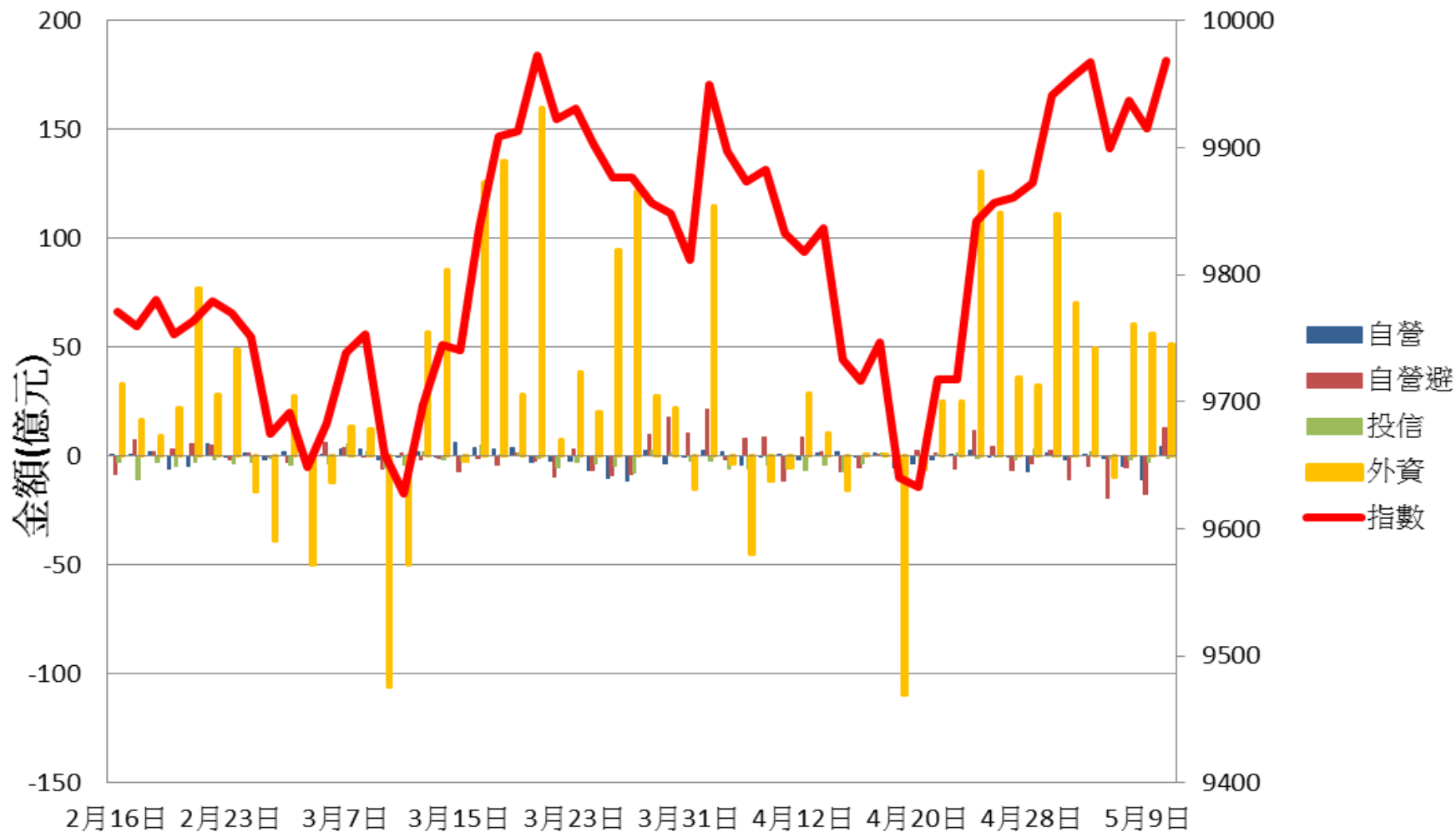
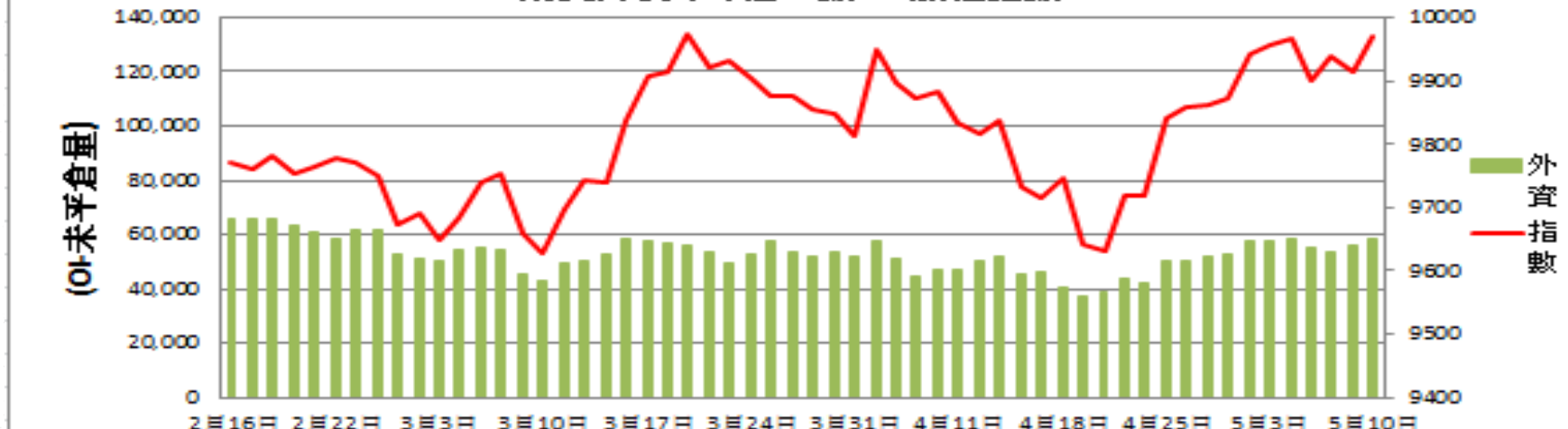


證券三大法人每日買賣超 V.S 加權指數



期貨外資未平倉口數 V.S 加權指數



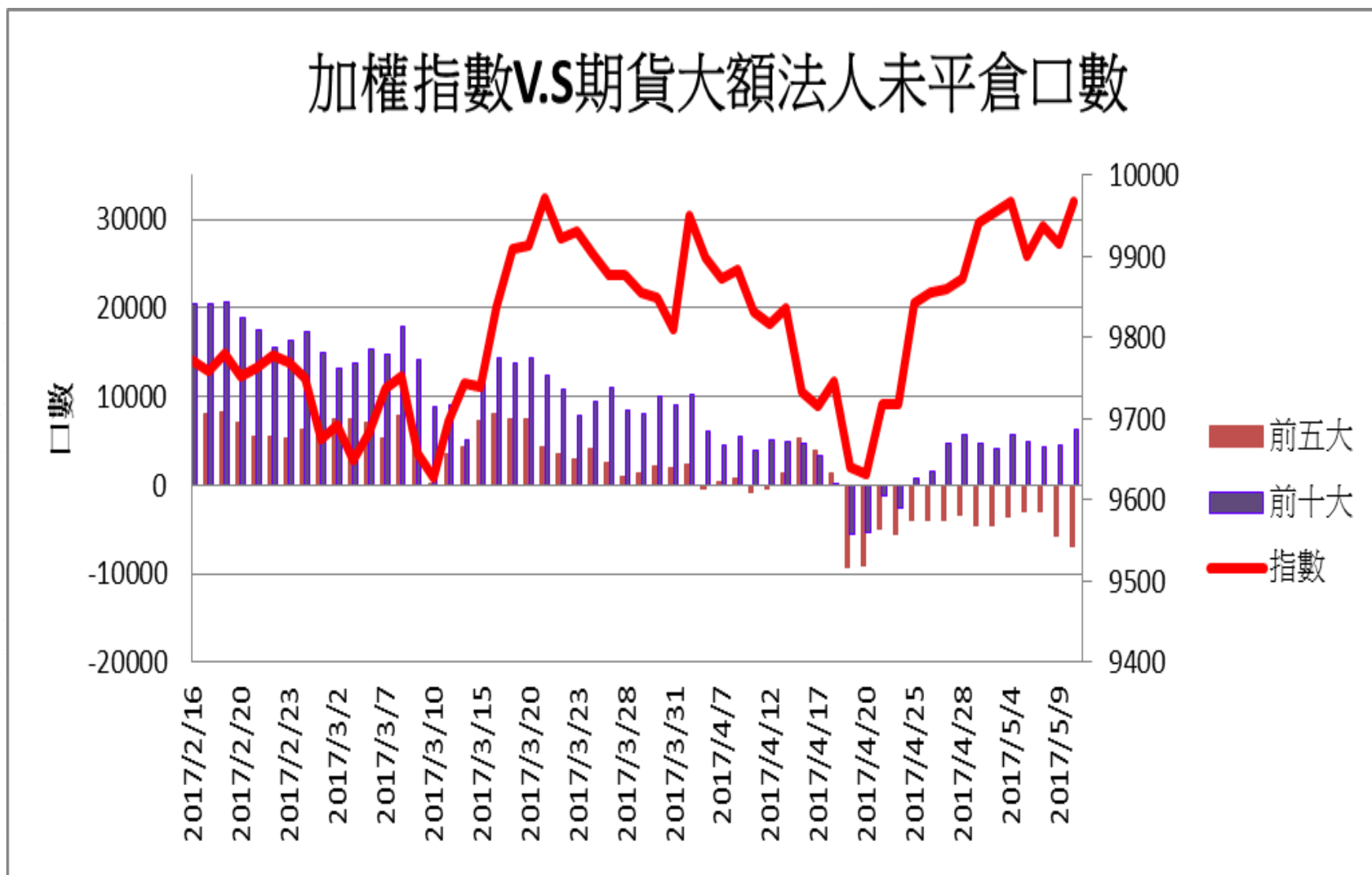
期貨投信未平倉口數



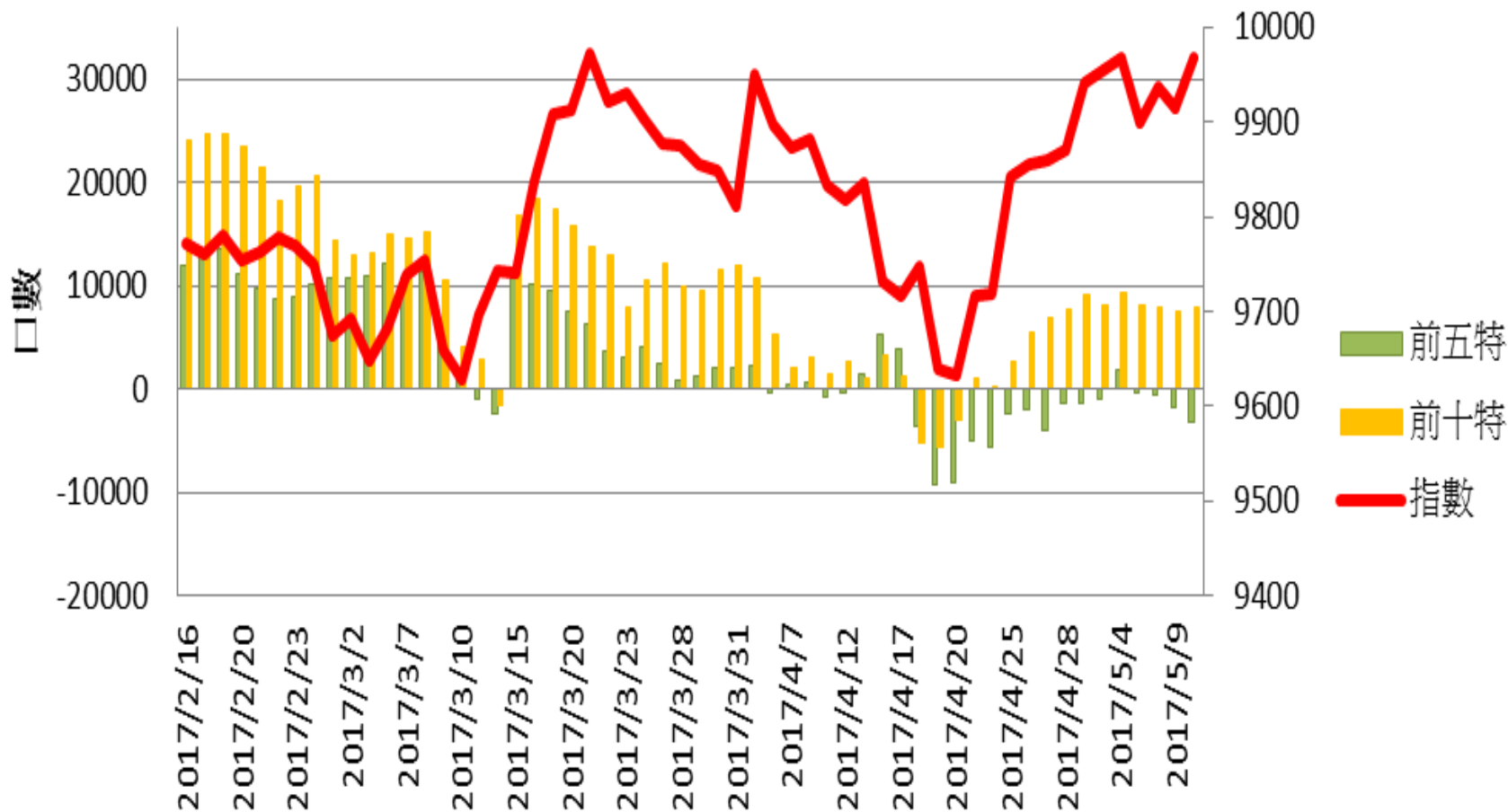
期貨自營未平倉口數



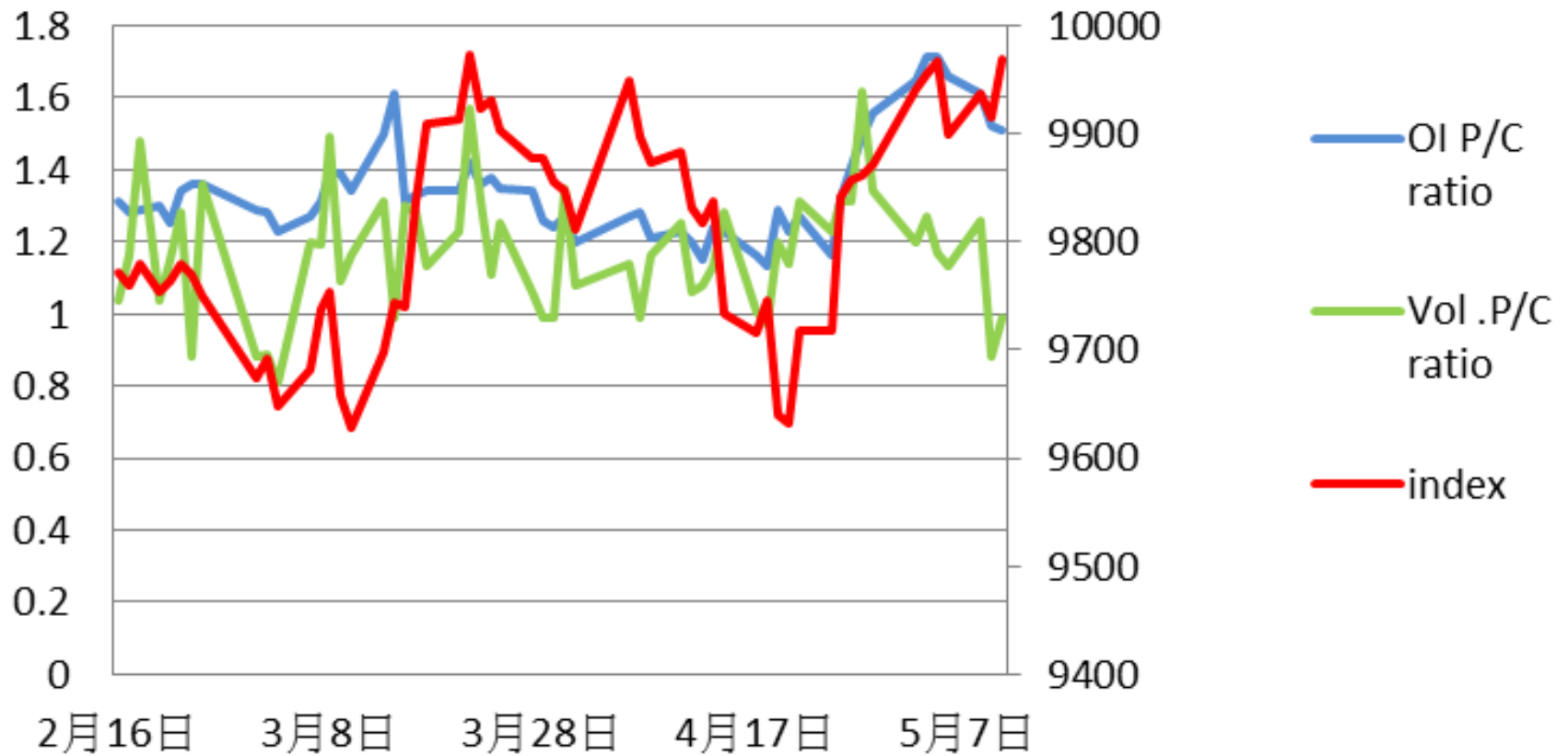
加權指數V.S期貨大額法人未平倉口數



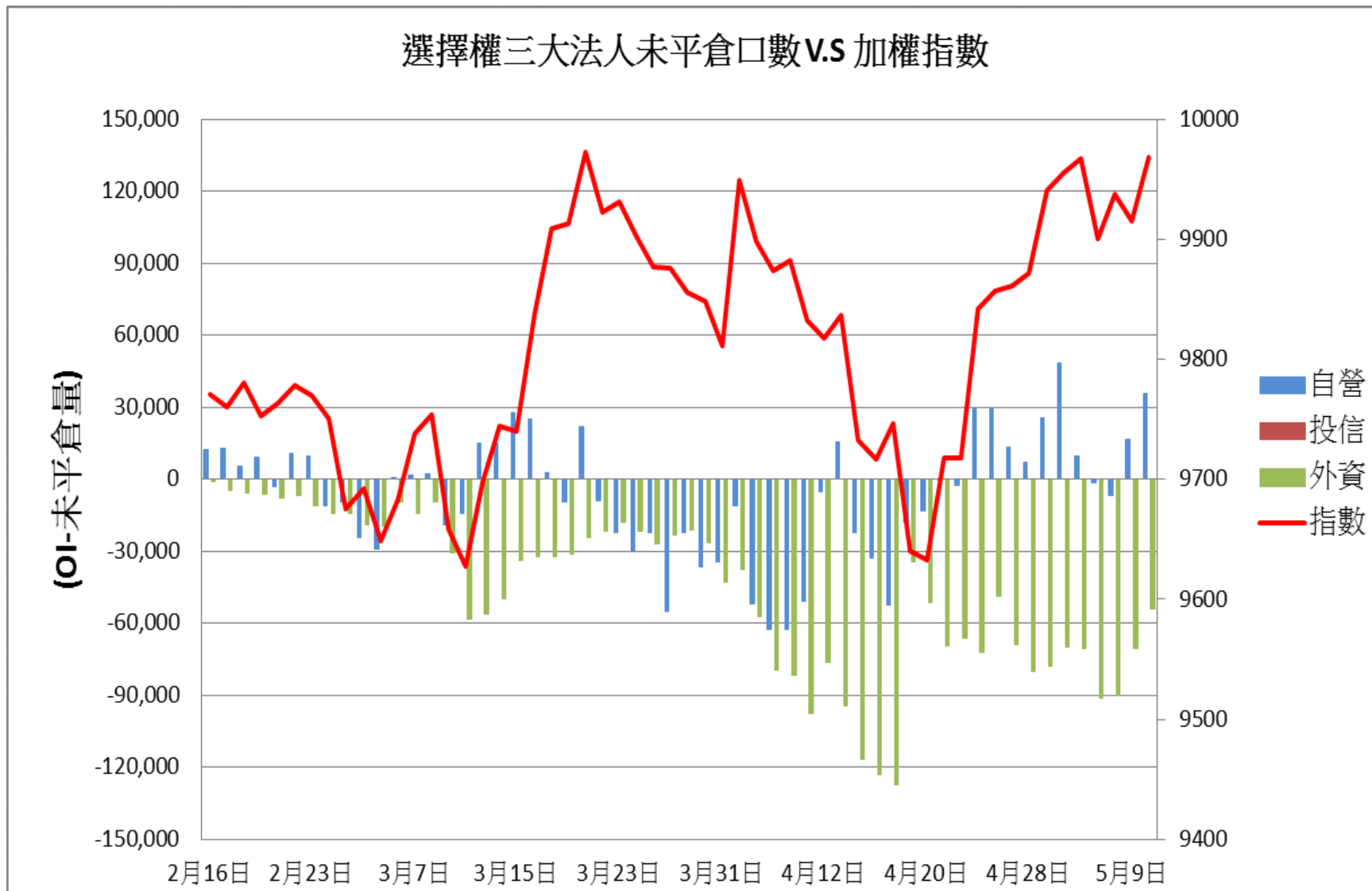
加權指數V.S期貨特定法人未平倉口數



加權指數V.S未平倉量P/Cratio V.S 成交量 P/C ratio

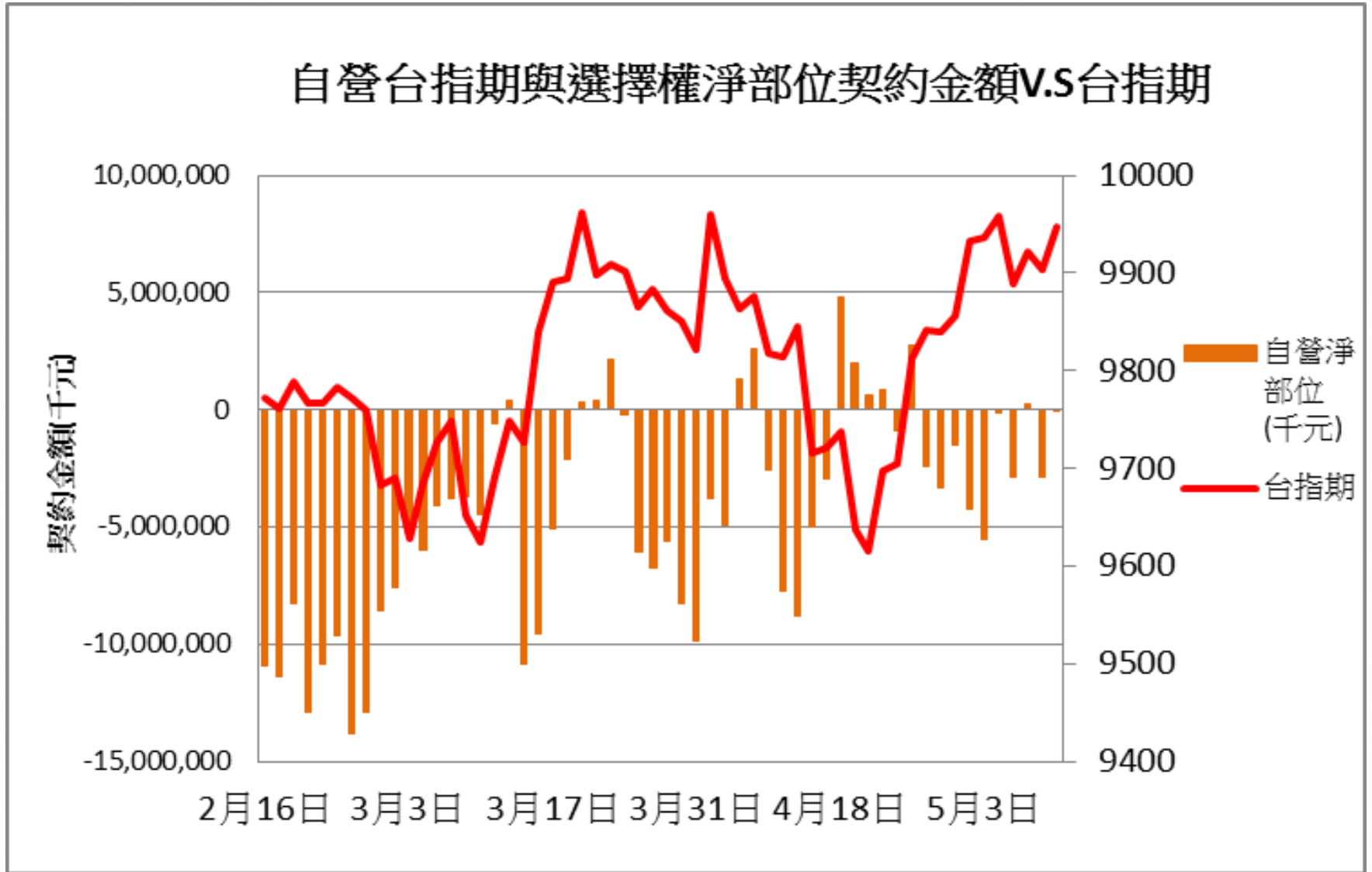


選擇權三大法人未平倉口數V.S 加權指數

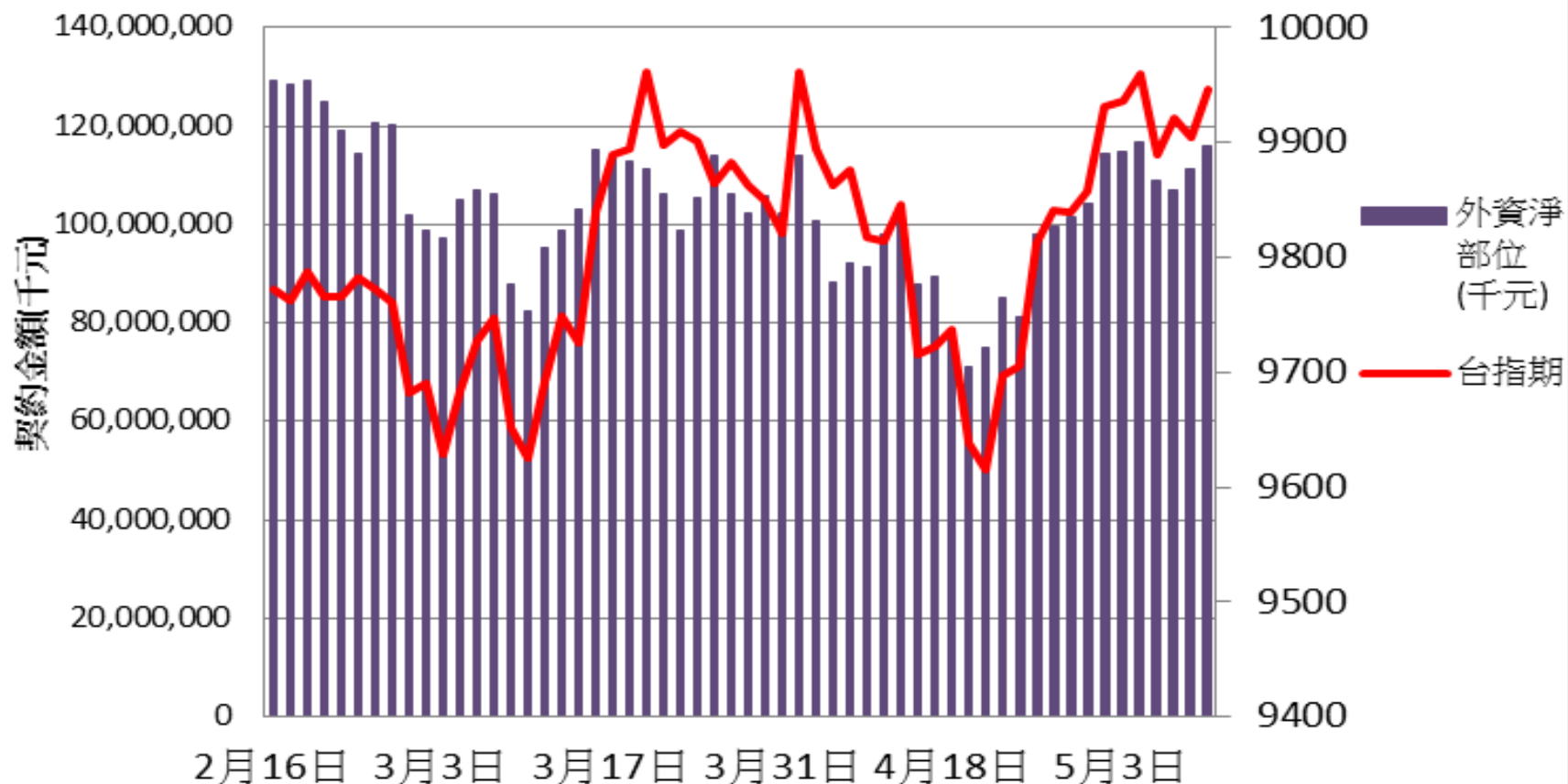


- 自營
- 投信
- 外資
- 指數

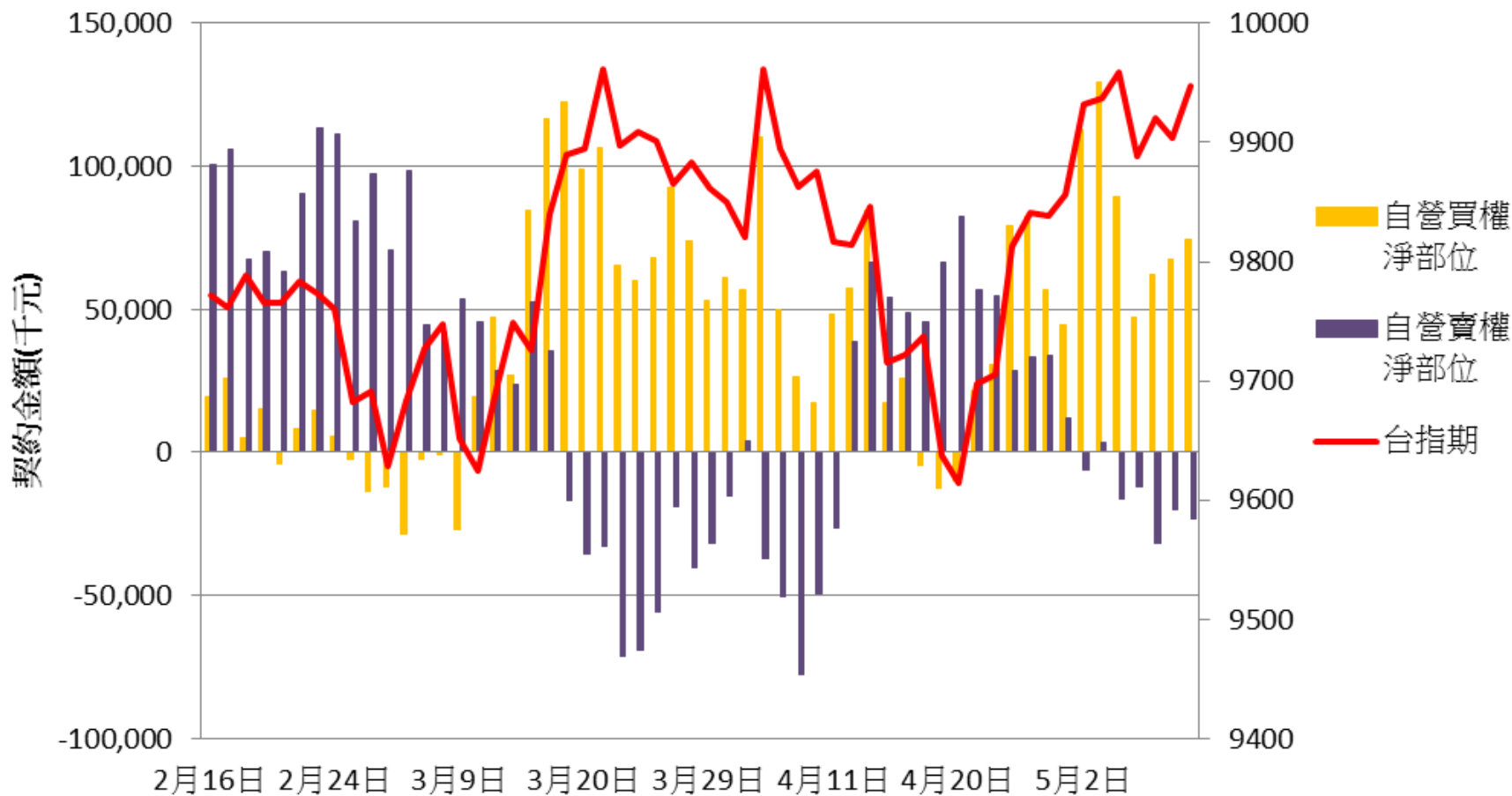
自營台指期與選擇權淨部位契約金額V.S台指期

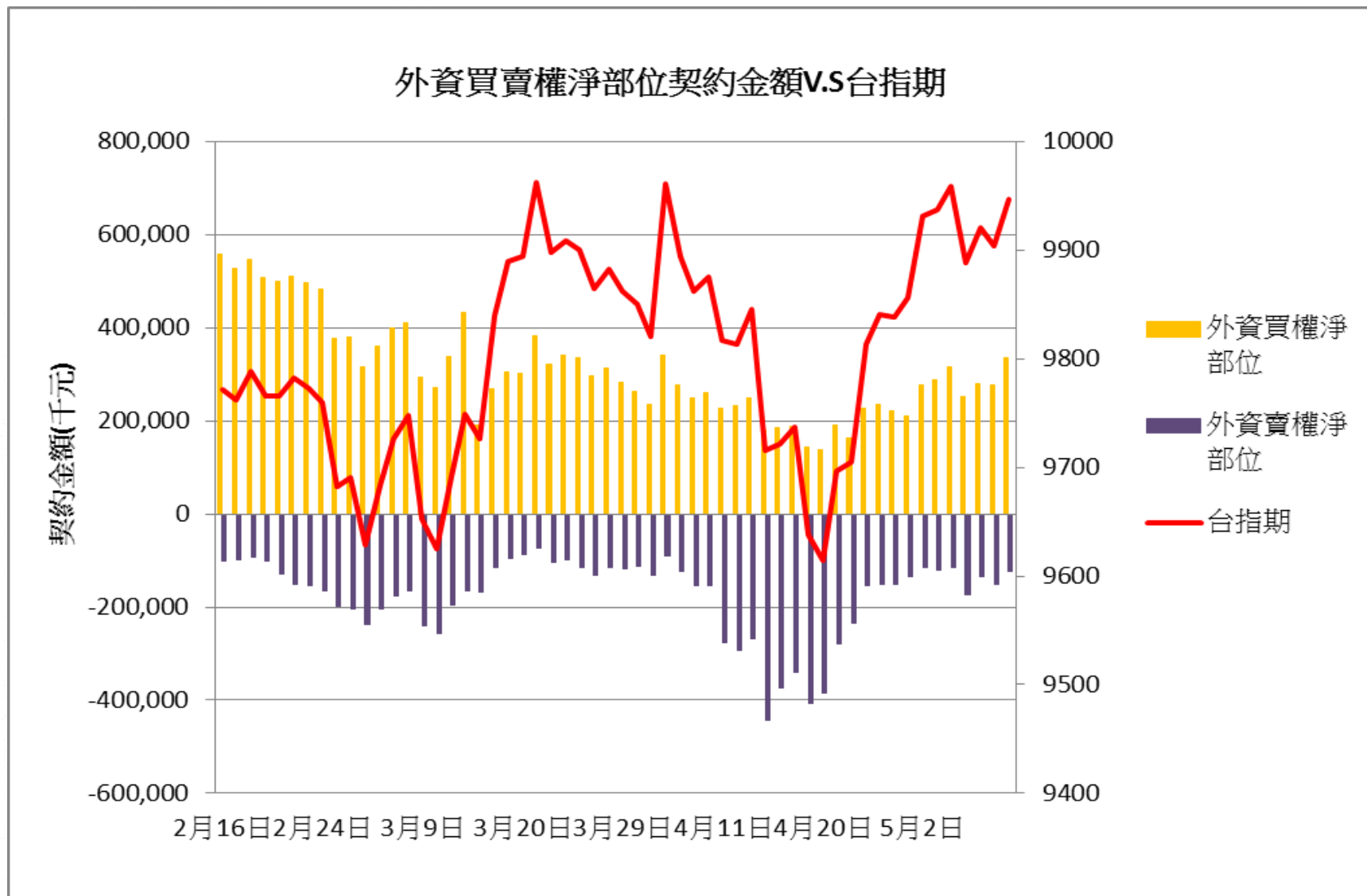


外資台指期與選擇權淨部位契約金額V.S台指期



自營買賣權淨部位契約金額V.S台指期







技術分析

DJI 道瓊指數(日) 20975.780 -36.500 -0.17% 16:38:48 開21022.280 高21046.710 低20938.040



技術分析

TWI 加權指數(日) 9968.320 +52.840 +0.53% 13:31:00 開9935.220 高9971.980 低9932.170



