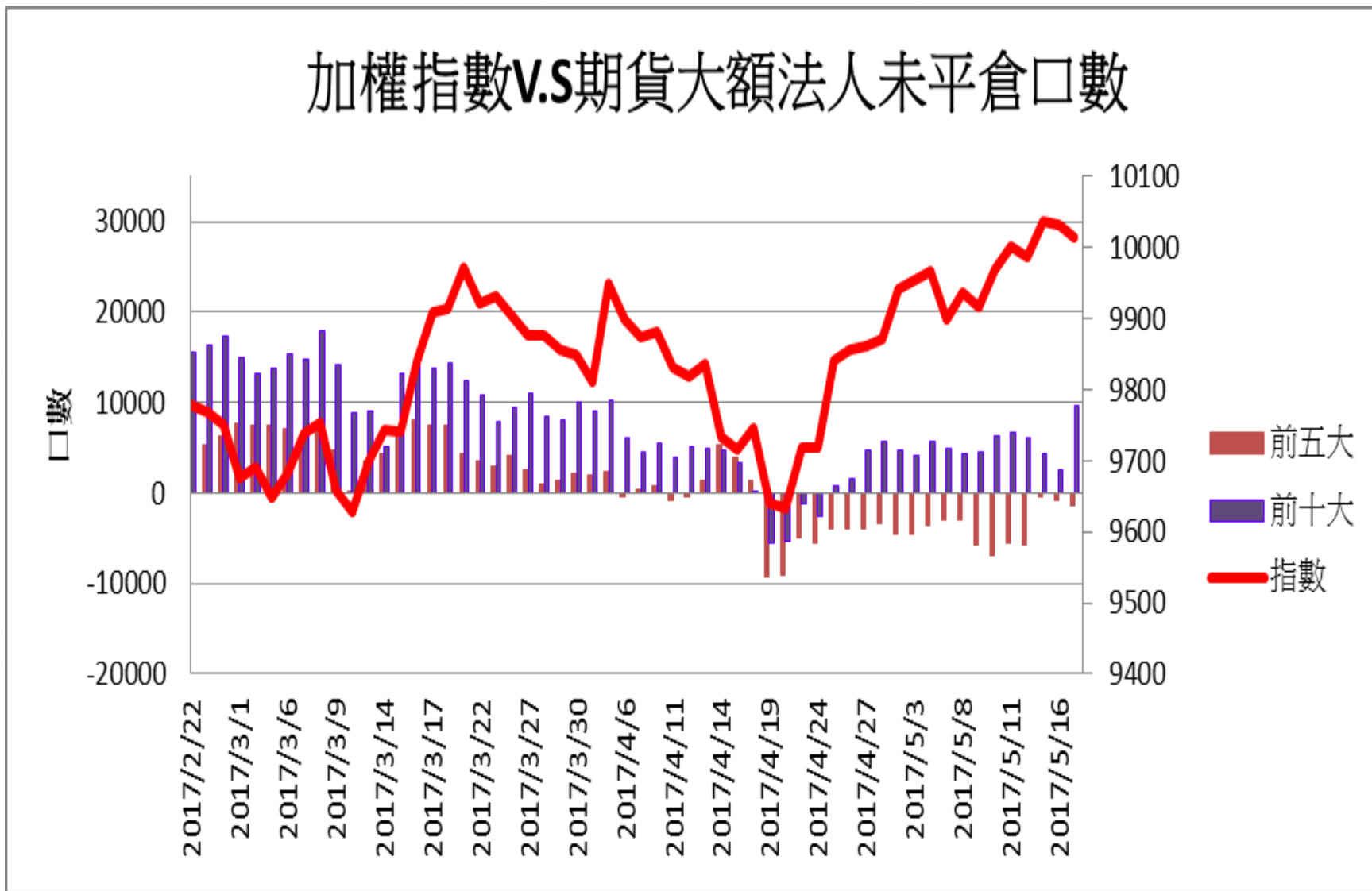
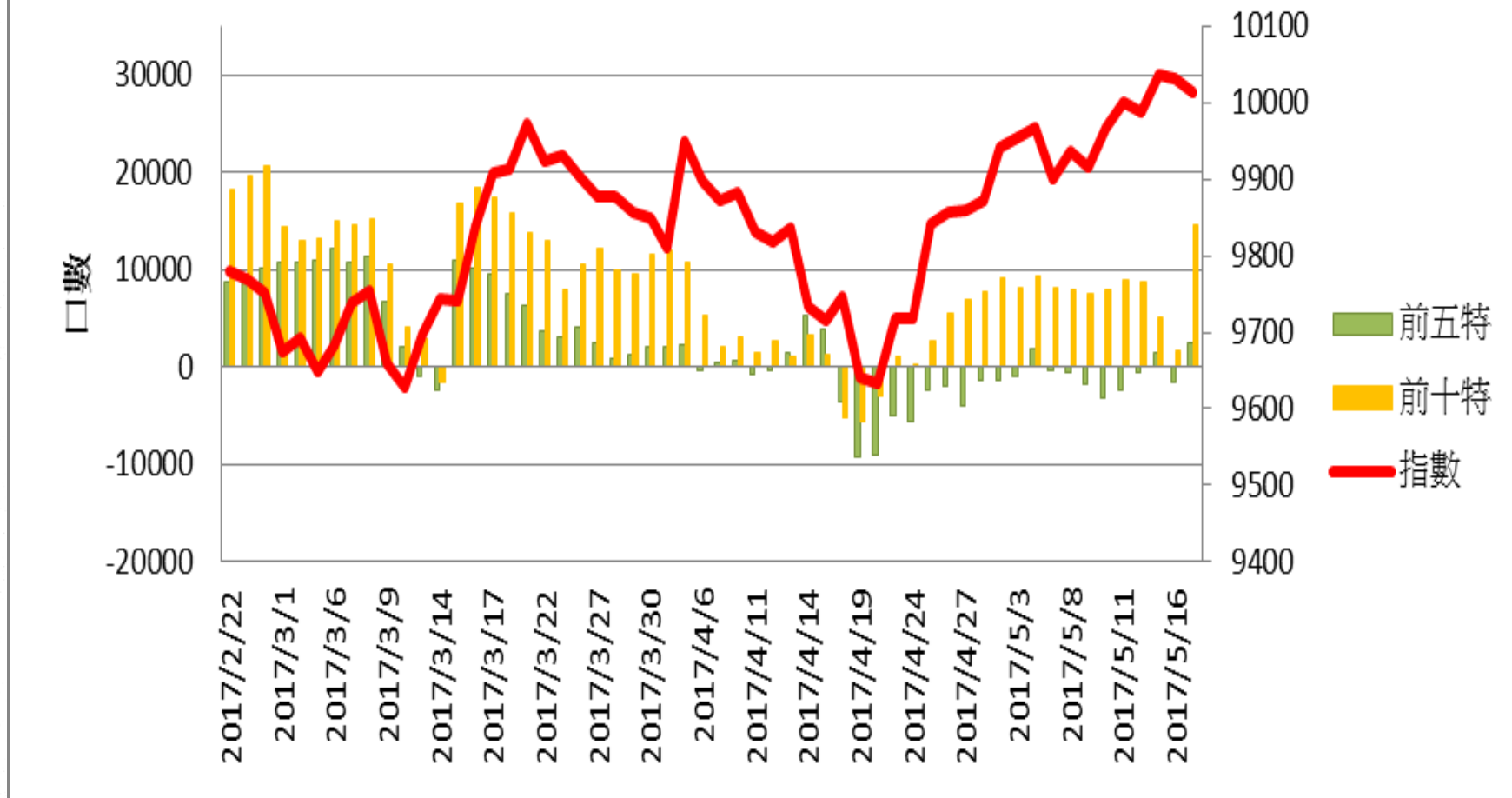


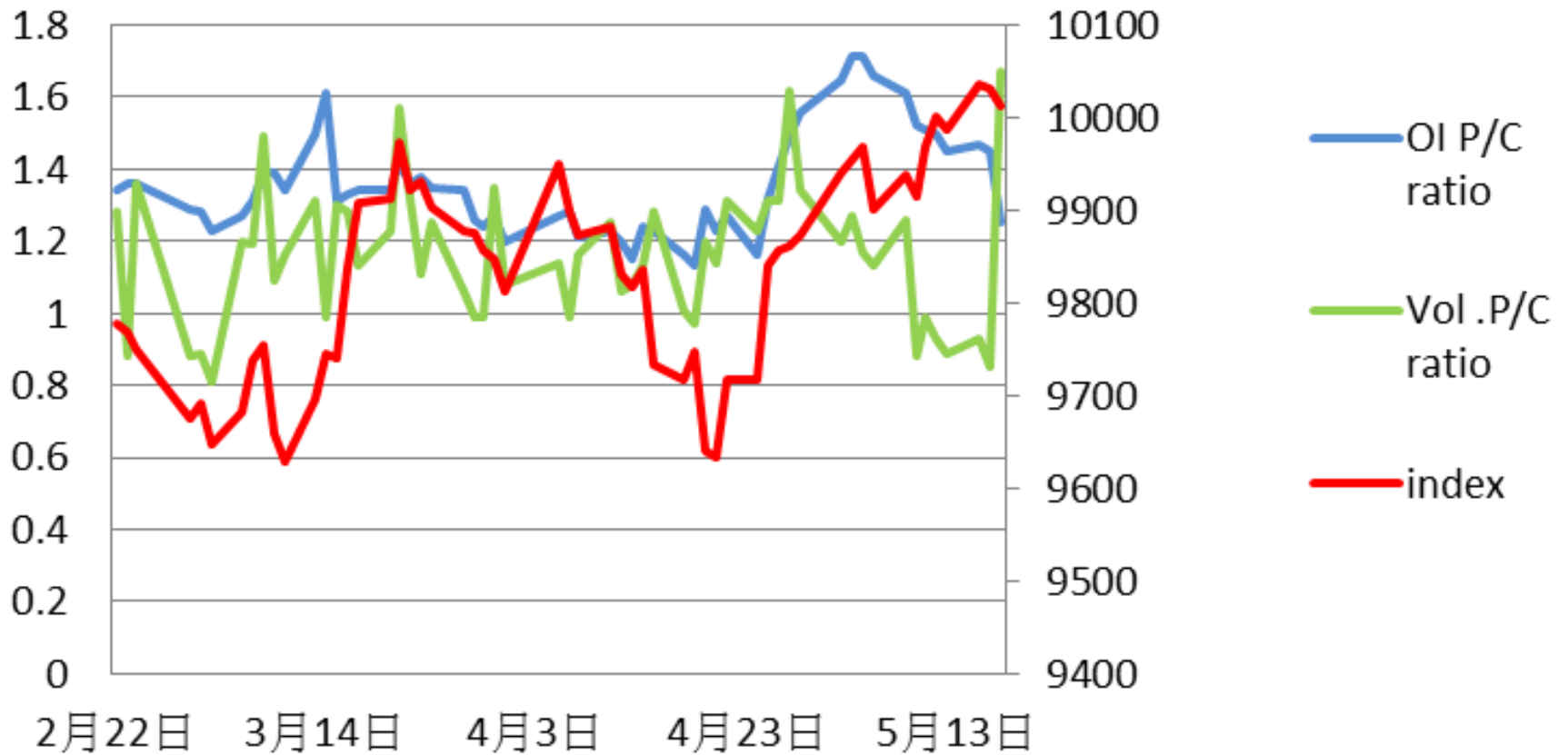
## 加權指數V.S期貨大額法人未平倉口數

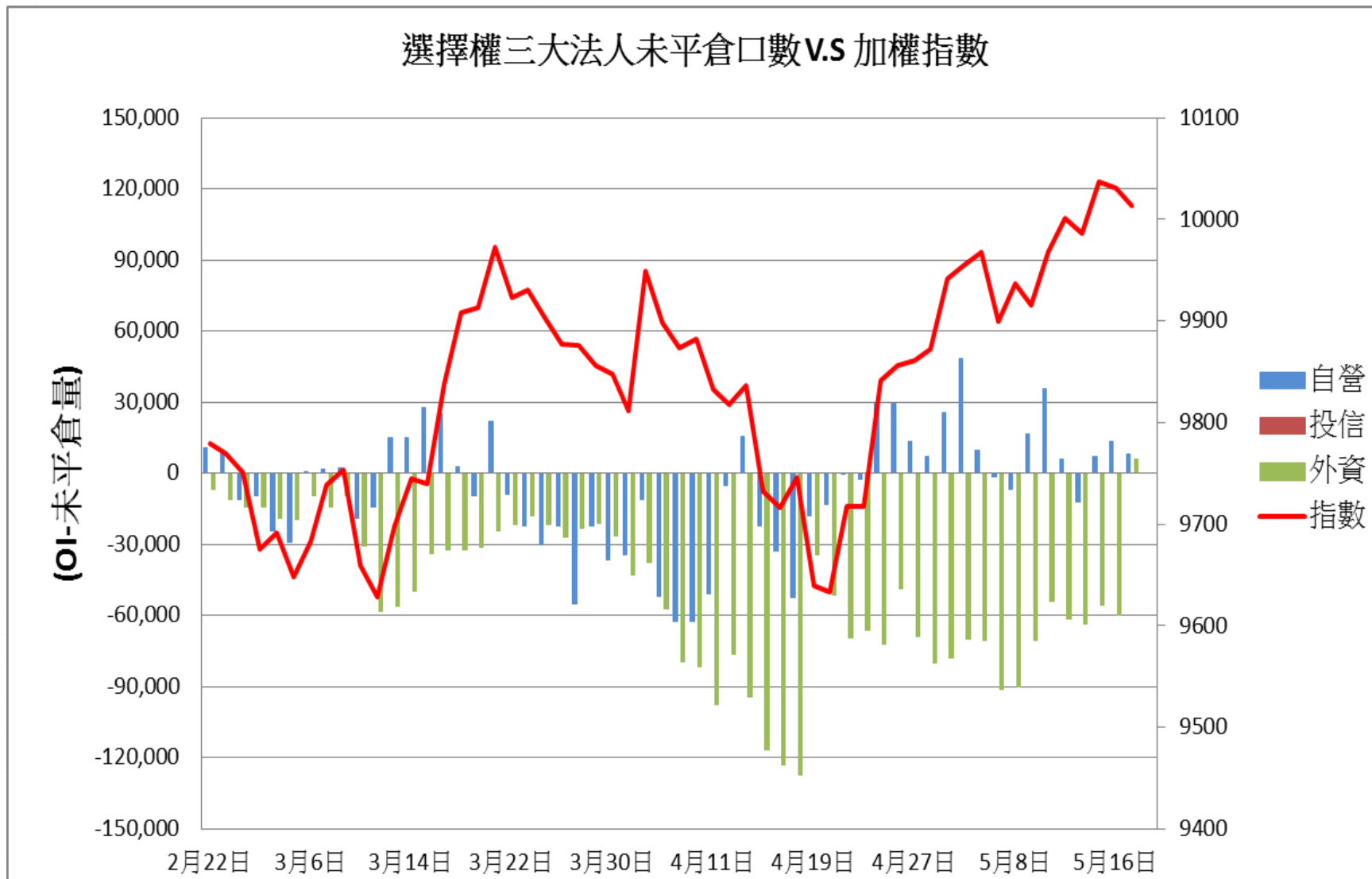


## 加權指數V.S期貨特定法人未平倉口數

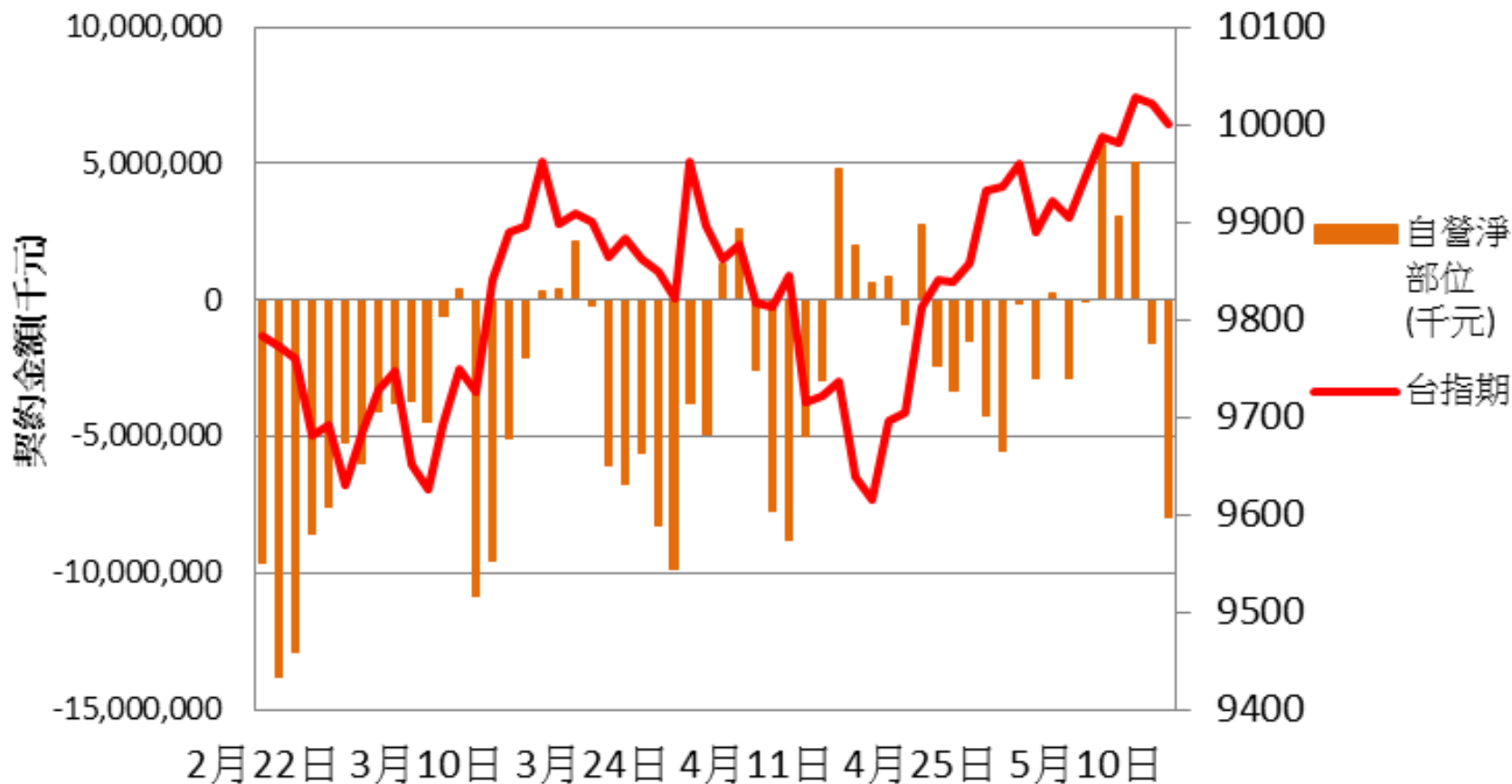


## 加權指數V.S未平倉量P/Cratio V.S 成交量P/C ratio

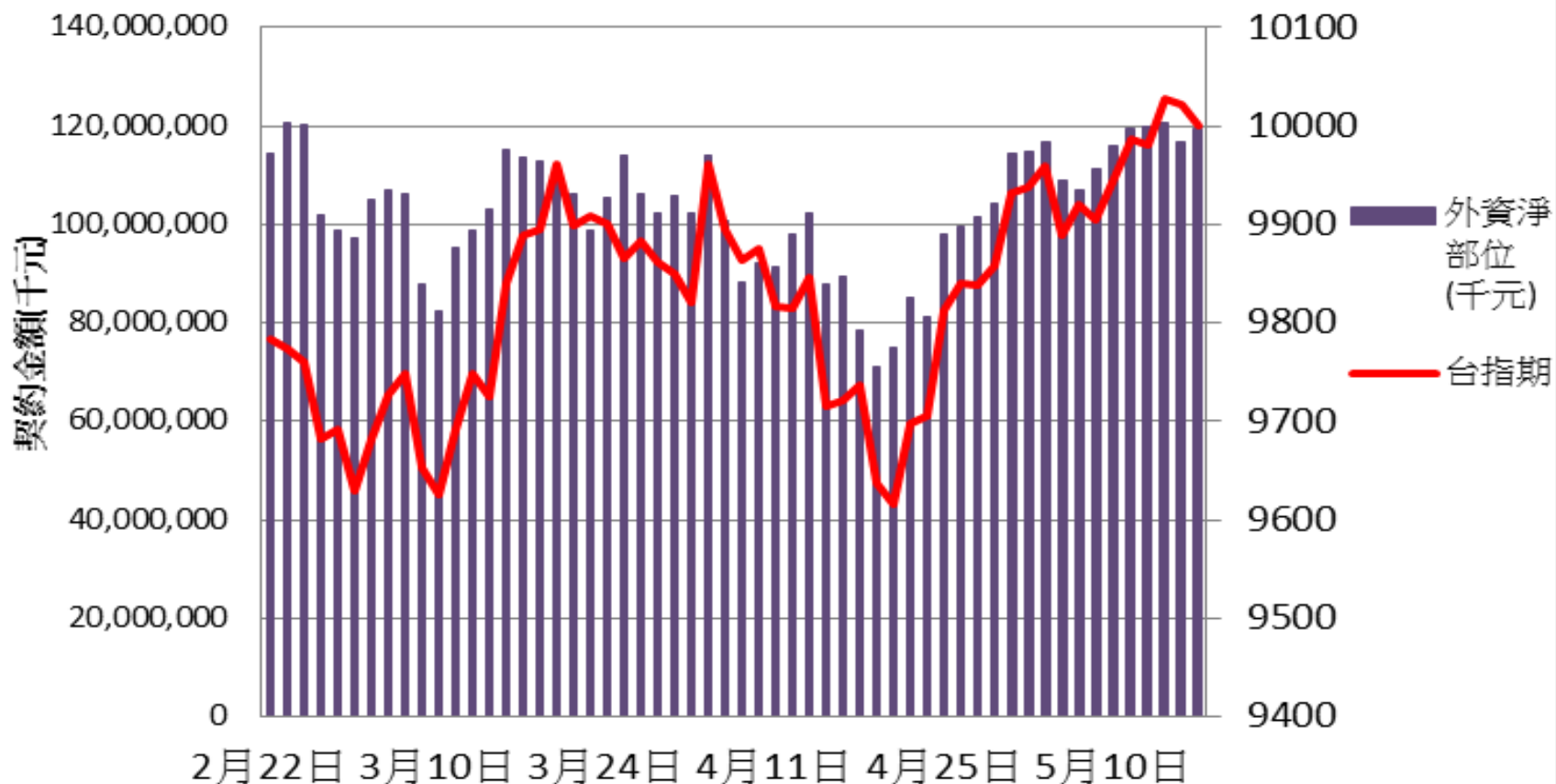




### 自營台指期與選擇權淨部位契約金額V.S台指期

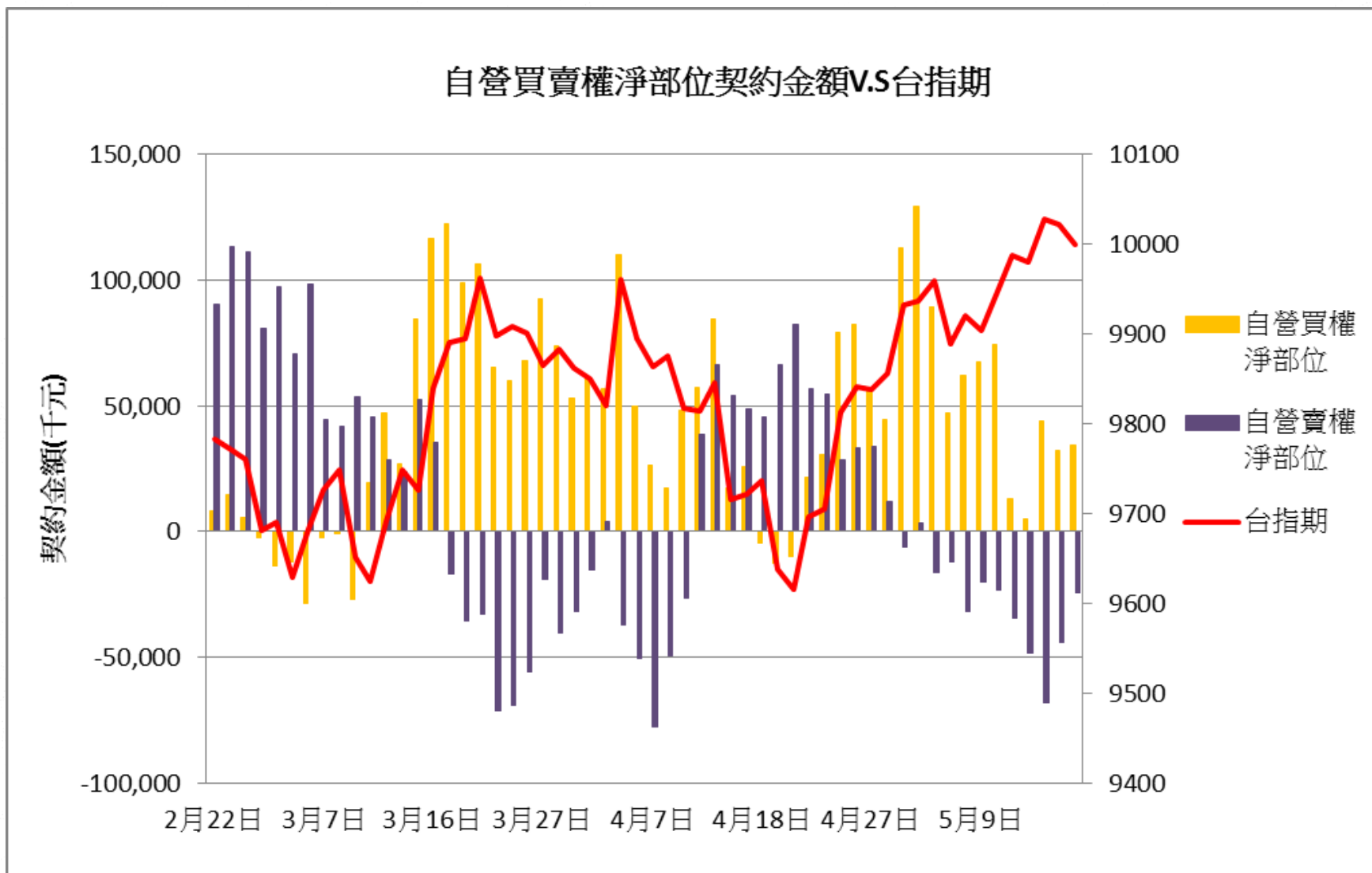


### 外資台指期與選擇權淨部位契約金額V.S台指期

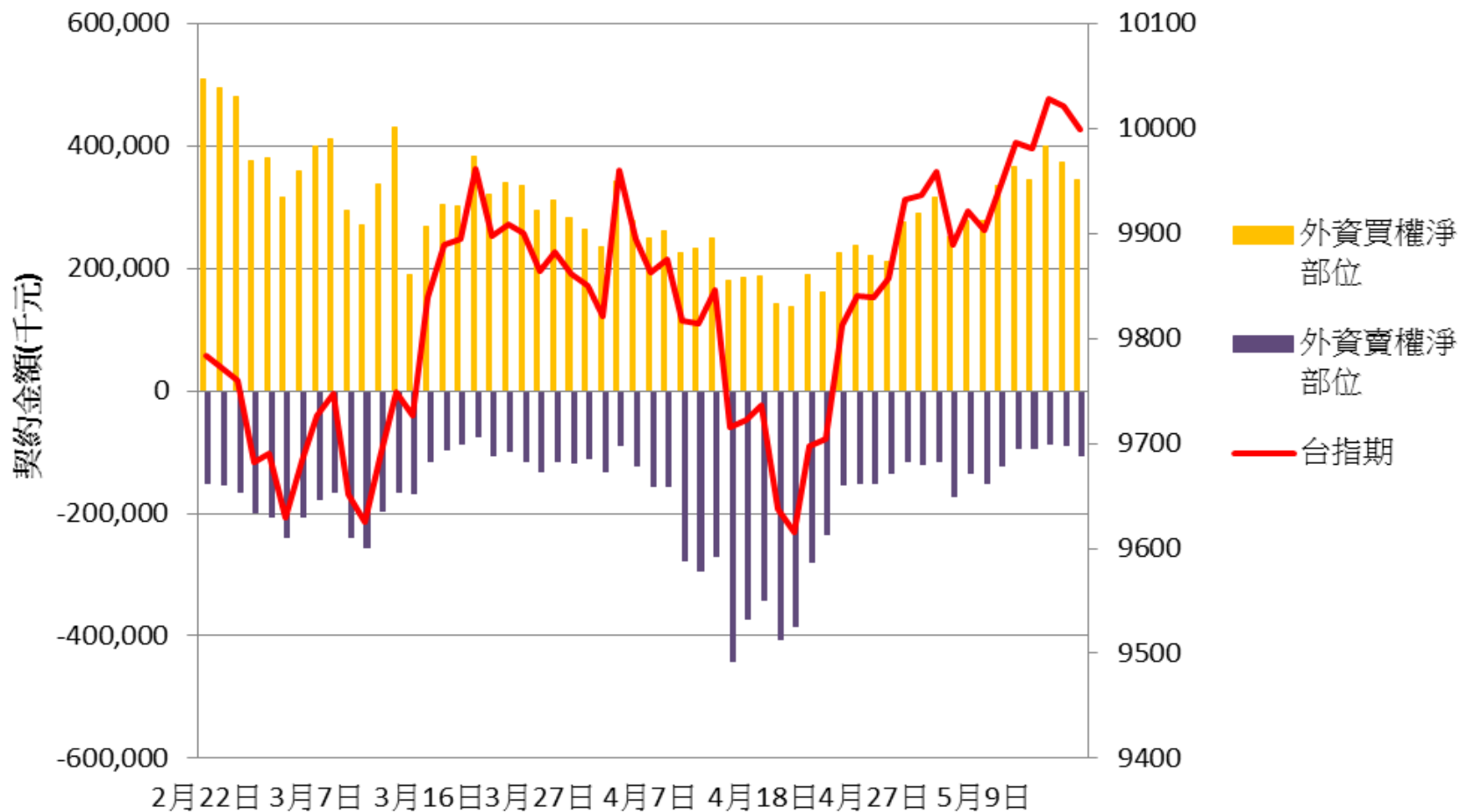




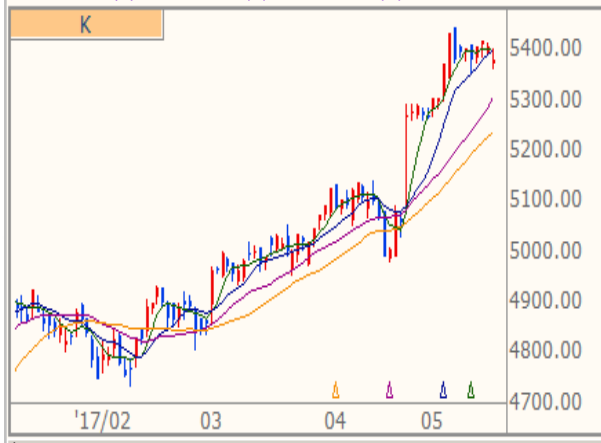
自營買賣權淨部位契約金額V.S台指期



外資買賣權淨部位契約金額V.S台指期



**技術分析**  
CAC 法國巴黎(日) ↑ 5378.940 -27.160 -0.50%  
09:30:45 開 5375.840 高 5406.690 低 5364.730



**技術分析**  
DAX 法蘭克福(日) ↓ 12755.430 -49.100 -0.38%  
09:30:45 開 12700.120 高 12765.440 低 12699.960



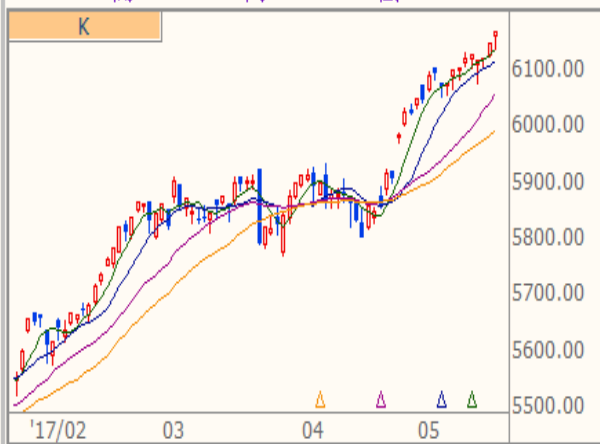
**技術分析**  
NKI 日經指數(日) ↓ 19814.880 -104.940 -0.53%  
15:00:02 開 19806.780 高 19842.780 低 19764.630



**技術分析**  
FTH 時報金融(日) ↑ 7523.280 +1.250 +0.02%  
08:30:45 開 7522.030 高 7523.280 低 7489.720



**技術分析**  
NAS NASDAQ(日) ↑ 6169.870 +20.200 +0.33%  
16:00:00 開 6160.520 高 6170.160 低 6139.100



**技術分析**  
DJI 道瓊指數(日) 20979.750 -2.190 -0.01% 16:44:25  
開 20984.480 高 21033.530 低 20932.880

