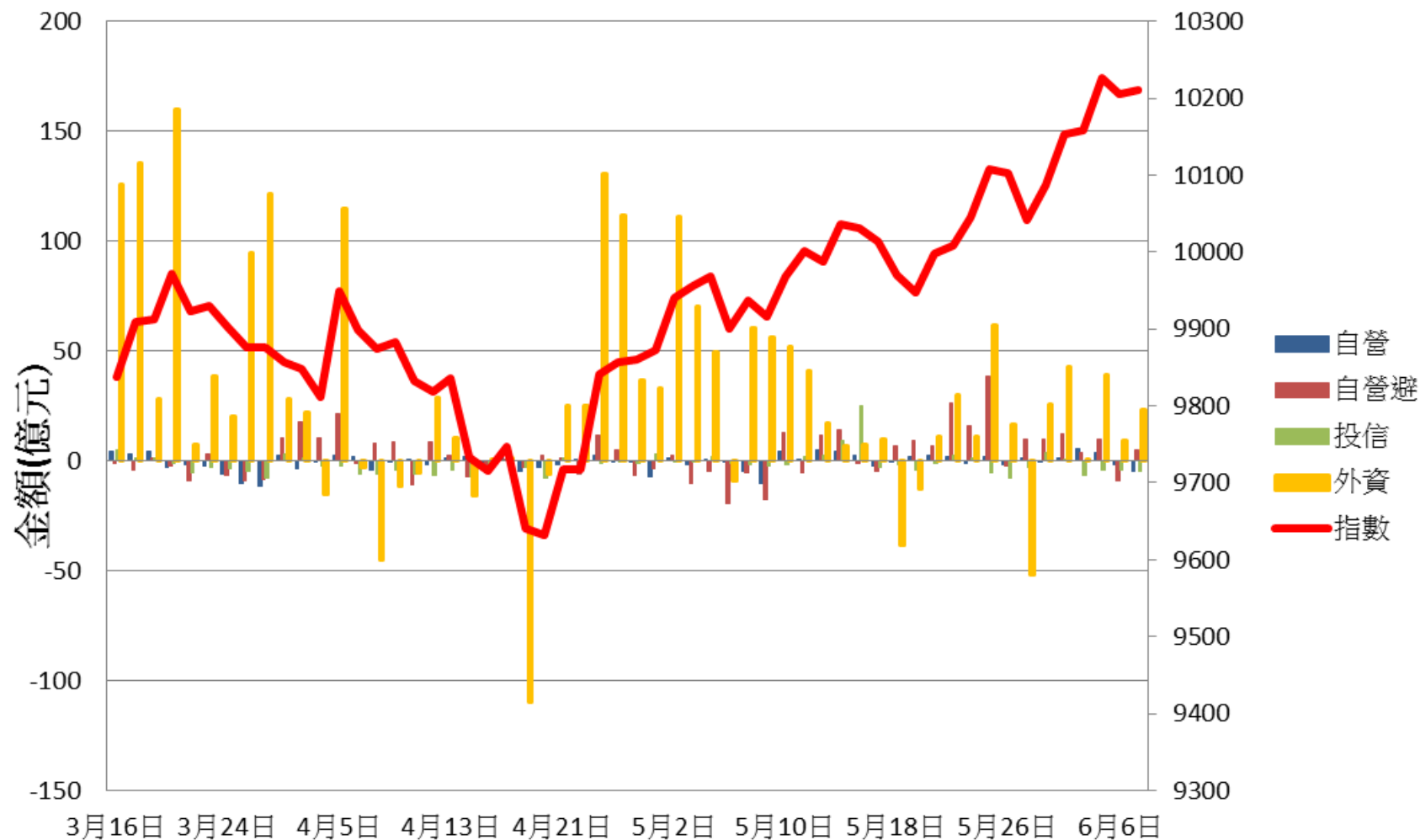
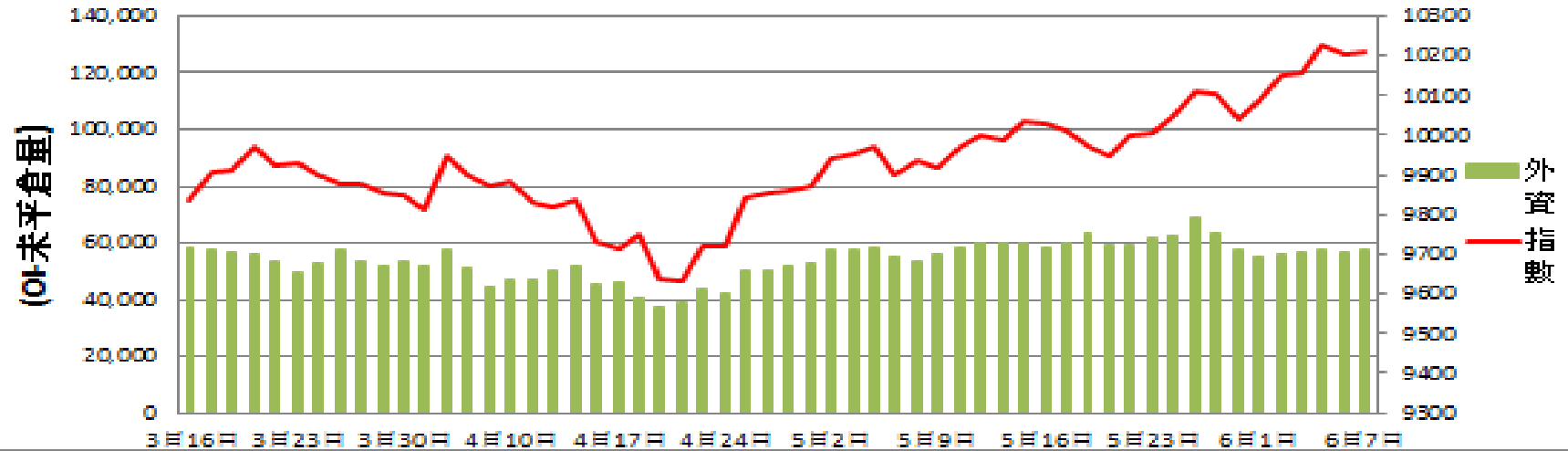


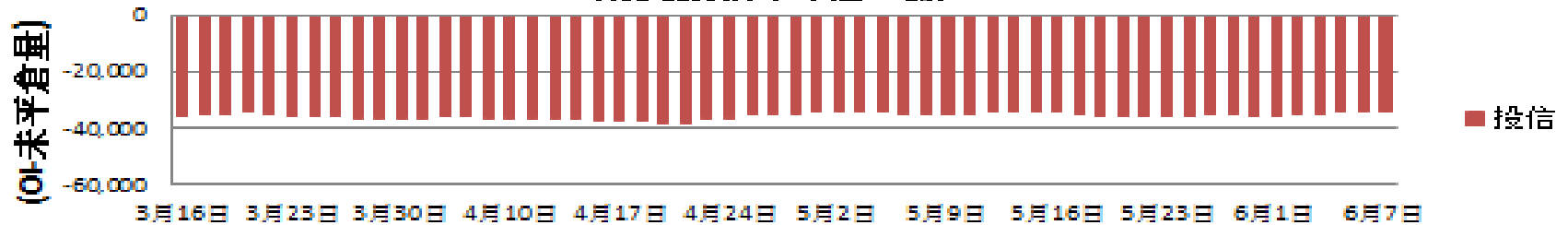
證券三大法人每日買賣超 V.S 加權指數



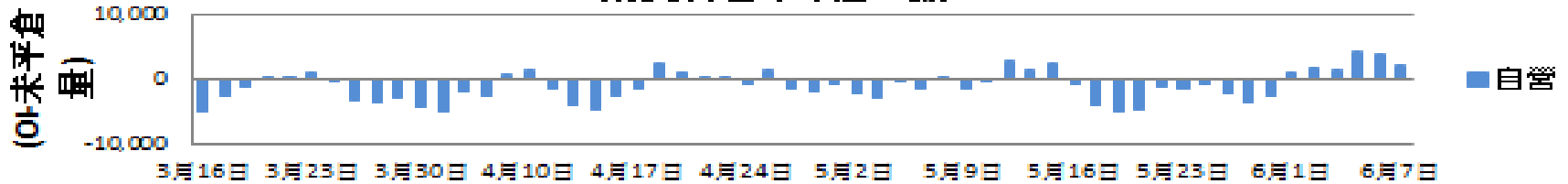
期貨外資未平倉口數 V.S 加權指數



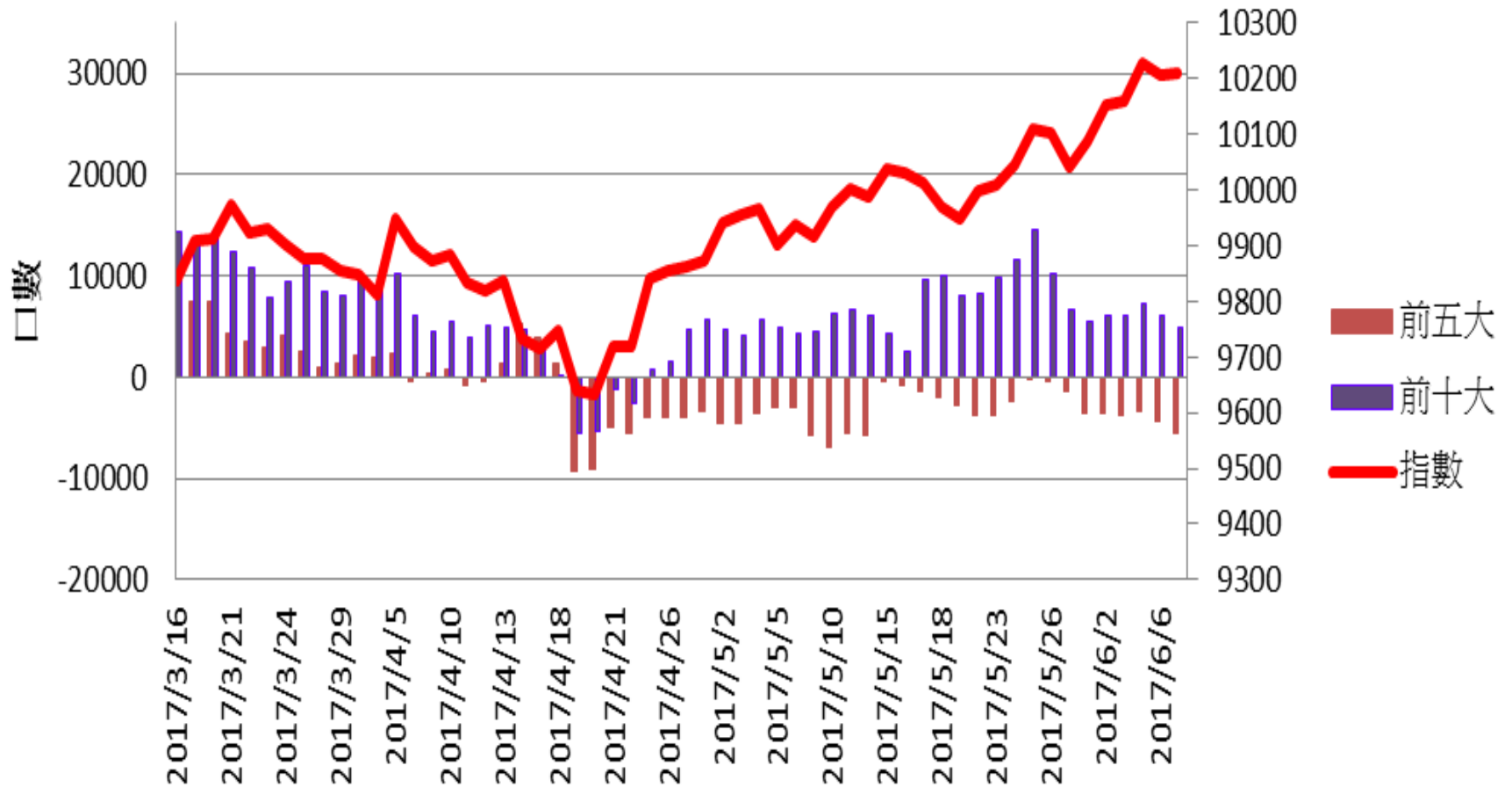
期貨投信未平倉口數



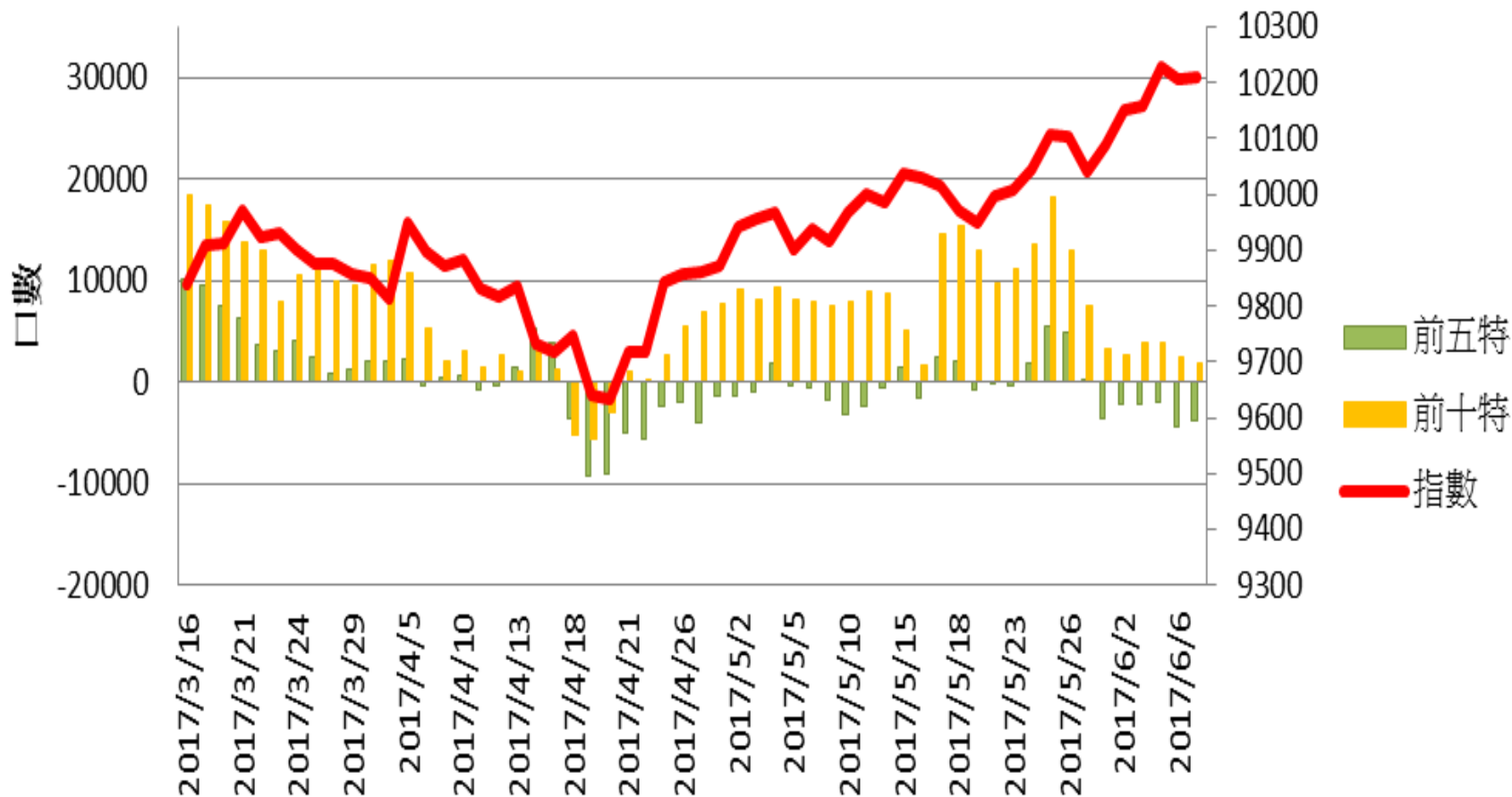
期貨自營未平倉口數



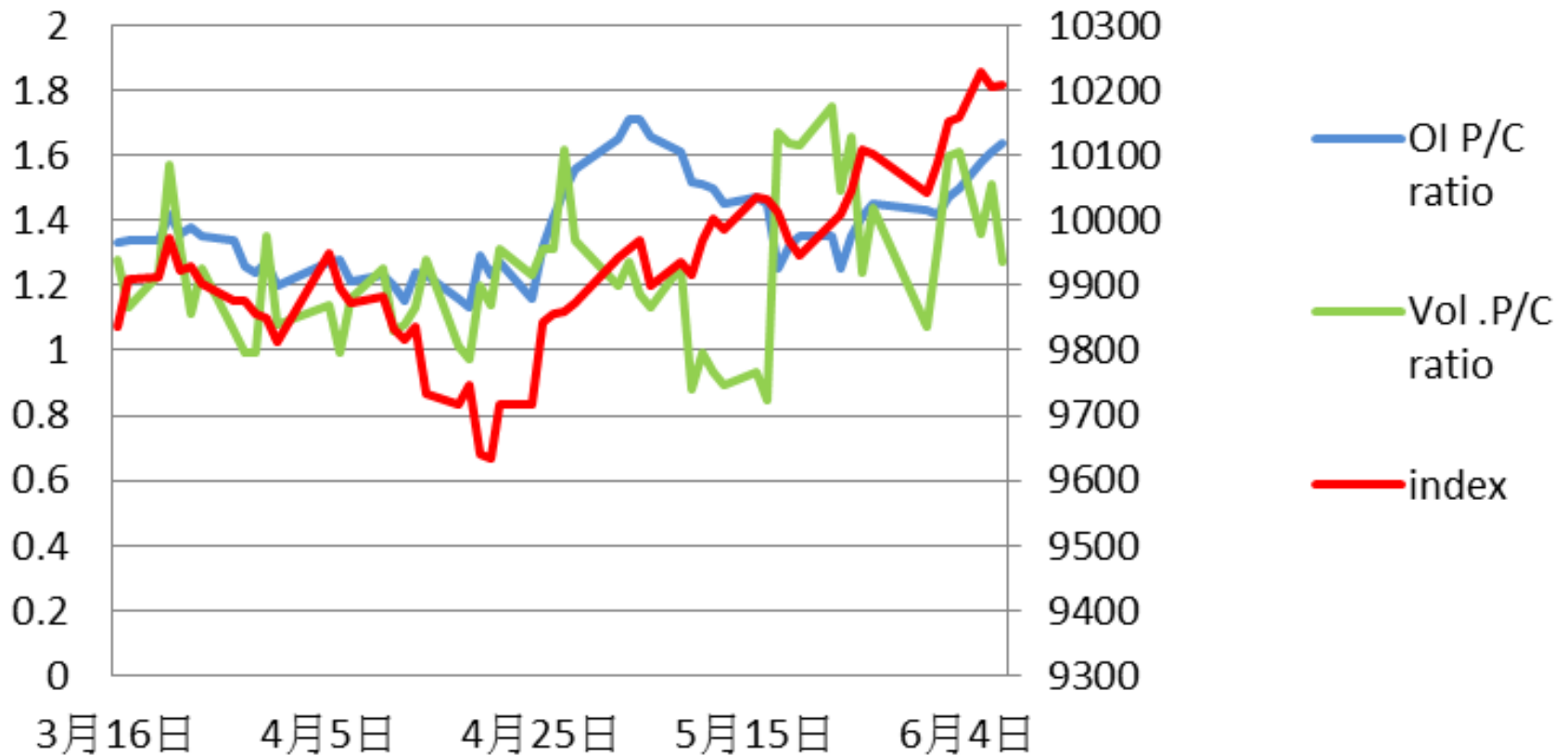
## 加權指數V.S期貨大額法人未平倉口數



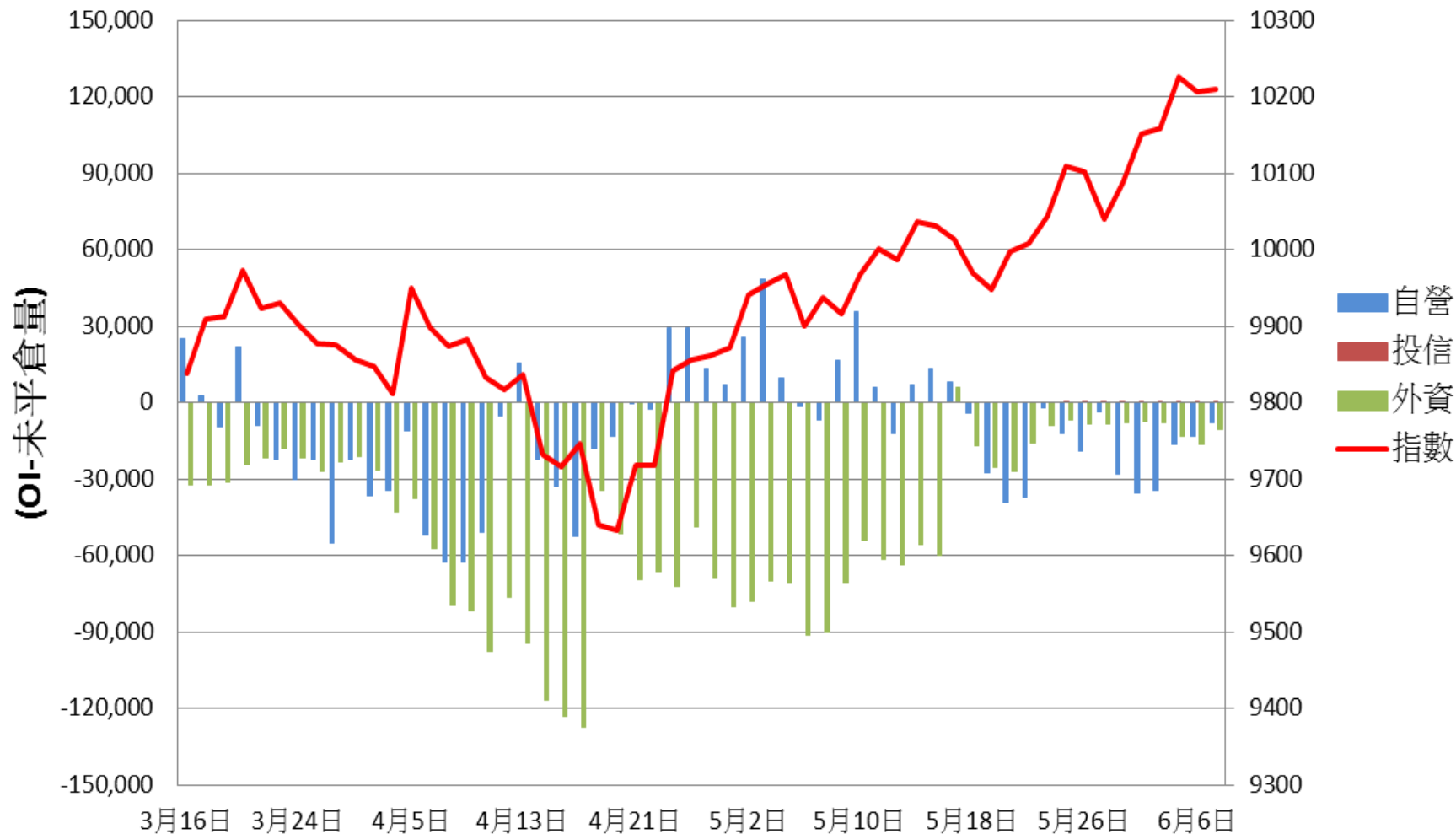
## 加權指數V.S期貨特定法人未平倉口數



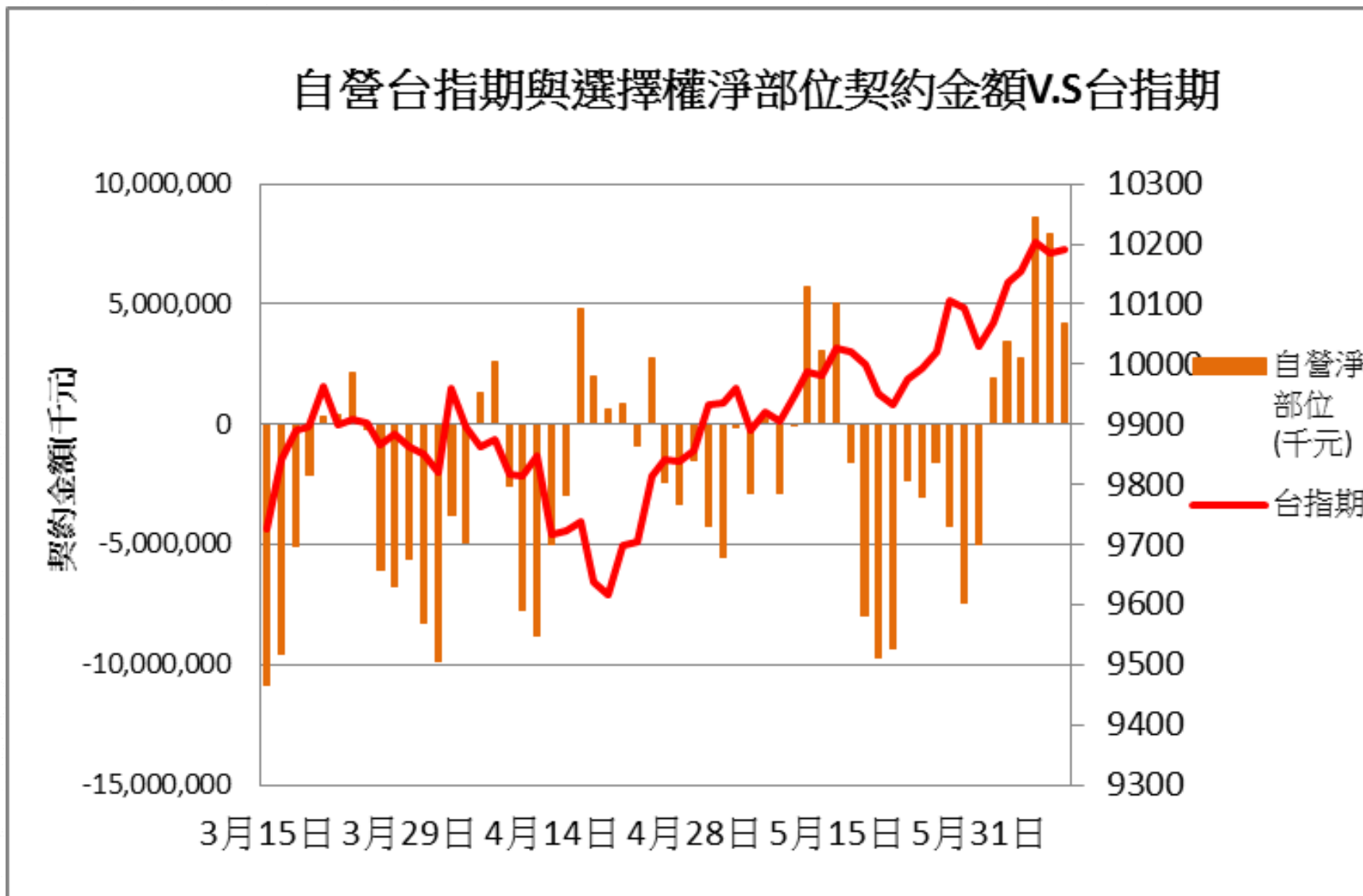
## 加權指數V.S未平倉量P/Cratio V.S 成交量 P/C ratio



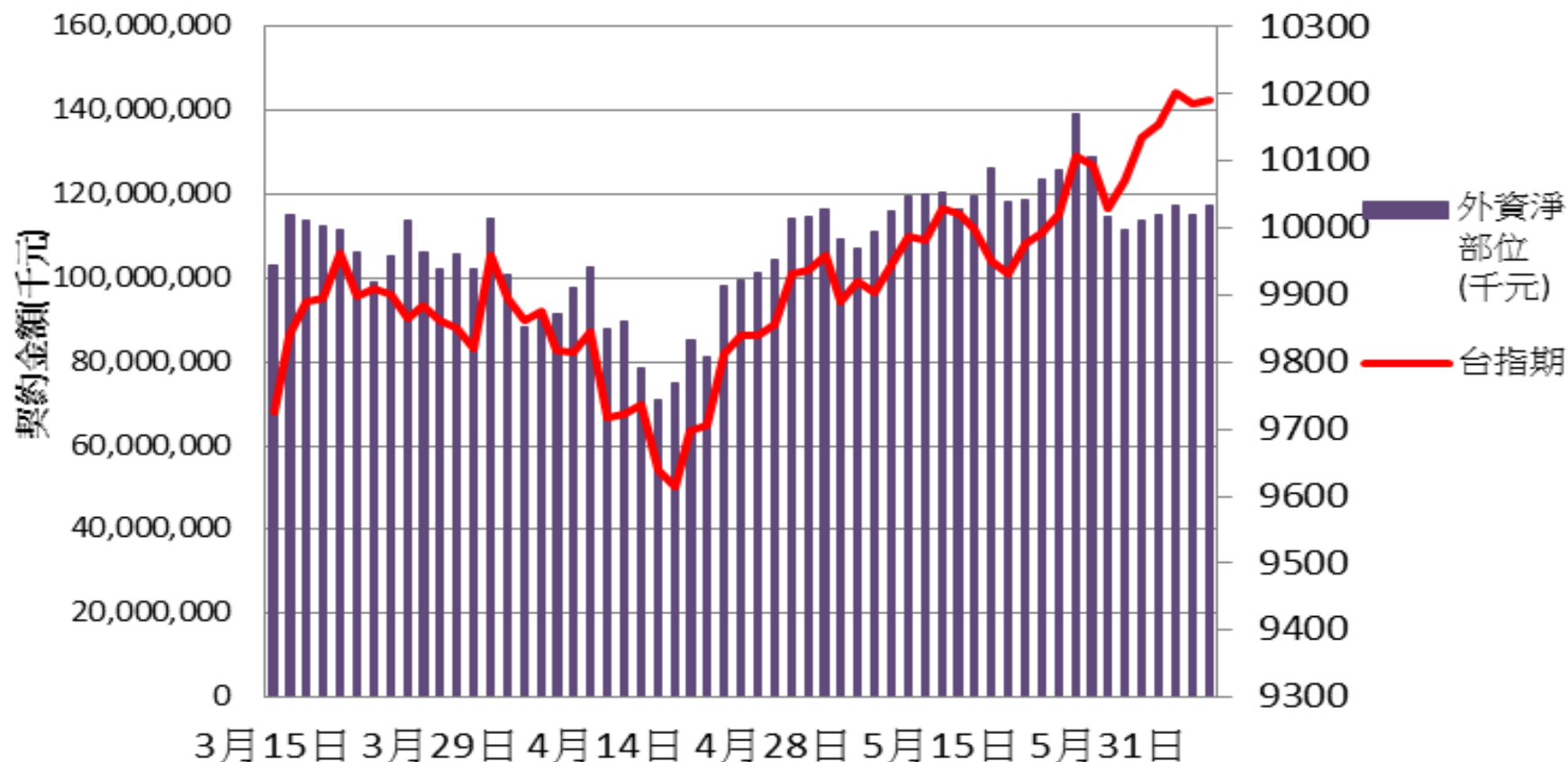
選擇權三大法人未平倉口數 v.s 加權指數



### 自營台指期與選擇權淨部位契約金額V.S台指期

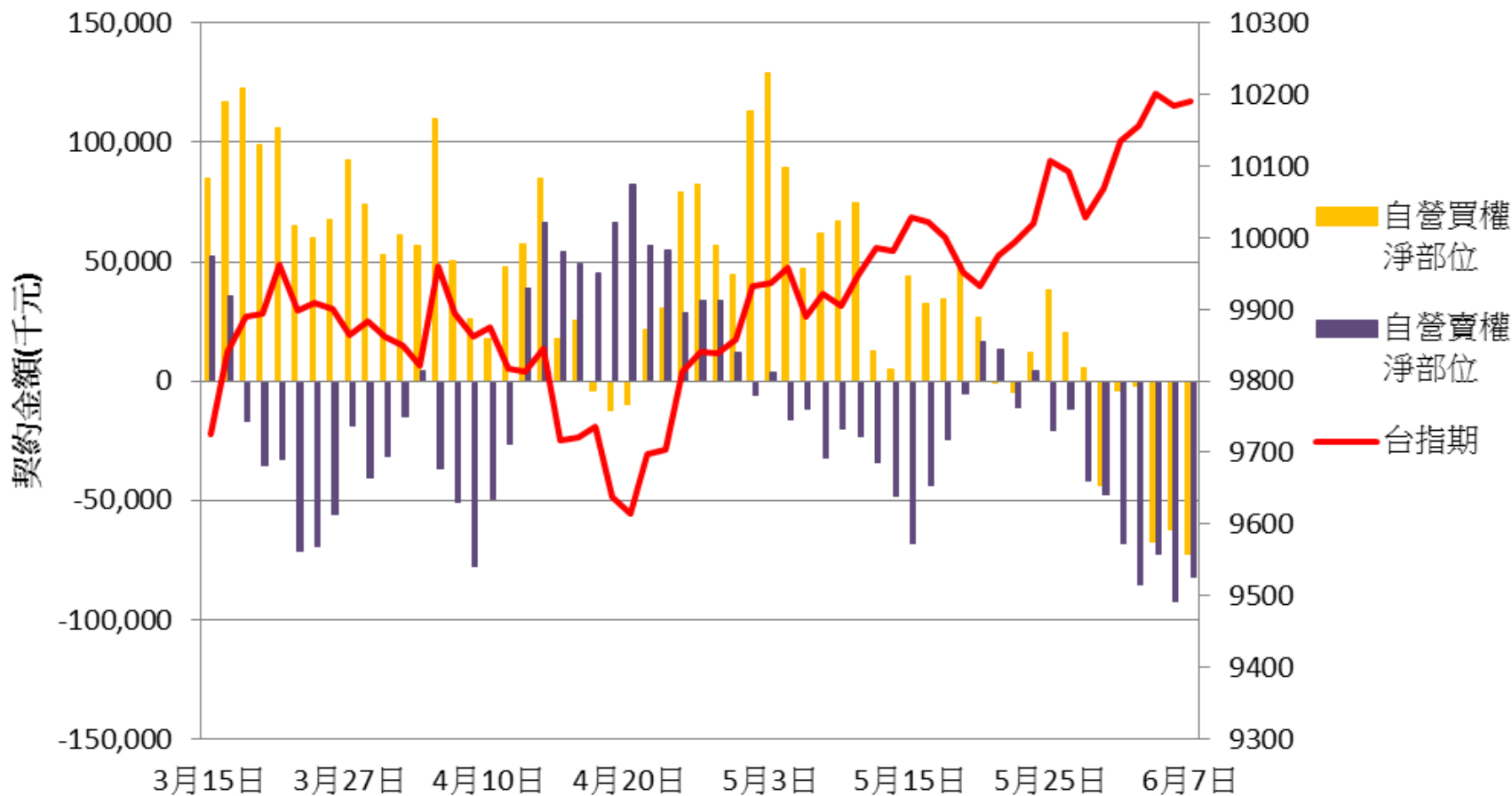


### 外資台指期與選擇權淨部位契約金額V.S台指期

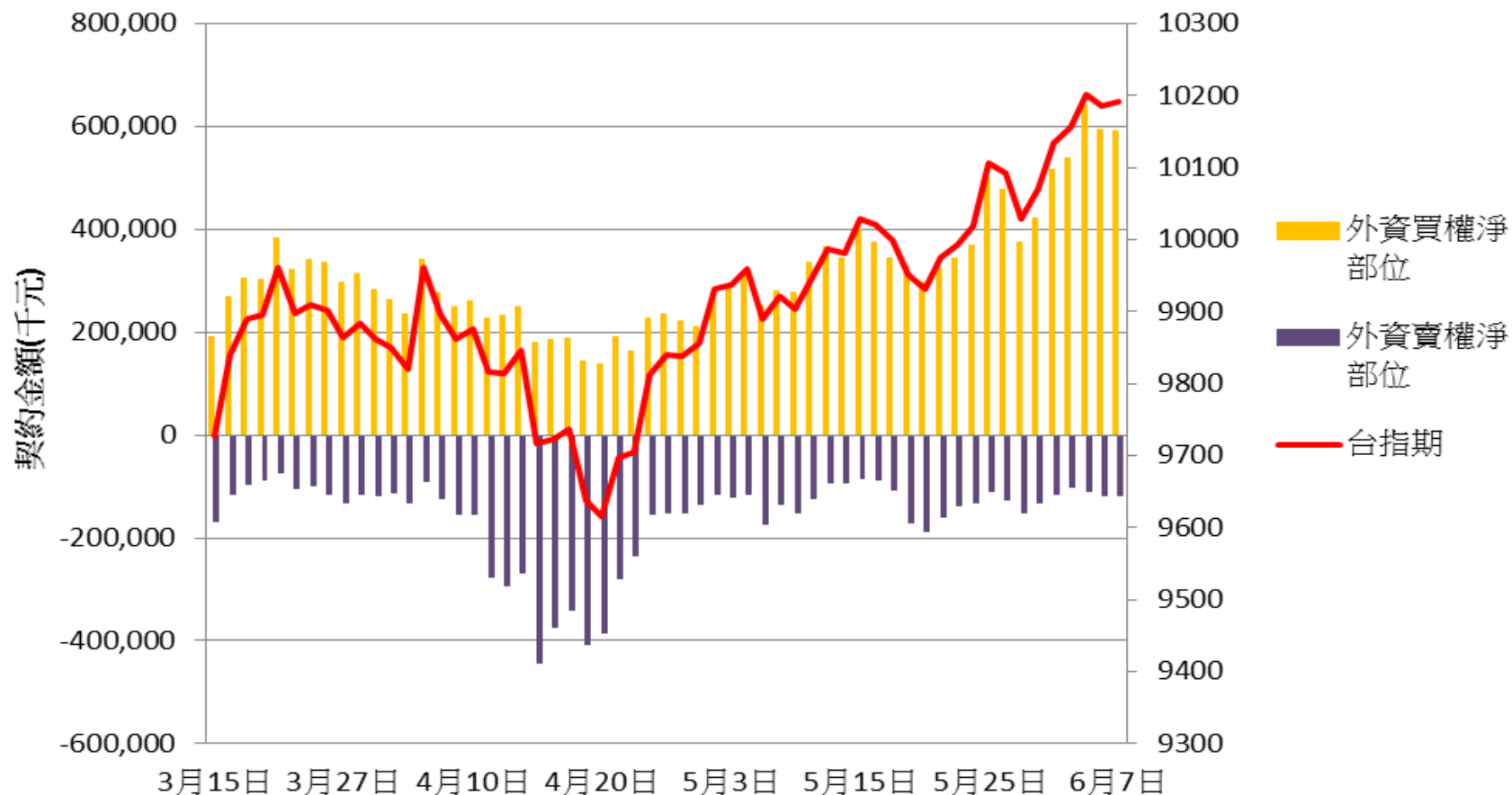




自營買賣權淨部位契約金額V.S台指期

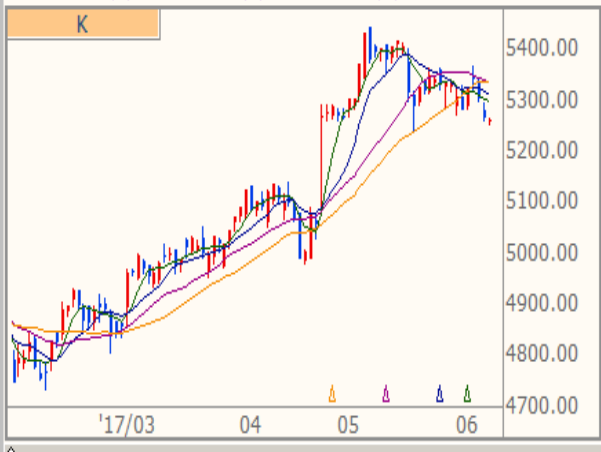


外資買賣權淨部位契約金額V.S台指期



技術分析

CAC 法國巴黎(日) ↓ 5262.680 -6.540 -0.12%  
09:22:15 開 5261.420 高 5269.160 低 5254.030



技術分析

DAX 法蘭克福(日) 12665.900 -24.220 -0.19%  
09:22:18 開 12659.970 高 12671.220 低 12640.520



技術分析

NKI 日經指數(日) ↑ 19984.620 +4.720 +0.02%  
15:00:01 開 19951.680 高 20023.240 低 19908.070



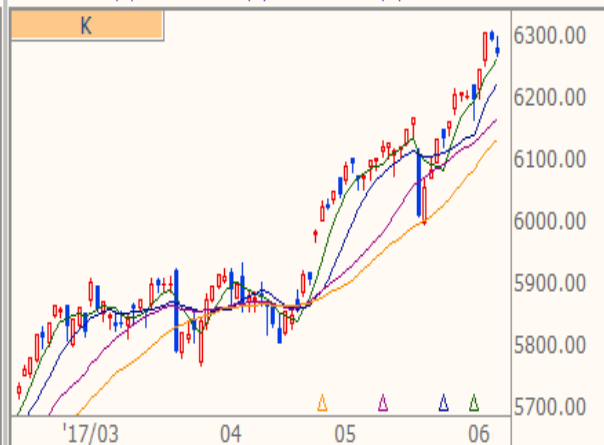
技術分析

FTH 時報金融(日) ↑ 7516.380 -8.570 -0.11%  
08:22:18 開 7524.950 高 7527.430 低 7506.710



技術分析

NAS NASDAQ(日) ↑ 6275.060 -20.620 -0.33%  
16:00:00 開 6281.880 高 6304.210 低 6269.860



技術分析

DJI 道瓊指數(日) 21136.230 -47.810 -0.23%  
16:38:09 開 21145.480 高 21180.470 低 21118.460

