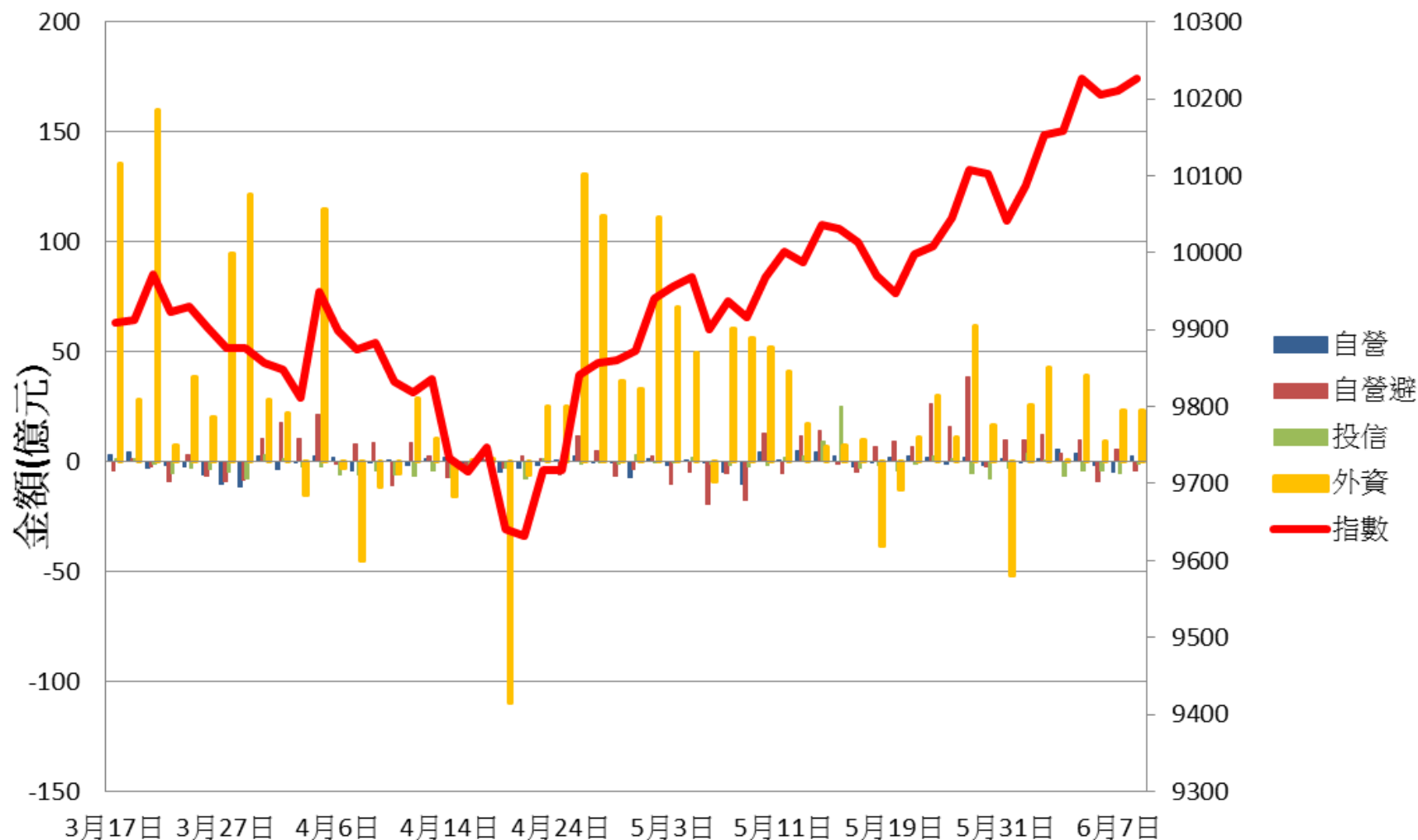
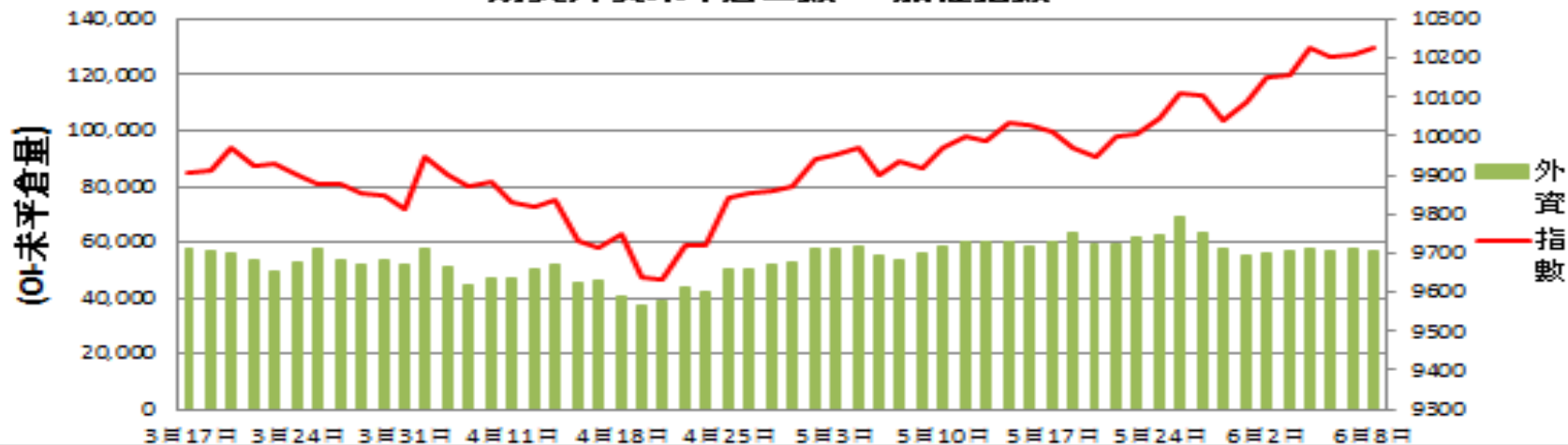


證券三大法人每日買賣超 V.S 加權指數



期貨外資未平倉口數 V.S 加權指數



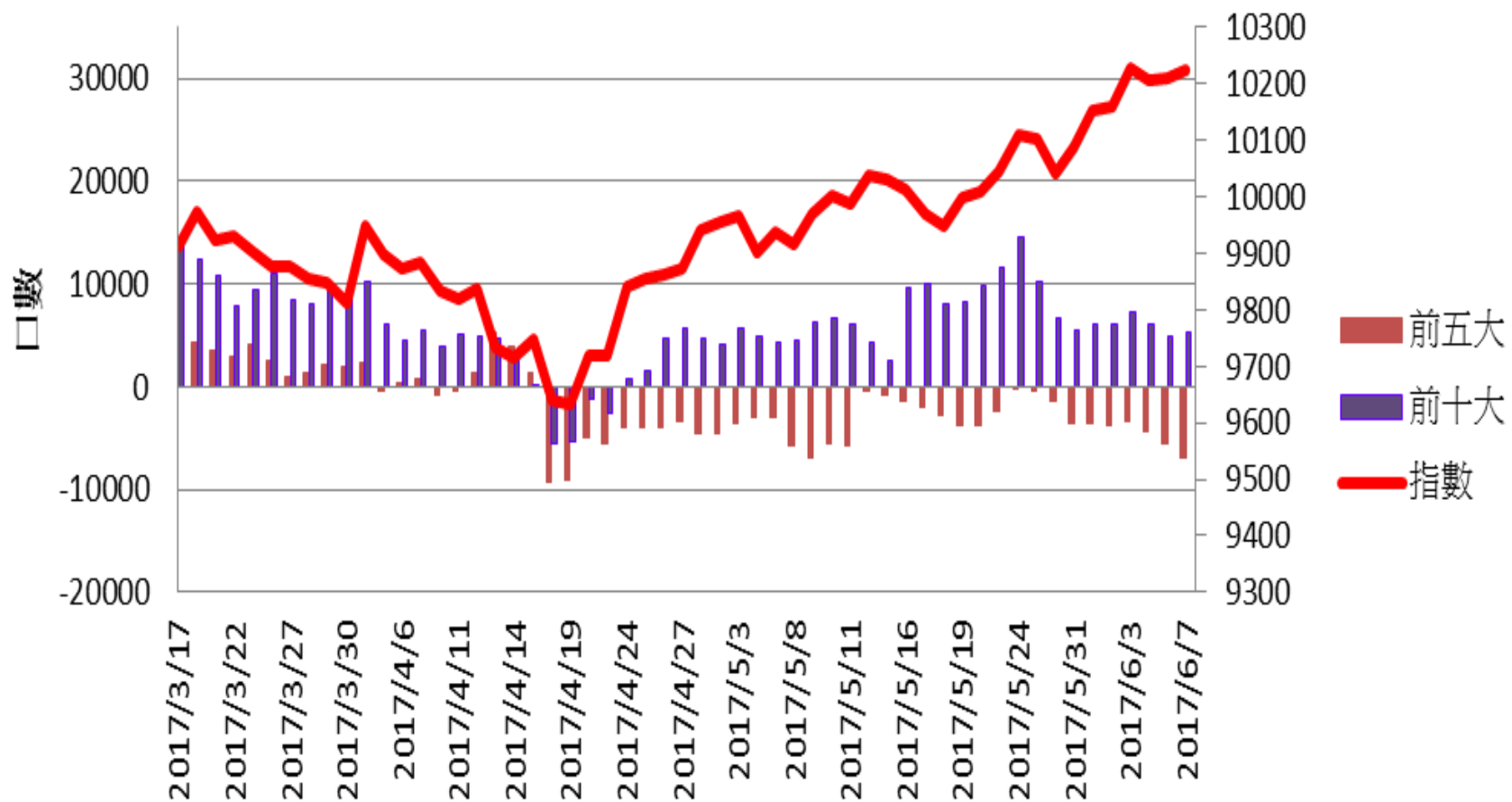
期貨投信未平倉口數



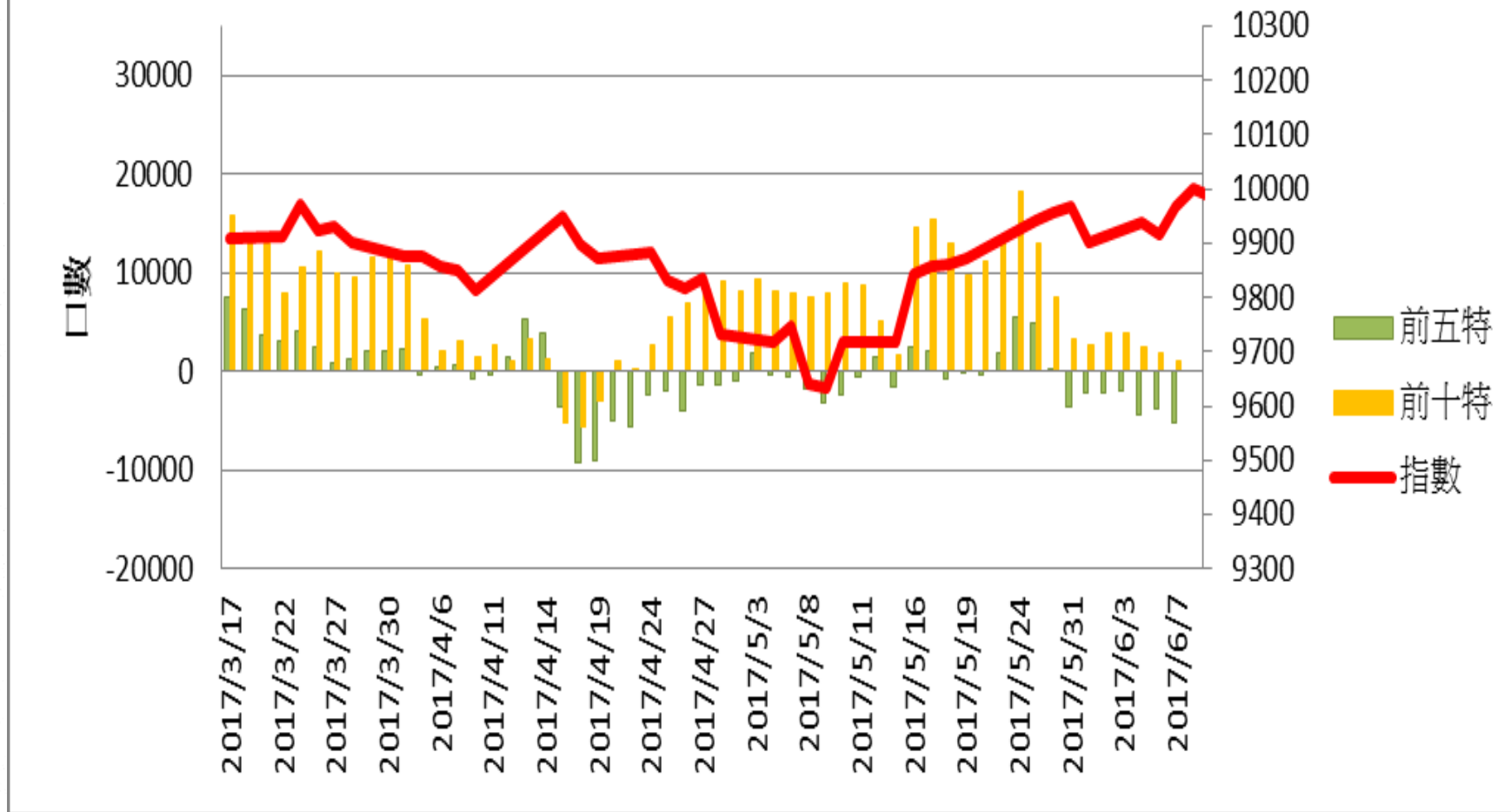
期貨自營未平倉口數



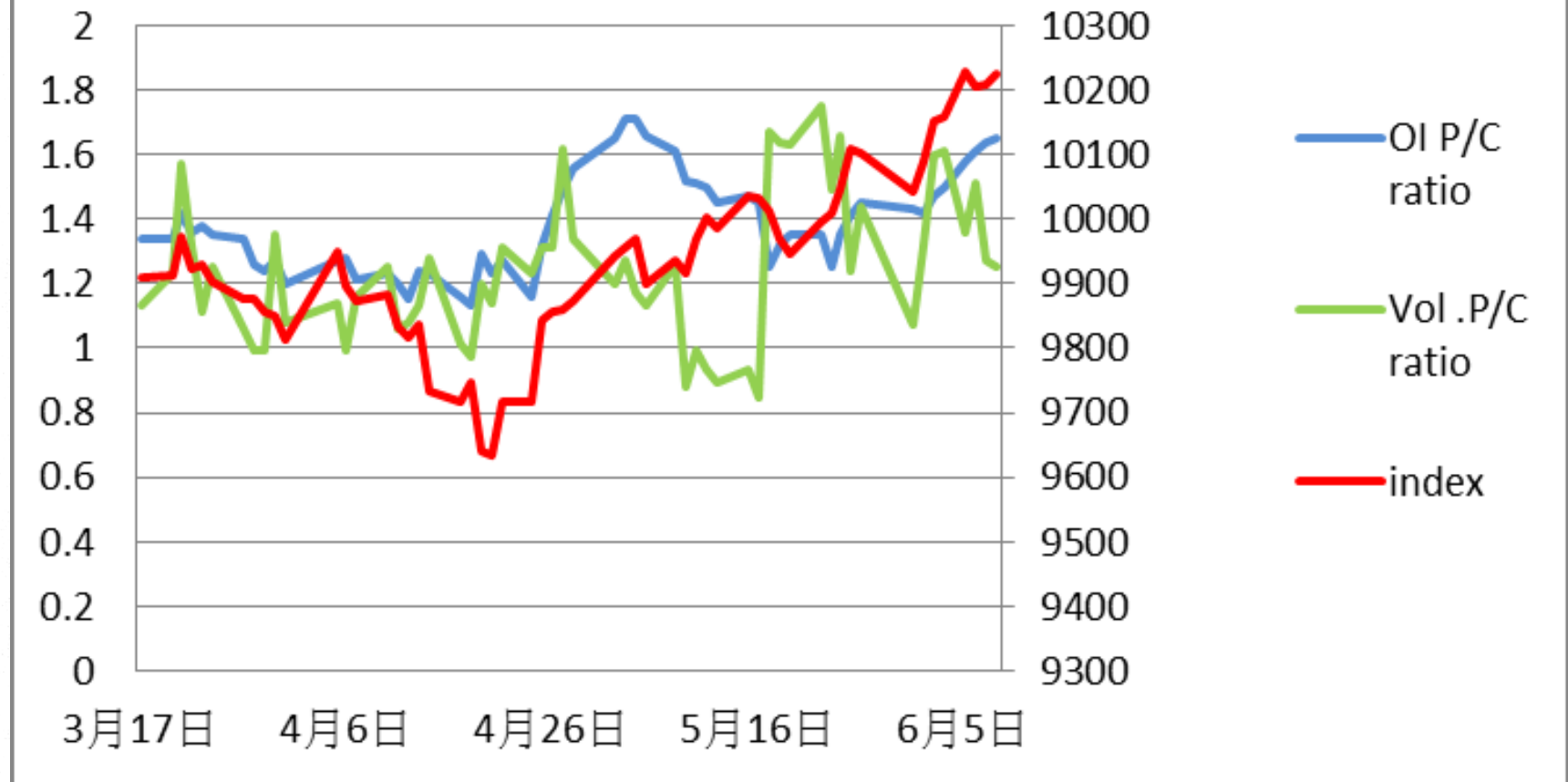
加權指數V.S期貨大額法人未平倉口數



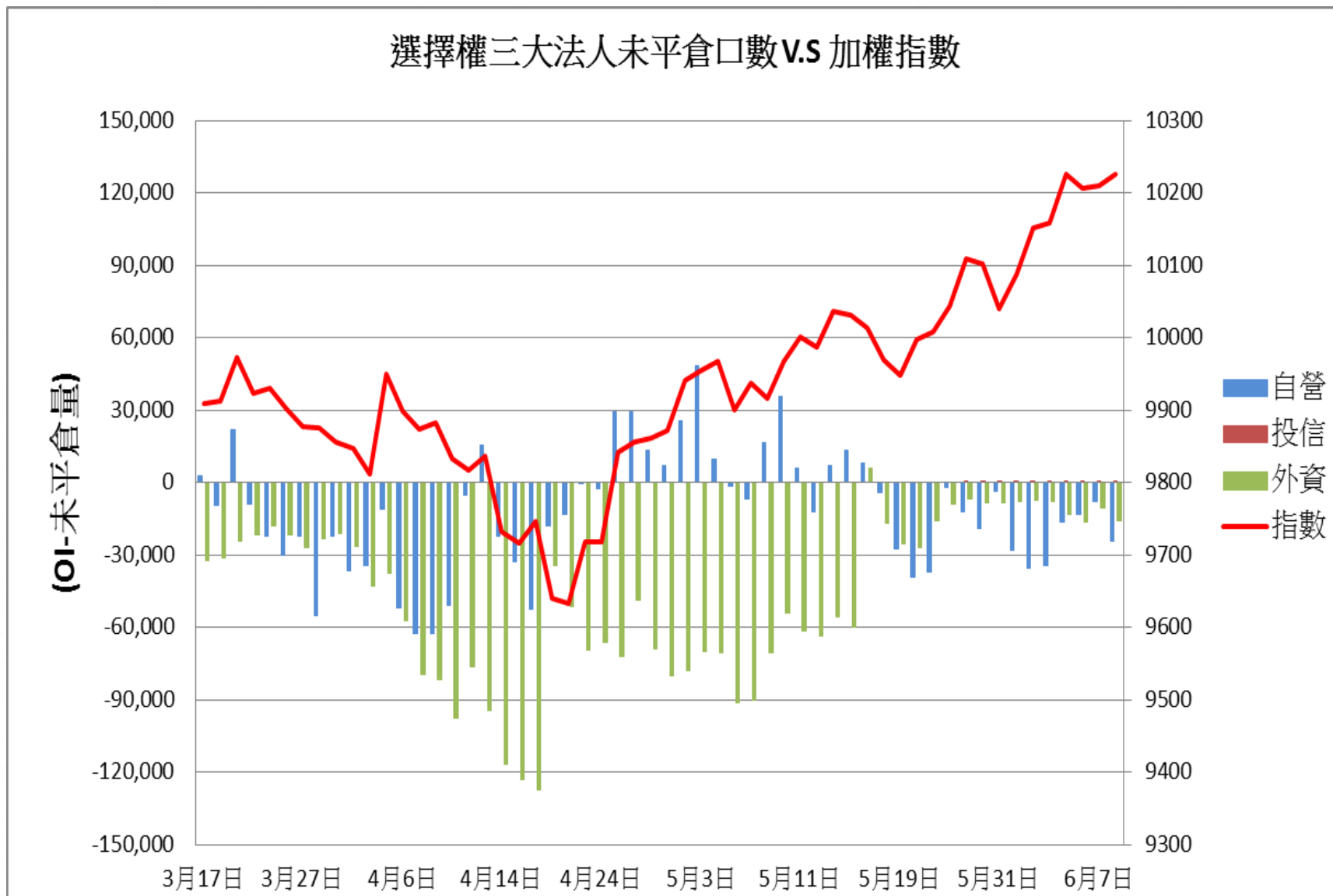
加權指數V.S期貨特定法人未平倉口數



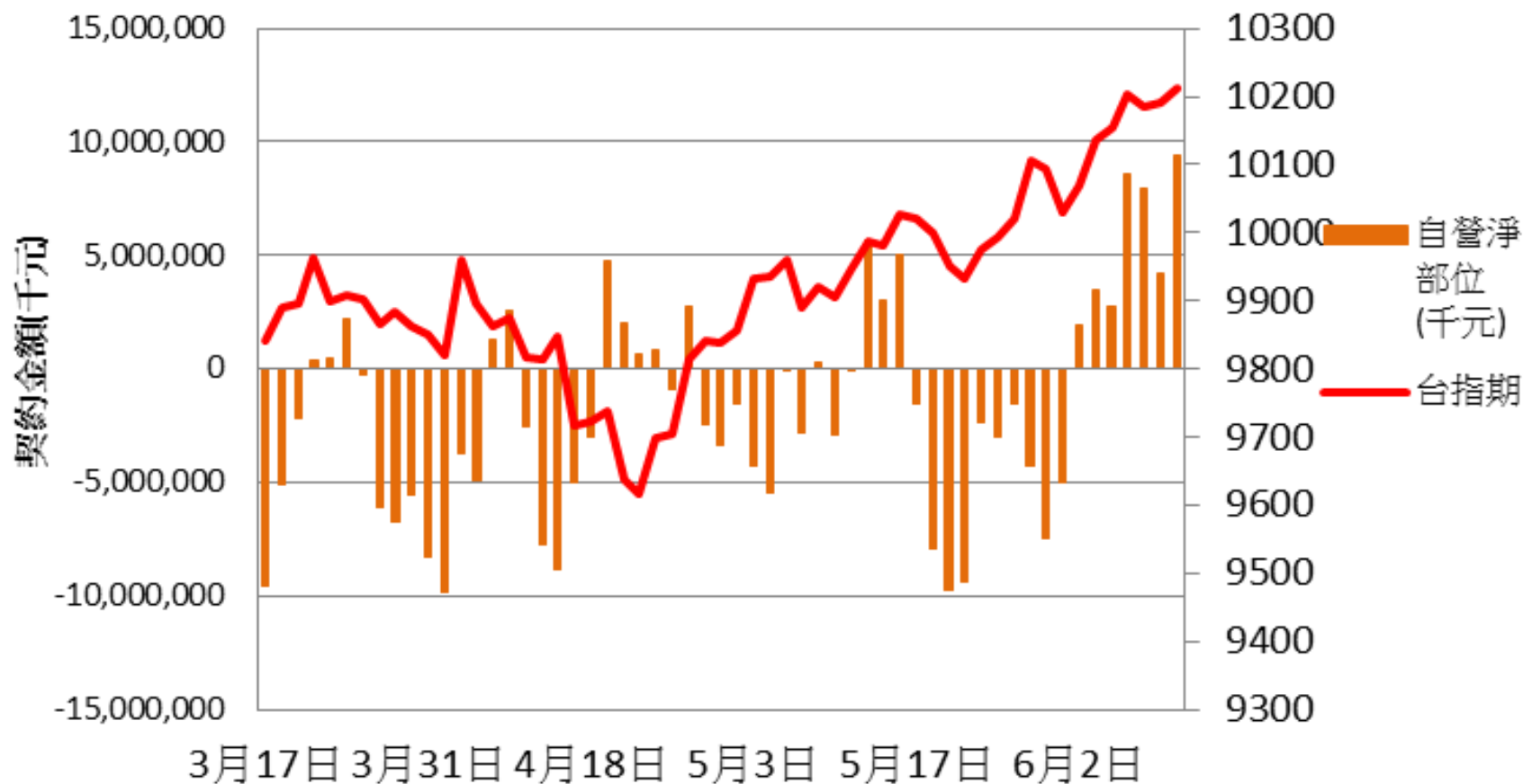
加權指數V.S未平倉量P/Cratio V.S 成交量P/C ratio



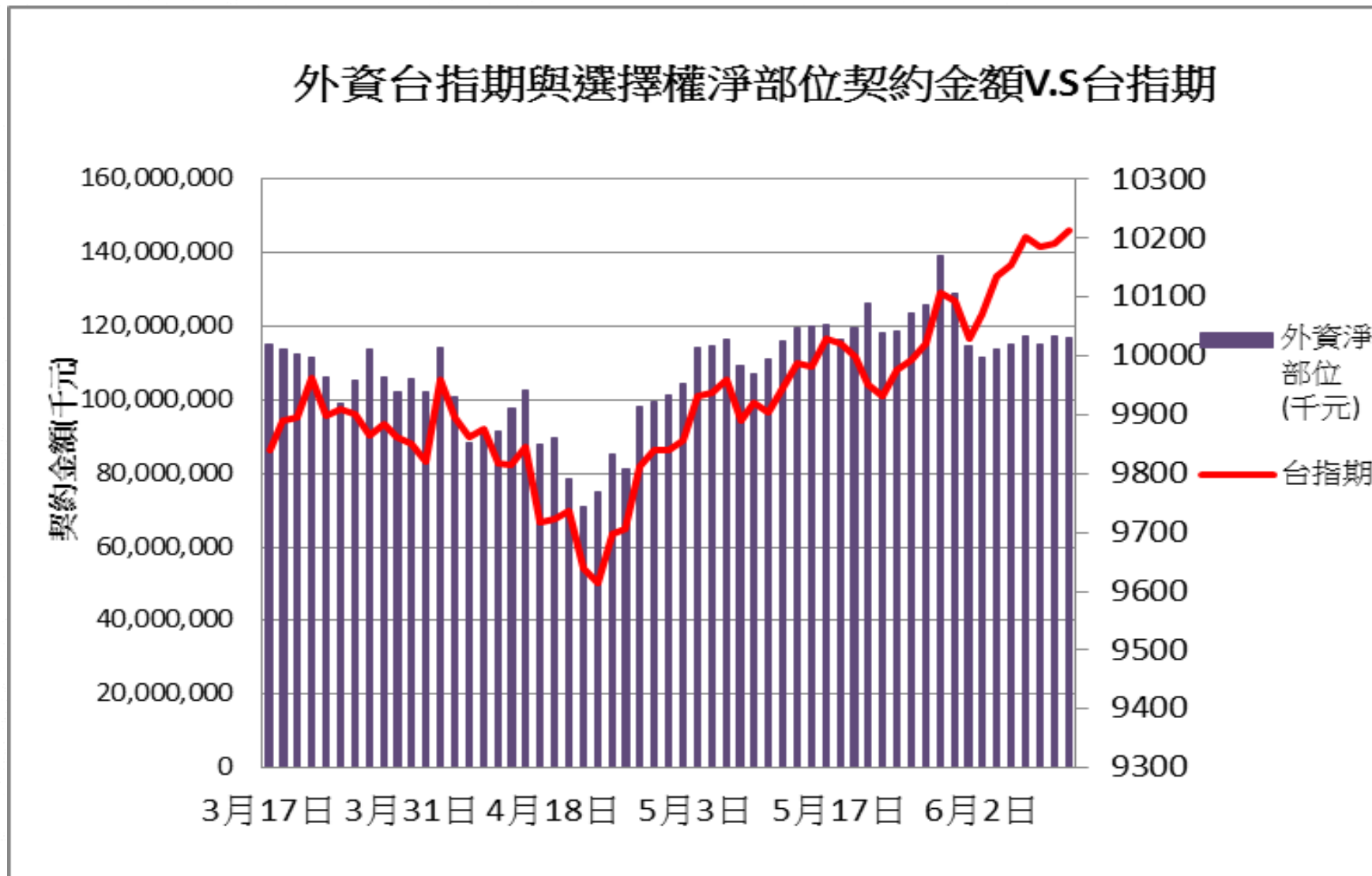
選擇權三大法人未平倉口數 V.S 加權指數



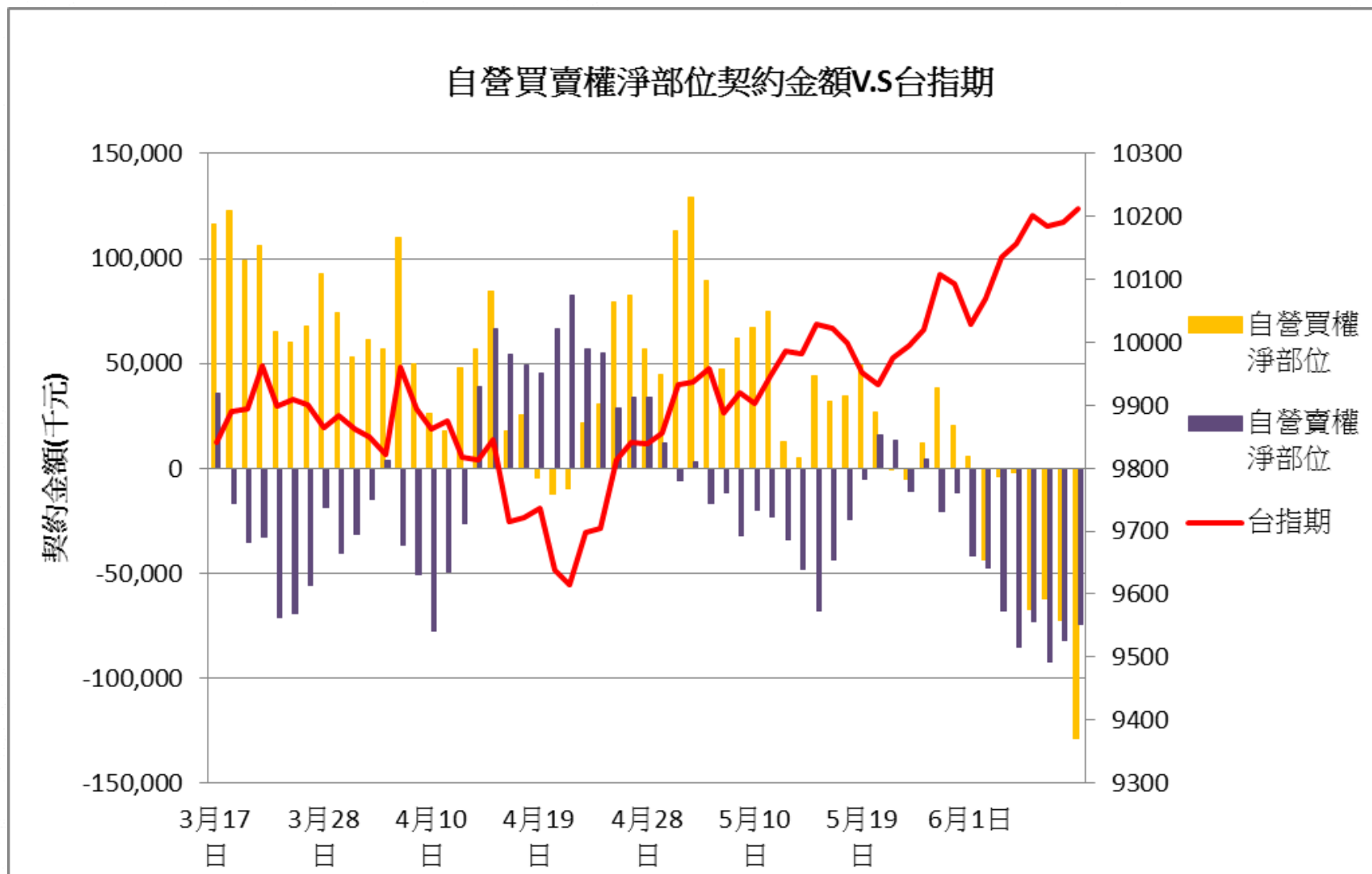
自營台指期與選擇權淨部位契約金額V.S台指期



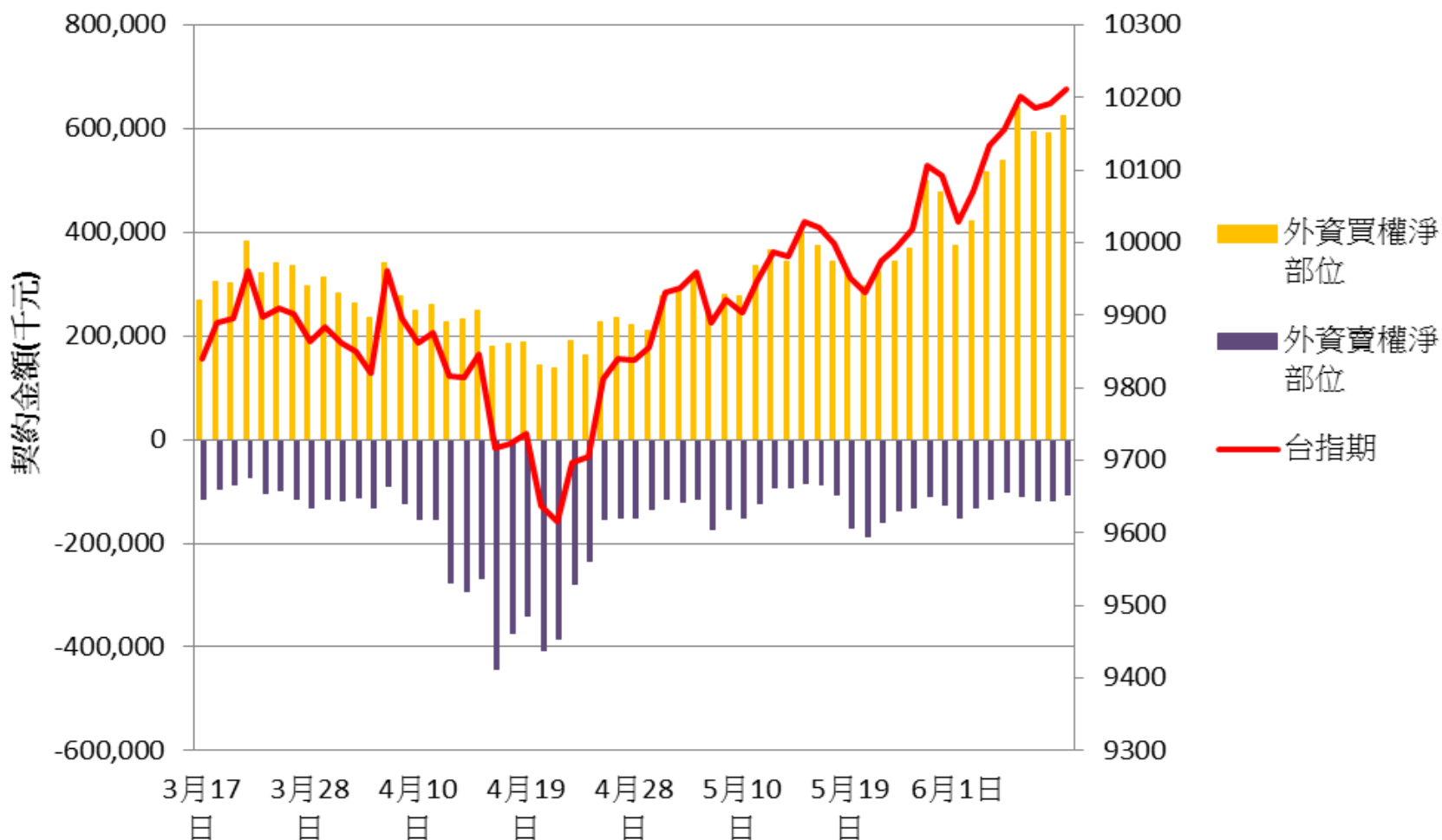
外資台指期與選擇權淨部位契約金額V.S台指期



自營買賣權淨部位契約金額V.S台指期



外資買賣權淨部位契約金額V.S台指期







技術分析

TWD 台幣(日) 買 30.080 賣 30.092 -0.017 -0.0565% 01:09:00



技術分析

TWI 加權指數(日) ↑ 10259.710 +33.930 +0.33% 09:09:45 開 10238.550 高 10268.370 低 10238.550

