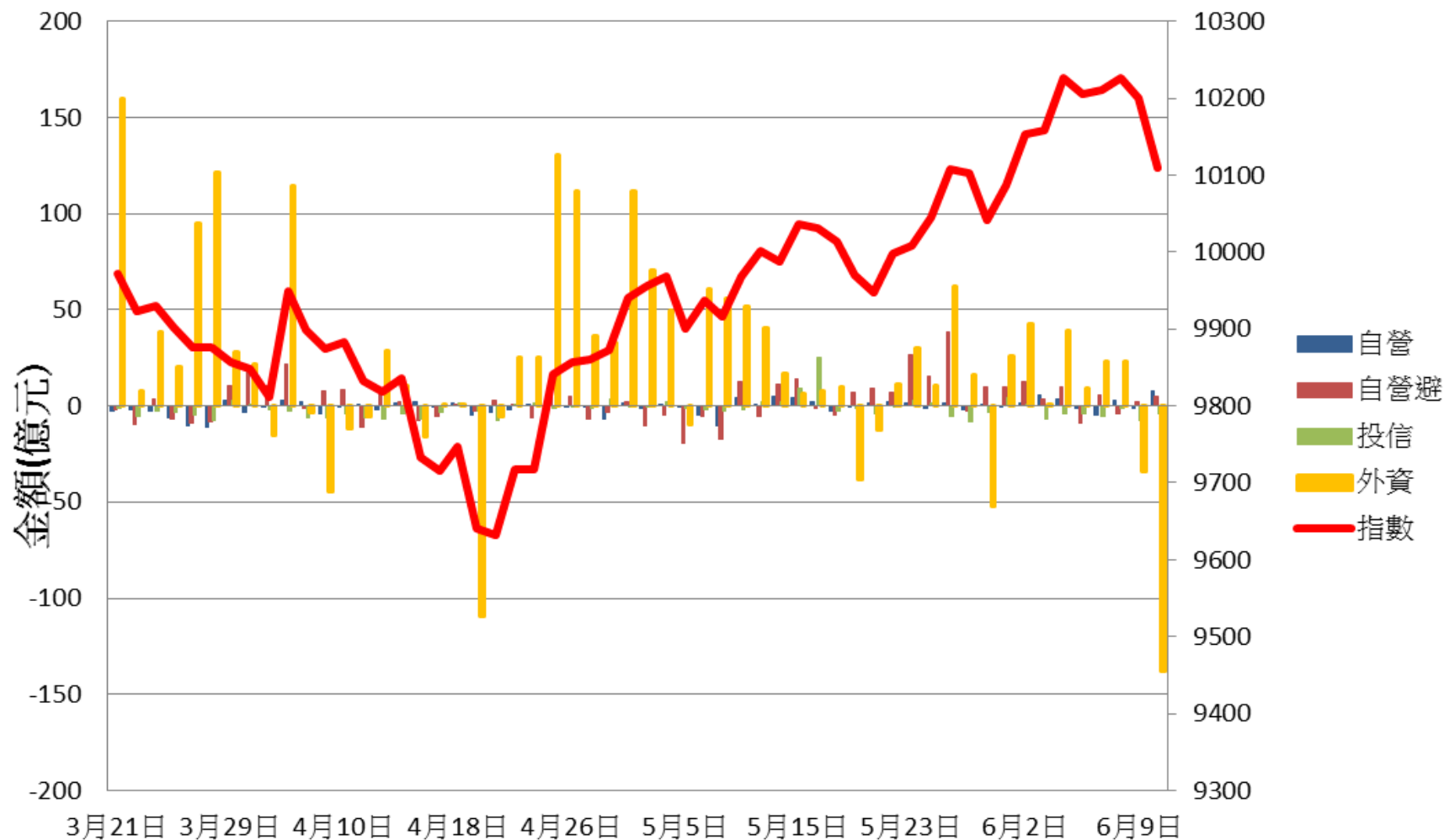
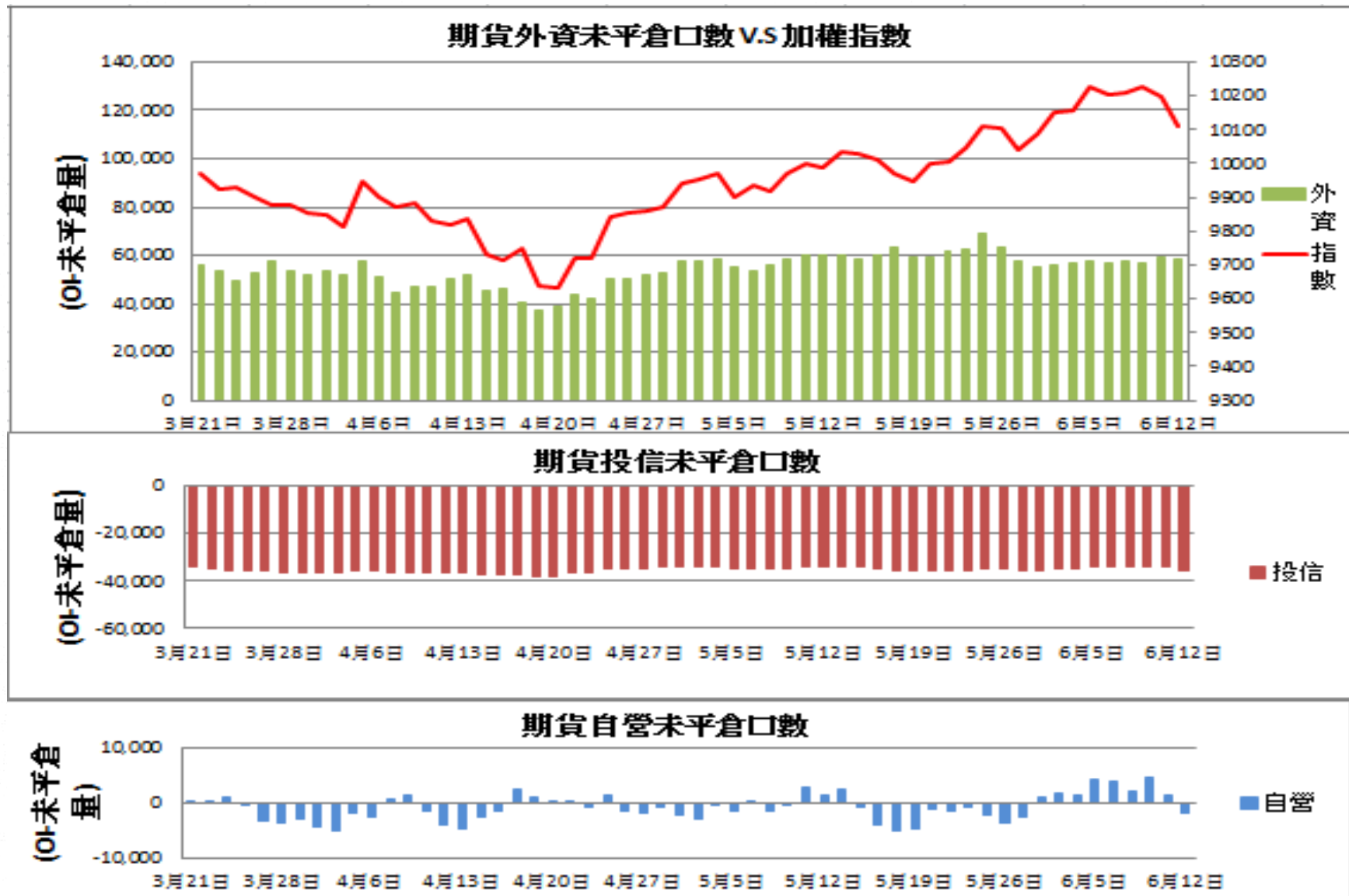
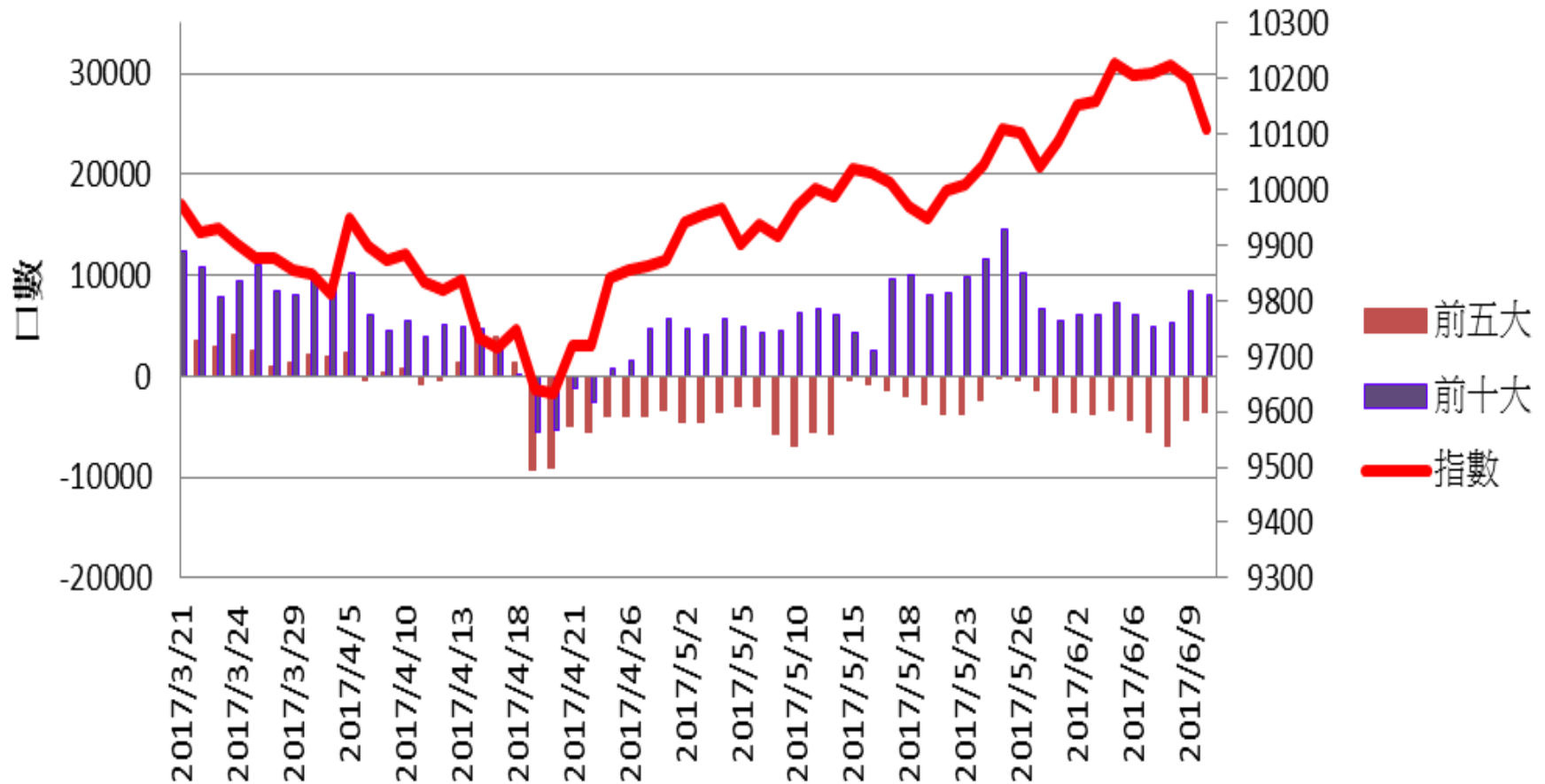


證券三大法人每日買賣超 V.S 加權指數

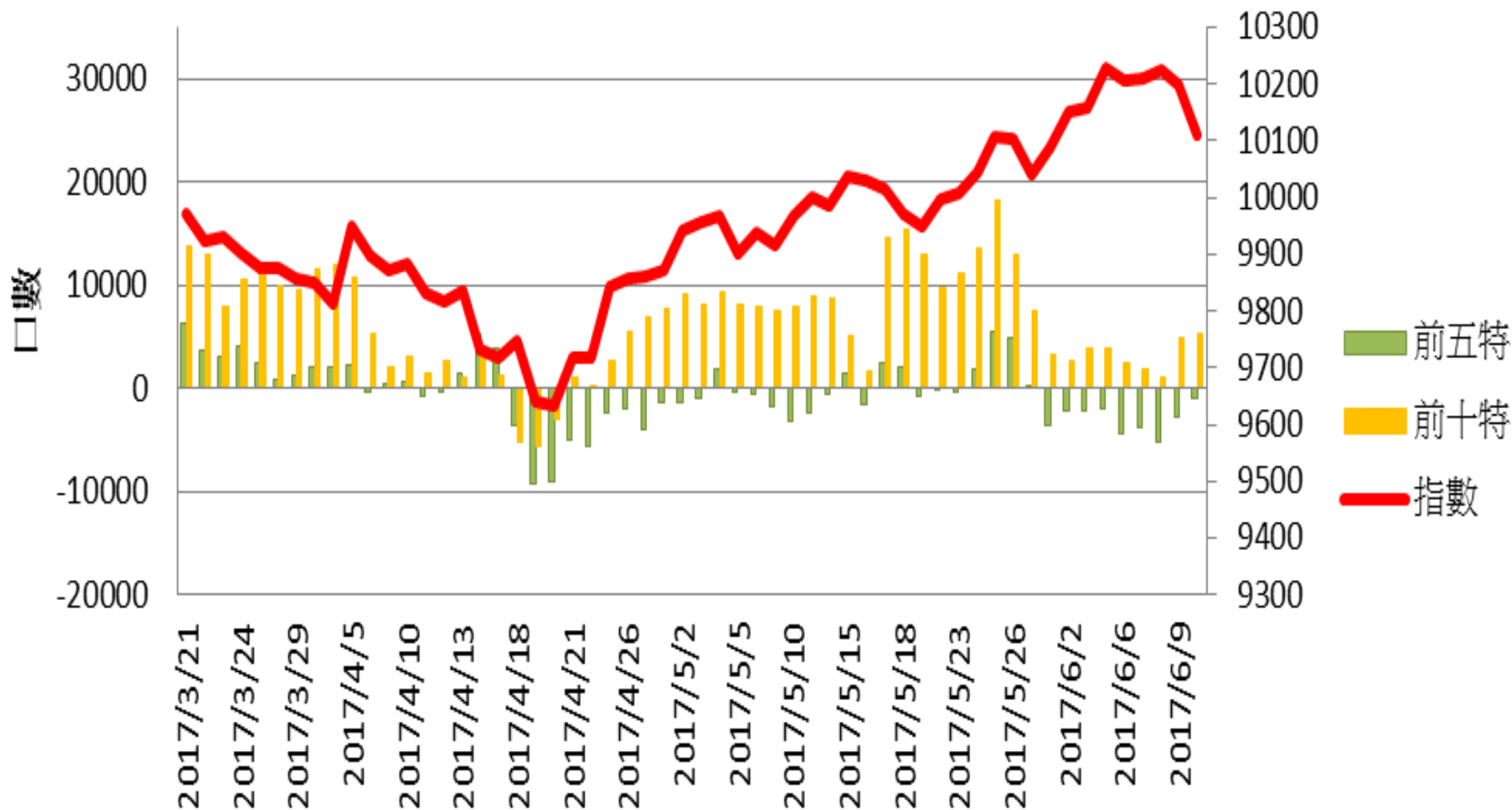




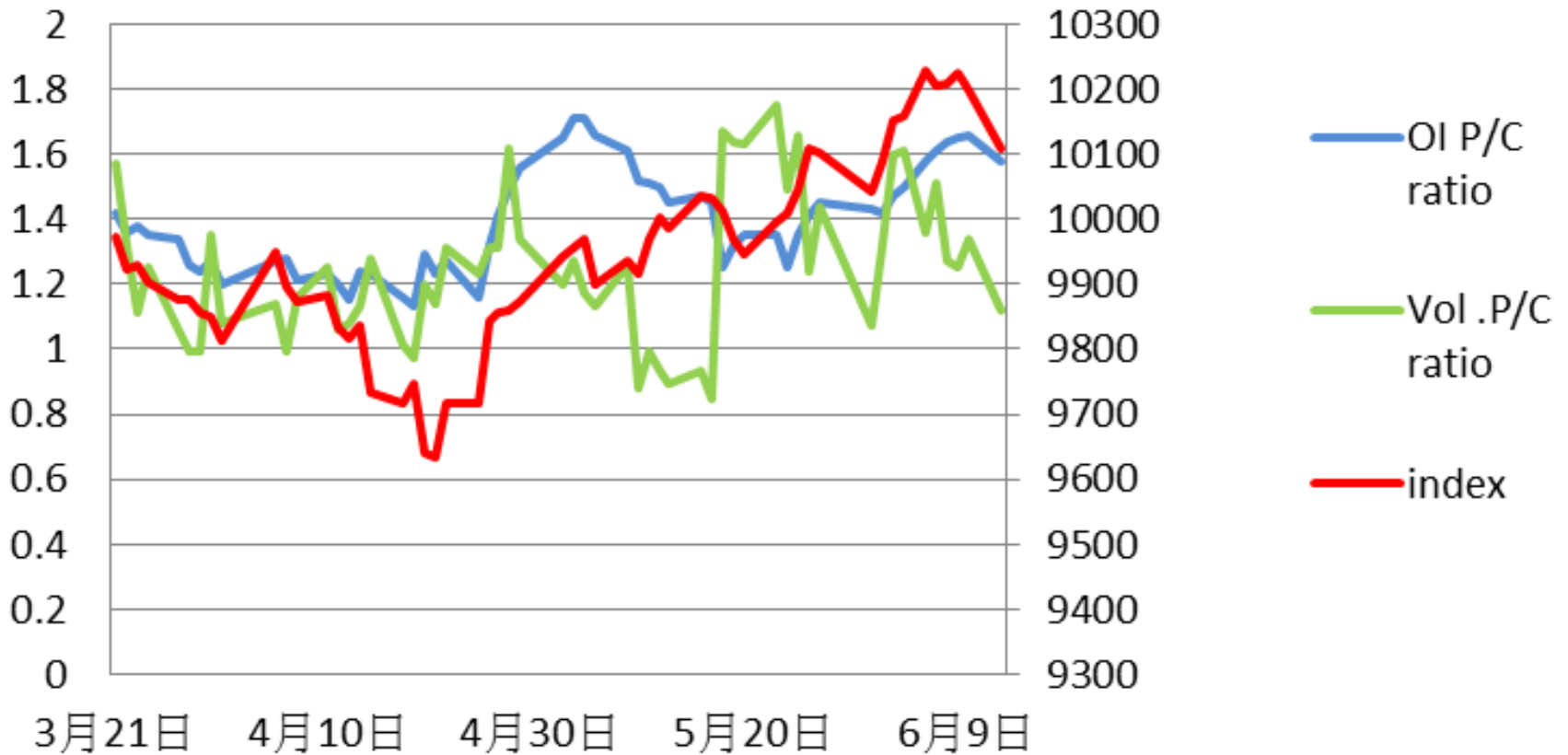
## 加權指數V.S期貨大額法人未平倉口數



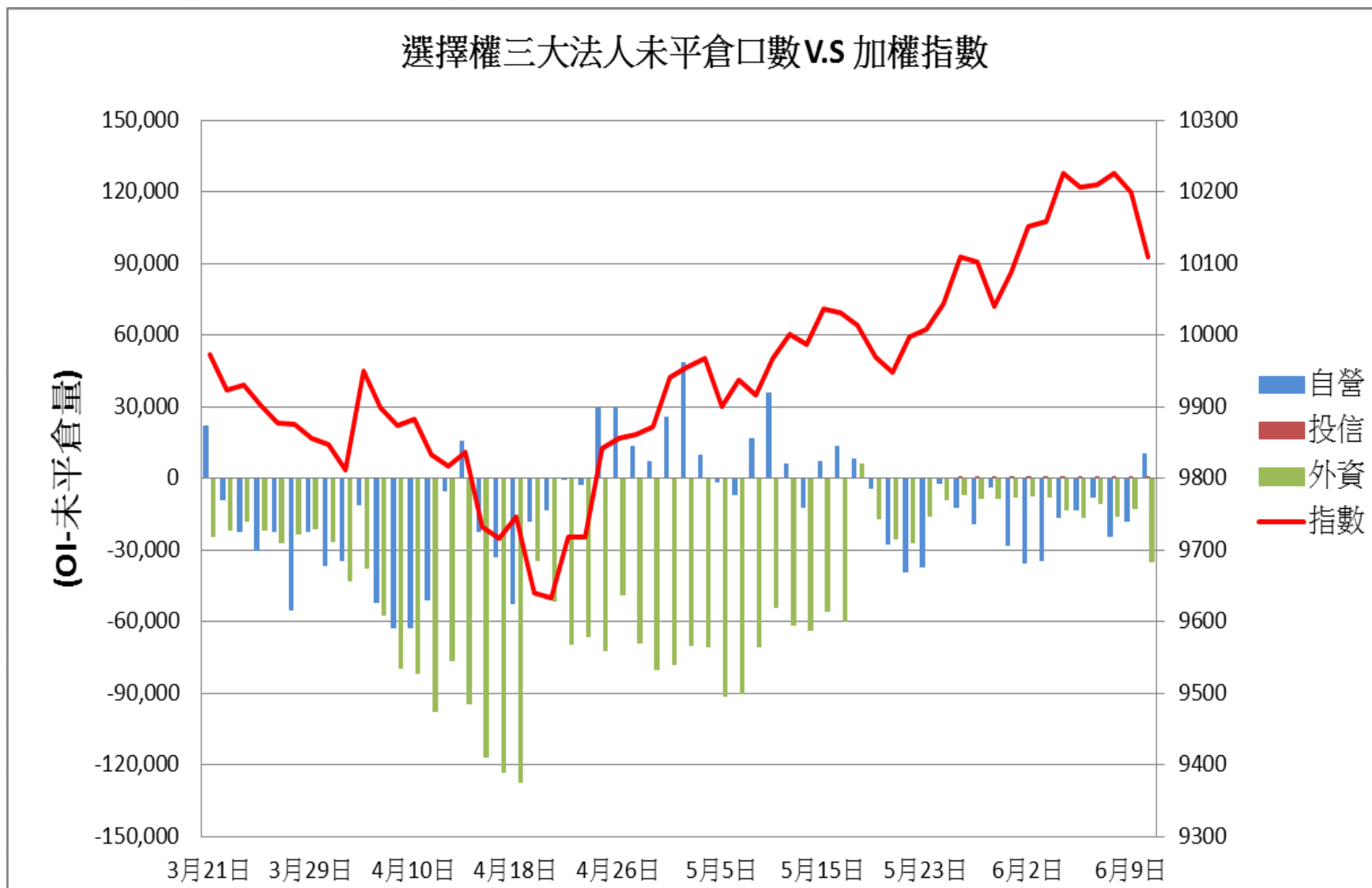
## 加權指數V.S期貨特定法人未平倉口數



## 加權指數V.S未平倉量P/Cratio V.S 成交量P/C ratio

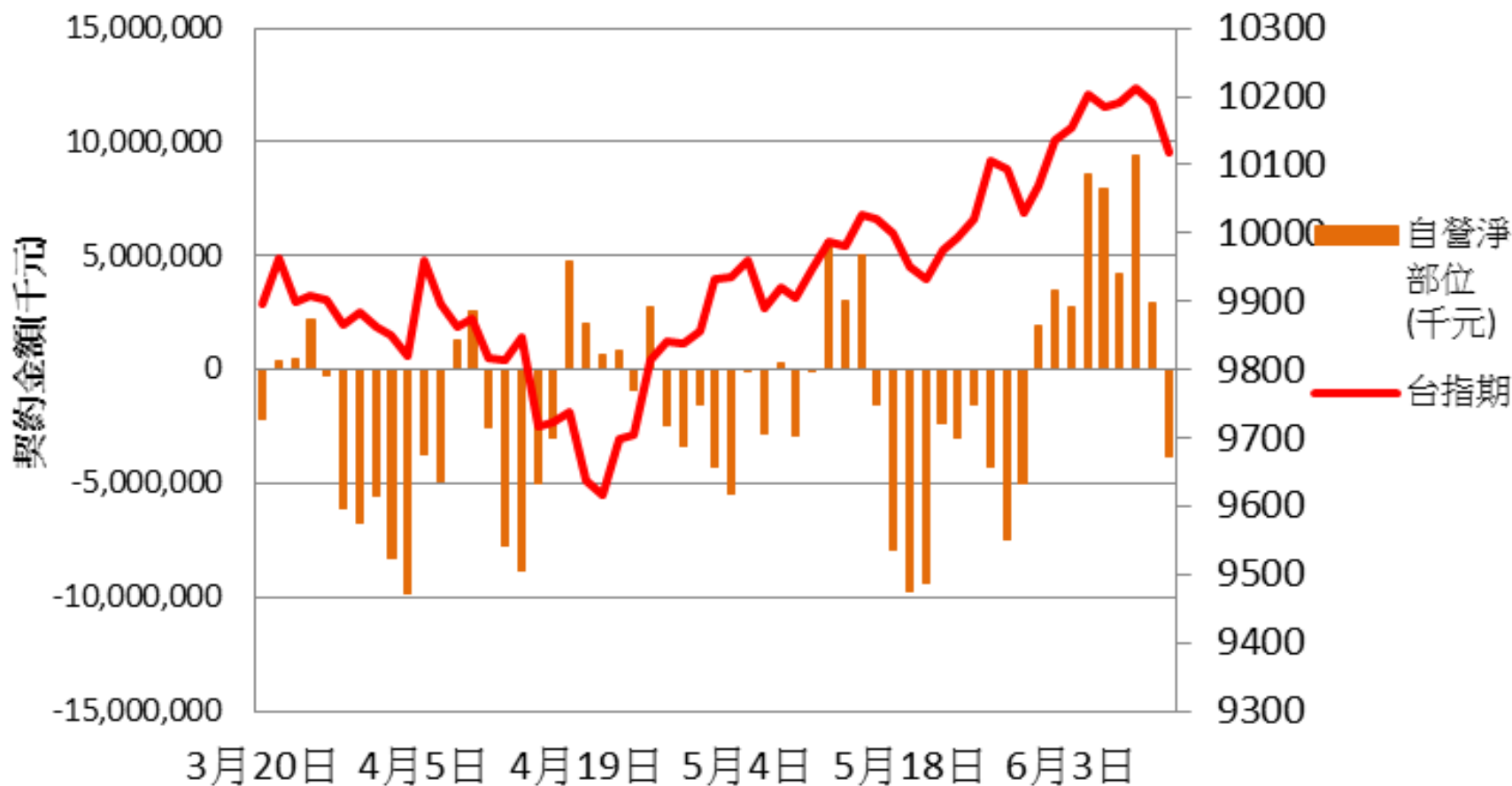


選擇權三大法人未平倉口數 v.s 加權指數

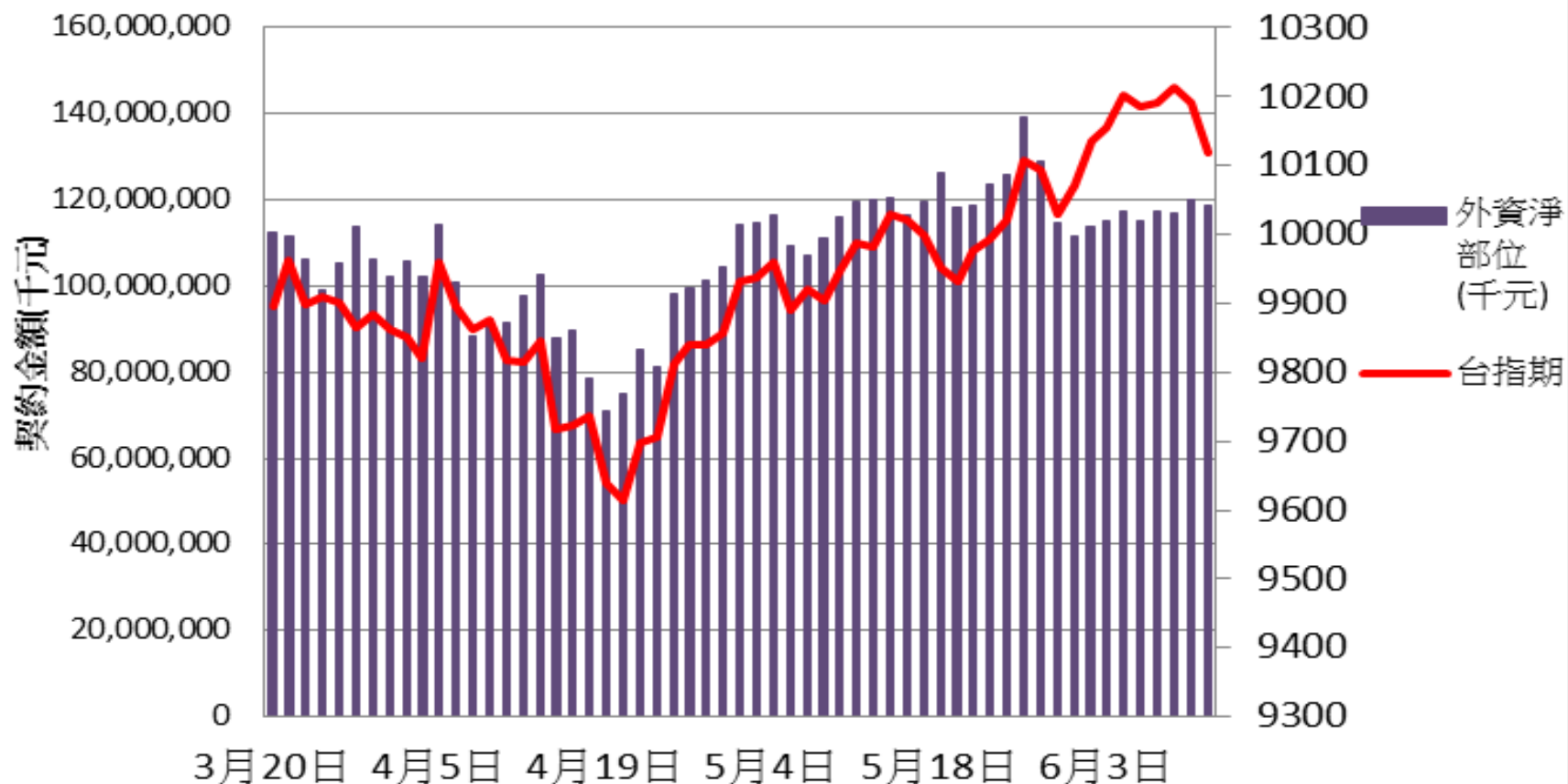


- 自營
- 投信
- 外資
- 指數

### 自營台指期與選擇權淨部位契約金額V.S台指期

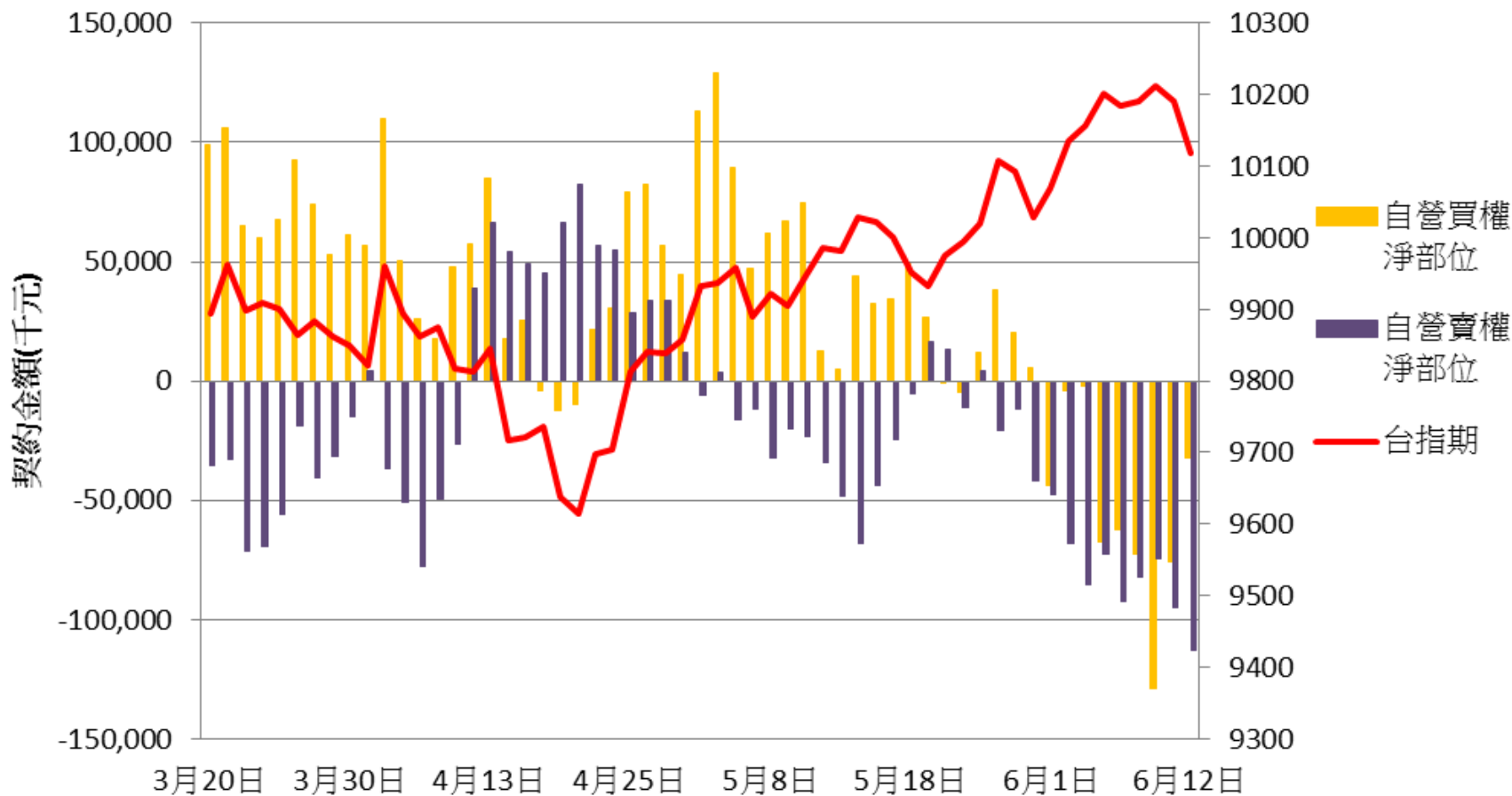


### 外資台指期與選擇權淨部位契約金額V.S台指期

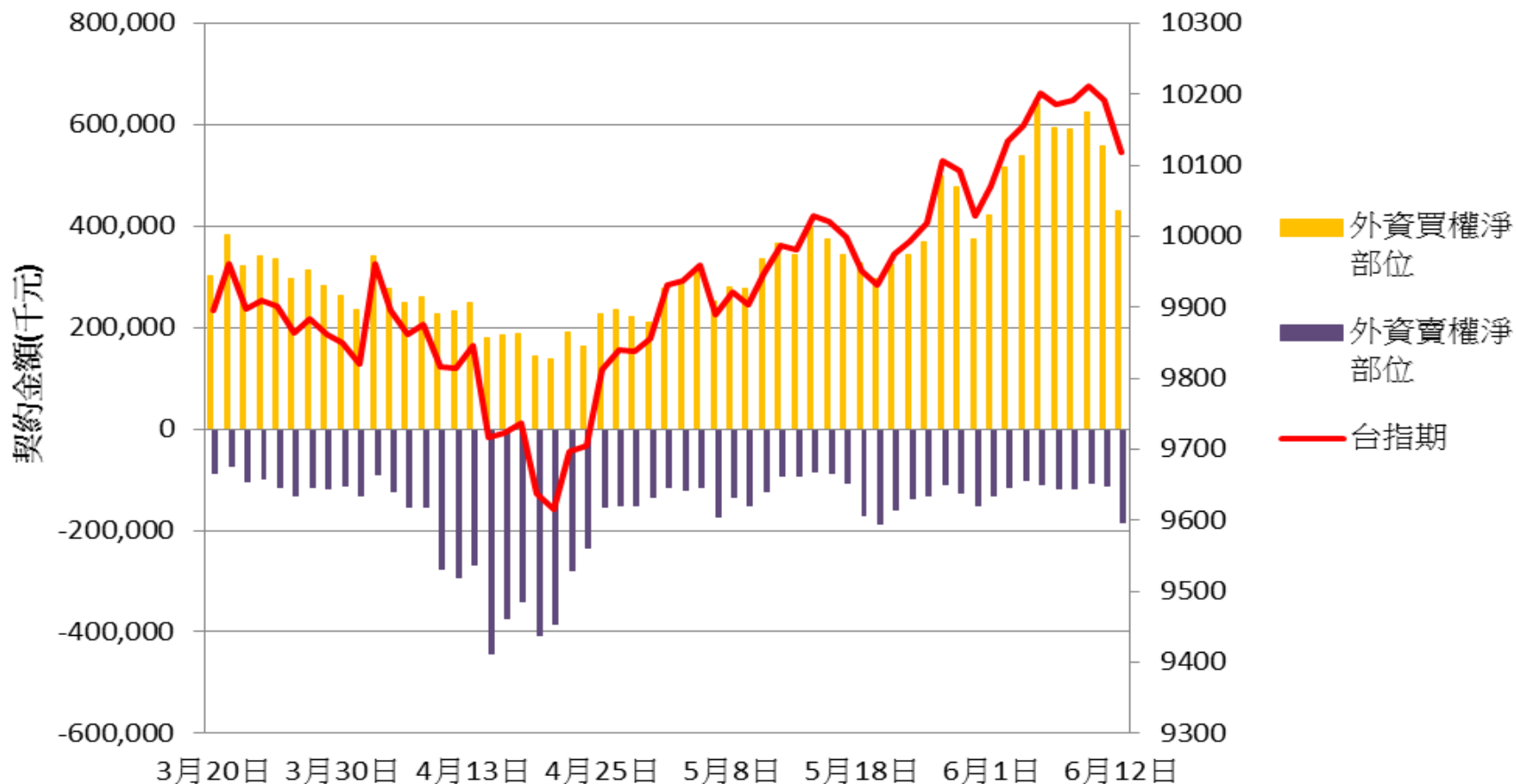




自營買賣權淨部位契約金額V.S台指期



外資買賣權淨部位契約金額V.S台指期



**技術分析**  
CAC 法國巴黎(日) ↑ 5276.790 -22.920 -0.43%  
09:04:30 開 5282.580 高 5294.330 低 5266.150



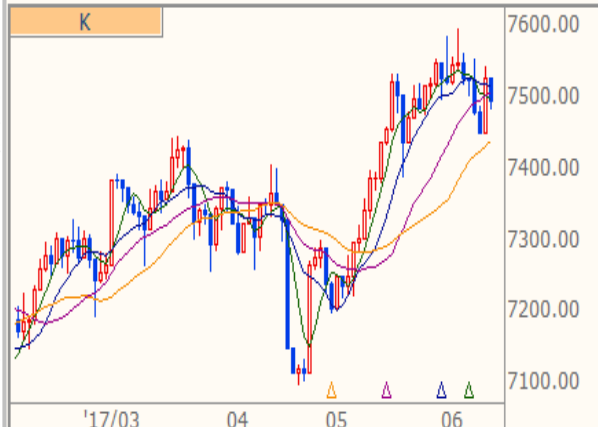
**技術分析**  
DAX 法蘭克福(日) ↑ 12763.510 -52.210 -0.41%  
09:04:31 開 12760.390 高 12763.510 低 12760.250



**技術分析**  
NKI 日經指數(日) ↓ 19908.580 -104.680 -0.52%  
15:00:01 開 19920.770 高 19949.070 低 19837.640



**技術分析**  
FTH 時報金融(日) ↑ 7495.230 -32.100 -0.43%  
08:04:31 開 7527.330 高 7527.330 低 7483.610



**技術分析**  
NAS NASDAQ(日) ↓ 6205.760 -116.000 -1.83%  
15:59:00 開 6330.250 高 6341.700 低 6137.680



**技術分析**  
DJI 道瓊指數(日) 21271.970 +89.440 +0.42%  
16:40:26 開 21208.960 高 21305.350 低 21159.770

