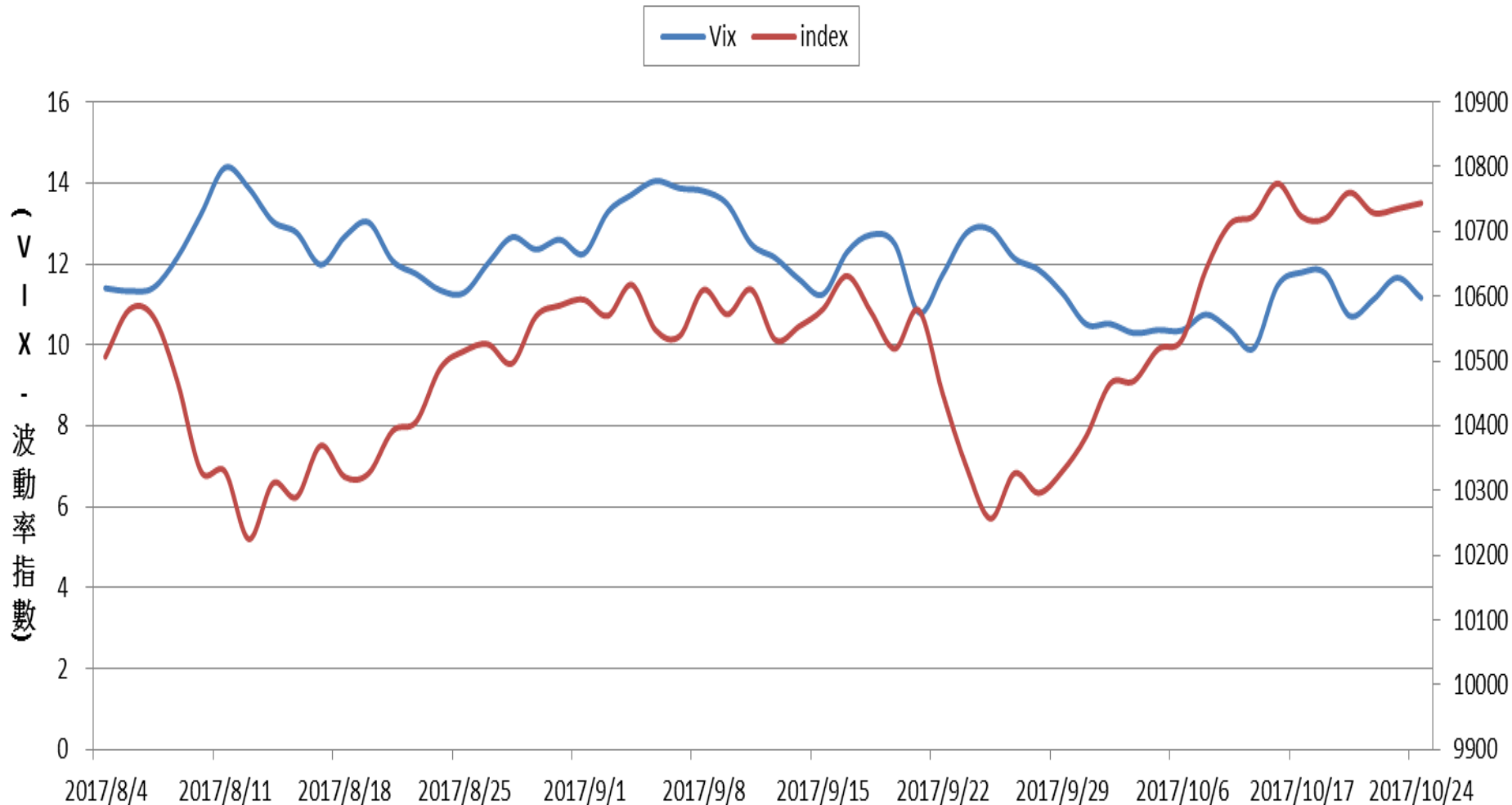
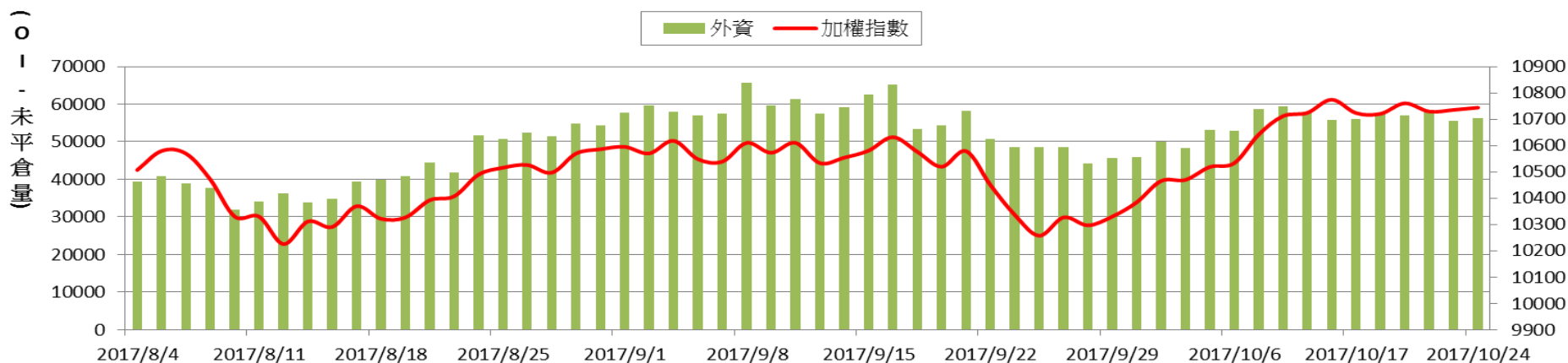


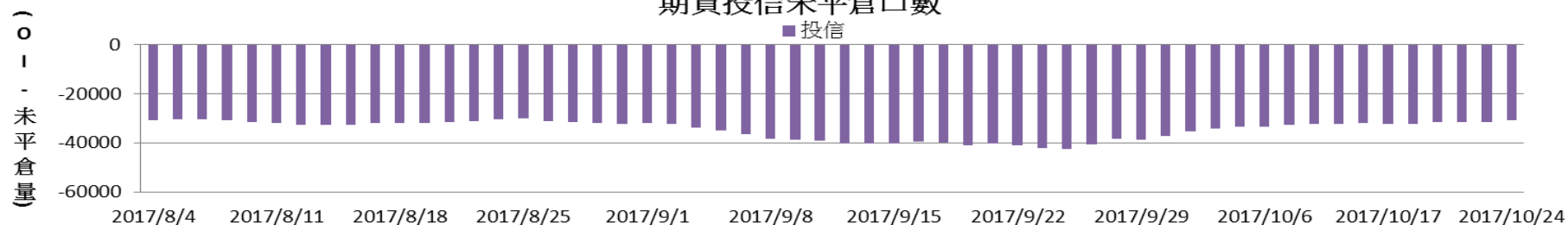
Vix指數 V.S 加權指數



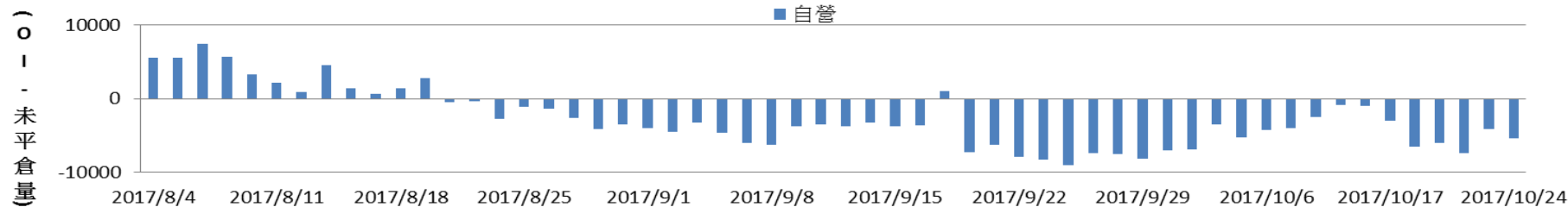
期貨外資未平倉口數V.S 加權指數



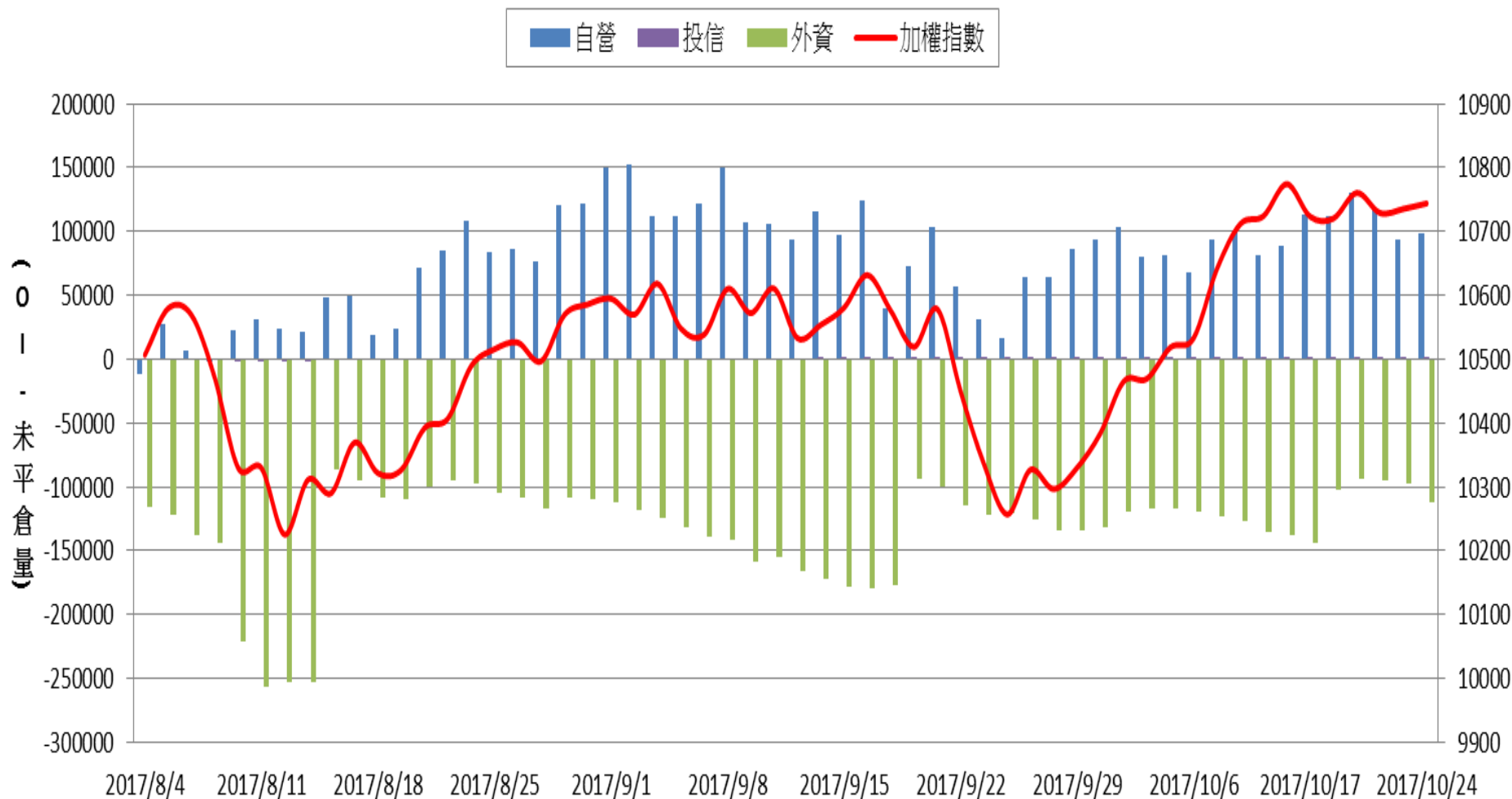
期貨投信未平倉口數



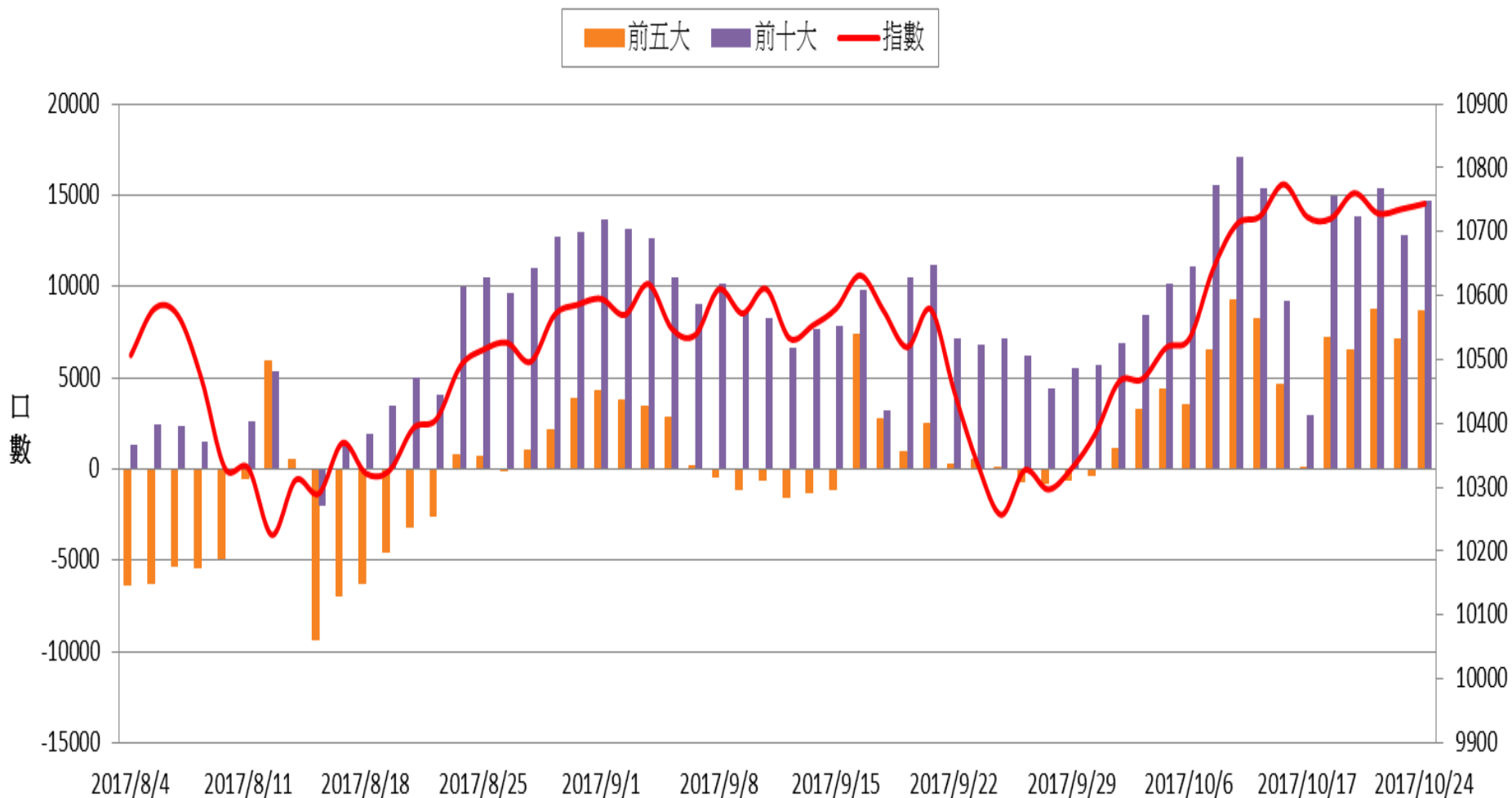
期貨自營未平倉口數



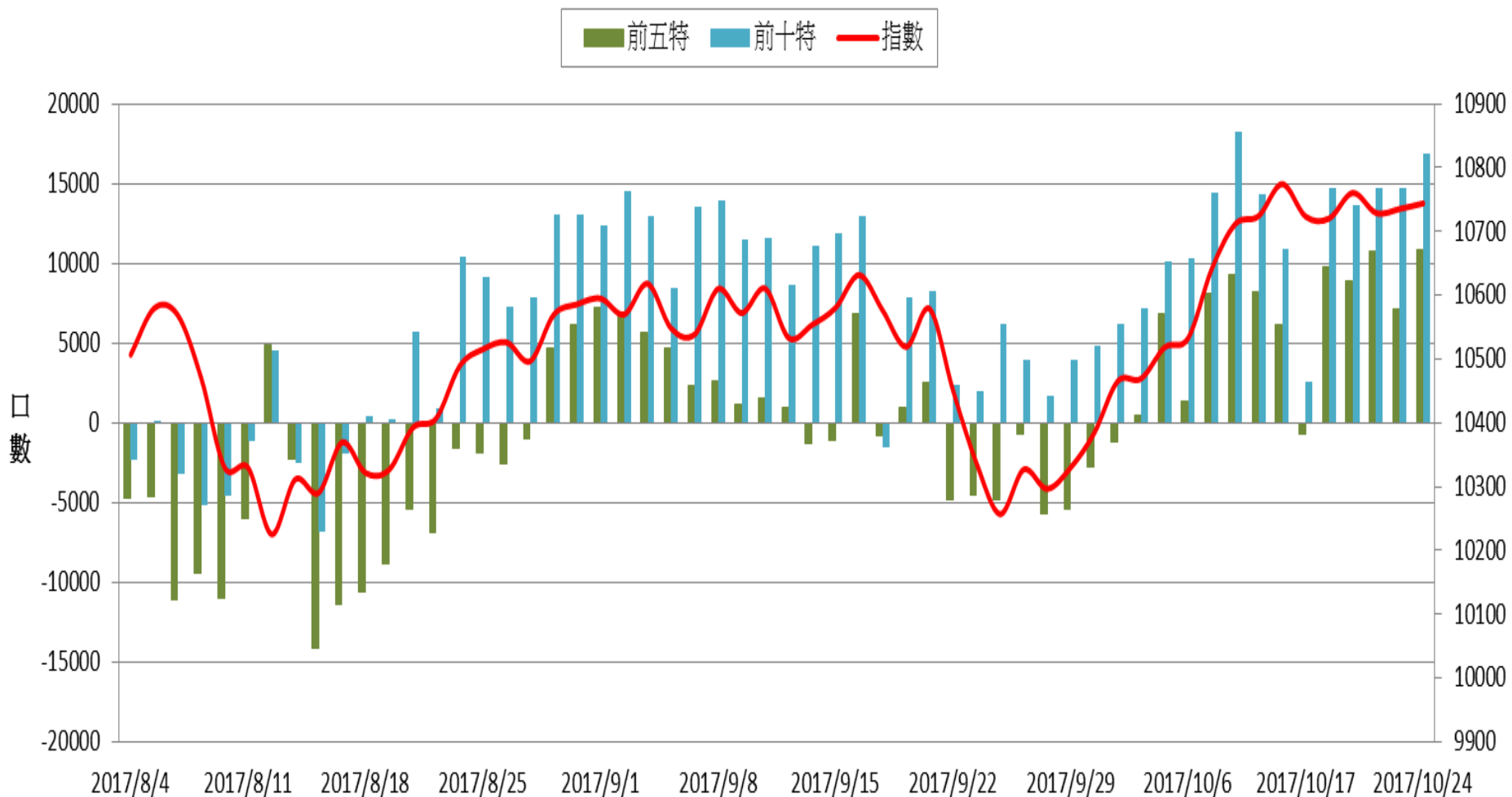
選擇權三大法人未平倉口數V.S 加權指數



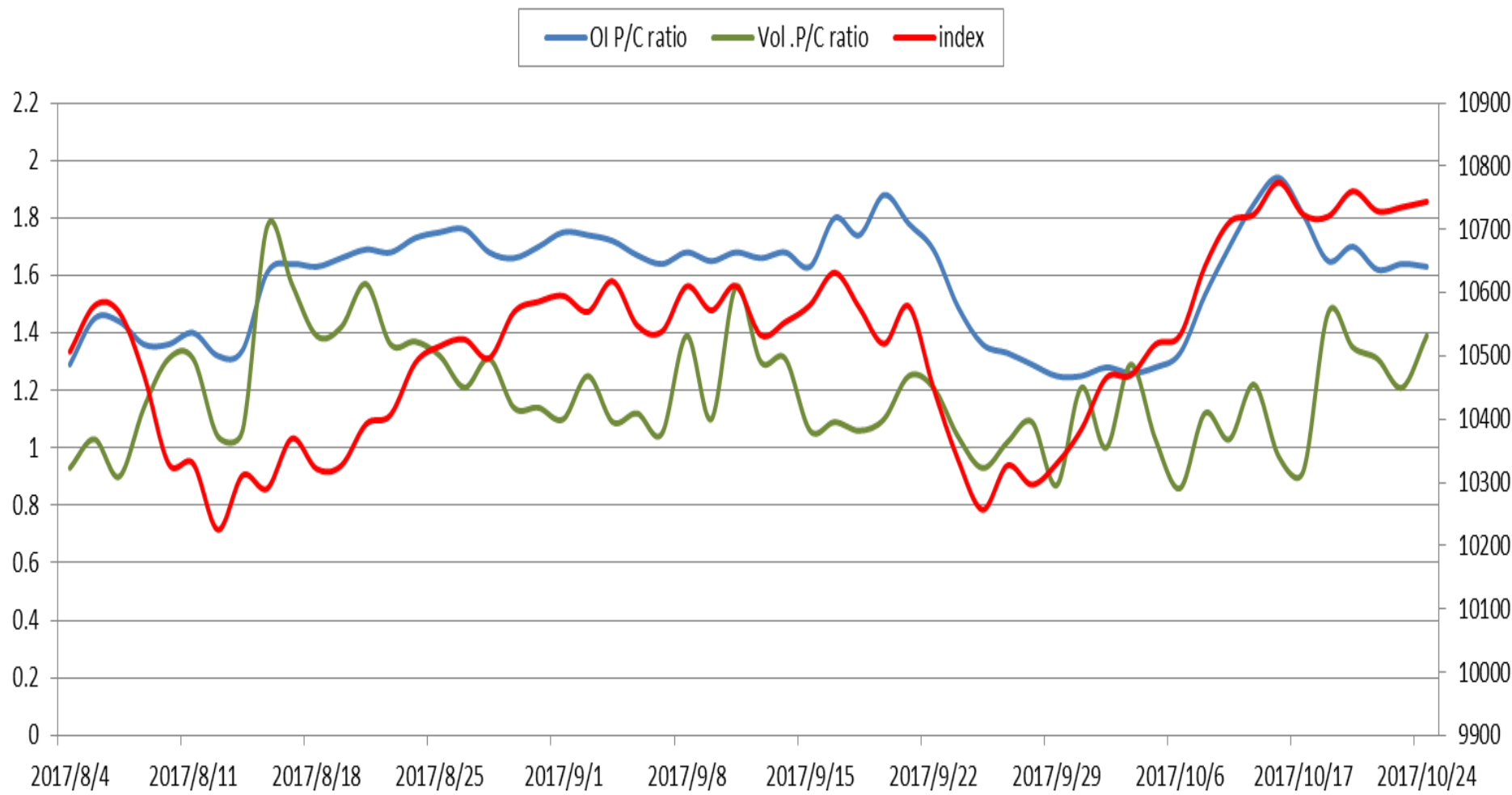
加權指數V.S期貨大額法人未平倉口數



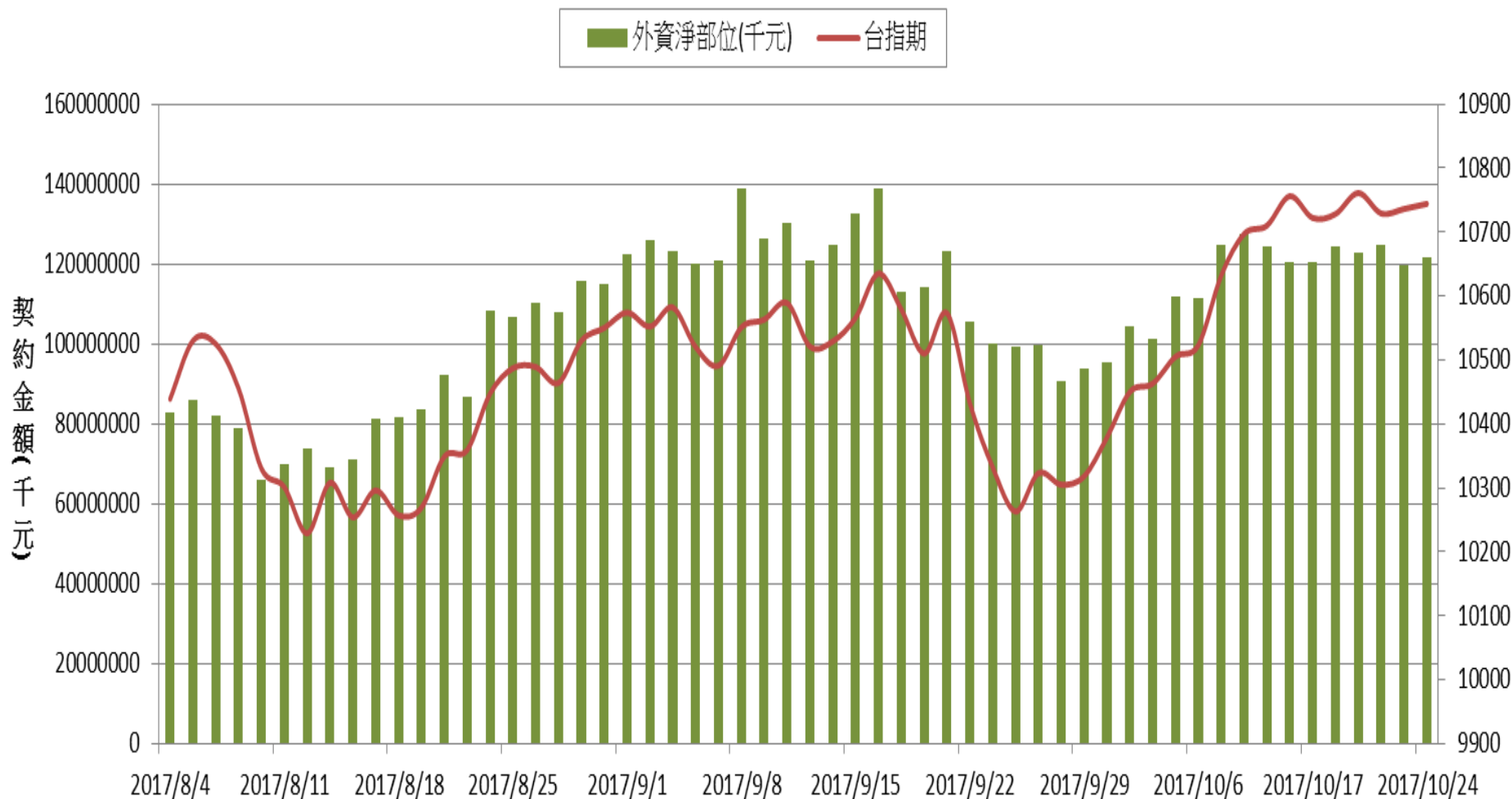
加權指數V.S期貨特定法人未平倉口數



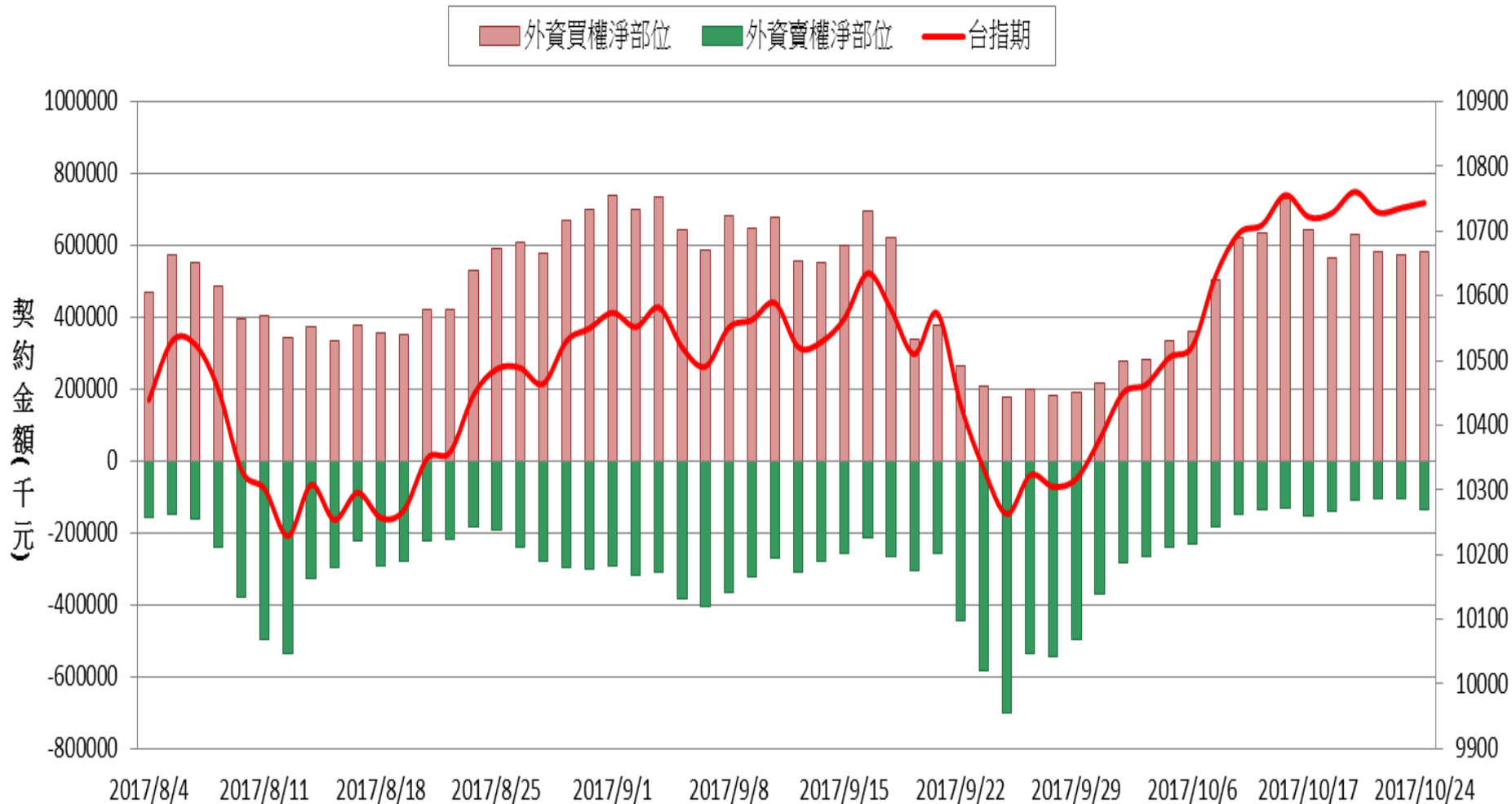
加權指數 vs 未平倉量P/Cratio vs 成交量P/C ratio



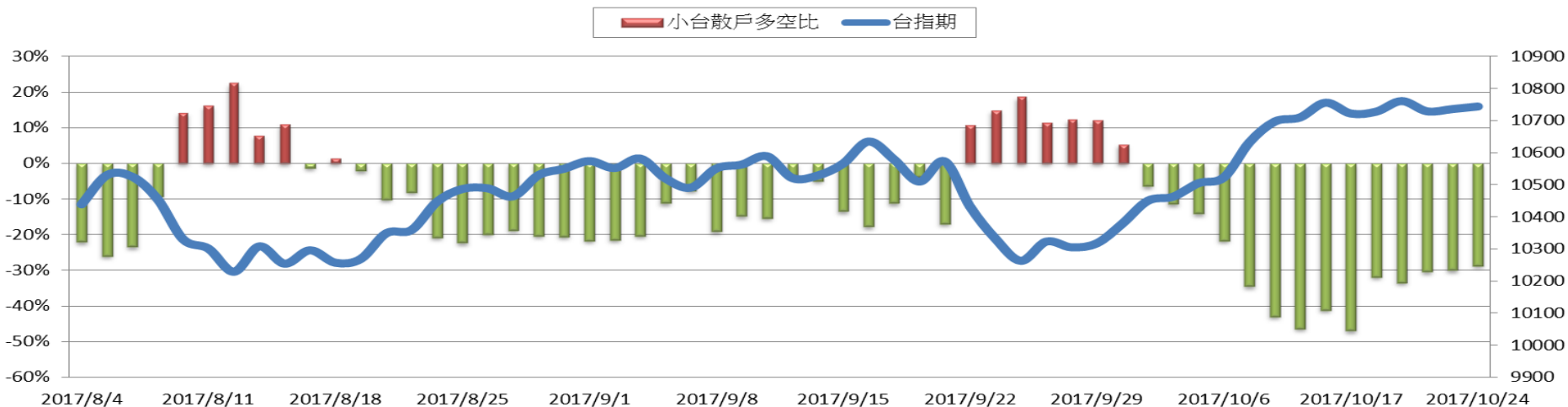
外資台指期與選擇權淨部位契約金額V.S台指期



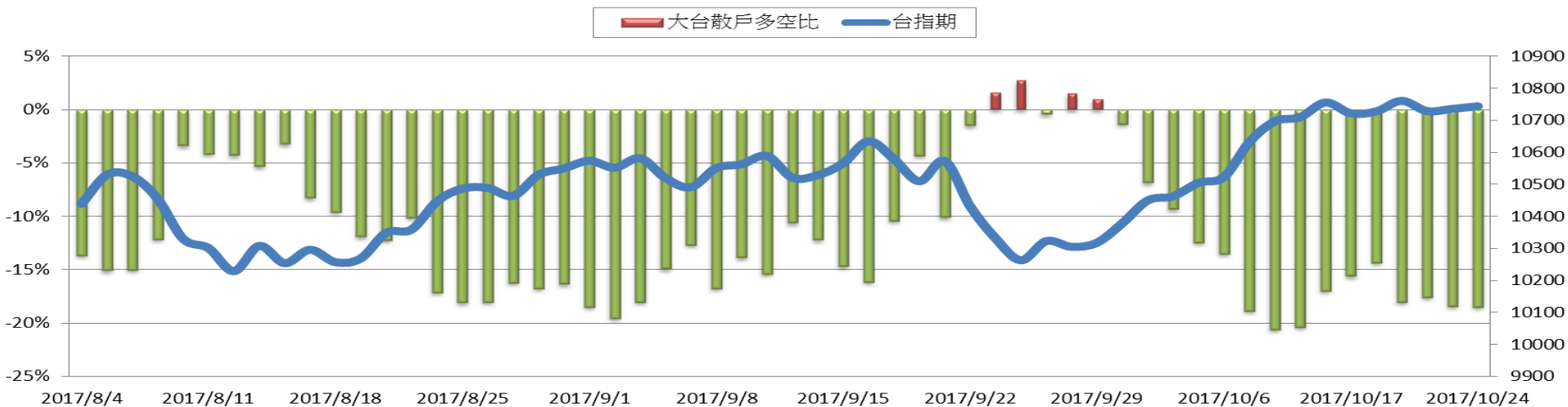
外資買賣權淨部位契約金額V.S台指期



台指期與小台散戶多空比(%)



台指期與大台散戶多空比(%)



| 買 權 | | | 201711 | 賣 權 | | |
|-------|---------|-------|--------|-----|---------------|------|
| Vol | OI變化 | OI | 履約價 | OI | OI變化 | Vol |
| 0 | 0 | 5 | 8700 | | 5145 (-3) | 31 |
| 0 | 0 | 6 | 8800 | | 2508 (-110) | 275 |
| 0 | 0 | 6 | 8900 | | 4376 0 | 105 |
| 0 | 0 | 6 | 9000 | | 3963 (+103) | 103 |
| 0 | 0 | 5 | 9100 | | 2200 (+280) | 280 |
| 0 | 0 | 3 | 9200 | | 7662 (+24) | 182 |
| 0 | 0 | 6 | 9300 | | 7479 (+53) | 193 |
| 0 | 0 | 6 | 9400 | | 13724 (-40) | 423 |
| 0 | 0 | 4 | 9500 | | 8129 (+169) | 281 |
| 0 | 0 | 9 | 9600 | | 8769 (+48) | 659 |
| 0 | 0 | 5 | 9700 | | 8891 (+680) | 1026 |
| 0 | 0 | 27 | 9800 | | 10152 (+1298) | 2576 |
| 0 | 0 | 132 | 9900 | | 12598 (+547) | 2665 |
| 0 | 0 | 143 | 10000 | | 17369 (+845) | 2561 |
| 2 | 0 | 298 | 10100 | | 14287 (+306) | 1355 |
| 14 | (-5) | 617 | 10200 | | 20268 (+690) | 2841 |
| 35 | (+4) | 993 | 10300 | | 21040 (+754) | 4671 |
| 267 | (+39) | 2214 | 10400 | | 25366 (+793) | 6629 |
| 449 | (+21) | 3956 | 10500 | | 35366 (+2257) | 9083 |
| 996 | (+120) | 8030 | 10600 | | 19556 (+1279) | 7808 |
| 4582 | (+307) | 14644 | 10700 | | 16569 (+1657) | 7967 |
| 10909 | (+1795) | 23966 | 10800 | | 6322 (+1255) | 4840 |
| 8065 | (+2055) | 30553 | 10900 | | 1559 (+232) | 817 |
| 7887 | (+1693) | 32870 | 11000 | | 567 (+56) | 322 |
| 5303 | (+999) | 23665 | 11100 | | 103 (+3) | 14 |
| 1098 | (+242) | 10994 | 11200 | | 56 (+5) | 10 |
| 1700 | (+1278) | 9467 | 11300 | | 20 0 | 0 |
| 124 | (+81) | 2484 | 11400 | | 46 0 | 0 |
| 11 | (+11) | 1050 | 11500 | | 3 0 | 0 |
| 1 | (+1) | 913 | 11600 | | 0 0 | 0 |
| 0 | 0 | 106 | 11700 | | 2 0 | 0 |
| 0 | 0 | 93 | 11800 | | 1 0 | 0 |
| 0 | 0 | 382 | 11900 | | 0 0 | 0 |
| 60 | 0 | 161 | 12000 | | 0 0 | 0 |
| 0 | 0 | 75 | 12100 | | 0 0 | 0 |
| 0 | 0 | 50 | 12200 | | 0 0 | 0 |
| 0 | 0 | 9 | 12300 | | 0 0 | 0 |
| 0 | 0 | 0 | 12400 | | 0 0 | 0 |